

Paper weight-110# (minimum)

Black nonfading ink required

U.S. PUBLIC LAND SURVEY MONUMENT RECORD

For Public Land Survey Corners In:

T. 2 N. R. 11 E. 4th P.M.

WI ADMINISTRATIVE CODE A-E 7.08 REQUIREMENT

REV 10/23/2004

USMONREC.DWG

CORNER CODE INDEX

PLYMOUTH TWP

TWP

ROCK COUNTY WI

IF AVAILABLE

ROCK COUNTY COORDINATES PREFERRED

A	1	2	3	4	5	6	7	8	9	10	11	12	13	14	15	16	17	18	19	20	21	22	23	24	25
B																									
C																									
D																									
E																									
F																									
G																									
H																									
J																									
K																									
L																									
M																									
N																									
O																									
P																									
Q																									
R																									
S																									
T																									
U																									
V																									
W																									
X																									
Y																									
Z																									

North _____ Elev. _____

East _____

Hor. Datum _____ Vert. Datum _____

LATITUDE _____ ELLIPS. HT. _____

LONGITUDE _____

NAD83(91) _____ NETWORK ADJ. YR _____

GPS (X) _____ TRAVERSE (X) _____

BASED ON THE FOLLOWING CONTROL:

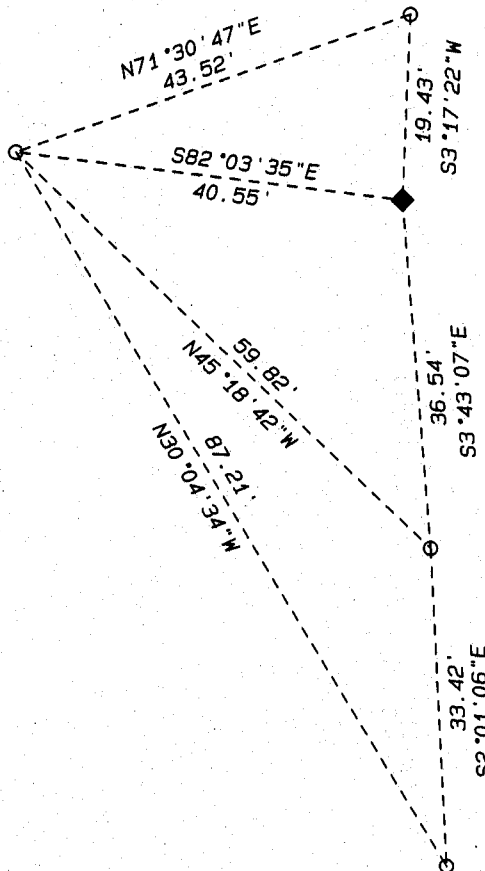
PLACE MONUMENT SYMBOL \blacklozenge AT PROPER LOCATION ON ABOVE INDEX

\blacklozenge CORNER MONUMENT

\circ WITNESS MONUMENT - Set $3/4" \times 24"$ round iron rebar

(a) BEARINGS ARE BASED ON: Assumed Datum
Assumed $N0^{\circ}36'07"W$ along the North-South Centerline of Section 27-2-11.

Found Hardhead wrapped in ribbon



FIELD BOOK _____ PAGE # _____

SHEET 1 OF 2

SHOW A PLAN VIEW DRAWING DEPICTING THE CORNER MONUMENT AND SURROUNDING PHYSICAL FEATURES, INCLUDING THE EXCAVATION AREA AND DEPTH.

PLANNING & ZONING COMMITTEE ADOPTED THIS FORM ON 12/2/1982

CORNER CODE T-15

(B) Describe any record evidence, monument evidence, occupational evidence, testimonial evidence or any other material evidence you considered, and whether the monument was found or placed.

Found Stone of Record. It was wrapped in ribbon. It was previously recovered on Combs Survey No. 84-251.

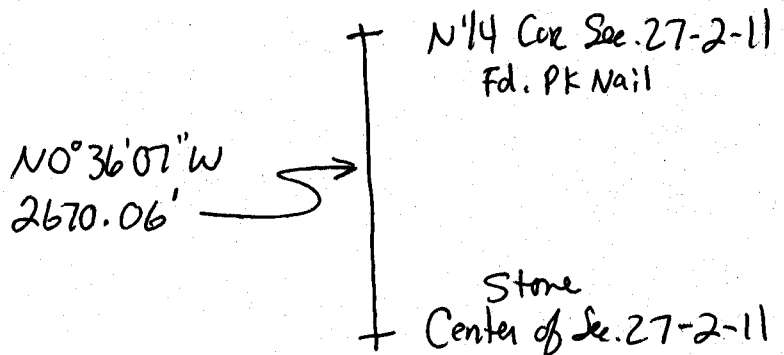
(C) Was the corner restored through acceptance of (1) an obliterated evidence location, or, (2) a found perpetuated location?

Found perpetuated Location

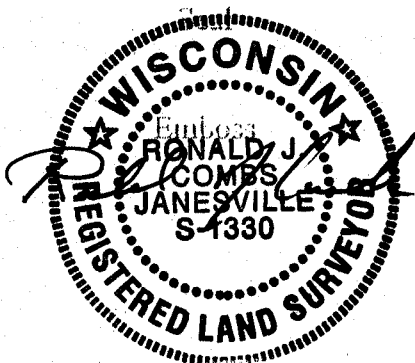
(D) Describe any material discrepancy between the location of the corner as restored or reestablished and the location of that corner as previously restored or reestablished by distance and direction. Show the discrepancy on the plan view drawing under (a), above. Show the distances between the corner as previously restored or reestablished and (1) the corner as restored or reestablished, and (2) to at least 4 of the witness monuments shown on the drawing in (a), above.

Set 4 witness monuments. See MAP

(E) Was the corner reestablished through lost corner proportionate methods? If so, show the method, including the directions and distances to other public land survey corners used as evidence or used for proportioning the corner location.



I, Ronald J. Combs hereby certify that the corner location as identified by the corner code index was determined by me under my direction and control and that this U.S. Public Land Survey Monument Record is correct and complete to the best of my knowledge and belief.



May 10th, 2011

SHEET 2 OF 2

CORNER CODE

A.E. 7.08 REQUIREMENT

T-15