

U.S. PUBLIC LAND SURVEY MONUMENT RECORD

For Public Land Survey Corners in:

WI ADMINISTRATIVE CODE A-E 7.08 REQUIREMENT

T. 2 N., R. 11 E

CORNER CODE INDEX

A	1	2	3	4	5	6	7	8	9	10	11	12	13	14	15	16	17	18	19	20	21	22	23	24	25
B																									
C	6																								
D																									
E																									
F	1	8																							
G																									
H																									
I																									
J																									
K	18	17																							
L																									
M																									
N																									
O																									
P	19	20																							
Q																									
R																									
S																									
T	30	29																							
U																									
V																									
W																									
X	31	32																							
Y																									
Z																									

PLYMOUTH TWP

ROCK COUNTY WI

IF AVAILABLE
ROCK COUNTY COORDINATES PREFERRED

North _____ Elev. _____

East _____

Hor. Datum _____ Vert. Datum _____

LATITUDE _____ ELLIPS. HT. _____

LONGITUDE _____

GPS (X) _____ TRAVERSE (X) _____

BASED ON THE FOLLOWING CONTROL:

PLACE MONUMENT SYMBOL AT PROPER LOCATION ON ABOVE INDEX

CORNER MONUMENT

WITNESS MONUMENT

(a)

BEARINGS ARE BASED ON:

FIELD BOOK _____ PAGE # _____

SHEET 1 OF 3

SHOW A PLAN VIEW DRAWING DEPICTING THE CORNER MONUMENT AND SURROUNDING PHYSICAL FEATURES, INCLUDING THE EXCAVATION AREA AND DEPTH.

PLANNING & ZONING COMMITTEE ADOPTED THE ABOVE FORM ON 12/2/1982

CORNER CODE R-15

PL588

(B) Describe any record evidence, monument evidence, occupational evidence, testimonial evidence or any other material evidence you considered, and whether the monument was found or placed.

- 1833 HARRISON EAST ON RAND. BET 22 & 27
1650 LEFT PRAIRIE & ENTER TIMBER
2640 TEMPY 1/4 P
5247 INT. E BDY AT P. LAND 1ST 1/4 1ST RATE ROLLING PRAIRIE RUN OF ? ROLLING 2ND RATE WITH BURR RED HASH & W.O. ? HAZEL W.O BUSHES GRASS & WEEDS
COR WEST
382.14 W.O. 24
2623.5 QUARTER SEC COR {BLK O 24 S84E 337.26 BLK O 16 S26W 275.22' BLK O 24 BLK O 16} MARKED SEC COR
5247
1868 LOCKE PG 1 COMMENCED AT COR FOR SECS 21, 22, 27 & 28 FOUND COR AS SET BY CHURCH SEE COUNTY SURVEYOR RECORD SEC 28 & UNDERNEATH REMAINS OF STAKE. COR IN CENTER OF HIGHWAY & IN LINE WITH FENCE RUNNING SOUTH. EAST BETWEEN SECS 22 & 27 VAR 6-15
EAST BETWEEN SECS 22 & 27 VAR 6-15
2644.95 INTERSECTED 1/4 LINE AT 1/4 COR. FOUND WEST BT AND STUMP OF EAST BT AND OLD STAKE. COR IN CENTER OF HIGHWAY AND IN LINE WITH NORTH AND SOUTH FENCES.
CONTINUED EAST FROM 1/4 COR VAR 6
5279.01 INTERSECTED EAST BOUNDARY 9.9' NORTH OF COR FOUND BTS IN SECS 23 & 27 & STUMPS OF BTS IN 22 & 26 DIST. TO BT IN 27 IS 163.35' DIST. TO STUMP OF BT IN 26 IS 217.8' COR IN CENTER OF HIGHWAY VAR CORRECTED 5-47 AUG 17, 1868
1876 RUGER VOL 2 PG 206 STONE MON. VAR 4-46 2628.78 TO NE COR SEC 27, VAR 5-20 2640 TO NW COR SEC 27, VAR 5-44 2664.09 TO CENTER SEC 27, & VAR 5-44 5323.23 TO S 1/4 COR SEC 27
1966 BATTERMAN VOL 4 PG 261 DUG & FD NOTHING RESET & REF. BY H. COMBS
1974 COMBS CSM VOL 4 PG 150 STATES NOTHING ABOUT MON. 2646.52 TO NW COR SEC 27
1978 BARNES VOL 5 PG 502 FD 1X6 IP & REF. PIPE. SET ALUM. MON.
1979 BARNES VOL 6 PG 11 FD ALUM. S87-37-46E 2635.14 TO NE COR SEC 27 & THE FOLLOWING ANGLES AT THE NE COR SEC 27: (VOID ANGLES-VOL 6 PG 280)
ANGLE FS BS
88-01-42 N1/4 COR SEC 27 E 1/16 COR SE 1/4 SEC 22
92-31-47 E 1/4 COR SEC 27 N 1/4 COR SEC 27
179-18-12 N 1/4 COR SEC 27 N 1/4 COR SEC 26
1979 BARNES VOL 6 PG 280 THE FOLLOWING ANGLES AT THE NE COR SEC 27:
ANGLE FS BS
87-45-13 N1/4 COR SEC 27 E 1/16 COR SE 1/4 SEC 22
92-22-34 E 1/4 COR SEC 27 N 1/4 COR SEC 27
179-18-15 N 1/4 COR SEC 27 N 1/4 COR SEC 26
VOID BEARINGS ON PAGE 11 VOL 6. THESE ARE THE CORRECT BEARINGS. ASSUMED NORTH.
1993 OFS CSM VOL 17 PG 58 STATES NOTHING ABOUT MON.

FD ALUM. MON. DUG & FD CUT LIMESTONE IN PERFECT CONDITION. THE CUT L.S. IS 4.5' BELOW PVMT SURFACE. ALUM. MONUMENT WAS DESTROYED IN THE EXCAVATION PROCESS. EVIDENCE IN EXCAVATION INDICATED THE CORNER WAS NOT DUG FOR BY A BACKHOE OR ANYTHING SUBSTANTIAL IN SIZE.

Donald Barnes

April 30 2003

SHEET 1 OF 3 CORNER CODE R-15

PL588

C) Was the corner restored through acceptance of (1) an obliterated evidence location, or, (2) a found perpetuated location?

ACCEPTED FOUND CUT LIMESTONE.

D) Describe any material discrepancy between the location of the corner as restored or reestablished and the location of that corner as previously restored or reestablished by distance and direction. Show the discrepancy on the plan view drawing under (a), above. Show the distances between the corner as previously restored or reestablished and (1) the corner as restored or reestablished, and (2) to at least 4 of the witness monuments shown on the drawing in (a), above.

THE DISCREPANCY IS SHOWN IN THE DRAWING.

(E) Was the corner reestablished through lost corner proportionate methods? If so, show the method, including the directions and distances to other public land survey corners used as evidence or used for proportioning the corner location.

NO

I, **Donald Barnes**, hereby certify that the corner location as identified by the corner code index was determined by me under my direction and control and that this U.S. Public Land Survey Monument Record is correct and complete to the best of my knowledge and belief.

Seal

Donald Barnes

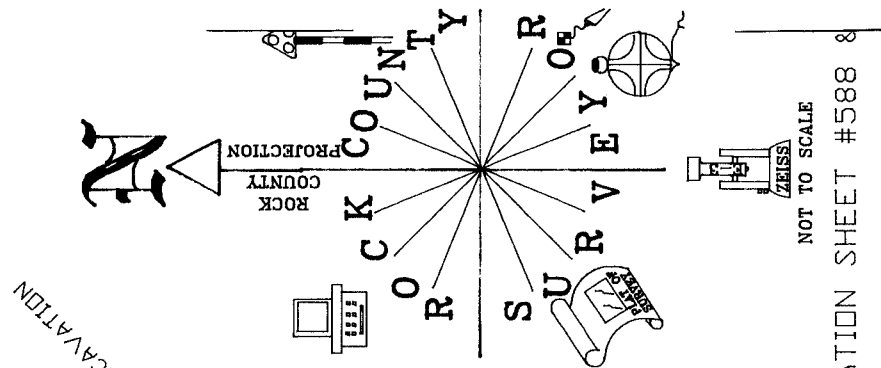
Emboss

April 30, 2003

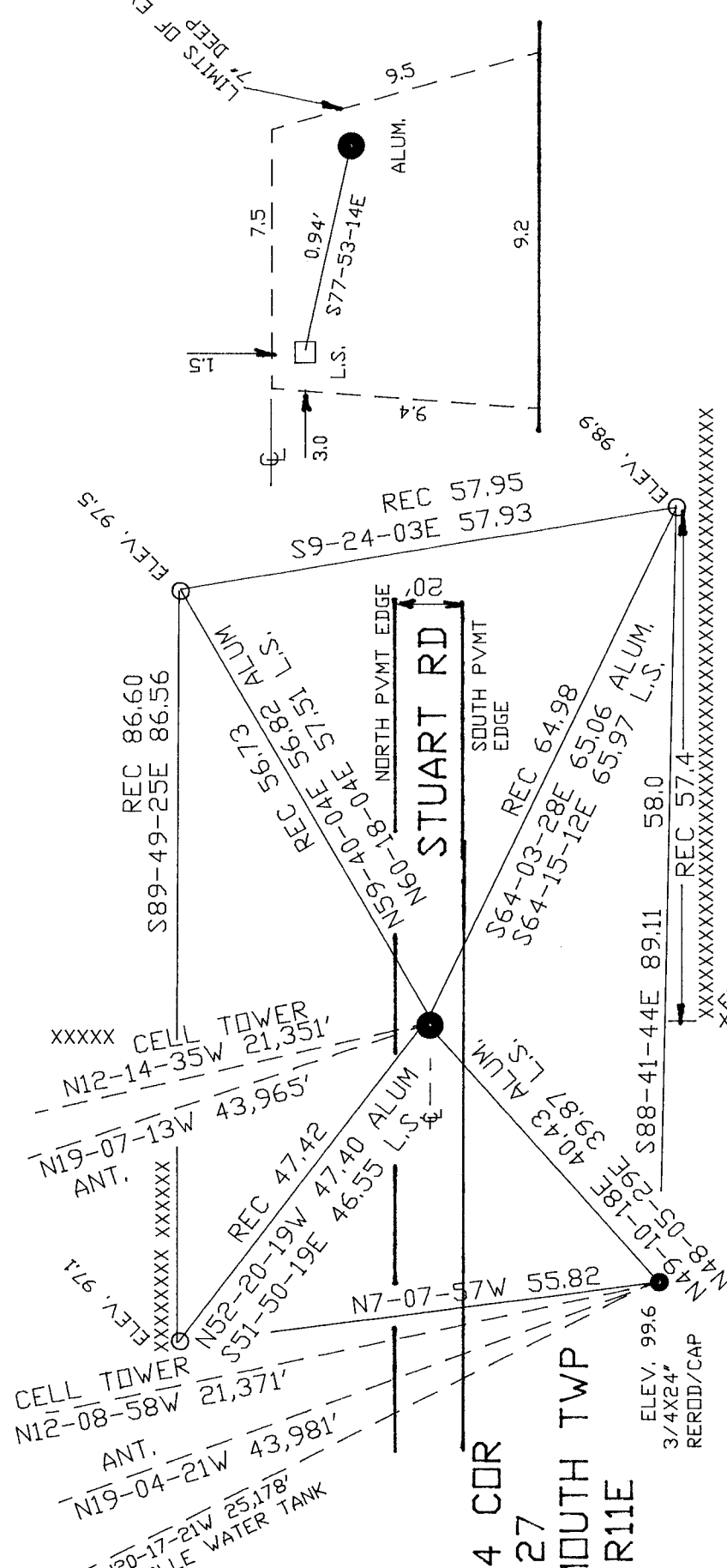
SHEET 2 OF 3

CORNER CODE **R-15**

A-E 7.08 REQUIREMENT



LIMITS OF EXCAVATION
7' DEEP



NOT TO SCALE

OBSERVATION SHEET #588 &

FD CUT L.S. 4.5' BELOW PVMT SURFACE.
PLACED 2 MAGNETS ON EAST AND 2 ON
SOUTH SIDE OF CUT L.S.
L.S. IS IN PERFECT CONDITION.
ELEV. OF CUT L.S. IS 95.6'

XXXXXX CELL TOWER
N12-14-35W 21,351'

XXXXXX ANT.
N19-07-13W 43,965'

XXXXXX
N52-20-19W 47.40'
S51-50-19E 46.55' L.S.

CELL TOWER
N12-08-58W 21,371'

ANT.
N19-04-21W 43,981'

N20-17-21W 25,178'
FOOTVILLE WATER TANK

N 1/4 COR
SEC 27
PLYMOUTH TWP
T2N R11E

ELEV. 99.6
3/4X24"
REROD/CAP

XXXXXX
ELEV. 98.6
XXXXXXXXXX

O FD 1" PIPE

● FD ALUM. MON. 0.3' BELOW
RD SURFACE, ALUM. DESTROYED

ASSUMED ELEV. 100.00
@ ALUM. MON.

EMBOSSED
SEAL

MAP 3 OF 3

Ronald Barnes
Apr 29, 2003

R-15