

U.S. PUBLIC LAND SURVEY MONUMENT RECORD

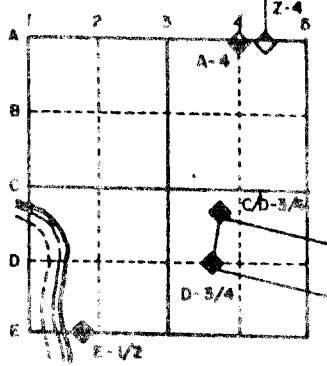
For Public Land Survey Corners in the
T. 2 N., R. 11 E.

CORNER CODE INDEX

	1	2	3	4	5	6	7	8	9	10	11	12	13	14	15	16	17	18	19	20	21	22	23	24	25
A																									
B																									
C		6																							
D			5																						
E				4																					
F					3																				
G						2																			
H																									
I																									
J																									
K																									
L																									
M																									
N																									
O																									
P																									
Q																									
R																									
S																									
T																									
U																									
V																									
W																									
X																									
Y																									
Z																									

PLACE MONUMENT SYMBOL (◆) AT PROPER LOCATION ON ABOVE INDEX

EXAMPLE



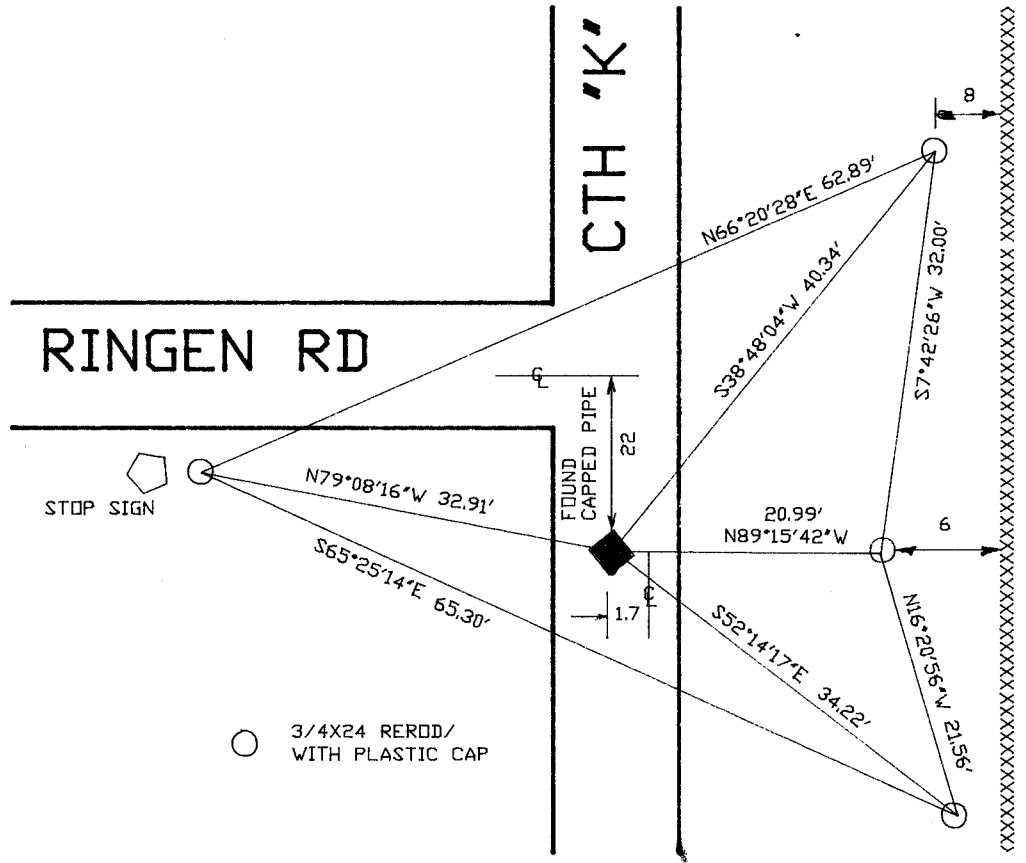
PLYMOUTH TWP
ROCK COUNTY WI

IF AVAILABLE
STATE PLANE COORDINATES

North (Y) _____ Eleve. (Z) _____
 East (X) _____ Zone _____
 Hor. Datum _____ Vert. Datum _____

- (a) ◆ CORNER MONUMENT ○ WITNESS MONUMENT

BEARINGS ARE BASED ON:



FIELD BOOK _____ PAGE # _____

SHOW A PLAN VIEW DRAWING DEPICTING THE CORNER MONUMENT AND SURROUNDING PHYSICAL FEATURES, INCLUDING THE EXCAVATION AREA AND DEPTH. THE CORNER MONUMENT SHALL HAVE THE FOLLOWING CHARACTERISTICS: 1) HAVE AT LEAST TWO PREDETERMINED BREAK-OFF POINTS. 2) IF BROKEN, LEAVE A PERMANENTLY MAGNETIZED REMNANT AT THE ORIGINAL POINT. 3) MUST BE EXTENDABLE. 4) THE CAP IS INSCRIBED: ROCK COUNTY SURVEY MONUMENT - PENALTY FOR DISTURBING MARKER. 5) OR AN EXISTING CUT LIMESTONE. AN IRON PIPE 1 1/2" x 4'0" (MINIMUM) MAY BE USED IN AREAS WHERE GROUND WATER IS WITHIN ONE FOOT OF THE SURFACE. IF THE CORNER IS OCCUPIED BY AN IMPROVEMENT (MANHOLE, BURIED CABLE, ETC.) ANY DURABLE, DISTINCT MONUMENT MAY BE USED. CORNERS SHALL BE REFERENCED WITH AT LEAST 4 DURABLE WITNESS MONUMENTS. WITNESS MONUMENTS SHALL BE MADE OF CONCRETE, NATURAL STONE, IRON OR OTHER EQUALLY DURABLE MATERIAL, EXCEPT WOOD. DESCRIBE THE CORNER AND THE WITNESS MONUMENTS.

CORNER CODE:

R 1

(B) Describe any record evidence, monument evidence, occupational evidence, testimonial evidence, other material evidence considered, and whether the monument was found or placed.

1833 ORIGINAL SURVEYOR. SET POST CORNER SECTIONS 24 & 25 IN PRAIRIE. MADE A MOUND OF EARTH & SOD LAND ROLLING. SECOND RATE B W & BUR OAK. LAST HALF DRY PRAIRIE RED ROOT ROSE WILLOW GRASS. CALLS FOR 2640 TO EAST QUARTER CORNER OF SECTION 24 AND 2640 TO EAST QUARTER CORNER OF SECTION 25.

1833 HARRISON INTERSECTED WEST BOUNDARY AT POST. POST CORNER TO SECTIONS 19 & 30. CALLS FOR 2636.7 TO SOUTH QUARTER CORNER OF SECTION 19.

1854 McVEAN VOL 1 PG 22 CALLS FOR 2622.18 TO THE WEST QUARTER CORNER OF SECTION 19 AND 2647.92 TO THE SOUTH QUARTER CORNER OF SECTION 19. STATES NOTHING ABOUT THE CORNER.

1868 LOCKE INTERSECTED NORTH BOUNDARY 4.95' EAST. FOUND WHERE OLD STAKE WAS PULLED OUT AND STRONGLY MARKED INDICATIONS OF PIT 4' SOUTH EAST. CORNER IN CENTER OF HIGHWAY AND IN LINE WITH FENCE RUNNING WEST AND NEARLY IN LINE WITH FENCE RUNNING EAST. VAR CORRECTED 7-17. CALLS FOR 2634.39 TO THE WEST QUARTER CORNER OF SECTION 30; 2632.08 VAR 7-09 TO THE WEST QUARTER CORNER OF SECTION 19; AND 2661.12 VAR 6-27 TO THE SOUTH QUARTER CORNER OF SECTION 19.

1937 SUNNY VOL 3 PG 356 FOUND CUT LIMESTONE 10" LOW. SET 1 1/2 PIPE WITH CAP ON TOP FLUSH WITH BLACKTOP.

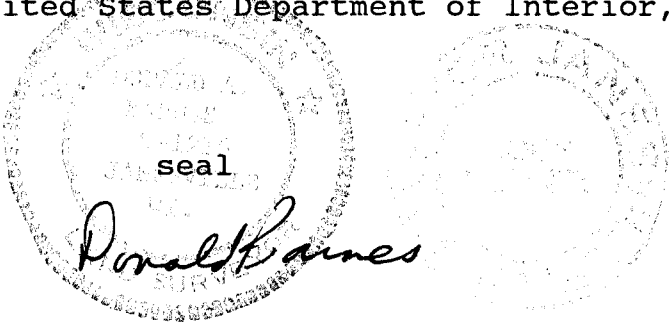
FOUND CAPPED PIPE. 1.7 WEST OF CENTER OF PAVEMENT.

C) Was the corner restored through acceptance of (1) an obliterated evidence location, or, (2) a found perpetuated location?
ACCEPTED FOUND LOCATION.

D) Describe any material discrepancy between the location of the corner as restored or reestablished and the location of that corner as previously restored or reestablished by distance and direction. Show the discrepancy on the plan view drawing under (a), above. Show the distances between the corner as previously restored or reestablished and (1) the corner as restored or reestablished, and (2) to at least 4 of the witness monuments shown on the drawing in (a), above.

(E) Was the corner reestablished through lost corner proportionate methods? If so, show the method, including the directions and distances to other public land survey corners used as evidence or used for proportioning the corner location.

I, Donald Barnes, hereby certify that the corner points as identified by the corner code index were, in a field survey on, JULY 15 1992, established, re-established, monumented, re-monumented, recovered or restored as expressed below and in conformance with the regulations and rules as required in the current manual of survey instructions of the United States Department of Interior, Bureau of Land Management.



COUNTY SURVEYOR FILING DATA

Date of computer entry _____

Date microfilmed _____

Number of included sheets _____
CORNER CODE

AFFIX YOUR LAND SURVEYOR SEAL