

U.S. PUBLIC LAND SURVEY MONUMENT RECORD

For Public Land Survey Corners in:

WI ADMINISTRATIVE CODE A-E 7.08 REQUIREMENT

T. 2 N., R. 11 E

CORNER CODE INDEX

A	1	2	3	4	5	6	7	8	9	10	11	12	13	14	15	16	17	18	19	20	21	22	23	24	25
B																									
C	6						5																		
D																									
E																									
F																									
G	1						8																		
H																									
J																									
K																									
L	18						11																		
M																									
N																									
O																									
P	19						20																		
R																									
S																									
T	30						29																		
U																									
V																									
W																									
X	31						32																		
Y																									
Z																									

PLYMOUTH TWP

ROCK COUNTY WI

IF AVAILABLE
ROCK COUNTY COORDINATES PREFERRED

North _____ Elev. _____

East _____

Hor. Datum _____ Vert. Datum _____

LATITUDE _____ ELLIPS. HT. _____

LONGITUDE _____

GPS (X) _____ TRAVERSE (X) _____

BASED ON THE FOLLOWING CONTROL:

PLACE MONUMENT SYMBOL AT PROPER LOCATION ON ABOVE INDEX

CORNER MONUMENT

WITNESS MONUMENT

(a)

BEARINGS ARE BASED ON:

FIELD BOOK _____ PAGE # _____

SHEET 1 OF 3

SHOW A PLAN VIEW DRAWING DEPICTING THE CORNER MONUMENT AND SURROUNDING PHYSICAL FEATURES, INCLUDING THE EXCAVATION AREA AND DEPTH.

PLANNING & ZONING COMMITTEE ADOPTED THE ABOVE FORM ON 12/2/1982

CORNER CODE P-1

PL574

(B) Describe any record evidence, monument evidence, occupational evidence, testimonial evidence or any other material evidence you considered, and whether the monument was found or placed.

- 1833 MULLETT NORTH ON EAST SIDE SECTION 24 T2N R10E
2640 SET QUARTER SECTION POST MADE MOUND OF EARTH
& SOD & C(?)
5280 SET POST CORNER SECTIONS 13 & 24 IN PRAIRIE &
MADE MOUND & C(?) LAND ROLLING SECOND RATE
DRY PRAIRIE
- 1854 McVEAN VOL 1 PG 22 STATES NOTHING ABOUT COR.
2626.14 TO SW COR SEC 19, 2656.17 VAR 7 1/2 TO CENTER
SEC 19, & 5306.40 TO E 1/4 COR SEC 19.
- 1854 TWP RD REC BK 1 PG 36 "" A HWY BE LAID OUT IN SAID
TOWN OF THE WIDTH OF 66'. THE CENTER LINE OF THE SAID
HWY IS TO COMMENCE ON THE 1/4 LINE 1320' EAST OF THE 1/4
POST ON THE WEST SIDE OF SEC 19 AND TO RUN THENCE
EAST ON SAID 1/4 LINE THROUGH SAID SEC 19 AND TO RUN
THENCE EAST ON THE 1/4 LINE THROUGH SEC 20 AND TO RUN
THENCE EAST ON THE 1/4 LINE INTO SEC 21 UNTIL IT INTERSECT
A RD RUNNING TO BASS CREEK BRIDGE.
- 1866 LOCKE 1-269 FD STAKE & SANDSTONE ON COR. SET STAKE
SURROUNDED BY 3 SANDSTONES & 1 HH. 2649.9 TO CENTER
SEC 24 T2N R10E & 5299.8 TO W 1/4 COR SEC 24.
- 1866 LEE 2-3 FD MON. VAR 7 2630.76 TO SW COR SEC 19 &
VAR 40 2652.87 TO CENTER SEC 24 T2N R10E
- 1868 LOCKE PG 65 NORTH ON WEST LINE SEC 19 VAR 7-05
2632.08 INTERSECTED 1/4 LINE 3.3' EAST OF COR. FOUND
COR. AS SET BY SELF. (SEE CO SURVEYOR RECORD
SEC 24 SPRING VALLEY) IN CENTER OF HIGHWAY
AND IN LINE OF E&W FENCES. VAR. CORRECTED 7-
09
CONTINUED NORTH FROM 1/4 COR WITH VAR 7-05
5252.61 INTERSECTED NORTH BOUNDARY 13.86' EAST OF
COR. FOUND OLD STAKE IN COR OF RAIL FENCE
RUNNING N & S. VAR CORRECTED 7-23 SEPT
10, 1868
- 1884&55 RUGER 2-287 VAR 5 1/4 2633.90 TO SW COR SEC 19,
2648.18 TO GEN SEC 24 T2N R10E, & NORTHERLY VAR 5 1/4
986.92 TO R/R (? SET SANDSTONE 22 X 7 1/2 X 6.)
- 1905 KERCH VOL 3 PG 30 MON. 2668.7 TO CENTER OF SEC 19,
926.8 NORTHERLY TO FD STONE AT CENTER OF STH, & ANGLE
OF 90-26 FROM FD STONE IN STH TO CENTER OF SEC 19.
- 1937 SUNNY VOL 3 PG 356 FD 6X6 CUT STONE MON. 2" LOW
DID NOT SET PIPE ON TOP. 986.8 NORTHERLY TO CENTER
OF STH 13. REF SAME.
- 19?? SCHIMEAL MAP #13828 FD 6X6 STONE. CREATED SEVERAL
PARCELS STARTING AT 1/4 COR 7 CONTINUING NORTH. PIPE
231.0' EAST OF 1/4 COR.
- 1966 BATTERMAN VOL 4 PG 274 FD CUT L.S. & REFERENCED
SAME. FD & REFERENCED CENTER OF SEC 19
- 1979 BARNES VOL 5 PG 561 SHOWS LOCKE'S DIST. & RICK THOM
JR. 2622.05 TO NW COR SEC 19.
- 1979 SCHNEEBERGER MAP #4374 STATES NOTHING ABOUT MON.
- 1987 LEE MAP #12817 SYMBOL IS NOT IN LEGEND.
- 1991 SCHROEDER CSM VOL 15 PG 9 STATES NOTHING ABOUT
MON.
- 1992 BARNES VOL 6 PG 430 SHOWS RECORD DISTANCES TO SW
COR SEC 19.
- 1998 COMBS MAP #8115 STATES NOTHING ABOUT MON.

FD PK & REFERENCE PIPES.

12-30-02
Donald Barnes SHEET 1 OF 3 CORNER CODE P-1

PL574

C) Was the corner restored through acceptance of (1) an obliterated evidence location, or, (2) a found perpetuated location?

ACCEPTED BUT L.S. AS REFERENCED IN 1966 BY BATTERMAN.

D) Describe any material discrepancy between the location of the corner as restored or reestablished and the location of that corner as previously restored or reestablished by distance and direction. Show the discrepancy on the plan view drawing under (a), above. Show the distances between the corner as previously restored or reestablished and (1) the corner as restored or reestablished, and (2) to at least 4 of the witness monuments shown on the drawing in (a), above.

ALL RECORD TIES TO PIPES ARE IN HARMONY. FD PK DOES NOT AGREE EXACTLY WITH RECORD DISTANCES. COULD NOT FIND A SOURCE OF WHO PLACED THE PK.

(E) Was the corner reestablished through lost corner proportionate methods? If so, show the method, including the directions and distances to other public land survey corners used as evidence or used for proportioning the corner location.

I, Donald Barnes, hereby certify that the corner location as identified by the corner code index was determined by me under my direction and control and that this U.S. Public Land Survey Monument Record is correct and complete to the best of my knowledge and belief.

Seal

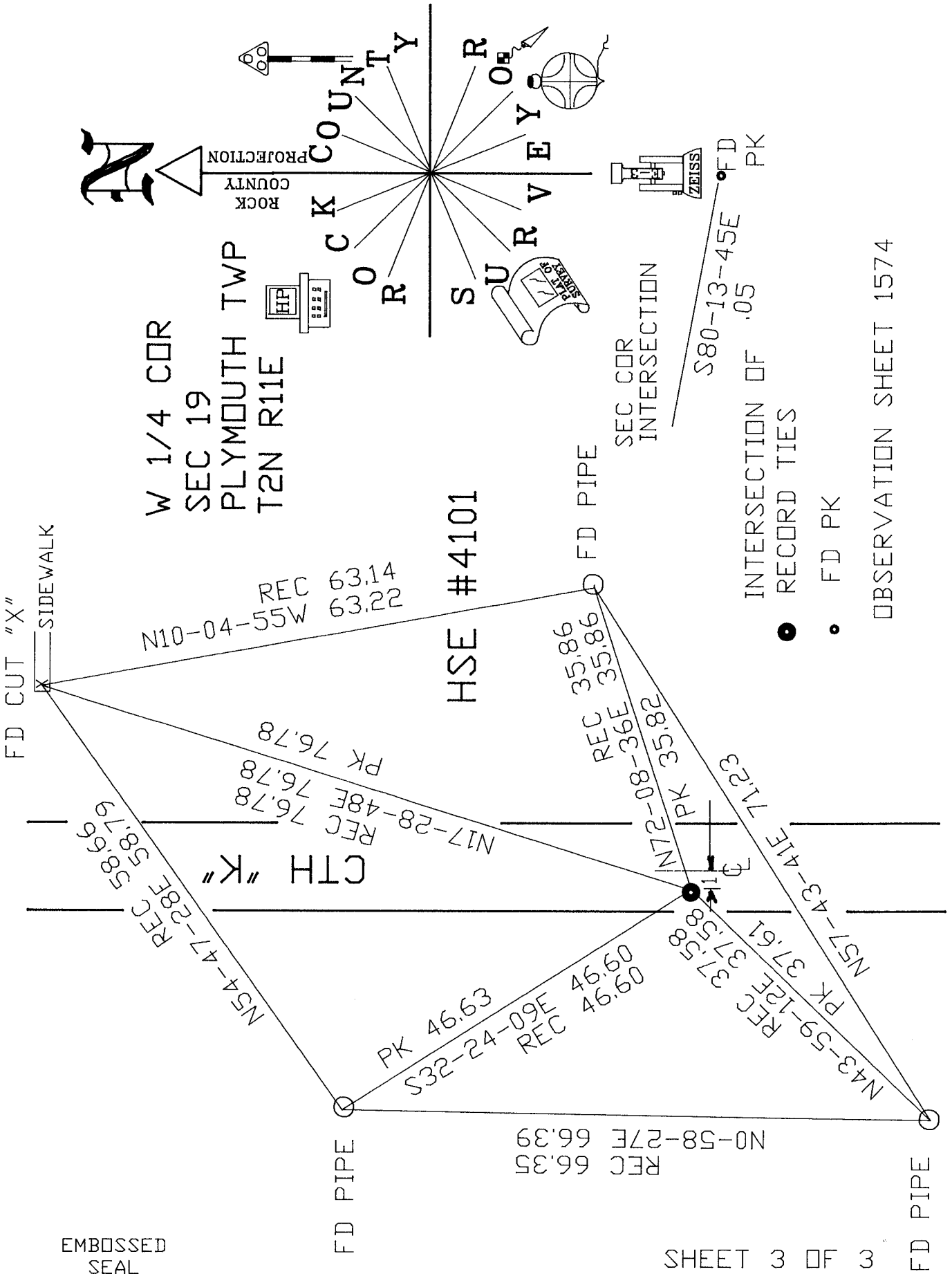
Donald Barnes

12-30-02
Emboss

SHEET 2 OF 3

CORNER CODE **P-1**

A-E 7.08 REQUIREMENT



EMBOSSED
 SEAL
Donald Barnes
 12/30/02

SHEET 3 OF 3

P-1