

# U.S. PUBLIC LAND SURVEY MONUMENT RECORD

For Public Land Survey Corners in:

WI ADMINISTRATIVE CODE A-E 7.08 REQUIREMENT

T. 2 N., R. 11 E

### CORNER CODE INDEX

A	1	2	3	4	5	6	7	8	9	10	11	12	13	14	15	16	17	18	19	20	21	22	23	24	25
B	6																								
C		5																							
D			A																						
E																									
F	1																								
G		8																							
H			9																						
I																									
J																									
K																									
L	18																								
M		11																							
N			16																						
O																									
P																									
Q	19																								
R		20																							
S			21																						
T																									
U	30																								
V		29																							
W			28																						
X																									
Y																									
Z																									

PLYMOUTH TWP  
ROCK COUNTY WI

IF AVAILABLE  
ROCK COUNTY COORDINATES PREFERRED

North \_\_\_\_\_ Elev. \_\_\_\_\_

East \_\_\_\_\_

Hor. Datum \_\_\_\_\_ Vert. Datum \_\_\_\_\_

LATITUDE \_\_\_\_\_ ELLIPS. HT. \_\_\_\_\_

LONGITUDE \_\_\_\_\_

GPS (X) \_\_\_\_\_ TRAVERSE (X) \_\_\_\_\_

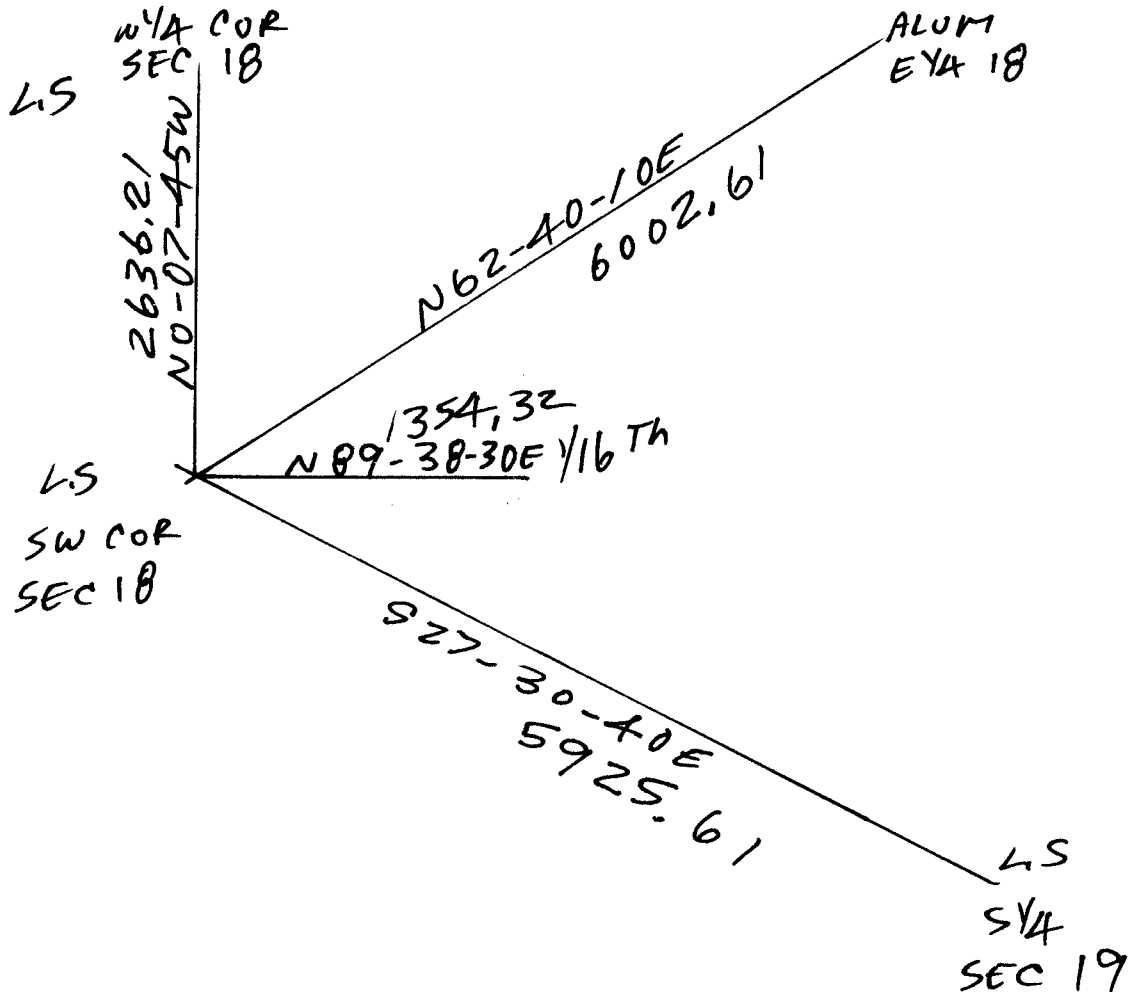
BASED ON THE FOLLOWING CONTROL:

PLACE MONUMENT SYMBOL  $\blacklozenge$  AT PROPER LOCATION ON ABOVE INDEX

$\blacklozenge$  CORNER MONUMENT       $\circ$  WITNESS MONUMENT

(a)

BEARINGS ARE BASED ON:



OBSERVATION SHEET 31

FIELD BOOK \_\_\_\_\_ PAGE # \_\_\_\_\_

SHEET 1 OF 2

SHOW A PLAN VIEW DRAWING DEPICTING THE CORNER MONUMENT AND SURROUNDING PHYSICAL FEATURES, INCLUDING THE EXCAVATION AREA AND DEPTH.

PLANNING & ZONING COMMITTEE ADOPTED THE ABOVE FORM ON 12/2/1982

CORNER CODE N-1

PL561

(B) Describe any record evidence, monument evidence, occupational evidence, testimonial evidence or any other material evidence you considered, and whether the monument was found or placed.

- 1833 MULLETT NORTH ON EAST SIDE SECTION 24 T2N R10E  
2640 SET QUARTER SECTION POST MADE MOUND OF EARTH & SOD & C(?)  
5280 SET POST CORNER SECTIONS 13 & 24 IN PRAIRIE & MADE MOUND & C(?) LAND ROLLING SECOND RATE DRY PRAIRIE  
NORTH ON EAST SIDE OF SECTION 13 (T2N R10E)  
1320 LEAVE PRAIRIE  
2640 SET QUARTER SECTION POST BLACK OAK 10 S43W 9.9', BLACK OAK 14 N79W 23.76'  
4752 ENTER MARSH  
5280 SET POST CORNER SECTION 12 & 13 BUR OAK 8 S20 1/2 W 111.54', BUR OAK 16 N6 1/2 W 528'. LAND ROLLING SECOND RATE, TIMBER WB & BUR OAK. PART MARSH GRASS, BUSHES.
- 1833 HARRISON WEST ON RAND. BETW SECS 18 & 19  
1320 LEFT MARSH & ENTER TIM  
2640 TEMPY 1/4 P  
4950 LEFT TIM & ENTER PRAIRIE  
5311.02 INT W. BDY 105.6' N OF P & AT POST ESTAB. COR TO SECS 18 & 19 BEARINGS { LAND HIGH & ROLLING 2<sup>ND</sup> RATE WITH TIMBER OF BLK O ?  
COR EAST  
2671.02 QUARTER SEC COR. {BLK O 14 S59E 75.9' BLK O 12 S23E 95.7' BLK O 14 BLK O 12 } MARKED  
5311.02 SEC COR
- 1833 HARRISON PLAT SW TO SE COR SEC 13 5283.96' T2N R10E  
1834 MILLER EAST RANDOM SEC 13 & 24 T2N R10E  
495 ENT. MARSH NW  
1056 LEAVE MARSH ENT. PRAIRIE  
5283.96 INTERSECTED RANGE LINE AT POST LAND LOW AND LEVEL 2<sup>ND</sup> RATE  
WEST MARKED BACK  
2641.98 SET POST IN MOUND OF EARTH AND SOD  
5283.96 SEC. CORNER MARCH 13 1834
- 1854 McVEAN VOL 1 PG 22 2662.44 TO N 1/4 COR SEC 19  
1857 CHURCH VOL 1 PG 67 VAR 9 2663.10 TO ??  
1868 LOCKE PG 65 NORTH ON WEST LINE SEC 19 VAR 7-05  
2632.08 INTERSECTED 1/4 LINE 3.3' EAST OF COR. FOUND COR. AS SET BY SELF. (SEE CO SURVYOR RECORD SEC 24 SPRING VALLEY) IN CENTER OF HIGHWAY AND IN LINE OF E & W FENCES. VAR. CORRECTED 7-09  
CONTINUED NORTH FROM 1/4 COR WITH VAR 7-05  
5252.61 INTERSECTED NORTH BOUNDARY 13.86' EAST OF COR. FOUND OLD STAKE IN COR OF RAIL FENCE RUNNING N & S. VAR CORRECTED 7-23 SEPT 10, 1868  
PG 66 EAST BETWEEN SECS 18 AND 19 VAR 4-50  
2673.99 INTERSECTED 1/4 LINE 95.04' SOUTH OF COR. FOUND STAKE & WHERE BTS WERE DUG OR ROTTED OUT. COR. IN LINE OF N & S FENCES AND 21.12' NORTH OF CENTER OF RR TRACK. VAR CORRECTED 6-54  
SET OFF 4.95' SOUTH & RAN EAST FROM 1/4 COR WITH VAR 7  
5336.1 INTERSECTED EAST BOUNDARY 52.14' SOUTH OF COR. COR LOST SET IT IN BY "PROPORTIONAL DISTANCE" FROM 1/4 COR 1/2 MILE EAST, SOUTH, WEST. & 1/4 COR 1 1/2 MILE NORTH THAT IS 2677.95' FROM 1/4 COR & 2670.36' FROM 1/4 COR & 2662.11' FROM 1/4 COR W AND 8011.08' FROM 1/4 COR N. COR N COR 25.41' NORTH OF E & W FENCE  
SHEET 1 OF 2 CORNER CODE N-1

Donald Barnes

3-08-03

PL561 AND 8.25' WEST OF N & S FENCE IN CREEK  
 SURROUNDED MONUMENT BY BOARD PILES &  
 MOUND. VAR CORRECTED 8-01 SEPT 10 1868  
 PG 81 NORTH ON WEST LINE SEC 18 VAR 7-25  
 0 SET OFF 16.5' EAST  
 2082.63 SET OFF 37.95' EAST  
 2310 SET OFF 1.32' EAST  
 2636.7 INTERSECTED 1/4 LINE 20.79' EAST OF COR. FOUND  
 STUMPS OF B.T.S AND OLD STAKE. COR. 4 FT  
 NORTH AND 4' EAST OF INTERSECTION OF FENCES.  
 VAR CORRECTED 6-40 SET OFF FROM 1/4 COR 20.79'  
 EAST AND CONTINUED NORTH WITH VAR 7  
 4026 SET OFF 0.99' WEST  
 5255.25 INTERSECTED NORTH BOUNDARY 32.01' EAST OF  
 COR. VAR CORRECTED 7-16 SEPT 16<sup>TH</sup> 1868  
 1914 KERCH VOL 3 PG 30 MON. 2676.4 TO N 1/4 COR SEC 19  
 1914 KERCH VOL 5 PG 578 & 579 ANGLE 88-45-45 @ SW COR SEC  
 18 FROM W 1/4 COR SEC 18 TO S 1/4 COR SEC 18, ANGLE 89-23-  
 45 @ SW COR SEC 18 FROM S 1/4 COR SEC 18 TO W 1/4 COR SEC  
 19, 2676.42 TO S 1/4 COR SEC 18, NORTHERLY 723.0 TO SQ  
 IRON SURROUNDED BY HH, & EASTERLY 24.75 TO SOLID IRON  
 PIN.  
 1914 KERCH MAP #4370 FD STONE. SET IRON PIN 24.75 TO THE  
 EAST. EAST 1353.72 TO 1/16<sup>TH</sup> COR.  
 1979 BARNES VOL 5 PG 561 N5-42-45E 2636.57 TO W 1/4 COR SEC  
 18 FD CUT L.S.  
 197? THOM JR. VOL 5 PG 561 2636.03 TO W 1/4 COR SEC 18,  
 2662.05 TO W 1/4 COR SEC 19, & 179-13-24 @ SW COR SEC 18  
 FROM W 1/4 COR SEC 18 TO W 1/4 COR SEC 19.  
 1979 LEE BK 30-33 "PAULSON'S ADD" FD MON. BUT STATES  
 NOTHING ABOUT IT  
 2000 LEUNEMBERGER "COUNTRYVIEW ESTATES" BK 32-484 FD L.S.  
 2000 BARNES VOL 6 PG 455 N89-38-34E 1354.30 TO 1/16<sup>TH</sup> COR &  
 N89-38-34E 2677.56 TO S 1/4 COR SEC 18.  
 2000 LUENEMBERGER PLAT BK 32 PG 484 "COUNTRYVIEW ESTATES  
 #1" FD CUT STONE. 2636.19 TO W 1/4 COR SEC 18.  
 2002 LEUNEMBERGER PLAT BK 32 PG 539 FD CUT STONE.  
 2636.19 TO W 1/4 COR SEC 18

C) Was the corner restored through acceptance of (1) an obliterated evidence location, or, (2) a found perpetuated location?

USED MY OLD OBSERVATIONS TO FD CUT L.S.

D) Describe any material discrepancy between the location of the corner as restored or reestablished and the location of that corner as previously restored or reestablished by distance and direction. Show the discrepancy on the plan view drawing under (a), above. Show the distances between the corner as previously restored or reestablished and (1) the corner as restored or reestablished, and (2) to at least 4 of the witness monuments shown on the drawing in (a), above.

I, **Donald Barnes**, hereby certify that the corner location as identified by the corner code index was determined by me under my direction and control and that this U.S. Public Land Survey Monument Record is correct and complete to the best of my knowledge and belief.

Seal  


3-08-03

Emboss

SHEET 2 OF 2

CORNER CODE **N-1**

A-E 7.08 REQUIREMENT