

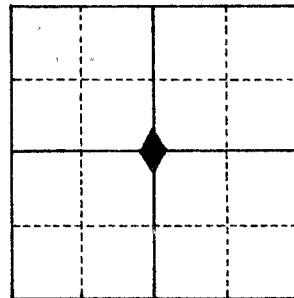
# U.S. PUBLIC LAND SURVEY MONUMENT RECORD

For Public Land Survey Corners in the  
 T. 2 N., R. 11 E. PLYMOUTH  
**CORNER CODE INDEX**

	1	2	3	4	5	6	7	8	9	10	11	12	13	14	15	16	17	18	19	20	21	22	23	24	25
A																									
B																									
C	6																								
D		5																							
E			4																						
F				3																					
G					2																				
H																									
I																									
J																									
K																									
L	7	8	9	10	11	12																			
M																									
N																									
O																									
P																									
Q																									
R																									
S																									
T																									
U																									
V																									
W																									
X																									
Y																									
Z																									

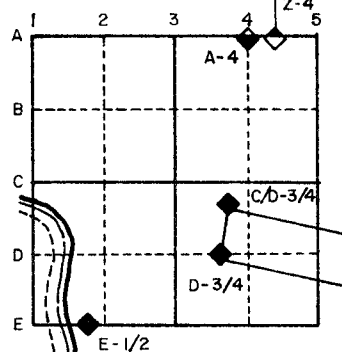
PLACE MONUMENT SYMBOL (◆) AT PROPER LOCATION ON ABOVE INDEX

For Miscellaneous Corners within Sec. 14, T. 2 N., R. 11 E.



- Above code numbers are positioned Meander, Claim, or Fractional corners of the section.
- Township corner code numbers shall be applied to the corners of above typical section.

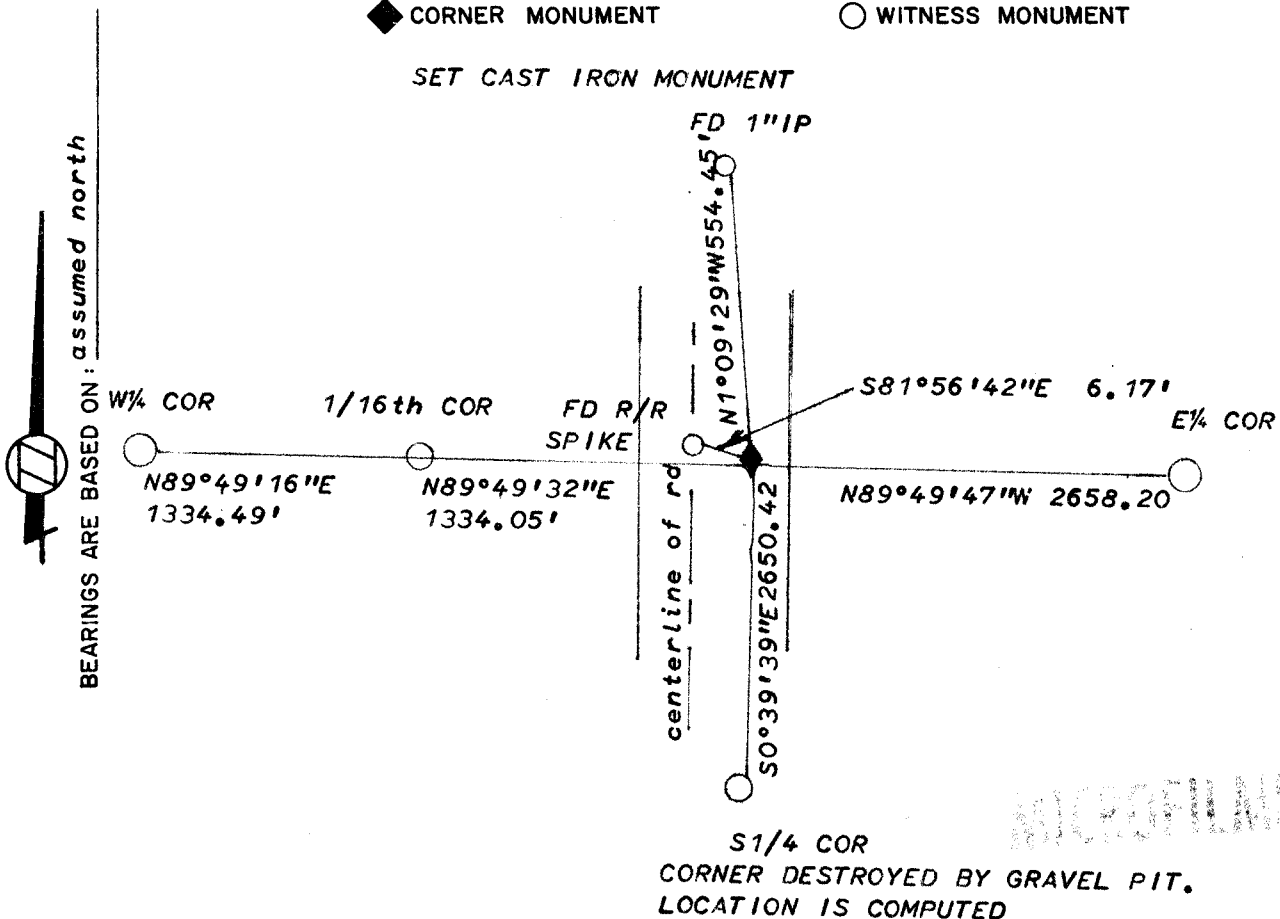
**EXAMPLE**



IF AVAILABLE  
 STATE PLANE COORDINATES

North (Y) \_\_\_\_\_ Eleve. (Z) \_\_\_\_\_  
 East (X) \_\_\_\_\_ Zone \_\_\_\_\_  
 Hor. Datum \_\_\_\_\_ Vert. Datum \_\_\_\_\_

◆ CORNER MONUMENT      ○ WITNESS MONUMENT



MICROFILMED

SHOW A PLAN VIEW DRAWING DEPICTING THE CORNER MONUMENT AND SURROUNDING PHYSICAL FEATURES, INCLUDING THE EXCAVATION AREA AND DEPTH. THE CORNER MONUMENT SHALL HAVE THE FOLLOWING CHARACTERISTICS: 1) HAVE AT LEAST TWO PREDETERMINED BREAK-OFF POINTS. 2) IF BROKEN, LEAVE A PERMANENTLY MAGNETIZED REMNANT AT THE ORIGINAL POINT. 3) MUST BE EXTENDABLE. 4) THE CAP IS INSCRIBED: ROCK COUNTY SURVEY MONUMENT - PENALTY FOR DISTURBING MARKER. 5) OR AN EXISTING CUT LIMESTONE. AN IRON PIPE 1 1/2" x 4'0" (MINIMUM) WITH AT LEAST 4 DURABLE WITNESS MONUMENTS MAY BE USED IN AREAS WHERE GROUND WATER IS WITHIN 1.0' OF THE SURFACE. IF THE CORNER IS OCCUPIED BY AN IMPROVEMENT (MANHOLE, BURIED CABLE, ETC.), ANY DURABLE, DISTINCT MONUMENT MAY BE USED AND REFERENCED WITH AT LEAST 4 DURABLE WITNESS MONUMENTS.

CORNER CODE: L-19

1. Describe any record evidence, monument evidence, occupational evidence, testimonial evidence or any other material evidence you considered and whether the monument was found or set.  
**FOUND WELL POINT SURROUNDED BY 4 LIMESTONES. DROVE DEEP AND SET CAST IRON MONUMENT ON TOP. HISTORICAL EVENTS ARE AS FOLLOWS:**

- 1. 1856 CHURCH SET HARD STONE 15"X9X9" VOL 2 PG 64
- 2. 1869 LEE SET W.O. STAKE & SURROUNDED IT BY 4 LIMESTONES VOL 2 PG 35
- 3. 1874 RUGER FOUND STAKE LEE SET VOL 2 PG 138
- 4. 1910 KERCH FOUND STAKE SURROUNDED 4 LIMESTONES. SET IRON WELL POINT VOL 3 PG 61
- 5. BATTERMAN JR. 1966 FOUND STONE SURROUNDED BY HARDEADS AND LIMESTONES. SET PUNCHED R.R. SPIKE
- 6. 1982 FOUND WELL POINT

2. Describe any material discrepancy between the location of the corner as restored or re-established and the location of that corner as previously restored or re-established.

**THE RECORDS INDICATE CHURCH SET THE CENTER EQUAL DISTANCE FROM THE 1/4 CORNERS. THEN IN 1869 LEE SET THE CENTER BY INTERSECTING THE 1/4 LINES. THIS WAS USED BY THE OTHER SURVEYORS UNTIL 1966, WHEN BATTERMAN JR. FOUND CHURCH'S CORNER. CHURCH SET THE CORNER IN CONFORMITY WITH 1853 LAWS OF WISCONSIN. LEE (1869) SET THE CENTER IN CONFORMITY WITH THE 1867 LAWS OF WISCONSIN.**

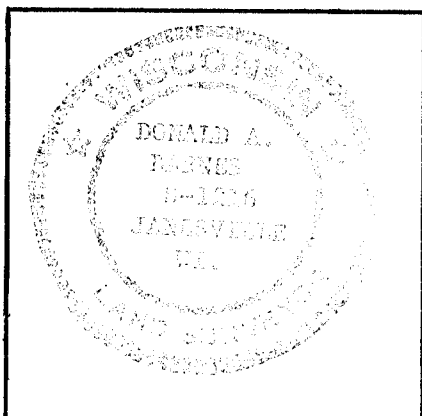
3. Was the corner restored through acceptance of an obliterated evidence location or a found perpetuated location.

**FOUND PERPETUATED LOCATION.**

4. Was the corner re-established through lost corner proportionate methods? If so, show the method, including directions and distances to other public land survey corners used as evidence or used for proportioning in determination of the corner location.

**NO**

I, Donald Barnes, hereby certify that the corner points as identified by the corner code index were, in a field survey on June 4, 1982, established, re-established, monumented, re-monumented, recovered or restored as expressed below and in conformance with the regulations and rules as required in the current manual of survey instructions of the United States Department of Interior, Bureau of Land Management.



COUNTY SURVEYOR FILING DATA

Date of Computer Entry \_\_\_\_\_

Date Received \_\_\_\_\_

Date Microfilmed \_\_\_\_\_

Treasurer's Receipt No. \_\_\_\_\_

Number of Included Sheets 0

**L19**

AFFIX YOUR LAND SURVEYOR SEAL.