

# U.S. PUBLIC LAND SURVEY MONUMENT RECORD

For Public Land Survey Corners in:

WI ADMINISTRATIVE CODE A-E 7.08 REQUIREMENT

T. 2N., R. 11E

### CORNER CODE INDEX

A	2	3	4	5	6	7	8	9	10	11	12	13	14	15	16	17	18	19	20	21	22	23	24	25
B																								
C	6																							
D																								
E																								
F																								
G	1																							
H																								
I																								
J																								
K																								
L	18																							
M																								
N																								
O																								
P	19																							
Q																								
R		20																						
S																								
T																								
U	30																							
V																								
W																								
X																								
Y	31																							
Z																								

PLYMOUTH TWP  
ROCK COUNTY WI

IF AVAILABLE  
ROCK COUNTY COORDINATES PREFERRED

North \_\_\_\_\_ Elev. \_\_\_\_\_

East \_\_\_\_\_


Hor. Datum \_\_\_\_\_ Vert. Datum \_\_\_\_\_

LATITUDE \_\_\_\_\_ ELLIPS. HT. \_\_\_\_\_


LONGITUDE \_\_\_\_\_

GPS (X) \_\_\_\_\_ TRAVERSE (X) \_\_\_\_\_

BASED ON THE FOLLOWING CONTROL:

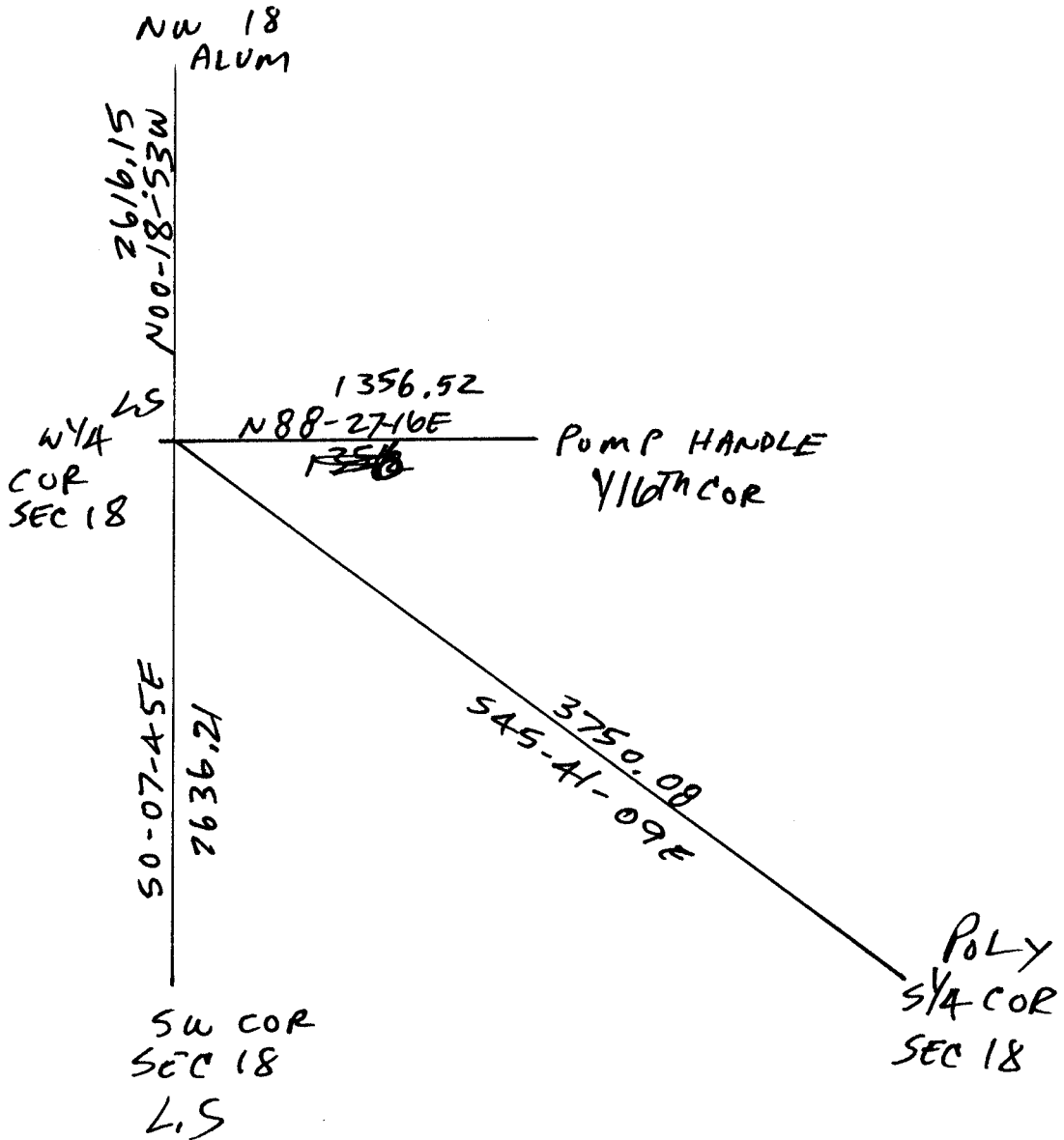
PLACE MONUMENT SYMBOL  AT PROPER LOCATION ON ABOVE INDEX

 CORNER MONUMENT

 WITNESS MONUMENT

(a)

BEARINGS ARE BASED ON:



FIELD BOOK \_\_\_\_\_ PAGE # \_\_\_\_\_

SHEET 1 OF 1

SHOW A PLAN VIEW DRAWING DEPICTING THE CORNER MONUMENT AND SURROUNDING PHYSICAL FEATURES, INCLUDING THE EXCAVATION AREA AND DEPTH.

PLANNING & ZONING COMMITTEE ADOPTED THE ABOVE FORM ON 12/2/1982

CORNER CODE L-1

PL554

(B) Describe any record evidence, monument evidence, occupational evidence, testimonial evidence or any other material evidence you considered, and whether the monument was found or placed.

1833 MULLETT NORTH ON EAST SIDE OF SECTION 13 (T2N R10E)  
1320 LEAVE PRAIRIE  
2640 SET QUARTER SECTION POST BLACK OAK 10 S43W  
9.9', BLACK OAK 14 N79W 23.76'  
4752 ENTER MARSH  
5280 SET POST CORNER SECTION 12 & 13 BUR OAK 8 S20  
½ W 111.54', BUR OAK 16 N6 ½ W 528'. LAND  
ROLLING SECOND RATE, TIMBER WB & BUR OAK.  
PART MARSH GRASS, BUSHES  
1857 CHURCH VOL 1 PG 67 VAR 9-30 2667.06 TO CENTER SEC 18  
1868 LEE VOL 1 PG 335 & MAP #3526 FD STAKE SET BY LOCKE VAR  
6-50 2617.56 TO NW COR SEC 18  
1868 LOCKE PG 81 NORTH ON WEST LINE SEC 18 VAR 7-25  
0 SET OFF 16.5' EAST  
2082.63 SET OFF 37.95' EAST  
2310 SET OFF 1.32' EAST  
2636.7 INTERSECTED ¼ LINE 20.79' EAST OF COR. FOUND  
STUMPS OF B.T.S AND OLD STAKE. COR. 4 FT  
NORTH AND 4' EAST OF INTERSECTION OF FENCES.  
VAR CORRECTED 6-40 SET OFF FROM ¼ COR 20.79'  
EAST AND CONTINUED NORTH WITH VAR 7  
4026 SET OFF 0.99' WEST  
5258.55 INTERSECTED NORTH BOUNDARY 32.01' EAST OF  
COR. VAR CORRECTED 7-16 SEPT 16<sup>TH</sup> 1868  
1914 KERCH VOL 5 PG 561 & 578 FB K-6 PG 80 1356.0 TO PUMP  
HANDLE @ S 1/16<sup>TH</sup> COR OF NW ¼ SEC 18, 2678.9 TO  
CENTER SEC 18, & ANGLE 89-45-45 @ SW COR SEC 18 FROM  
W ¼ COR SEC 18 TO S ¼ COR SEC 18  
1979 BARNES VOL 5 PG 561 S85-41-43E TO REC PUMP HANDLE,  
1323.60 PUMP HANDLE TO CENTER OF SEC 18, S85-26-20E  
5339.70 TO E ¼ COR SEC 18, S5-42-43W 2653.57 TO SW COR  
SEC 18, & N5-31-51E 2615.91 TO NW COR SEC 18. GRID  
NORTH IS 5-50-35 WEST OF TRUE NORTH  
1979 BARNES VOL 5 PG 580 FD CUT LIMESTONE 26.5' NORTH OF  
CENTER OF OLD HWY 11 PVMT.  
1979 LEUNEMBERGER MAP #6339 STATES NOTHING ABOUT MON.  
1979 BARNES VOL 6 PG 1 N5-31-51E 2615.91 NW COR SEC 18,  
S85-26-20E 2680.18 TO COMPUTED CENTER SEC 18 (DID  
NOT SEARCH FOR CENTER), & S85-26-20E 2659.70 FROM  
COMPUTED CENTER TO E ¼ COR SEC 18.  
1984 COMBS MAP #14033 FD CUT STONE.  
2000 LEUNEMBERGER "COUNTREVIEW ESTATES" BK32-484 FD L.S.  
2002 LEUNEMBERGER PLAT BK 32 PG 539 FD CUT STONE.  
2636.19 TO SW COR SEC 18

USED MY OLD OBSERVATIONS TO FD CUT L.S.

C) Was the corner restored through acceptance of (1) an obliterated evidence location, or, (2) a found perpetuated location?

ACCEPTED FD CUT L.S.

I, **Donald Barnes**, hereby certify that the corner location as identified by the corner code index was determined by me under my direction and control and that this U.S. Public Land Survey Monument Record is correct and complete to the best of my knowledge and belief.

Seal

*Donald Barnes*  
May 12, 2003  
Emboss

SHEET 1 OF 1

CORNER CODE L-1

A-E 7.08 REQUIREMENT