

PUBLIC LAND SURVEY MONUMENT RECORD

For Public Land Survey Corners in the

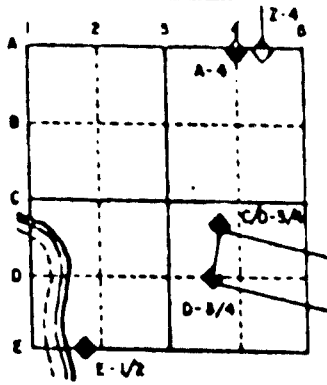
T. 2 N., R. 11 E.

CORNER CODE INDEX

	1	2	3	4	5	6	7	8	9	10	11	12	13	14	15	16	17	18	19	20	21	22	23	24	25
A																									
B																									
C																									
D																									
E																									
F																									
G																									
H																									
I																									
J																									
K																									
L																									
M																									
N																									
O																									
P																									
Q																									
R																									
S																									
T																									
U																									
V																									
W																									
X																									
Y																									
Z																									

PLACE MONUMENT SYMBOL (◆) AT PROPER LOCATION ON ABOVE INDEX

EXAMPLE



PLYMOUTH TWP
ROCK COUNTY WI

IF AVAILABLE
STATE PLANE COORDINATES

North (Y) _____ Eleve. (Z) _____
 East (X) _____ Zone _____
 Hor. Datum _____ Vert. Datum _____

◆ CORNER MONUMENT

○ WITNESS MONUMENT

BEARINGS ARE BASED ON:

(B) Describe any record evidence, monument evidence, occupational evidence, testimonial evidence or any other material evidence you considered, and whether the monument was found or placed.

- 1856 CHURCH VOL 1 PG 64 CALLS FOR 2673.99 TO CENTER OF SEC 14.
1865 LOCKE VOL 1 PG 240 CORNER LOST-SET STAKE AND SURROUNDED IT BY 3 LIMESTONES AND 1 SANDSTONE. CALLS FOR 2641.32 TO SE & SW CORNERS OF SEC 11 AND 2628.38 TO CENTER OF SEC 11.
1868 LOCKE REMON. FIELD NOTES SET 1/4 COR 13.70' WEST & 20.13' SOUTH OF TEMPORARY CORNER. CALLS FOR VAR 6-41 2653.70 TO SW & SE CORNERS OF SEC 11.
1869 LEE VOL 2 PG 2 STATES NOTHING ABOUT CORNER. CALLS FOR 2662.44 TO NE COR SEC 14 AND 2652.54 TO CENTER OF SEC 14.
1869 LEE VOL 2 PG 1 FOUND MON. CALLS FOR 2658.15 TO CENTER OF SEC 11 AND 2662.44 TO SE CORNER OF SEC 11.
1871 RUGER VOL 2 PG 67 FOUND STONE MONUMENT. CALLS FOR 2642.48 TO CENTER OF SEC 11 AND 364.24 TO STAKE DEEP WITH HH 13X10X8 ON TOP NORTH OF CORNER.
1910 KERCH VOL 3 PG 61 FOUND MON. BADLY DISINTEGRATED. SET GAS PIPE. CALLS FOR 1330.2 TO S 1/16TH COR OF THE SE 1/4 OF SEC 11, 1326.0 TO W 1/16TH COR OF THE SE 1/4, 1326.5 TO W 1/16TH COR OF THE NE 1/4 OF SEC 14, 416.55 TO CENTER OF R/R, ANGLE OF 89-25 AT S 1/4 COR SEC 11 FROM W 1/16TH COR OF SE 1/4 TO S 1/16TH COR OF SE 1/4 SEC 11, AND ANGLE OF 90-33-30 AT THE W 1/16TH COR OF SE 1/4 OF SEC 11 FROM CENTER OF SE 1/4 OF SEC 11 TO S 1/4 COR SEC 11.

FOUND 1/2" PIN SURROUNDED BY LARGE PIECES OF CUT LIMESTONE. GROUND WAS VERY WET. I WAS UNABLE TO SEARCH VERY DEEP BECAUSE OF THE WATER. I DID NOT FIND THE GAS PIPE THAT KERCH PLACED. I BELIEVE THE PIN IS INSIDE THE PIPE. PLACED CARSONITE POST ON WEST SIDE OF PIN.

C) Was the corner restored through acceptance of (1) an obliterated evidence location, or, (2) a found perpetuated location?
ACCEPTED FOUND PERPETUATED LOCATION.

D) Describe any material discrepancy between the location of the corner as restored or reestablished and the location of that corner as previously restored or reestablished by distance and direction. Show the discrepancy on the plan view drawing under (a), above. Show the distances between the corner as previously restored or reestablished and (1) the corner as restored or reestablished, and (2) to at least 4 of the witness monuments shown on the drawing in (a), above.

(E) Was the corner reestablished through lost corner proportionate methods? If so, show the method, including the directions and distances to other public land survey corners used as evidence or used for proportioning the corner location.
NO

I, Donald Barnes, hereby certify that the corner points as identified by the corner code index were, in a field survey on, MAY 19, 1995 established, re-established, monumented, re-monumented, recovered or restored as expressed below and in conformance with the regulations and rules as required in the current manual of survey instructions of the United States Department of Interior, Bureau of Land Management.

seal

May 19, 1995
Donald Barnes

EMBOSS LAND SURVEYOR SEAL

COUNTY SURVEYOR FILING DATA

Date of computer entry _____

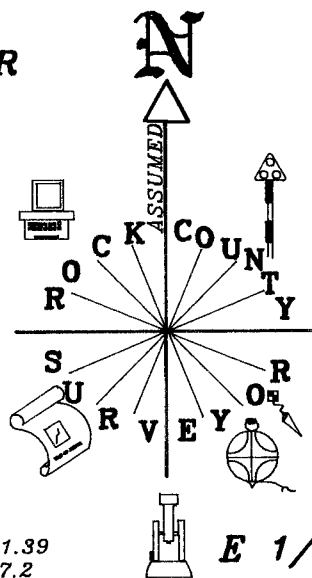
Date microfilmed _____

Number of included sheets _____
CORNER CODE

J-19

FD ALUM. MON.

N 1/4 COR
SEC 11



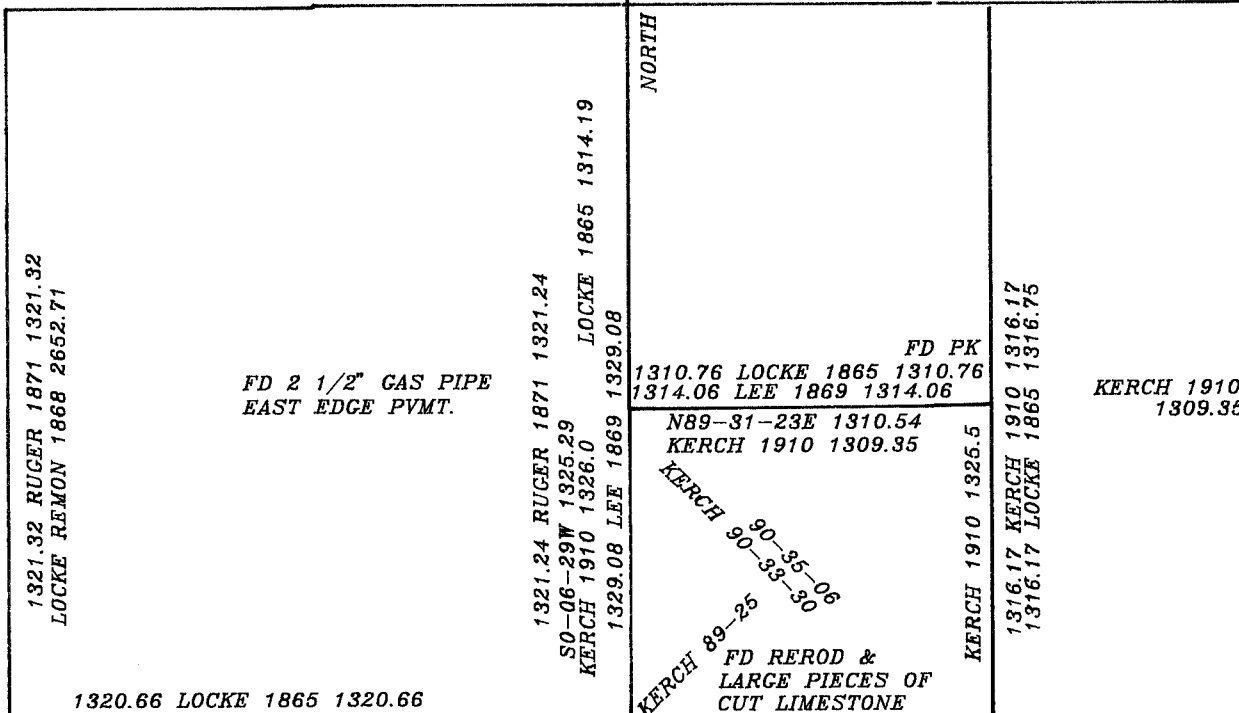
W 1/4 COR

LOCKE 1865 2600.53
RUGER 1871 2646.6

3968.60

LOCKE 1865 2601.39
LEE 1869 2587.2

E 1/4 COR



SW COR
COR

LOCKE REMON 2653.70

S 1/4 COR
SEC 11

COMBS 1974 2652.05
KERCH 1910 2653.0
CHURCH 1856 2673.99
LEE 1869 2652.54

KERCH 416.55

KERCH 1910 1330.2
KERCH 1910 87-12

KERCH 1910 1330.2
1320.66 LOCKE 1865 1320.66
LOCKE 1865 2641.32
LEE 1869 2662.44
LOCKE REMON 2653.70
BARNES 1982 1329.76

SE COR
SEC 11

1327.9 KERCH 1910 1327.9
1329.24 LEE 1869 1329.24
LOCKE REMON 1868 2655.84

*Donald Barnes
May 19, 1995*