

U.S. PUBLIC LAND SURVEY MONUMENT RECORD

For Public Land Survey Corners in:

WI ADMINISTRATIVE CODE A-E 7.08 REQUIREMENT

T. 2N., R. 1E

CORNER CODE INDEX

A	1	2	3	4	5	6	7	8	9	10	11	12	13	14	15	16	17	18	19	20	21	22	23	24	25
B																									
C	6																								
D																									
E																									
F																									
G	1																								
H																									
I																									
J																									
K																									
L																									
M	18																								
N																									
O																									
P	19																								
Q																									
R		20																							
S																									
T	30																								
U																									
V																									
W																									
X	31																								
Y																									
Z																									

PLYMOUTH TWP
ROCK COUNTY WI

IF AVAILABLE
ROCK COUNTY COORDINATES PREFERRED

North _____ Elev. _____

East _____


Hor. Datum _____ Vert. Datum _____

LATITUDE _____ ELLIPS. HT. _____

LONGITUDE _____

GPS (X) _____ TRAVERSE (X) _____

BASED ON THE FOLLOWING CONTROL:

PLACE MONUMENT SYMBOL  AT PROPER LOCATION ON ABOVE INDEX

 CORNER MONUMENT

 WITNESS MONUMENT

(a)

BEARINGS ARE BASED ON:

FIELD BOOK _____ PAGE # _____

SHEET 1 OF 4

SHOW A PLAN VIEW DRAWING DEPICTING THE CORNER MONUMENT AND SURROUNDING PHYSICAL FEATURES, INCLUDING THE EXCAVATION AREA AND DEPTH.

PLANNING & ZONING COMMITTEE ADOPTED THE ABOVE FORM ON 12/2/1982

CORNER CODE J-13

PL547

(B) Describe any record evidence, monument evidence, occupational evidence, testimonial evidence or any other material evidence you considered, and whether the monument was found or placed.

1833 HARRISON EAST ON RAND. BET 9 & 16
1980 LEFT TIMBER & ENTER MARSH
2640 TEMPY 1/4 P
5082 LEFT MASH & ENTER TIMBER
5294.52 INT. E BDY 27.72' N OF P LEVEL & WET 2ND RATE
TIMBEER ? BURR O
COR. WEST
2647.26 QUARTER SEC COR IN MARSH POST & MOUND OF
TUSSACK
5294.52 SEC COR
EAST ON RAND. BET. 10 & 15
330 LEFT TIMBER & ENTER MARSH
1980 LEFT MARSH & ENTER SEAT? TIMBER
2640 TEMPY 1/4 SEC COR.
3036 LEFT TIMBER & ENTER MARSH
4422 BROOK 7.92' CRS SE
5016 BROOK 19.8' CRS SE
5242.38 INT. E BDY 38.28' N OF P. LAND LEVEL & WET 3RD
RATE BEING MOSTLY BOTTOM ADJACENT TO
CREEKS.
COR WEST
2621.19 QUARTER SEC COR. {BURR O 12 S32E 26.4' BUR
O 13 S66W 77.22' BUR O 12 BUR O 13} MARKED
5242.38 SEC COR
NORTH BETWEEN 9 & 10
1226.94 BURR O 14
2640 QUARTER SEC COR. {BURR O 16 N31E 34.32'
BURR O 14 S67W 7.26' BURR O 16 BURR O
14} MARKED
3300 LEFT TIMBER & ENTER MARSH
3778.5 BROOK 16.5' CRS S.E.
5280 COR TO SECS 3 4 9 10 IN MARSH SET POST &
RAISED MOUND. LAND LEVEL & WET FOR LAST 1/2
MILE. ROLLING 2ND RATE FOR THE S 1/2 TIMBER
BURR O.
NORTH BETWEEN 15 & 16
594 BURR O 15
924 LEFT TIMBER & ENTER MARSH
2640 QUARTER SEC COR {BURR O 16 N40W 201.3'
BURR
O 16 S52E 216.48' BURR O 14 BURR O
16} MARKED
5016 LEFT MARSH & ENTER TIMBER
5280 COR TO SECS 9 10 15 16 {BURR O 16 N10W 66'
BURR O 24 S35W 53.46' BURR O 12 N77E 19.8'
BURR O S38E 158.4' LAND LEVEL & WET 3RD RATE
MOSTLY MARSH
1847 TWP RD REC BK 1 PG 21 BEGINNING AT THE NW COR OF SEC
3 AND 4, 9 AND 10, 15 AND 16, 21 AND 22 TO THE SW COR
OF SEC 22. SAID RD IS 66' IN WIDTH
1862 CHURCH TWP RD REC BK 1 PG 43 COMMENCING AT THE SEC
COR BETWEEN SEC 9 & 10 ON THE NORTH LINE OF SAID
SECTIONS AND RUNNING THENCE SOUTH ON SEC LINE TO
SOUTH LINE OF SAID SEC; THENCE WEST ON SEC LINE TO
THE SW COR OF SEC 8.
1864 LOCKE VOL 1 PG 199 FD STUMP OF BTs & REMAINS OF OLD
STAKE. VAR 6-15 2608.32 TO S 1/4 COR SEC 10 & VAR 6-45
2650.56 TO W 1/4 COR SEC 10
1868 LOCKE VOL 1 PG 320 & MAP #4335 COR POST OF FENCE IS
ON COR. VAR 5-22 2662.44 TO S 1/4 COR SEC 9 & VAR 6-50
2650.56 TO E 1/4 COR SEC 9

Donald Barnes
02/04/03

PL547

1868 LOCKE PG 42 COMMENCED AT COR. FOR SECS 9, 10, 15
& 16. FOUND STUMPS OF BTS IN SECS 10, 15,
& 16 COR. 1.98' E OF FIRST POST S OF COR OF
FENCE. EAST BETWEEN SECS 10 & 15 VAR
5-40
2621.19 SET TEMPORARY ¼ COR COR LOST
5247.33 INTERSECTED EAST BOUNDARY 14.19' S OF COR.
SET AS GIVEN ON PAGE 39
2623.66 SET ¼ COR 2.48' EAST AND 7.10' NORTH OF
TEMPORARY ¼ COR. COR 4.29' AND 15.18' E OF
COR OF FENCES VAR CORRECTED 5-49 AUG 29TH
1868
PG 58 EAST BETWEEN SECS 9 AND 16 VAR 6-20
1330.56 1/16TH COR SET BY SELF.
2661.12 INTERSECTED ¼ LINE 6.6' NORTH OF COR. FOUND
COR. AS SET BY SELF IN COR. OF SOD FENCE
RUNNING S AND W. (SEE COUNTY SURVEYOR
RECORD) VAR CORRECTED 6-11
CONTINUED EAST FROM ¼ COR WITH VAR 5.
5325.54 INTERSECTED EAST BOUNDARY AT COR. SEP 5
1868
PG 45 NORTH BETWEEN SECS 9 & 10 VAR 6-55
2661.12 INTERSECTED ¼ LINE AT COR. FOUND STUMPS OF
BTS AND STONE SET BY CHURCH (SEE CO. S.
RECORD) ALSO BTS TAKEN BY CHURCH. COR
0.66' SW OF POST IN FENCE
CONTINUED NORTH WITH VAR 6-20
3286.8 ENTER MARSH
3785.1 CENTER OF BRIDGE OVER BASS CREEK 21.12'
WIDE
5041.74 CENTER RR TRACK
5318.28 INTERSECTED NORTH BOUNDARY AT COR. FOUND
COR. AS SET BY SELF. SEE CO. SURVEYORS
RECORD SEC 4. COR IN CENTER OF HIGHWAY.
SEPT 3 1868
PG 44 NORTH BETWEEN SECS 15 & 16 VAR 6-50
2640 SET TEMPORARY ¼ COR. CO. LOST
4185.72 CENTER OF M&M RR
4686 BASS CREEK
5305.41 INTERSECTED NORTH BOUNDARY AT COR.
2652.71 SET ¼ COR 12.71' NORTH OF TEMPORARY ¼ COR
COR JUST EAST OF N & S FENCE SEPT 3 1868
1871 RUGER VOL 2 PG 60 STONE MON 2646.44 TO S ¼ COR SEC
10 & 2660.13 TO W ¼ COR SEC 10.
1871 RUGER VOL 2 PG 81 2618.55 TO S ¼ COR SEC 10
1873 RUGER VOL 2 PG 112 STONE MON. 2618.55 TO N ¼ COR
SEC 15
1976 BARNES VOL 5 PG 155 FD CUT STONE 0.5' DEEP TOP BROKE
OFF PLACED METAL AROUND STONE REF. SAME.
1978 BARNES VOL 5 PG 501 N88-39-01W 2665.01 TO S ¼ COR
SEC 9
2000 BARNES VOL 6 PG 455 N88-39-02W 2665.03 TO S ¼ COR
SEC 9

FD CUT L.S. 0.3' DEEP IN FARM FIELD. PLACED 3 MAGNETS 18"
DEEP ON NORTH SIDE OF L.S. N/S TREE LINE WAS REMOVED.
REFERENCE MONUMENTS TO THE SOUTH WERE DESTROYED.

Donald Barnes
02/04/03

PL547

C) Was the corner restored through acceptance of (1) an obliterated evidence location, or, (2) a found perpetuated location?

ACCEPTED FOUND BUT L.S.

D) Describe any material discrepancy between the location of the corner as restored or reestablished and the location of that corner as previously restored or reestablished by distance and direction. Show the discrepancy on the plan view drawing under (a), above. Show the distances between the corner as previously restored or reestablished and (1) the corner as restored or reestablished, and (2) to at least 4 of the witness monuments shown on the drawing in (a), above.

(E) Was the corner reestablished through lost corner proportionate methods? If so, show the method, including the directions and distances to other public land survey corners used as evidence or used for proportioning the corner location.

I, Donald Barnes, hereby certify that the corner location as identified by the corner code index was determined by me under my direction and control and that this U.S. Public Land Survey Monument Record is correct and complete to the best of my knowledge and belief.

Seal

Donald Barnes
02/04/03

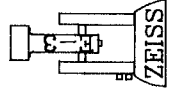
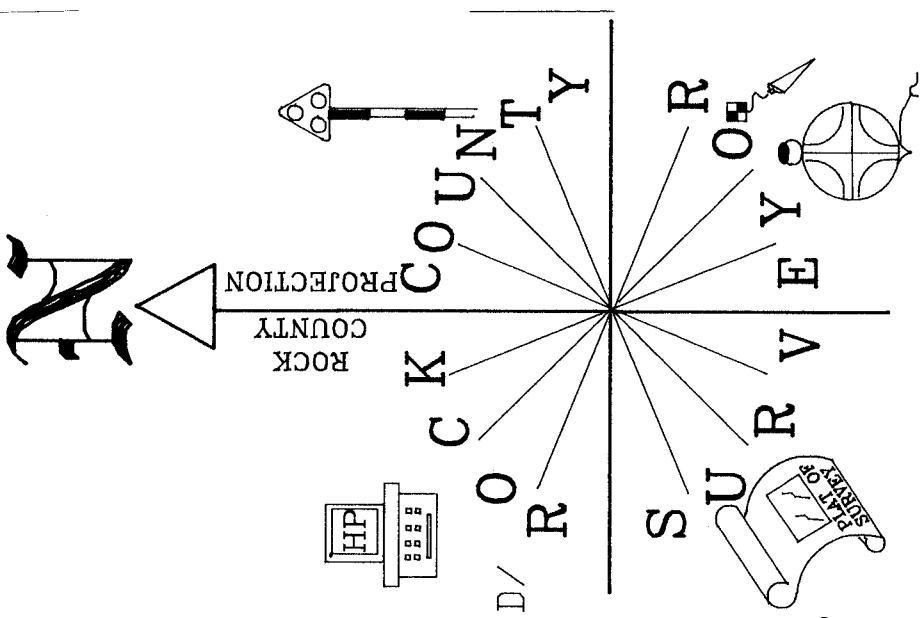
Emboss

SHEET 3 OF 4

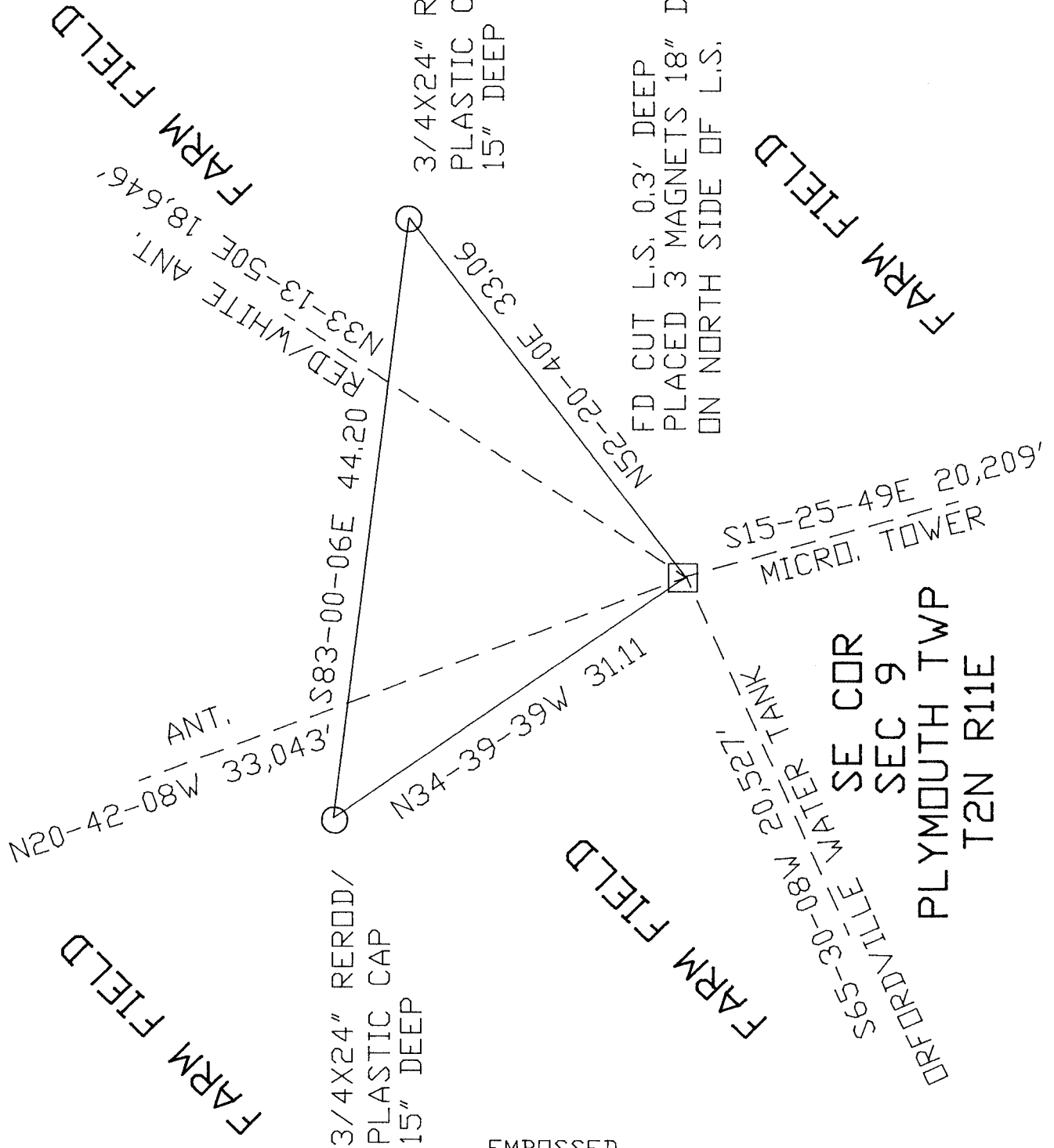
CORNER CODE

J-13

A.E. 7.08 REQUIREMENT



OBSERVATION SHEETS
35, 266, 283, 547, & 911



FARM FIELD

FARM FIELD

FARM FIELD

SE COR
SEC 9
PLYMOUTH TWP
T2N R11E

EMBOSSED
SEAL
Donald Barnes
02/04/03

J-13