

# U.S. PUBLIC LAND SURVEY MONUMENT RECORD

For Public Land Survey Corners In:

WI ADMINISTRATIVE CODE A-E 7.08 REQUIREMENT

T. 2N. R. 11E.

CORNER CODE INDEX

|   |    |   |   |   |   |    |   |   |    |    |    |    |    |    |    |    |    |    |    |    |    |    |    |    |   |
|---|----|---|---|---|---|----|---|---|----|----|----|----|----|----|----|----|----|----|----|----|----|----|----|----|---|
| 1 | 2  | 3 | 4 | 5 | 6 | 7  | 8 | 9 | 10 | 11 | 12 | 13 | 14 | 15 | 16 | 17 | 18 | 19 | 20 | 21 | 22 | 23 | 24 | 25 |   |
| A |    |   |   |   |   |    |   |   |    |    |    |    |    |    |    |    |    |    |    |    |    |    |    |    | A |
| B | 6  |   |   |   |   | 5  |   |   |    | 4  |    |    |    | 3  |    |    |    | 2  |    |    |    |    |    | 1  | B |
| C |    |   |   |   |   |    |   |   |    |    |    |    |    |    |    |    |    |    |    |    |    |    |    |    | C |
| D |    |   |   |   |   |    |   |   |    |    |    |    |    |    |    |    |    |    |    |    |    |    |    |    | D |
| E |    |   |   |   |   |    |   |   |    |    |    |    |    |    |    |    |    |    |    |    |    |    |    |    | E |
| F |    |   |   |   |   |    |   |   |    |    |    |    |    |    |    |    |    |    |    |    |    |    |    |    | F |
| G | 7  |   |   |   |   | 8  |   |   |    | 9  |    |    |    | 10 |    |    |    | 11 |    |    |    |    |    | 12 | G |
| H |    |   |   |   |   |    |   |   |    |    |    |    |    |    |    |    |    |    |    |    |    |    |    |    | H |
| J |    |   |   |   |   |    |   |   |    |    |    |    |    |    |    |    |    |    |    |    |    |    |    |    | J |
| K |    |   |   |   |   |    |   |   |    |    |    |    |    |    |    |    |    |    |    |    |    |    |    |    | K |
| L | 18 |   |   |   |   | 17 |   |   |    | 16 |    |    |    | 15 |    |    |    | 14 |    |    |    |    |    | 13 | L |
| M |    |   |   |   |   |    |   |   |    |    |    |    |    |    |    |    |    |    |    |    |    |    |    |    | M |
| N |    |   |   |   |   |    |   |   |    |    |    |    |    |    |    |    |    |    |    |    |    |    |    |    | N |
| O |    |   |   |   |   |    |   |   |    |    |    |    |    |    |    |    |    |    |    |    |    |    |    |    | O |
| P | 19 |   |   |   |   | 20 |   |   |    | 21 |    |    |    | 22 |    |    |    | 23 |    |    |    |    |    | 24 | P |
| Q |    |   |   |   |   |    |   |   |    |    |    |    |    |    |    |    |    |    |    |    |    |    |    |    | Q |
| R |    |   |   |   |   |    |   |   |    |    |    |    |    |    |    |    |    |    |    |    |    |    |    |    | R |
| S |    |   |   |   |   |    |   |   |    |    |    |    |    |    |    |    |    |    |    |    |    |    |    |    | S |
| T | 30 |   |   |   |   | 29 |   |   |    | 28 |    |    |    | 27 |    |    |    | 26 |    |    |    |    |    | 25 | T |
| U |    |   |   |   |   |    |   |   |    |    |    |    |    |    |    |    |    |    |    |    |    |    |    |    | U |
| V |    |   |   |   |   |    |   |   |    |    |    |    |    |    |    |    |    |    |    |    |    |    |    |    | V |
| W |    |   |   |   |   |    |   |   |    |    |    |    |    |    |    |    |    |    |    |    |    |    |    |    | W |
| X | 31 |   |   |   |   | 32 |   |   |    | 33 |    |    |    | 34 |    |    |    | 35 |    |    |    |    |    | 36 | X |
| Y |    |   |   |   |   |    |   |   |    |    |    |    |    |    |    |    |    |    |    |    |    |    |    |    | Y |
| Z |    |   |   |   |   |    |   |   |    |    |    |    |    |    |    |    |    |    |    |    |    |    |    |    | Z |

PLYMOUTH TWP

ROCK COUNTY WI

IF AVAILABLE  
ROCK COUNTY COORDINATES PREFERRED

North \_\_\_\_\_ Elev. \_\_\_\_\_

East \_\_\_\_\_

Hor. Datum \_\_\_\_\_ Vert. Datum \_\_\_\_\_

LATITUDE \_\_\_\_\_ ELLIPS. HT. \_\_\_\_\_

LONGITUDE \_\_\_\_\_

GPS (X) \_\_\_\_\_ TRAVERSE (X) \_\_\_\_\_

BASED ON THE FOLLOWING CONTROL:

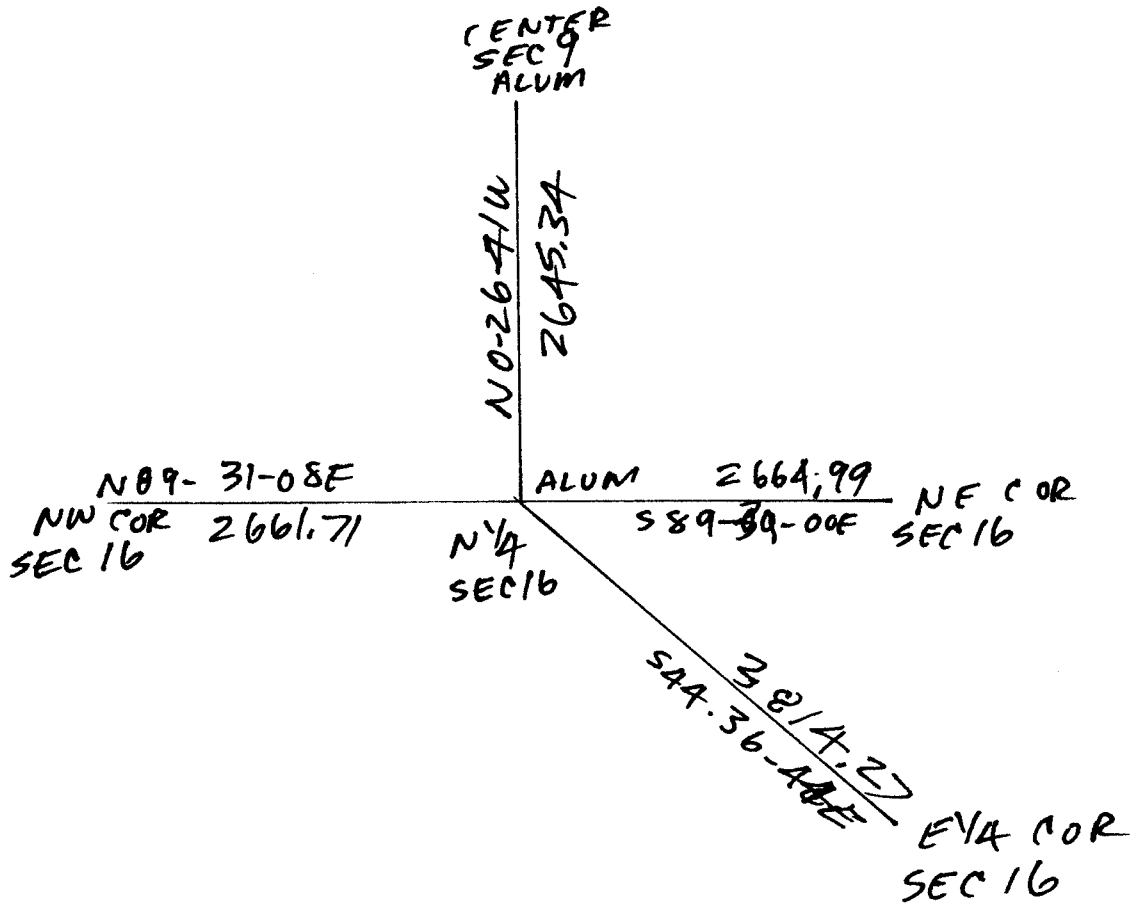
1 2 3 4 5 6 7 8 9 10 11 12 13 14 15 16 17 18 19 20 21 22 23 24 25  
PLACE MONUMENT SYMBOL  AT PROPER LOCATION ON ABOVE INDEX

CORNER MONUMENT

WITNESS MONUMENT

(a)

BEARINGS ARE BASED ON: \_\_\_\_\_



OBSERVATION SHEET 283 & 911

FIELD BOOK \_\_\_\_\_ PAGE # \_\_\_\_\_

SHEET 1 OF 2

SHOW A PLAN VIEW DRAWING DEPICTING THE CORNER MONUMENT AND SURROUNDING PHYSICAL FEATURES, INCLUDING THE EXCAVATION AREA AND DEPTH.

PLANNING & ZONING COMMITTEE ADOPTED THE ABOVE FORM ON 12/2/1982

CORNER CODE J-11

PL546

(B) Describe any record evidence, monument evidence, occupational evidence, testimonial evidence or any other material evidence you considered, and whether the monument was found or placed.

- 1833 HARRISON EAST ON RAND. BET 9 & 16  
1980 LEFT TIMBER & ENTER MARSH  
2640 TEMPY ¼ P  
5082 LEFT MASH & ENTER TIMBER  
5294.52 INT. E BDY 27.72' N OF P LEVEL & WET 2<sup>ND</sup> RATE  
TIMBER ? BURR O  
COR. WEST  
2647.26 QUARTER SEC COR IN MARSH POST & MOUND OF  
TUSSACH  
5294.52 SEC COR
- 1862 CHURCH TWP RD REC BK 1 PG 43 COMMENCING AT THE SEC  
COR BETWEEN SEC 9 & 10 ON THE NORTH LINE OF SAID  
SECTIONS AND RUNNING THENCE SOUTH ON SEC LINE TO  
SOUTH LINE OF SAID SEC; THENCE WEST ON SEC LINE TO  
THE SW COR OF SEC 8.
- 1865 LOCKE VOL 1 PG 228 & MAP #4367 FD OLD STAKE. SET HH  
15X11XB ON NORTH. VAR 6-25 2655.84 TO NW COR SEC  
16.
- 1866 LOCKE VOL 1 PG 278 FD COR SET BY SELF SEE SEC 16.  
2640 TO CENTER SEC 9 & 5280 TO N ¼ COR SEC 9
- 1868 LOCKE VOL 1 PG 320 & MAP #4335 FD COR AS SET BY SELF  
& STONE IN CORNER SOD FENCE. VAR 5-22 2662.44 TO SE  
COR SEC 9, VAR 7-10 2642.64 TO CENTER SEC 9, & VAR 6-  
40 2642.64 FROM CENTER SEC 9 TO N ¼ COR SEC 9
- 1868 LOCKE PG 58 EAST BETWEEN SECS 9 AND 16 VAR 6-20  
1328.58 1/16<sup>TH</sup> COR SET BY SELF.  
2661.12 INTERSECTED ¼ LINE 6.6' NORTH OF COR.  
FOUND COR. AS SET BY SELF IN COR. OF SOD  
FENCE RUNNING S AND W. (SEE COUNTY  
SURVEYOR RECORD) VAR CORRECTED 6-11  
CONTINUED EAST FROM ¼ COR WITH VAR 5.  
5325.54 INTERSECTED EAST BOUNDARY AT COR. SEP  
5 1868
- 1873 RUGER VOL 2 PG 111 STONE MON. VR 6-40 2674.98 TO  
CENTER SEC 16
- 1978 BARNES VOL 5 PG 501 N89-31-09W 2661.71 TO NW COR  
SEC 16, S88-39-01E 2665.01 TO SE COR SEC 9, & N0-26-  
45W 2645.6 TO CENTER SEC 9.
- 1978 BARNES VOL 5 PG 502 DUG A VERY LARGE HOLE WITH CRUZ  
AIR & FD NOTHING. SET ALUM. & REFERENCED SAME. COR  
IS EAST OF N/S DITCH. HOLE IS 17 WIDE & 23' NORTH
- 1995 LATHROP CSM VOL 19 PG 04 ALUM. MON. 2645.42 TO  
CENTER OF SEC 9 AN ALUM
- 2000 BARNES VOL 6 PG 455 N89-31-09W 2661.71 TO SW COR  
SEC 9, S88-39-02E 2665.03 TO SE COR SEC 9, & N0-26-44W  
2645.39 TO CENTER OF SEC 9

FD ALUM. MON 1.5' ABOVE GRADE & WOOD R/W POST.

*Donald Barnes*

*May 17 2003*

PL546

C) Was the corner restored through acceptance of (1) an obliterated evidence location, or, (2) a found perpetuated location?

ACCEPTED FD ~~BTLS~~ ALUM MON.

D) Describe any material discrepancy between the location of the corner as restored or reestablished and the location of that corner as previously restored or reestablished by distance and direction. Show the discrepancy on the plan view drawing under (a), above. Show the distances between the corner as previously restored or reestablished and (1) the corner as restored or reestablished, and (2) to at least 4 of the witness monuments shown on the drawing in (a), above.

(E) Was the corner reestablished through lost corner proportionate methods? If so, show the method, including the directions and distances to other public land survey corners used as evidence or used for proportioning the corner location.

I, Donald Barnes, hereby certify that the corner location as identified by the corner code index was determined by me under my direction and control and that this U.S. Public Land Survey Monument Record is correct and complete to the best of my knowledge and belief.

<sup>Seal</sup>  
Donald Barnes

Emboss May 17 2003

SHEET 2 OF 2

CORNER CODE J-11  
A.E. 7.08 REQUIREMENT