

# U.S. PUBLIC LAND SURVEY MONUMENT RECORD

For Public Land Survey Corners In:

WI ADMINISTRATIVE CODE A-E 7.08 REQUIREMENT

T. 2 N. R. 11 E.

CORNER CODE INDEX

PLYMOUTH TWP  
ROCK COUNTY WI

IF AVAILABLE  
ROCK COUNTY COORDINATES PREFERRED

A	1	2	3	4	5	6	7	8	9	10	11	12	13	14	15	16	17	18	19	20	21	22	23	24	25	A
B			6				5				4			3			2			1						B
C																										C
D																										D
E																										E
F																										F
G																										G
H																										H
I																										I
J																										J
K																										K
L																										L
M																										M
N																										N
O																										O
P																										P
Q																										Q
R																										R
S																										S
T																										T
U																										U
V																										V
W																										W
X																										X
Y																										Y
Z																										Z

North \_\_\_\_\_ Elev. \_\_\_\_\_

East \_\_\_\_\_

Hor. Datum \_\_\_\_\_ Vert. Datum \_\_\_\_\_

LATITUDE \_\_\_\_\_ ELLIPS. HT. \_\_\_\_\_

LONGITUDE \_\_\_\_\_

GPS (X) \_\_\_\_\_ TRAVERSE (X) \_\_\_\_\_

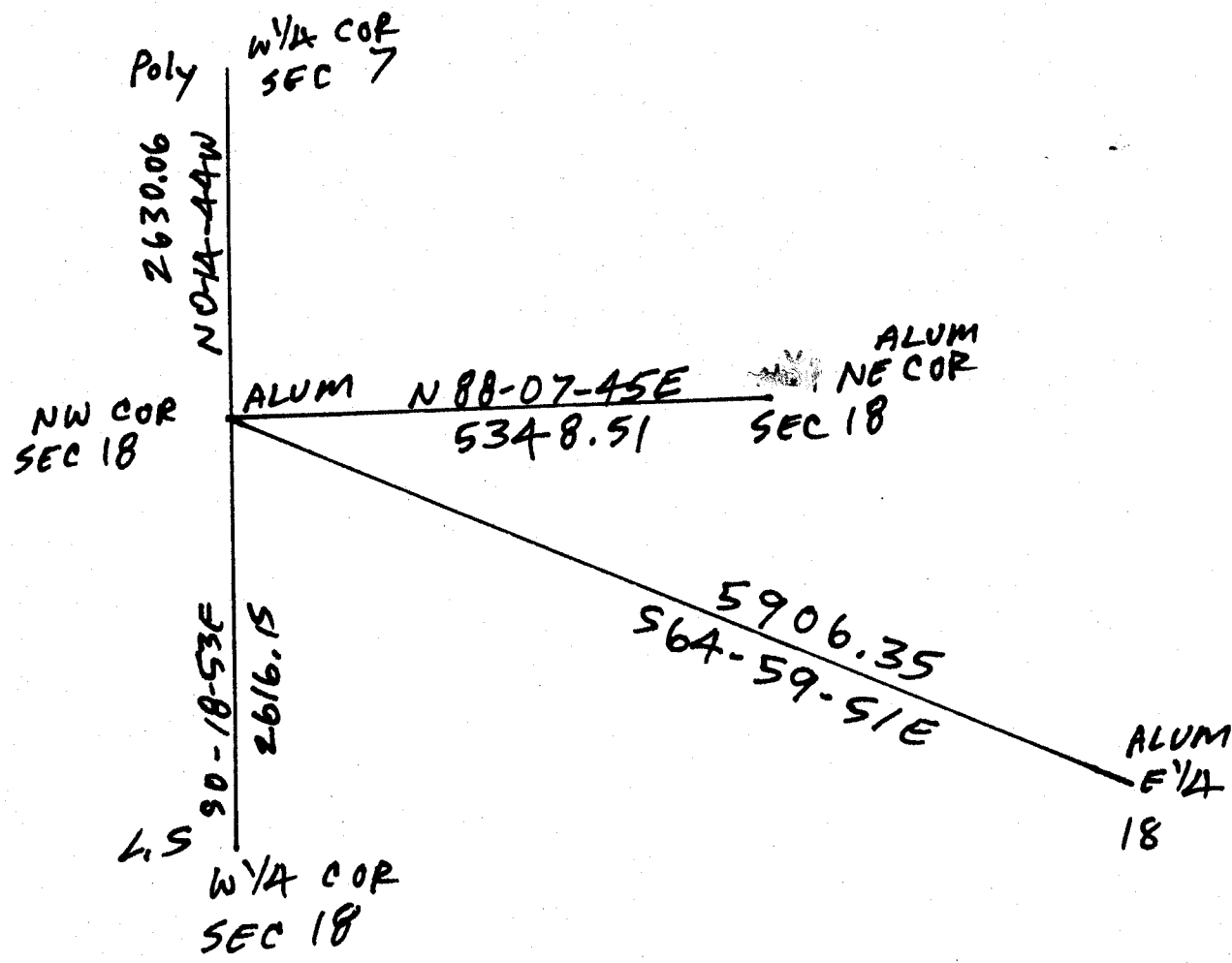
BASED ON THE FOLLOWING CONTROL:

1 2 3 4 5 6 7 8 9 10 11 12 13 14 15 16 17 18 19 20 21 22 23 24 25  
PLACE MONUMENT SYMBOL  $\blacklozenge$  AT PROPER LOCATION ON ABOVE INDEX

$\blacklozenge$  CORNER MONUMENT       $\circ$  WITNESS MONUMENT

(a)

BEARINGS ARE BASED ON:



OBSERVATION SHEET #131

FIELD BOOK \_\_\_\_\_ PAGE # \_\_\_\_\_ SHEET 1 OF 2

SHOW A PLAN VIEW DRAWING DEPICTING THE CORNER MONUMENT AND SURROUNDING PHYSICAL FEATURES, INCLUDING THE EXCAVATION AREA AND DEPTH.

PLANNING & ZONING COMMITTEE ADOPTED THE ABOVE FORM ON 12/2/1982

CORNER CODE J-1

PL541

(B) Describe any record evidence, monument evidence, occupational evidence, testimonial evidence or any other material evidence you considered, and whether the monument was found or placed.

1833 MULLETT NORTH ON EAST SIDE OF SECTION 13 (T2N R10E)  
1320 LEAVE PRAIRIE  
2640 SET QUARTER SECTION POST BLACK OAK 10 S43W  
9.9', BLACK OAK 14 N79W 23.76'  
4752 ENTER MARSH  
5280 SET POST CORNER SECTION 12 & 13 BUR OAK 8  
S20 1/2 W 111.54', BUR OAK 16 N6 1/2 W 528'.  
LAND ROLLING SECOND RATE, TIMBER WB &  
BUR OAK. PART MARSH GRASS, BUSHES  
NORTH ON EAST SIDE OF SECTION 12 (T2N R10E)  
528 LEAVE MARSH  
1584 ENTER PRAIRIE  
2640 SET QUARTER SECTION POST BUR OAK 8 N7W 211.86'  
NO OTHER  
5280 SET POST CORNER SECTION 1&12 IN PRAIRIE MADE  
MOUND LAND ROLLING SECOND RATE DRY PRAIRIE.  
BY GOOD OBSERVATION AT THIS CORNER VAR 8-15E  
SEPT 8<sup>TH</sup> 1833

1833 HARRISON WEST ON RAND. BET 7 & 18  
2640 TEMPY 1/4 P  
5314.98 INT. W. BDY 148.5' N OF P. LAND WET & LEVEL 3<sup>RD</sup>  
RATE MARSH  
COR EAST  
2674.98 QUARTER SEC COR. POST & SMALL MOUND OF  
TUSSUCKS  
5314.98 SEC COR

1833 HARRISON PLAT SW TO SE COR SEC 12 5274.06'  
1834 MILLER EAST RANDOM BETWEEN SECS 12 & 13  
396 ENTER PRAIRIE WITH SCATTERING TIMBER  
5274.06 INTERSECT SEC LINE 9.9' SOUTH POST  
LAND SAME  
WEST CORRECTED BETWEEN SECS 12 & 13  
2636.04 SET 1/4 SEC POST BUR O 10 IN N37E 30.36' BUR  
OAK 12 IN S33W 72.6'  
5274.06 SEC COR.

1857 CHURCH VOL 1 PG 66 STATES NOTHING ABOUT MON.  
2687.52 TO S 1/4 COR SEC 7

1867 LOCKE VOL 1 PG 285 FD S. BT & STUMP OF N. BT & STAKE.  
SET STAKE WITH HH ON N & S VAR 7-18 2657.82 TO E 1/4  
COR SEC 12, VAR 3-22 2657.16 TO S 1/4 COR SEC 12.

1868 LEE VOL 1 PG 335 & MAP #3526 FD MON. POST SET BY  
LOCKE. VAR 6-50 2617.56 TO W 1/4 COR SEC 18

1868 LOCKE PG 80 SOUTH ON WEST LINE SEC 7 VAR 7-15  
2631.92 INTERSECTED 1/4 LINE AT COR. FOUND COR. AS SET  
BY SELF. (SEE CO. SURVEYORS RECORD SEC 7)  
COR 4.29' EAST OF 800 FENCE ON EAST SIDE OF  
HIGHWAY AND 31.68' NORTH OF FENCE RUNNING  
WEST GOVT BT IS N19-45W 217.8'

5263.83 INTERSECTED SOUTH BOUNDARY AT COR. FOUND  
SOUTH B.T. STUMP OF NORTH B.T. AND COR AS  
SET BY SELF (SEE CO. S RECORD SEC 12 SPRING  
VALLEY) SEPT 15, 1868  
PG 81 NORTH ON WEST LINE SEC 18 VAR 7-25  
0 SET OFF 16.5' EAST  
2082.63 SET OFF 37.95' EAST  
2310 SET OFF 1.32' EAST  
2636.7 INTERSECTED 1/4 LINE 20.79' EAST OF COR. FOUND  
STUMPS OF B.T.S AND OLD STAKE. COR. 4 FT  
NORTH AND 4 EAST OF INTERSECTION OF FENCES.  
VAR CORRECTED 6-40 SET OFF FROM 1/4 COR  
20.79' EAST AND

SHEET 1 OF 2 CORNER CODE J-1

Donald Barnes  
May 12, 2003

PL541

CONTINUED NORTH WITH VAR 7

- 4026 SET OFF 0.99' WEST  
5258.55 INTERSECTED NORTH BOUNDARY 32.01' EAST OF  
COR. VAR CORRECTED 7-16 SEPT 16<sup>TH</sup> 1868  
PG 82 EAST BETWEEN SECS 7 AND 18 VAR 7-52
- 2640 SET TEMPORARY 1/4 COR  
5345.34 INTERSECTED EAST BOUNDARY 86.46' SOUTH OF  
COR. COR LOST SEE PAGE 77 VAR CORRECTED 8-  
48
- 2690.16 SET 1/4 COR 50.16' EAST AND 43.23' NORTH OF  
TEMPORARY COR. SURROUNDED MONUMENT BY  
PLANK PILES. SEP 16 1868
- 1869 RUBER VOL 2 PG 9 STONE MON. SET BY LOCKE VAR 8-40  
2687.52 TO S 1/4 COR SEC 7.
- 1874 RUBER VOL 2 PG 132 VAR 3-22 2657.16 TO N 1/4 COR SEC  
13. T2N R10E
- 1979 BARNES VOL 5 PG 561 S5-31-51W 2615.91 TO W 1/4 COR  
SEC 18. CALLS FOR GRID NORTH 5-50-35 WEST OF TRUE  
NORTH.
- 1979 BARNES VOL 5 PG 580 FD CUT L.S. THE TOP 3/4 OF THE  
STONE WAS BROKE OFF & LEANING AT A 60 DEGREE ANGLE.  
REPLACED STONE WITH AN ALUM. MON. NE OF FENCE INT.  
ON SOUTH SIDE OF DRAINAGE DITCH.
- 1979 BARNES VOL 6 PG 1 S86-01-35E 2691.22 TO S 1/4 COR SEC  
7, S5-31-51W 2615.91 TO W 1/4 COR SEC 18, & N5-36-08E  
2630.13 TO W 1/4 COR SEC 7.
- 1989 BARNES VOL 6 PG 402 FD ALUM. MON. N0-52-50W 2630.15  
TO W 1/4 COR SEC 7 & N87-29-39E 5348.40 TO S 1/4 COR SEC  
7.

USED MY 1989 OBSERVATIONS.

C) Was the corner restored through acceptance of (1) an obliterated evidence location, or, (2) a found perpetuated location?

ACCEPTED ALUM. MON.

D) Describe any material discrepancy between the location of the corner as restored or reestablished and the location of that corner as previously restored or reestablished by distance and direction. Show the discrepancy on the plan view drawing under (a), above. Show the distances between the corner as previously restored or reestablished and (1) the corner as restored or reestablished, and (2) to at least 4 of the witness monuments shown on the drawing in (a), above.

(E) Was the corner reestablished through lost corner proportionate methods? If so, show the method, including the directions and distances to other public land survey corners used as evidence or used for proportioning the corner location.

I, Donald Barnes, hereby certify that the corner location as identified by the corner code index was determined by me under my direction and control and that this U.S. Public Land Survey Monument Record is correct and complete to the best of my knowledge and belief.

Seal

Donald Barnes

May 12, 2003

Emboss

SHEET 2 OF 2

CORNER CODE

J-1

A-E 7.08 REQUIREMENT