

Paper weight-110# (minimum)

Black nonfading ink required

U.S. PUBLIC LAND SURVEY MONUMENT RECORD

For Public Land Survey Corners In:

WI ADMINISTRATIVE CODE A-E 7.08 REQUIREMENT

T. 4 N. R. 12 E. 4th P.M.

REV 10/23/2004

USMONREC.DWG

CORNER CODE INDEX

A	1	2	3	4	5	6	7	8	9	10	11	12	13	14	15	16	17	18	19	20	21	22	23	24	25	A
B																										B
C																										C
D																										D
E																										E
F																										F
G																										G
H																										H
J																										J
K																										K
L																										L
M																										M
N																										N
O																										O
P																										P
Q																										Q
R																										R
S																										S
T																										T
U																										U
V																										V
W																										W
X																										X
Y																										Y
Z																										Z

FULTON TWP
ROCK COUNTY WI

IF AVAILABLE
ROCK COUNTY COORDINATES PREFERRED

North _____ Elev. _____

East _____

Hor. Datum _____ Vert. Datum _____

LATITUDE _____ ELLIPS. HT. _____

LONGITUDE _____

NAD83(91) _____ NETWORK ADJ. YR _____

GPS (X) _____ TRAVERSE (X) _____

BASED ON THE FOLLOWING CONTROL:

PLACE MONUMENT SYMBOL AT PROPER LOCATION ON ABOVE INDEX

CORNER MONUMENT

WITNESS MONUMENT

(a)

BEARINGS ARE BASED ON: -----

FIELD BOOK _____ PAGE # _____

SHEET 1 OF 4

SHOW A PLAN VIEW DRAWING DEPICTING THE CORNER MONUMENT AND SURROUNDING PHYSICAL FEATURES, INCLUDING THE EXCAVATION AREA AND DEPTH.

PLANNING & ZONING COMMITTEE ADOPTED THIS FORM ON 12/2/1982

CORNER CODE V-21

FU611

(B) Describe any record evidence, monument evidence, occupational evidence, testimonial evidence or any other material evidence you considered, and whether the monument was found or placed.

- 1836 (JULY) BURNHAM NORTH BETWEEN SECTIONS 35 & 36
1531.86 BUR OAK 12 IN DIA
2640 SET 1/4 SEC POST BUR OAK 14 S88W 18.48' BUR OAK 12 N75E 41.58'
NO STATIONS
5313 SET POST COR TO 25,26,35, & 36 BUR OAK 8 S14W 25.74' BUR OAK 12 N54E 42.9' FIRST RATE BUR OAK OPENINGS GENTLY ROLLING
- 1836 (JULY 11) BURNHAM EAST RANDOM BETWN SECS 26 & 35
5287.26 INT EAST BOUNDY 6.6' NORTH FIRST RATE W & BUR OAK OPENINGS
WEST CORRECTED BETWN 35 & 26
2451.9 W OAK 18 IN DI
2643.3 SET 1/4 SEC POST W OAK 16 N28W 34.32' W OAK 18 S67W 33.66'
NO STATIONS
5287.26 TO CORNERS
- 1836 (JULY) BURNHAM NORTH BETWEEN SECTIONS 25 & 26
1279.08 DOUBLE W. OAK 20 IN DI
2640 SET 1/4 SEC POST BUR OAK 12 S22W 41.58'; BUR OAK 8 N43W 36.96'
2970 BUR OAK 12 IN DI
4847.7 Y. OAK 30 IN DI
5280 SET POST COR TO 23,24,25&26 W. OAK 12 S56 1/2E 39.6', W. OAK 18 S33 1/2W 25.74'
SOUTH HALF FIRST RATE BUR OAK OPENINGS
NORTH HALF VERY BROKEN W. Y & BUR OAK OPENINGS
- 1836 (JULY) BURNHAM EAST RANDOM BETW. 25 & 36
5238.42 INT. RANGE LINE AT STAKE
SAME
WEST MARKED LINE BETW. 36 & 25
NO STATIONS
2618.88 SET 1/4 SEC POST BUR OAK 14 N20W 15.18' BUR OAK 10 S48E 25.08'
2694.78 BUR OAK 10" IN DI.
5238.42 TO CORNERS
- 1843 STEBBINS TWP RD BK 1 PG 4 BEGINNING ON THE LINE BETWEEN SECTIONS 25 & 26 T4N R12E, 1735.8' NORTH OF SECTIONS 25 & 26, 35 & 36 OF SAID TOWN & RANGE, THENCE SOUTH ON SECTION LINE 2244', SET A POST ON LINE BETWEEN 35 & 36 508.2' SOUTH OF CORNER, S19-30E 726' TO THE INTERSECTION OF SAID ROAD, SET A POST. BURR OAK S75-30E 42.24' AND THE WHOLE LENGTH OF THE ROAD THUS ALTERED AND SURVEYED IS 1/2 MILE AND 330'. COURSES GIVEN ACCORDING THE TRUE MERIDIAN.
- 1939 WIDOT USH 51 #4724 SHOWS ON EAST SIDE OF R/W. STATES NOTHING ABOUT MON.
- 1966 BATTERMAN VOL 4 PG 81 FD 1" PIPE SET BY SHIMEALL & REF. SAME. BELDIT SET SHOWS ONLY THE 1972 TIES.
- 1969 SHIMEALL #1372 CALLS FOR COR BUT STATES NOTHING ABOUT MON. SET A PIN 425 NORTH OF COR.
- 1972 BATTERMN VOL 4 PG 81 SHOWS A 1966 SET OF TIES THAT ARE DIFFERENT THAN THE BELDIT SET, BUT ALSO SHOWS THE BELDIT SET WITH THE 1972 DATE AS COPIES FROM THE BELDIT SET.
- 1972 LEE #1388 STATES NOTHING ABOUT MON. 2655.41 TO S 1/4 COR SEC 26, 2646.47 TO E 1/4 COR SEC 26, & ANGLE 90-13-24 @ SE COR SEC 26 FROM S 1/4 COR TO E 1/4 COR SEC 26.
- 1972 SHARKEY CSM VOL 2 PG 209 STATES NOTHING ABOUT MON.
- 1972 LEE CSM VOL 2 PG 348 STATES NOTHING ABOUT MON. WESTERLY 397.46' TO CENTER OF STH 51.

SHEET 1 OF 4
CORNER CODE V-21

Donald Baines
AUG 21, 2007

FU611

- 1972 SHIMEALL CSM VOL 2 PG 359 FD PIPE
1972 LEE CSM VOL 3 PG 29 STATES NOTHING ABOUT MON.
WESTERLY 397.46 TO CENTER OF STH 51
1973 SCHIMEALL CSM VOL 3 PG 77 IRON PIPE. WESTERLY 397.46'
TO CENTER OF STH 51
1974 SCHROEDER CSM VOL 3 PG 340 STATES NOTHING ABOUT
MON
1974 SCHROEDER #1358 STATES NOTHING ABOUT MON. WESTERLY
459.86 ALONG SOUTH LINE OF SE 1/4 SEC 26 TO INT. OF
WEST R/W LINE OF STH 51
1975 SCHROEDER CSM VOL 5 PG 50 STATES NOTHING ABOUT MON.
459.86 TO WESTERN R/W OF STH 51.
1976 LEE CSM VOL 6 PG 47 C.I. 397.46 TO CENTER OF STH 51
1977 COMBS CSM VOL 7 PG 150 C.I. EASTERLY 1313.43 TO 1/16TH
COR A FD IRON ROD.
1977 BARNES VOL 5 PG 287 THERE IS A PROBLEM WITH THE
CENTER OF SEC 26. MR. SHIMEALL SUPPOSEDLY SET THE
CENTER AT THE INTERSECTION OF THE E/W & N/S 1/4 LINES.
SINCE THEN MANY SURVEYS BY MR SHIMEALL AND OTHER
SURVEYORS HAVE BEEN TIED TO THIS POINT. I WAS
REQUESTED TO VERIFY THE LOCATION OF THE E 1/4 COR AND
THE CENTER. I TRAVERSED THE SECTION AND TIED INTO THE
QUARTER CORNERS, SE COR, AND CENTER OF SEC 26 AS SET
BY SHIMEALL AND LEE INDICATES THEY USED THE SAME
CORNER. THE N 1/4 COR AGREES WITH THE SHORT TIES THAT
MR SHIMEALL HAD ON A PLAT OF SURVEY. MY
COMPUTATIONS SHOW THAT THE INTERSECTION OF THE E/W
AND N/S 1/4 LINES IS AS RECORDED BY LEE ON THE PLAT OF
SURVEY DATED OCT 30 1872.
1978 BARNES VOL 5 PG 288 C.I.
1977 BARNES VOL 5 PG 342 INSTALLED RISERS ON C.I. MON
1978 COMBS CSM VOL 8 PG 342 STATES NOTHING ABOUT MON.
WESTERLY 397.36 TO CENTER OF STH 51
1981 BARNES VOL 6 PG 17 SHOWS REC DISTANCES
1988 COMBS CSM VOL 13 PG 301 STATES NOTHING ABOUT MON.
459.86 TO WEST R/W LINE OF STH 51.
1994 SCHROEDER CSM VOL 17 PG 289 STATES NOTHING ABOUT
MON.
1994 SCHROEDER CSM VOL 17 PG 344 STATES NOTHING ABOUT
MON.
1994 COMBS CSM VOL 18 PG 57 C.I. 2655.55 TO S 1/4 COR SEC 26.
2002 COMBS CSM VOL25 PG 279 FD CAST IRON MON. 1315.43 TO
SE COR OF THE SW 1/4 OF THE SW 1/4 OF SEC 25, ANGLE OF
89-35-50 @ SW COR SEC 25 FROM W 1/4 COR SEC 25 TO SE
COR OF THE SW 1/4 OF THE SW 1/4 OF SEC 25
2002 COMBS #14509
2002 BARNES V-21 ALLIANT ENERGY COMPANY PROVIDED THE
FOLLOWING STATE PLANE COORDINATES. THEY WERE
DETERMINED BY RTK GPS. I CONVERTED THEM TO ROCK
COUNTY PROJECTION: 283,850.15; 2,228,084.42E/W
NAD83(91) COUNTY=302,576.12; 490,486.37
2004 COMBS CSM VOL 27 PG 322 FD C.I. NORTH ALONG SEC LINE
1204.08 TO POB.
2004 BARNES V-23 FD CI. NB9-32-40E 1315.44 TO FD PIN.

Donald Barnes

Aug 21 2007

SHEET 2 OF 4
CORNER CODE V-21

FU611

I FOUND A C.I. MON & NE REF. PIPE. SE REF. PIPE APPEARS TO HAVE BEEN DESTROYED BY UNDERGROUND CABLES.

C) Was the corner restored through acceptance of (1) an obliterated evidence location, or, (2) a found perpetuated location?

ACCEPTED THE FOUND CI.

D) Describe any material discrepancy between the location of the corner as restored or reestablished and the location of that corner as previously restored or reestablished by distance and direction. Show the discrepancy on the plan view drawing under (a), above. Show the distances between the corner as previously restored or reestablished and (1) the corner as restored or reestablished, and (2) to at least 4 of the witness monuments shown on the drawing in (a), above.

NONE

(E) Was the corner reestablished through lost corner proportionate methods? If so, show the method, including the directions and distances to other public land survey corners used as evidence or used for proportioning the corner location.

NO

I, **Donald Barnes**, hereby certify that the corner location as identified by the corner code index was determined by me under my direction and control and that this U.S. Public Land Survey Monument Record is correct and complete to the best of my knowledge and belief.

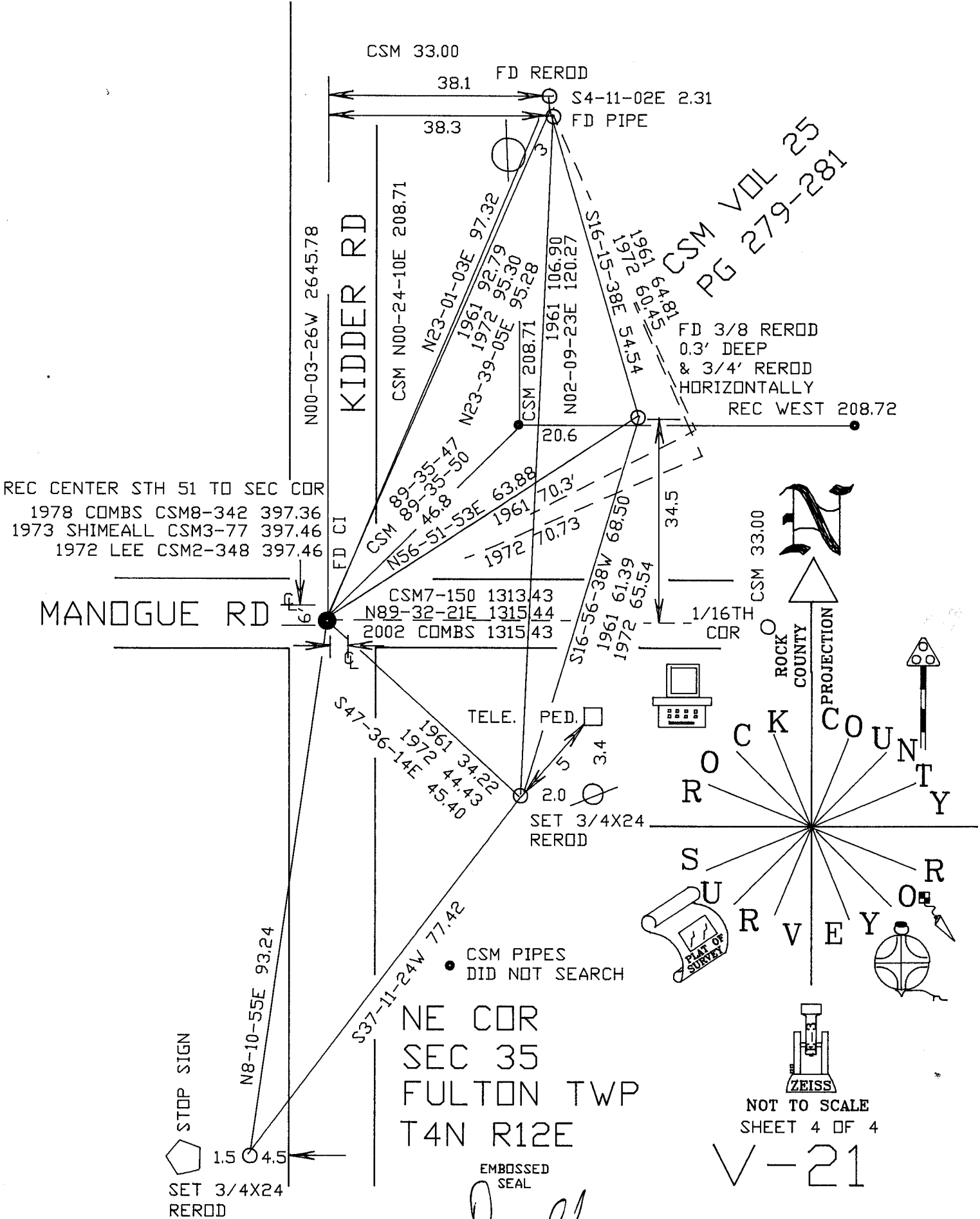
Donald Barnes
Seal
Emboss

SHEET 3 OF 4

Aug 21 2007

CORNER CODE **V-21**

A.E. 7.08 REQUIREMENT



CSM VOL 25
PG 279-281

Donald
Baines

AUG 21 2007

U.S. PUBLIC LAND SURVEY MONUMENT RECORD

For Public Land Survey Corners In:

WI ADMINISTRATIVE CODE A-E 7.08 REQUIREMENT

T. A N. R. 12 E.

CORNER CODE INDEX

FULTON TWP

ROCK COUNTY WI

IF AVAILABLE

ROCK COUNTY COORDINATES PREFERRED

1	2	3	4	5	6	7	8	9	10	11	12	13	14	15	16	17	18	19	20	21	22	23	24	25	
A																									A
B																									B
C																									C
D																									D
E																									E
F																									F
G																									G
H																									H
I																									I
J																									J
K																									K
L																									L
M																									M
N																									N
O																									O
P																									P
Q																									Q
R																									R
S																									S
T																									T
U																									U
V																									V
W																									W
X																									X
Y																									Y
Z																									Z

North 302,576.12 Elev. _____

East 490,486.37

Hor. Datum NAD83(91) Vert. Datum _____

LATITUDE _____ ELLIPS. HT. _____

LONGITUDE _____

GPS (X) TRAVERSE (X) _____

BASED ON THE FOLLOWING CONTROL:

1 2 3 4 5 6 7 8 9 10 11 12 13 14 15 16 17 18 19 20 21 22 23 24 25
PLACE MONUMENT SYMBOL AT PROPER LOCATION ON ABOVE INDEX

CORNER MONUMENT WITNESS MONUMENT

BEARINGS ARE BASED ON:

THE ALLIANT ENERGY COMPANY PROVIDED THE FOLLOWING STATE PLANE COORDINATES. THEY WERE DETERMINED BY RTK GPS. I CONVERTED THEM TO ROCK COUNTY PROJECTION

283,850.15 N/S
2,228,084.42 E/W STATE PLANE

Ronald Baines
Oct 4 2002

FIELD BOOK _____ PAGE # _____ SHEET _____ OF _____

SHOW A PLAN VIEW DRAWING DEPICTING THE CORNER MONUMENT AND SURROUNDING PHYSICAL FEATURES, INCLUDING THE EXCAVATION AREA AND DEPTH.

PLANNING & ZONING COMMITTEE ADOPTED THE ABOVE FORM ON 12/2/1982

CORNER CODE V21