

U.S. PUBLIC LAND SURVEY MONUMENT RECORD

For Public Land Survey Corners in:

WI ADMINISTRATIVE CODE A-E 7.08 REQUIREMENT

T. 4N., R. 12E

CORNER CODE INDEX

A	1	2	3	4	5	6	7	8	9	10	11	12	13	14	15	16	17	18	19	20	21	22	23	24	25
B																									
C	6						5					A			3					2				1	
D																									
E																									
F																									
G	7						8					9			10					11				12	
H																									
I																									
J																									
K	13						11					16			15					14				13	
L																									
M																									
N																									
O																									
P	19						20					21			22					23				24	
Q																									
R																									
S																									
T	30						29					28			27					26				25	
U																									
V																									
W																									
X	31						32					33			34					35				36	
Y																									
Z																									

FULTON TWP

ROCK COUNTY WI

IF AVAILABLE
ROCK COUNTY COORDINATES PREFERRED

North _____ Elev. _____

East _____

Hor. Datum _____ Vert. Datum _____

LATITUDE _____ ELLIPS. HT. _____

LONGITUDE _____

GPS (X) _____ TRAVERSE (X) _____

BASED ON THE FOLLOWING CONTROL:

PLACE MONUMENT SYMBOL AT PROPER LOCATION ON ABOVE INDEX

CORNER MONUMENT

WITNESS MONUMENT

(a)

BEARINGS ARE BASED ON:

OBSERVATION SHEETS

FIELD BOOK _____ PAGE # _____

SHEET 1 OF 2

SHOW A PLAN VIEW DRAWING DEPICTING THE CORNER MONUMENT AND SURROUNDING PHYSICAL FEATURES, INCLUDING THE EXCAVATION AREA AND DEPTH.

PLANNING & ZONING COMMITTEE ADOPTED THE ABOVE FORM ON 12/2/1982

CORNER CODE X-21

fu619

(B) Describe any record evidence, monument evidence, occupational evidence, testimonial evidence or any other material evidence you considered, and whether the monument was found or placed.

- 1867 LOCKE VOL 1 PG 297 FD STUMPS OF W. BT & WHERE E. B.T. WAS DUG OUT & OLD STAKE. RESET STAKE. USED TO SUBDIVIDE SEC 36.
- 1875 RUGER VOL 2 PG 188 FD STAKE & STUMPS OF SW BT & WHERE STUMPS OF SE. BT HAD BEEN DUG UP. SET STAKE SURROUNDED BY 3 HH. VAR 5-48 2641.76 TO SE COR SEC 35, VAR 6-46 2657.82 TO CENTER OF SEC 35, 5301.62 TO W 1/4 COR SEC 35.
- 1875 RUGER VOL 2 PG 190 STAKE SURROUNDED BY 3 HH. SEE BK 2 PG 143. VAR 5-48 2641.76.
- 1939 SUNNY VOL 3 PG 446 SET 2"X4" C.I. ROUND MON. IN THE CONC. PVMT. 2663.9 TO FENCE INT. AT CENTER OF SEC 35; 2632.8 TO N/S FENCE AT CENTER OF SEC 36, & 2646.2 TO SE COR SEC 35. REFERENCED COR WITH TREES.
- 1977 BARNES VOL 5 PG 374 FD C.I. & REFERENCED SAME.
- 1979 BARNES VOL 6 PG 3 FD BRASS PLUG & UNDER THAT FD IRON PIPE. REPLACED WITH ALUM MON.

FD ALUM. MON. & REFERENCE MONUMENTS.

C) Was the corner restored through acceptance of (1) an obliterated evidence location, or, (2) a found perpetuated location?

ACCEPTED FOUND PERPETUATED LOCATION.

D) Describe any material discrepancy between the location of the corner as restored or reestablished and the location of that corner as previously restored or reestablished by distance and direction. Show the discrepancy on the plan view drawing under (a), above. Show the distances between the corner as previously restored or reestablished and (1) the corner as restored or reestablished, and (2) to at least 4 of the witness monuments shown on the drawing in (a), above.

(E) Was the corner reestablished through lost corner proportionate methods? If so, show the method, including the directions and distances to other public land survey corners used as evidence or used for proportioning the corner location.

I, Donald Barnes, hereby certify that the corner location as identified by the corner code index was determined by me under my direction and control and that this U.S. Public Land Survey Monument Record is correct and complete to the best of my knowledge and belief.

seal

Donald Barnes
May 12, 1999
emboss

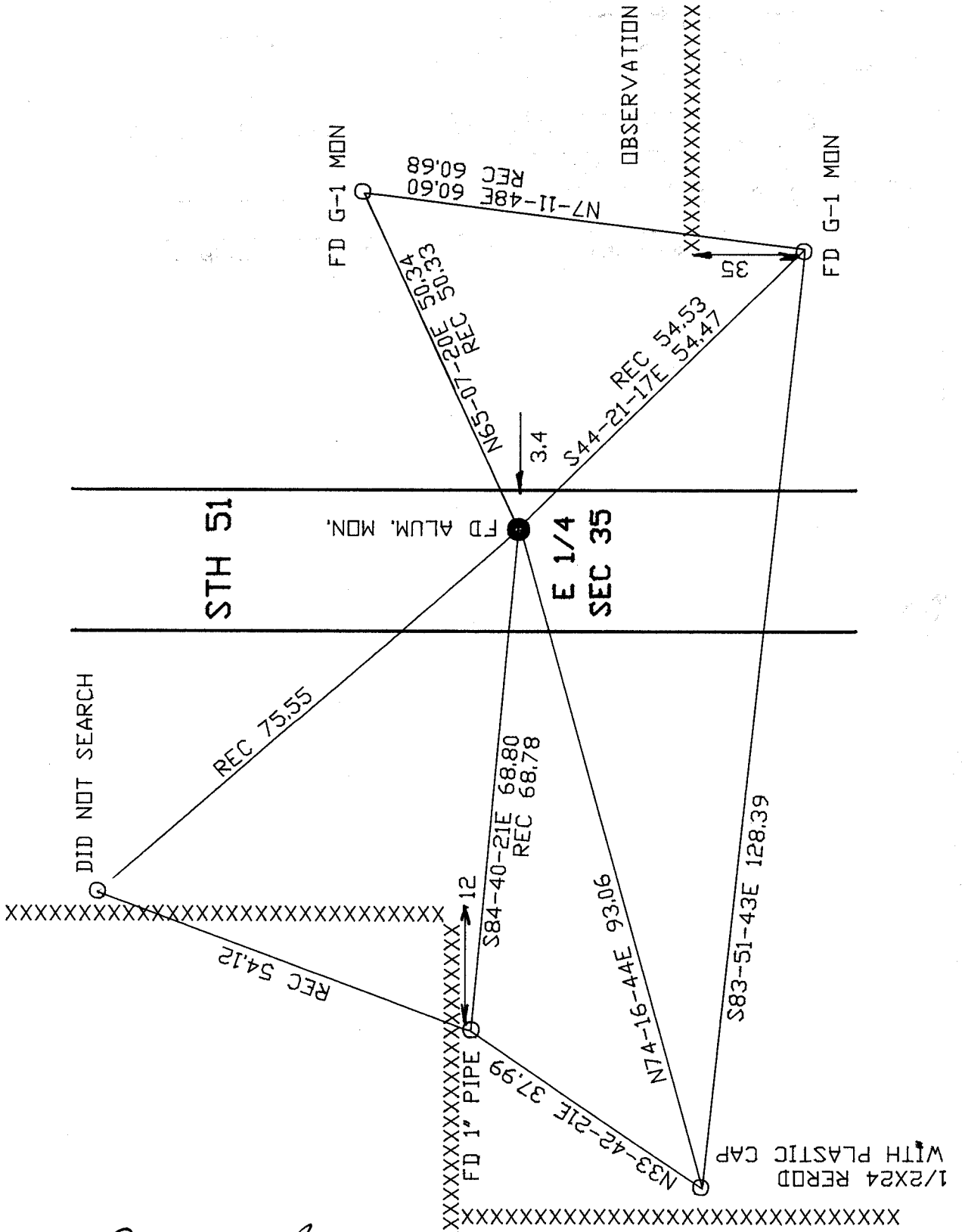
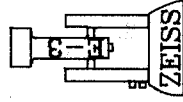
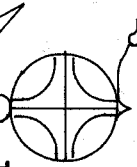
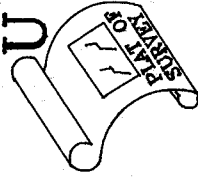
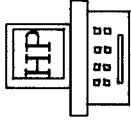
Number of included sheets **1**

CORNER CODE **X-21**

A

ASSUMED PROJECTION

ROCK COUNTY SURVEY



EMBOSSED SEAL
Donald Barnes
 May 12, 1999

X-251