

# U.S. PUBLIC LAND SURVEY MONUMENT RECORD

For Public Land Survey Corners in:  
T. 4N., R. 12E

WI ADMINISTRATIVE CODE A-E 7.08 REQUIREMENT

### CORNER CODE INDEX

A	1	2	3	4	5	6	7	8	9	10	11	12	13	14	15	16	17	18	19	20	21	22	23	24	25
B																									
C	6				5				4				3					2						1	
D																									
E																									
F																									
G	1				8				9				10					11						12	
H																									
J																									
K																									
L	18				17				16				15				14							13	
M																									
N																									
O																									
P	19				20				21				22				23							24	
Q																									
R																									
S																									
T	30				29				28				27				26							25	
U																									
V																									
W																									
X	31				32				33				34				35							36	
Y																									
Z																									

FULTON TWP

ROCK COUNTY WI

IF AVAILABLE  
ROCK COUNTY COORDINATES PREFERRED

North \_\_\_\_\_ Elev. \_\_\_\_\_

East \_\_\_\_\_

Hor. Datum \_\_\_\_\_ Vert. Datum \_\_\_\_\_

LATITUDE \_\_\_\_\_ ELLIPS. HT. \_\_\_\_\_

LONGITUDE \_\_\_\_\_

GPS (X) \_\_\_\_\_ TRAVERSE (X) \_\_\_\_\_

BASED ON THE FOLLOWING CONTROL:

PLACE MONUMENT SYMBOL  AT PROPER LOCATION ON ABOVE INDEX

CORNER MONUMENT

WITNESS MONUMENT

(a)

BEARINGS ARE BASED ON:

FIELD BOOK \_\_\_\_\_ PAGE # \_\_\_\_\_

SHEET 1 OF 3

SHOW A PLAN VIEW DRAWING DEPICTING THE CORNER MONUMENT AND SURROUNDING PHYSICAL FEATURES, INCLUDING THE EXCAVATION AREA AND DEPTH.

PLANNING & ZONING COMMITTEE ADOPTED THE ABOVE FORM ON 12/2/1982

CORNER CODE V-23

FU612^

(B) Describe any record evidence, monument evidence, occupational evidence, testimonial evidence or any other material evidence you considered, and whether the monument was found or placed.

1836 (JULY) BURNHAM EAST RANDOM BETW. 25 & 36

5238.42 INT. RANGE LINE AT STAKE  
SAME

WEST MARKED LINE BETW. 36 & 25  
NO STATIONS

2618.88 SET 1/4 SEC POST BUR OAK 14 N20W 15.18' BUR  
OAK 10 S48E 25.08'

2694.78 BUR OAK 10" IN DI.  
5238.42 TO CORNERS

1864 LOCKE VOL 1 PG 220 & #1341 FD N. BT. STAKE SET HARD  
HEAD 20X14X8 ON N VAR 8-05 2620.2 TO SE COR SEC 25,  
VAR 7-30 2647.26 TO GEN SEC 25, VAR 7-15 2647.26 FROM  
GEN SEC 25 TO N 1/4 COR SEC 25

1867 LOCKE VOL 1 PG 297 & 1482 FD N.B.T. & STONE SET BY SELF  
(SEE SEC 25), VAR 7-15 2655.84 TO GEN SEC 36,

1947 SUNNY #1478 CALLS FOR COR BUT STATES NOTHING ABOUT  
MON. 2628.X TO NE COR SEC 36, 2655.8X TO CENTER OF  
SEC 36 (SET IRON PIPE FOR SURROUNDED BY 4 HH), 5304.7X  
TO S 1/4 COR SEC 36

1966 BATTERMAN FIELD BOOK #135 PG 21. SHOWS 8" STONE  
CALLS FOR PK TIES OF 6.00' TO THE SE & SW OF FD STONE.

1966 BATTERMAN VOL 4 PG 276 FD LARGE HH ON END 20X14X8  
REF. SAME. ON LINE N/S FENCE ON NORTH SIDE OF RD.

1972 SHARKEY CSM VOL 2 PG 209 STATES NOTHING ABOUT MON.  
FIELD NOTES CALLS FOR 1315.62 FROM 1/16<sup>TH</sup> COR TO S 1/4  
COR SEC 25. LEGEND CALLS FOR SETTING OF PIN @ N 1/4 COR  
SEC 36

1974 SCHROEDER CSM VOL 4 PG 192 STATES NOTHING ABOUT  
MON. 199.50 WESTERLY ALONG SEC LINE TO SE COR OF LOT

1994 SCHROEDER CSM VOL 17 PG 289 STATES NOTHING ABOUT  
MON. WESTERLY 190.00' TO NE COR OF LOT 1

1994 SCHROEDER CSM VOL 17 PG 344 STATES NOTHING ABOUT  
MON. SE COR OF LOT 1 IS 33.00 NORTH OF S 1/4 COR SEC 25.  
ANGLE 90-37-32 @ S 1/4 COR SEC 25 FROM SW COR SEC 25 TO  
CENTER OF SEC 25. 199.50 WEST ALONG SECTION LINE TO SW  
LOT COR

FD R/R SPIKE 0.4' DEEP AND FD PK 0.2' DEEP & 6.00' SW OF FD R/R  
SPIKE. THE SPIKE IS ON LINE WITH THE FD PKs FOR THE CSMs TO  
THE WEST & AT THE DISTANCE SHARKEY CALLED FOR IN 1972.  
REPLACED FD R/R SPIKE WITH POLY MON. 24" DEEP FOUND OLD  
ASPHALT PIECES OF ROAD FROM OLD DIG. THE FD RECORD TIES  
ARE NOT IN HARMONY WITH THE R/R SPIKE. THE RECORD TIE  
DISTANCES TO THE SW AND SE REFERENCE PIPES ARE THE SAME  
WHICH MIGHT INDICATE ONE OF THEM IS IN ERROR.

C) Was the corner restored through acceptance of (1) an obliterated evidence location, or, (2) a found  
perpetuated location?

ACCEPTED FD R/R SPIKE.

I, **Donald Barnes**, hereby certify that the corner location as identified by the corner code index  
was determined by me under my direction and control and that this U.S. Public Land Survey  
Monument Record is correct and complete to the best of my knowledge and belief.

Seal

SHEET OF

Emboss

*Donald Barnes*  
OCT 13, 2004

CORNER CODE

**V-23**

A.E. 7.08 REQUIREMENT

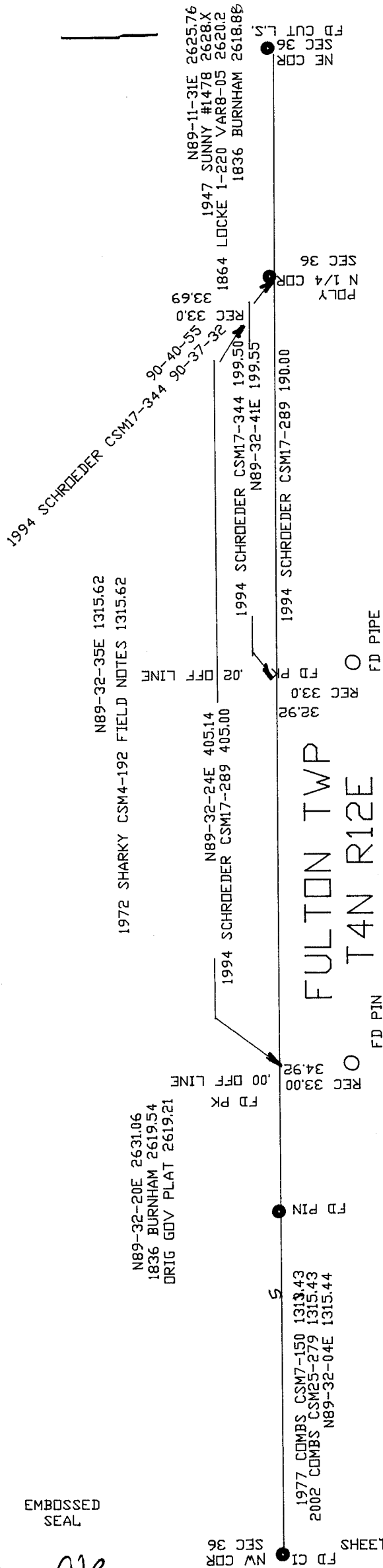
*Donald Barnes*  
OCT 13 2004

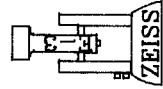
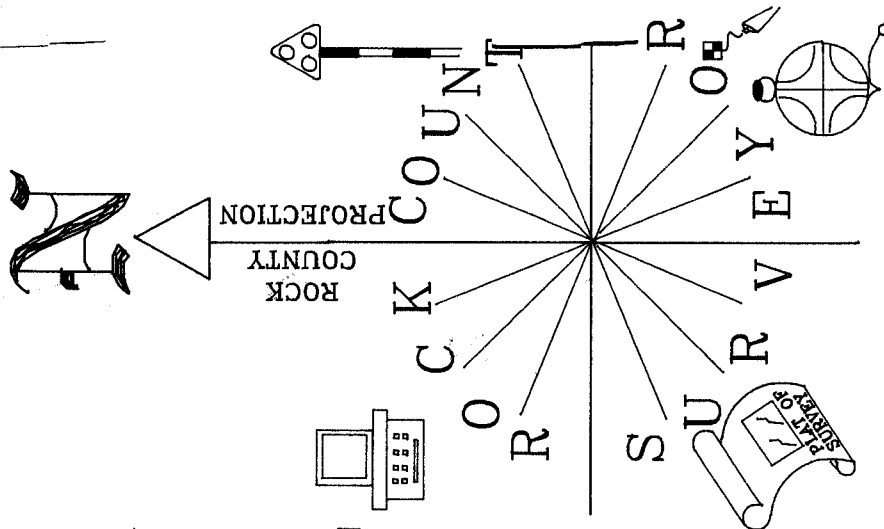
EMBOSSED  
SEAL

FD CI  
NW CDR  
SEC 36

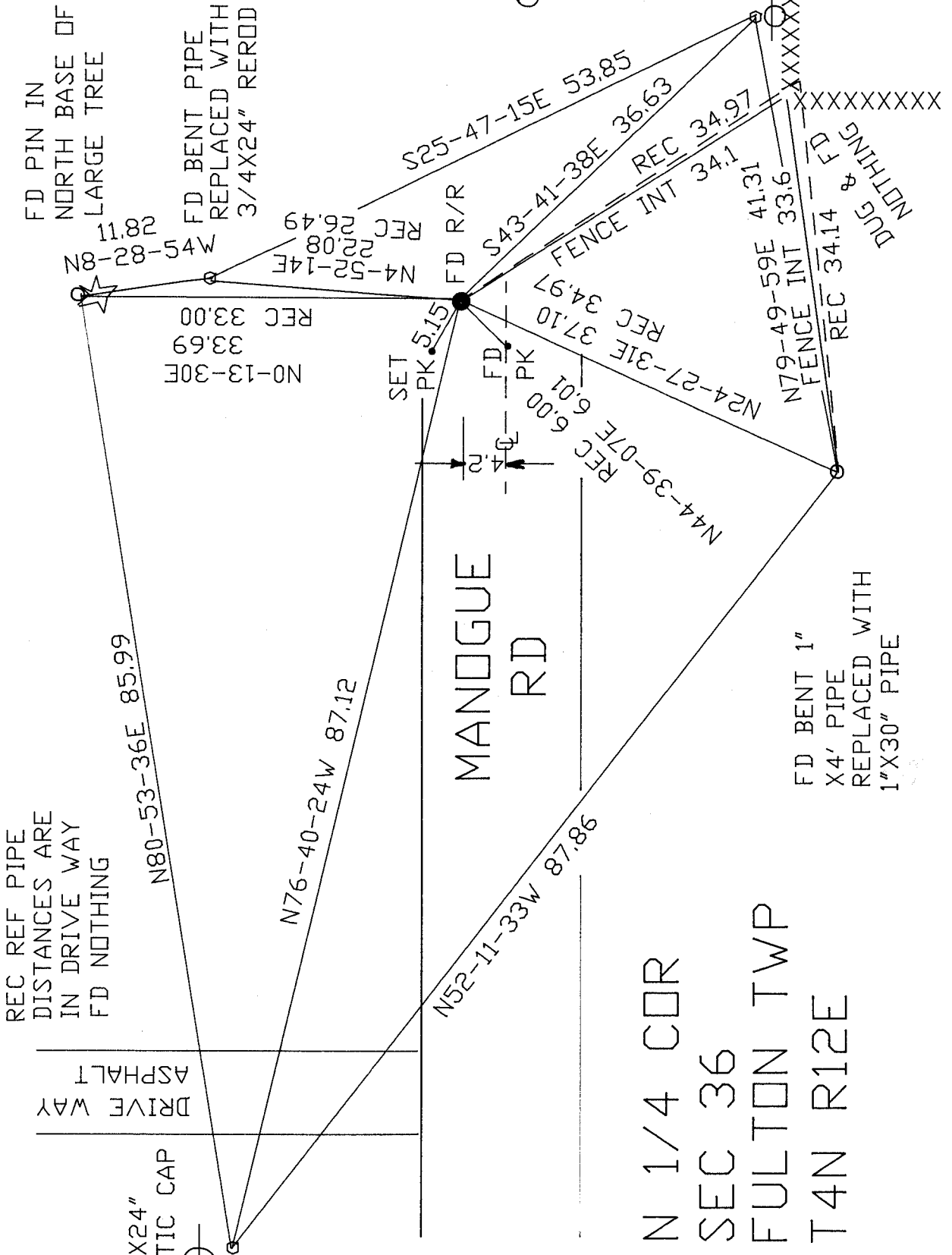
FD OF  
TEETH

V-23





NOT TO SCALE  
OBSERVATION SHEETS  
● PLACED POLY MON  
○ PLACED 3/4X24" REROD



REC REF PIPE  
DISTANCES ARE  
IN DRIVE WAY  
FD NOTHING

FD BENT 1"  
X4' PIPE  
REPLACED WITH  
1"X30" PIPE

N 1/4 COR  
SEC 36  
FULTON TWP  
T4N R12E

SHEET 2 OF 3

*Anders Baures*  
EMBOSSSED  
SEAL

05 13 2004

V - 23