

# U.S. PUBLIC LAND SURVEY MONUMENT RECORD

For Public Land Survey Corners in the

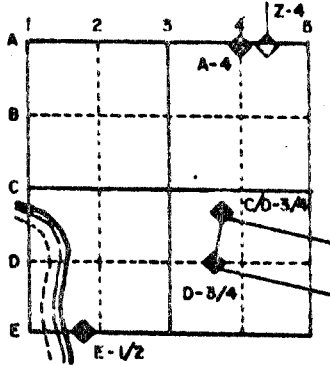
T. \_\_\_ N., R. \_\_\_ E.

## CORNER CODE INDEX

	1	2	3	4	5	6	7	8	9	10	11	12	13	14	15	16	17	18	19	20	21	22	23	24	25
A																									
B																									
C	6																								
D																									
E																									
F																									
G																									
H	7																								
I																									
J																									
K																									
L	18																								
M																									
N																									
O																									
P	19																								
Q																									
R																									
S																									
T	30																								
U																									
V																									
W																									
X	31																								
Y																									
Z																									

PLACE MONUMENT SYMBOL (◆) AT PROPER LOCATION ON ABOVE INDEX

### EXAMPLE



\_\_\_\_\_ TWP  
ROCK COUNTY WY

IF AVAILABLE  
STATE PLANE COORDINATES

North (Y) \_\_\_\_\_ Eleve. (Z) \_\_\_\_\_  
 East (X) \_\_\_\_\_ Zone \_\_\_\_\_  
 Hor. Datum \_\_\_\_\_ Vert. Datum \_\_\_\_\_

(c.)

◆ CORNER MONUMENT

○ WITNESS MONUMENT

BEARINGS ARE BASED ON:

MICROFILMED

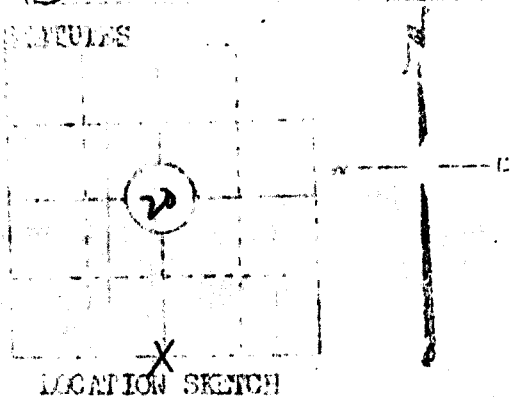
SHEET \_\_\_ OF \_\_\_

CORNER CODE:

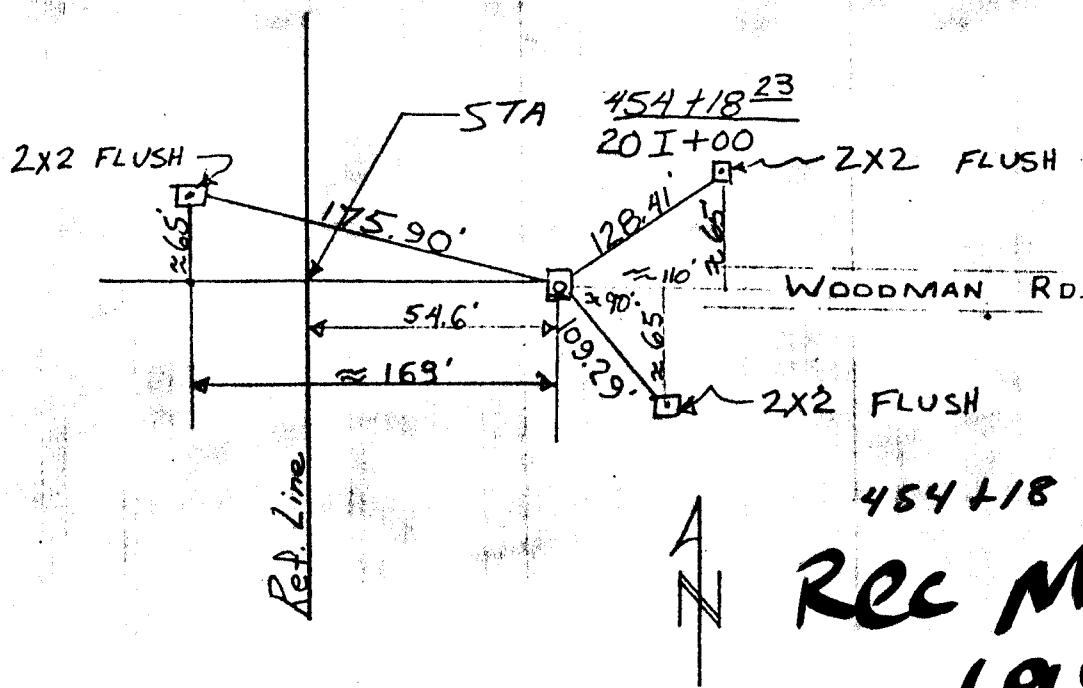
PRESENTATION OF FINDINGS

3

ITEM: Rock  
 LOCATION: LAPRAIRIE  
 PROJECT: Woodman Road  
 DISTRICT NO: 20, S 1/4 Corner  
 DATE: 2-13  
 TYPE OF WORK: 5" x 5" Limestone Rock  
 LOCATION INDICATED IN SKETCH: X



After very extensive field search, a limestone rock, as described above was found approximately 1 1/2 feet below surface of asphalt.



454+18  
**REC May 6**  
**1985**

This space for copy of field notes or ties to the above described landmark

Field notes or records filed in book no. NOTES pp 4

date

JANESVILLE

Rock

T.H. RICHARD

7-3-58

EGH

R7