

# U.S. PUBLIC LAND SURVEY MONUMENT RECORD

For Public Land Survey Corners in the

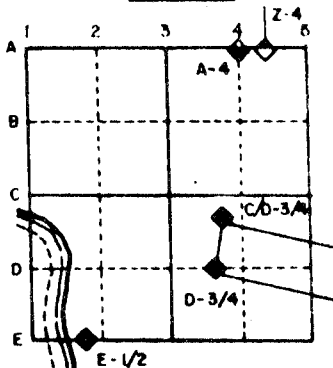
T. 2 N., R. 11 E

## CORNER CODE INDEX

	1	2	3	4	5	6	7	8	9	10	11	12	13	14	15	16	17	18	19	20	21	22	23	24	25
A																									
B																									
C	6																								
D																									
E																									
F																									
G	7																								
H																									
J																									
K																									
L	18																								
M																									
N																									
O																									
P	19																								
Q																									
R																									
S																									
T	30																								
U																									
V																									
W																									
X	31																								
Y																									
Z																									

PLACE MONUMENT SYMBOL (◆) AT PROPER LOCATION ON ABOVE INDEX

### EXAMPLE



PLYMOUTH TWP  
ROCK COUNTY WI

IF AVAILABLE  
STATE PLANE COORDINATES

North (Y) \_\_\_\_\_ Eleve. (Z) \_\_\_\_\_  
 East (X) \_\_\_\_\_ Zone \_\_\_\_\_  
 Hor. Datum \_\_\_\_\_ Vert. Datum \_\_\_\_\_

(a) ◆ CORNER MONUMENT

○ WITNESS MONUMENT

BEARINGS ARE BASED ON:

FIELD BOOK \_\_\_\_\_ PAGE # \_\_\_\_\_

SHOW A PLAN VIEW DRAWING DEPICTING THE CORNER MONUMENT AND SURROUNDING PHYSICAL FEATURES, INCLUDING THE EXCAVATION AREA AND DEPTH. THE CORNER MONUMENT SHALL HAVE THE FOLLOWING CHARACTERISTICS: 1) HAVE AT LEAST TWO PREDETERMINED BREAK-OFF POINTS. 2) IF BROKEN, LEAVE A PERMANENTLY MAGNETIZED REMNANT AT THE ORIGINAL POINT. 3) MUST BE EXTENDABLE. 4) THE CAP IS INSCRIBED: ROCK COUNTY SURVEY MONUMENT - PENALTY FOR DISTURBING MARKER. 5) OR AN EXISTING CUT LIMESTONE. AN IRON PIPE 1 1/2" x 4'0" (MINIMUM) MAY BE USED IN AREAS WHERE GROUND WATER IS WITHIN ONE FOOT OF THE SURFACE. IF THE CORNER IS OCCUPIED BY AN IMPROVEMENT (MANHOLE, BURIED CABLE, ETC.) ANY DURABLE, DISTINCT MONUMENT MAY BE USED. CORNERS SHALL BE REFERENCED WITH AT LEAST 4 DURABLE WITNESS MONUMENTS. WITNESS MONUMENTS SHALL BE MADE OF CONCRETE, NATURAL STONE, IRON OR OTHER EQUALLY DURABLE MATERIAL, EXCEPT WOOD. DESCRIBE THE CORNER AND THE WITNESS MONUMENTS.

CORNER CODE: 10F2  
C 9

(b.) Describe any record evidence, monument evidence, occupational evidence, testimonial evidence or any other material evidence you considered, and whether the monument was found or placed.

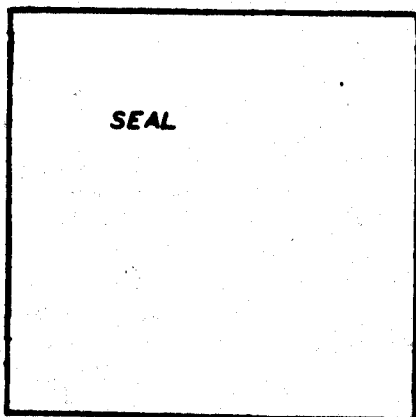
- ✓1866 LOCKE VOL 1 PG 277 FOUND CORNER SET BY SELF (SEE SEC. 5) USED TO SUBDIVIDE SECTION 4.
- ✓1868 LOCKE REMONUMENTATION FIELD NOTES. INTERSECTED 1/4 LINE AT CORNER. FOUND CORNER AS SET BY SELF (SEE COUNTY SURVEYORS RECORD) 1 FOOT EAST OF N AND S FENCE AND 5.94 FEET SOUTH OF E AND W FENCE. PLACED CUT LIMESTONE.
- ✓1966 BATTERMAN JR. VOL 4 PG 255 SHOWS STONE IN MONUMENT BOX WITH ANGLE AND DISTANCE TO THE NE CORNER AND CENTER OF SECTION 5.

(c.) Was the corner restored through acceptance of (1) an obliterated evidence location, or, (2) a found perpetuated location?

(d.) Describe any material discrepancy between the location of the corner as restored or reestablished and the location of that corner as previously restored or reestablished by distance and direction. Show the discrepancy on the plan view drawing under (c), above. Show the distances between the corner as previously restored or reestablished and (1) the corner as restored or reestablished, and (2) to at least 4 of the witness monuments shown on the drawing in (c), above.

(e.) Was the corner reestablished through lost corner proportionate methods? If so, show the method, including the directions and distances to other public land survey corners used as evidence or used for proportioning in determining the corner location.

I, \_\_\_\_\_, hereby certify that the corner points as identified by the corner code index were, in a field survey on \_\_\_\_\_, established, re-established, monumented, re-monumented, recovered or restored as expressed below and in conformance with the regulations and rules as required in the current manual of survey instructions of the United States Department of Interior, Bureau of Land Management.



COUNTY SURVEYOR FILING DATA

Date of Computer Entry \_\_\_\_\_

Date Received \_\_\_\_\_

Date Microfilmed \_\_\_\_\_

Treasurer's Receipt No. \_\_\_\_\_

Number of Included Sheets \_\_\_\_\_

AFFIX YOUR LAND SURVEYOR SEAL.

CORNER CODE C 9

PUBLIC LAND SURVEY MONUMENT RECORD

For Public Land Survey Corners in the

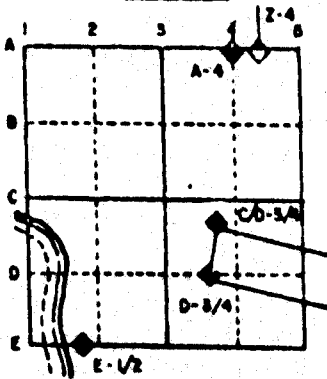
T. 2 N., R. 11 E.

CORNER CODE INDEX

	1	2	3	4	5	6	7	8	9	10	11	12	13	14	15	16	17	18	19	20	21	22	23	24	25
A																									
B																									
C																									
D																									
E																									
F																									
G																									
H																									
I																									
J																									
K																									
L																									
M																									
N																									
O																									
P																									
Q																									
R																									
S																									
T																									
U																									
V																									
W																									
X																									
Y																									
Z																									

PLACE MONUMENT SYMBOL (◆) AT PROPER LOCATION ON ABOVE INDEX

EXAMPLE



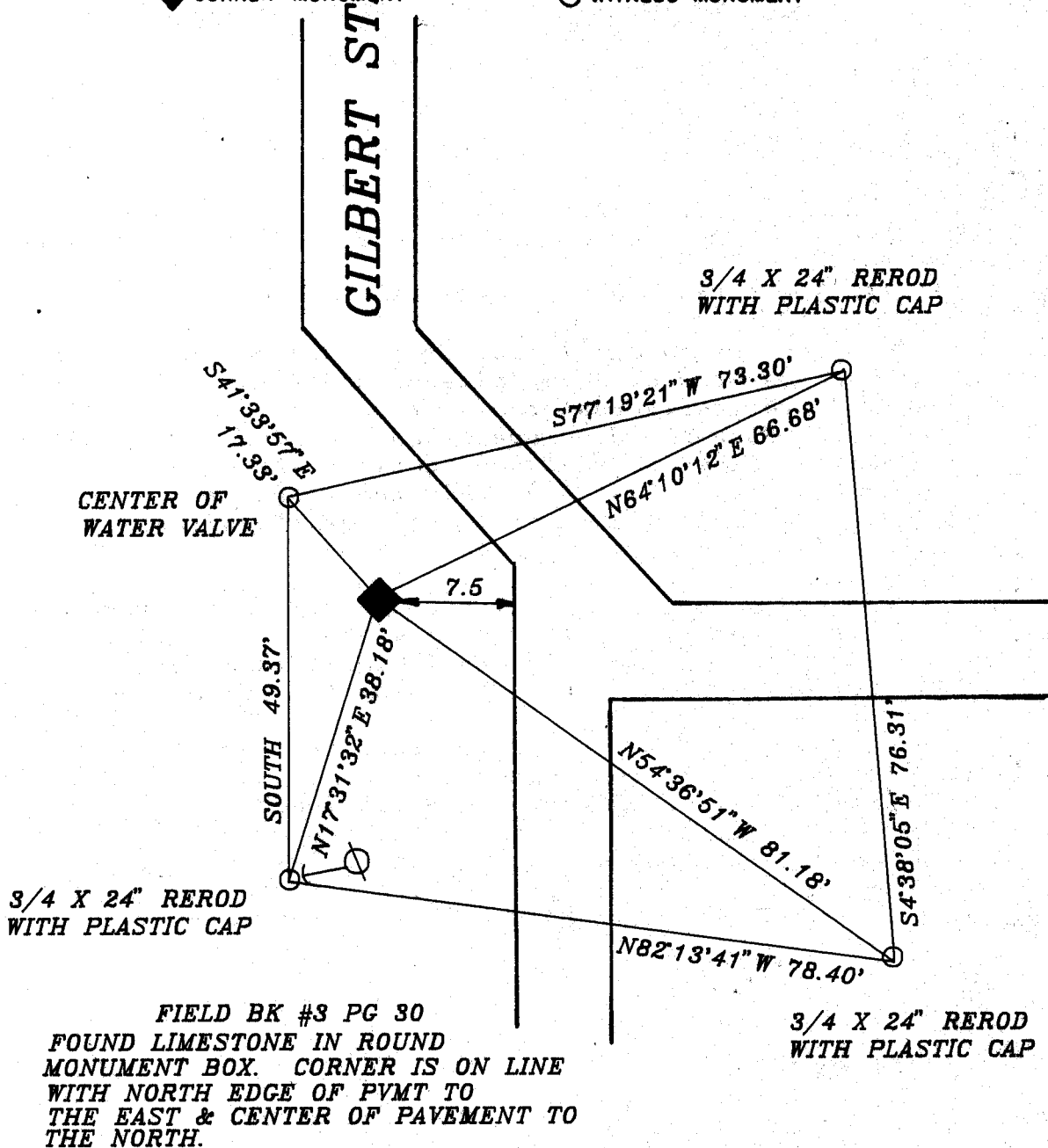
PLYMOUTH TWP  
ROCK COUNTY WI

IF AVAILABLE  
STATE PLANE COORDINATES

North (Y) \_\_\_\_\_ Elev. (Z) \_\_\_\_\_  
 East (X) \_\_\_\_\_ Zone \_\_\_\_\_  
 Hor. Datum \_\_\_\_\_ Vert. Datum \_\_\_\_\_

◆ CORNER MONUMENT      ○ WITNESS MONUMENT

BEARINGS ARE BASED ON: ASSUMED



3/4 X 24" REROD WITH PLASTIC CAP

FIELD BK #3 PG 30  
 FOUND LIMESTONE IN ROUND  
 MONUMENT BOX. CORNER IS ON LINE  
 WITH NORTH EDGE OF PVMT TO  
 THE EAST & CENTER OF PAVEMENT TO  
 THE NORTH.

3/4 X 24" REROD WITH PLASTIC CAP

MICROFILMED

SHEET 2 OF 2

CORNER CODE: C 9

- (B) Describe any record evidence, monument evidence, occupational evidence, testimonial evidence or any other material evidence you considered, and whether the monument was found or placed.
- 1865 LOCKE VOL 1 PG 230 FOUND OLD STAKE SET POPLAR WITH LS 20X12X8 ON NORTH, LS 20X6X4 ON SOUTH AND SMALLER ONE ON W IN MOUND.
  - 1866 LOCKE VOL 1 PG 277 FOUND CORNER SET BY SELF. 2665.74 TO CENTER OF SECTION 4.
  - 1867 LOCKE VOL 1 PG 280 FOUND CORNER AS SET BY SELF SECTION 4. USED TO SUBDIVIDE SECTION 5. 2664.42 TO CENTER OF SECTION 5 AND 2597.1 TO SE CORNER OF SECTION 5.
  - 1868 LOCKE VOL 1 PG 317 FOUND CORNER AS SET BY SELF USED TO SUBDIVIDE SECTION 4.
  - 1868 LOCKE REMONUMENTATION NORTH ON EAST LINE OF SECTION 5. AT 2601.06 FOUND CORNER AS SET BY SELF. 1 EAST OF N/S FENCE AND 5.94' SOUTH OF E/W FENCE. PLACED CUT LIMESTONE. 2557.83 TO NE CORNER OF SECTION 5.
  - 1913 VOL 6 PG 386 OWEN CALLS FOR THE FOLLOWING:
    - 2667.7 TO CENTER OF SECTION 5
    - 2671.3 TO CENTER OF SECTION 4
    - 2559.7 TO NE CORNER OF SECTION 5
    - 87-52 ANGLE FROM CENTER OF 5 TO THE NE CORNER OF SECTION 5
  - 1966 BATTERMAN JR. VOL 4 PG 255 CALLS FOR STONE IN MONUMENT BOX AND SHOWS THE FOLLOWING:
    - 2558.26 TO NE CORNER OF SECTION 5
    - 2668.7 TO CENTER OF SECTION 5
    - 88-13-45 ANGLE FROM CENTER OF SECTION 5 TO NE CORNER OF SECTION 5.

FOUND CUT LIMESTONE IN ROUND MONUMENT BOX.

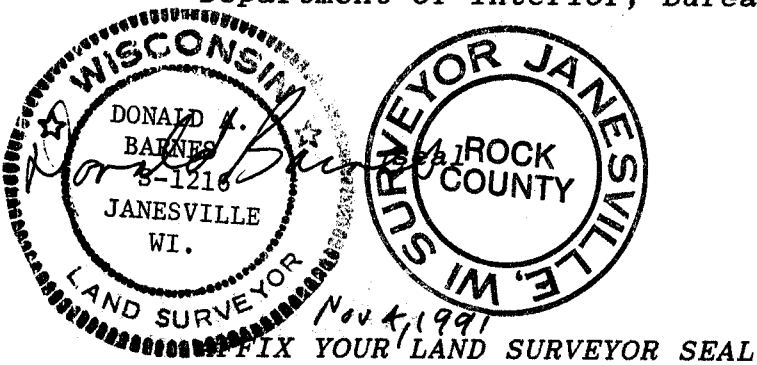
C) Was the corner restored through acceptance of (1) an obliterated evidence location, or, (2) a found perpetuated location?

ACCEPTED FOUND PERPETUATED LOCATION.

D) Describe any material discrepancy between the location of the corner as restored or reestablished and the location of that corner as previously restored or reestablished by distance and direction. Show the discrepancy on the plan view drawing under (a), above. Show the distances between the corner as previously restored or reestablished and (1) the corner as restored or reestablished, and (2) to at least 4 of the witness monuments shown on the drawing in (a), above.

(E) Was the corner reestablished through lost corner proportionate methods? If so, show the method, including the directions and distances to other public land survey corners used as evidence or used for proportioning the corner location.

I, Donald Barnes, hereby certify that the corner points as identified by the corner code index were, in a field survey on, OCTOBER 9, 1991, established, re-established, monumented, re-monumented, recovered or restored as expressed below and in conformance with the regulations and rules as required in the current manual of survey instructions of the United States Department of Interior, Bureau of Land Management.



COUNTY SURVEYOR FILING DATA

Date of computer entry \_\_\_\_\_

Date microfilmed \_\_\_\_\_

Number of included sheets \_\_\_\_\_

CORNER CODE