

# U.S. PUBLIC LAND SURVEY MONUMENT RECORD

For Public Land Survey Corners in:

WI ADMINISTRATIVE CODE A-E 7.08 REQUIREMENT

T. 2 N., R. 11 E

### CORNER CODE INDEX

A	1	2	3	4	5	6	7	8	9	10	11	12	13	14	15	16	17	18	19	20	21	22	23	24	25
B																									
C	6					5					A			3							2			1	
D																									
E																									
F	7					8					9			10							11			12	
G																									
H																									
I	13					11				16			15								14			13	
J																									
K																									
L																									
M	18																								
N																									
O																									
P	19					20				21			22								23			24	
Q																									
R																									
S																									
T	30					29				28			27								26			25	
U																									
V																									
W																									
X	31					32				33			34								35			36	
Y																									
Z																									

PLYMOUTH TWP

ROCK COUNTY WI

IF AVAILABLE  
ROCK COUNTY COORDINATES PREFERRED

North \_\_\_\_\_ Elev. \_\_\_\_\_

East \_\_\_\_\_

Hor. Datum \_\_\_\_\_ Vert. Datum \_\_\_\_\_

LATITUDE \_\_\_\_\_ ELLIPS. HT. \_\_\_\_\_

LONGITUDE \_\_\_\_\_

GPS (X) \_\_\_\_\_ TRAVERSE (X) \_\_\_\_\_

BASED ON THE FOLLOWING CONTROL:

PLACE MONUMENT SYMBOL  AT PROPER LOCATION ON ABOVE INDEX

CORNER MONUMENT

WITNESS MONUMENT

(a)

BEARINGS ARE BASED ON:

OBSERVATION SHEETS 102, 503, 1623

FIELD BOOK \_\_\_\_\_ PAGE # \_\_\_\_\_

SHEET 1 OF 3

SHOW A PLAN VIEW DRAWING DEPICTING THE CORNER MONUMENT AND SURROUNDING PHYSICAL FEATURES, INCLUDING THE EXCAVATION AREA AND DEPTH.

PLANNING & ZONING COMMITTEE ADOPTED THE ABOVE FORM ON 12/2/1982

CORNER CODE A-5

PL503

(B) Describe any record evidence, monument evidence, occupational evidence, testimonial evidence or any other material evidence you considered, and whether the monument was found or placed.

- 1833 MULLETT WEST ON SOUTH SIDE SECTION 32  
2640 SET QUARTER SECTION POST IN PRAIRIE AND MADE MOUND.  
5280 SET POST CORNER SECTIONS 31 & 32 IN PRAIRIE AND MADE MOUND LAND LEVEL FIRST RATE PRAIRIE
- 1833 MULLETT WEST ON SOUTH SIDE SECTION 31  
132 SPRING O SOUTH  
792 STREAM 5.28' O SE  
2640 SET QUARTER SECTION POST IN PRAIRIE AND MADE MOUND  
3630 LEAVE PRAIRIE  
5240.4 INTERSECTED RANGE LINE AT TEMPORARY POST SET POST CORNER TOWNSHIPS 2 & 3N RANGE 10 & 11E BLACK OAK B 889 1/2 E 60.72' BLACK OAK 18 S40W 109.56' LAND ROLLING FIRST RATE MOSTLY PRAIRIE. SEPT 12<sup>TH</sup> 1833
- 1833 HARRISON NORTH BET SECS 5 & 6  
2640 QUARTER SEC COR & ENTER MARSH  
5148 BROOK 6.6' ORS S.E.  
5181 INT. N. BDY AT POST MARK. LEVEL ROLLING 2<sup>ND</sup> RATE FOR 1<sup>ST</sup> 1/4 LEVEL & WET FOR 2<sup>ND</sup> 1/4 TIMBER AS BEFORE COR TREES TO 1/4 SEC {RED O 14 S88W 304.26' RED O 18 S25W 380.82' DEC 27<sup>TH</sup> 1833
- 1867 LOCKE VOL 1 PG 306 COR LOST. SET IT MIDWAY & ON LINE BETWEEN THE 1/4 POST EAST & WEST. SET DRAB TOOTH 10" LONG IN CENTER OF DAM. VAR 6-50 2655.31 TO N 1/4 COR SEC 6 & VAR 8-00 2661.12 TO E 1/4 COR SEC 31 CENTER TWP.
- 1867 LOCKE VOL 1 PG 307 SEE SEC 31. VAR 8 2661.12 TO W 1/4 COR SEC 32 & VAR 6-50 2655.31 TO S 1/4 COR SEC 32 CENTER TWP
- 1868 LOCKE PG 55 SOUTH BETWEEN SECS 5 & 6 VAR 7-42  
92.4 NORTH BANK BASS CREEK  
105.6 SOUTH BANK BASS CREEK  
2361.48 INTERSECTED 1/4 LINE AT COR. FOUND BTS AND COR AS SET BY SELF AT JUNCTION OF WEST & SOUTH FENCES. (SEE CO. SURVEYORS RECORD) BT S88W 271.26'  
CONTINUED SOUTH WITH VAR 7-38  
3036 FOOT OF BLUFF  
5017.98 INTERSECTED SOUTH BOUNDARY 1.32' WEST OF COR. FOUND COR. AS SET BY SELF (SEE CO. SURVEYORS RECORD) AND STUMPS OF BTS IN SECS 7 & 8 COR IN ROAD VAR CORRECTED 7-40 SEPT 5<sup>TH</sup> 1868  
PG 53 WEST ON NORTH LINE SEC 6 VAR 6-53  
727.98 CREEK 6.6' WIDE ORS S.E.  
2657.82 INTERSECTED 1/4 LINE AT COR. FOUND COR. AS SET BY SELF (SEE CO. SURVEYORS RECORD) COR ON SOUTH SIDE OF HIGHWAY IN LINE WITH BOARD FENCES RUNNING N AND E AND 6 INCHES WEST OF COR POST.  
CONTINUED WEST WITH VAR 6-20  
5262.51 INTERSECTED WEST BOUNDARY 43.73' NORTH OF COR. COR LOST SET IT BY "PROPORTIONAL DISTANCES" FROM 1/4 CORNERS N, S, E, & W THAT IS 2604.69 FROM E 1/4 CORNER, 2644.29 FROM W 1/4 COR, 2649.57 FROM N 1/4 CORNER AND 2649.57 FROM S 1/4 CORNER. VAR CORRECTED 7-17' SEPT 4 1868

SHEET 1 OF 3 CORNER CODE A-5

Donald Barnes

1/15/03

PL503

PG 52 WEST ON NORTH LINE SEC 5 VAR 7-35

- 1966.14 R.R  
2699.4 INTERSECTED ¼ LINE FOR TOWN 3 20.79' SOUTH OF COR. FOUND STAKE SET BY SELF. (SEE CO S. RECORD) IN SHOULDER OF DITCH FENCE. VAR CORRECTED 7-08  
2679.6 SET ¼ COR T2 19.8' EAST OF COR. FOR T3 19.8' BEING ½ OF THE "JOG" AT SEC. CORNERS COR 3.96' N OF FENCE  
CONTINUED WEST FROM ¼ COR WITH VAR 6-53  
5357.22 INTERSECTED WEST BOUNDARY AT COR. FOUND COR. AS SET BY SELF. SEE RECORD COUNTY SURVEYOR. COR. ON DAM 3.63' WEST OF FENCE AND 14.85' N OF LAST POST OF AND IN LINE WITH FENCE RUNNING S. MARKED ¼ MONUMENT WITH FIGURE 5 ON SOUTH FACE. SEPT 4 1868  
PG 55 SOUTH BETWEEN SECS 5 & 6 VAR 7-42  
92.4 NORTH BANK BASS CREEK  
105.6 SOUTH BANK BASS CREEK  
2361.48 INTERSECTED ¼ LINE AT COR. FOUND BTS AND COR AS SET BY SELF AT JUNCTION OF WEST & SOUTH FENCES. (SEE CO. SURVEYORS RECORD) BT S88W 271.26'  
CONTINUED SOUTH WITH VAR 7-38  
3036 FOOT OF BLUFF  
5017.98 INTERSECTED SOUTH BOUNDARY 1.32' WEST OF COR. FOUND COR. AS SET BY SELF (SEE CO. SURVEYORS RECORD) AND STUMPS OF BTS IN SECS 7 & 8 COR IN ROAD VAR CORRECTED 7-40 SEPT 5<sup>TH</sup> 1868  
1979 BARNES VOL 5 PG 564 DUG & FD NOTHING. HOLE 11' WIDE, NORTH SIDE OF HOLE IS 11' NORTH OF SOUTH PVMT EDGE, SOUTH SIDE OF HOLE IS 25' SOUTH OF SOUTH PVMT EDGE, & WEST SIDE OF HOLE IS 5257' EAST OF S ¼ COR SEC 31.  
1980 BARNES VOL 6 PG 21 FD CUT L.S. 1.5' DEEP. SET BOLTS HORIZONTALLY ON SIDE OF STONE & REFERENCED SAME. ABOUT 6-8' SOUTH OF E/W FENCE ON SOUTH SIDE OF RD.  
1984 BARNES VOL 6 PG 317 FD CUT L.S. S89-56-50W 2658.99 TO N ¼ COR SEC 6 & N0-57-08W 2663.00 TO E ¼ COR SEC 31 CENTER TWP.  
1984 BARNES VOL 6 PG 319 BATTERMAN DEPOSITED LARGE REMONUMENTATION FIELD BOOKS.  
1999 KREBS MAP #07568 FD CUT STONE MON & TIES. 2677.77 TO N ¼ COR SEC 5, 2363.60 TO W ¼ COR SEC 5, & ANGLE 89-22-00 @ NW COR SEC 5 FROM N ¼ COR TO W ¼ COR SEC 5.

FOUND CUT LIMESTONE 1.5' BELOW GRADE SOUTH OF E/W FENCE ON SOUTH SIDE OF RD. PLACED MAGNETS & RESET CARSONITE POST NEXT TO L.S. REFERENCES COR. REFERENCED MONUMENT.

C) Was the corner restored through acceptance of (1) an obliterated evidence location, or, (2) a found perpetuated location?

ACCEPTED FD CUT L.S.

I, Donald Barnes, hereby certify that the corner location as identified by the corner code index was determined by me under my direction and control and that this U.S. Public Land Survey Monument Record is correct and complete to the best of my knowledge and belief.

Seal

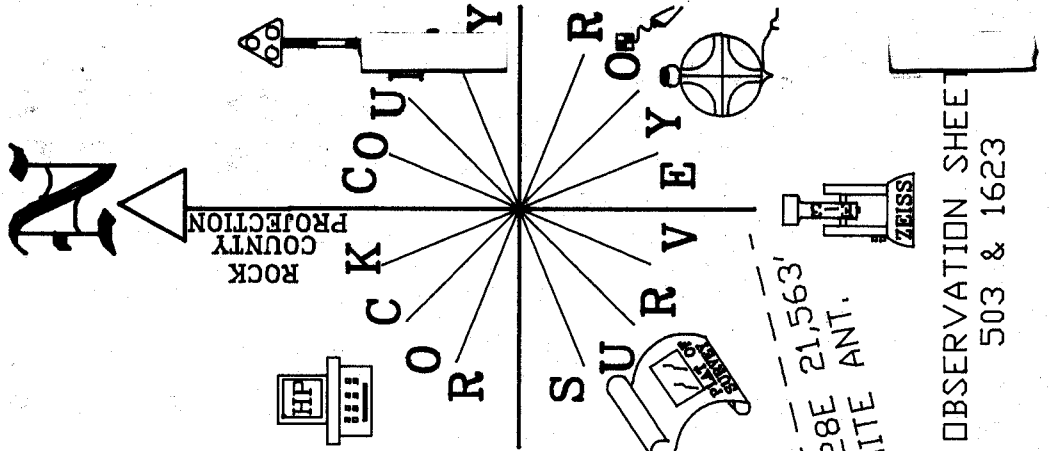
SHEET 2 OF 3

Embloss  
Donald Barnes

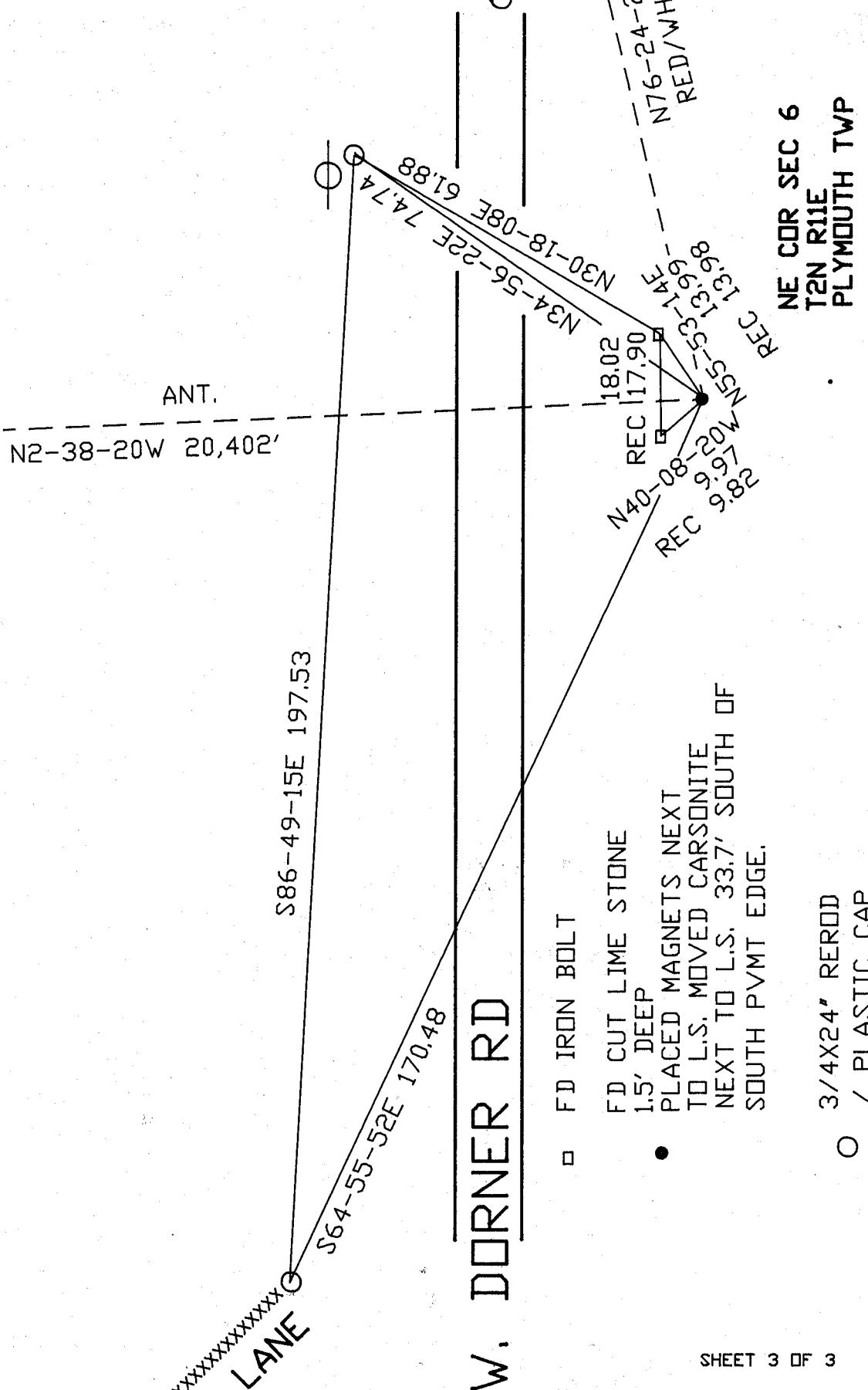
CORNER CODE A-5

A-E 7.08 REQUIREMENT

1/15/03



OBSERVATION SHEET  
503 & 1623



XXXXXXXXXXXXXXXXXXXX  
FARM LANE

W. DORNER RD

EMBOSSED SEAL

*Donald Barnes*

1-15-03

SHEET 3 OF 3

