

U.S. PUBLIC LAND SURVEY MONUMENT RECORD

For Public Land Survey Corners in:

WI ADMINISTRATIVE CODE A-E 7.08 REQUIREMENT

T. 2N., R. 11E

CORNER CODE INDEX

A	2	3	4	5	6	7	8	9	10	11	12	13	14	15	16	17	18	19	20	21	22	23	24	25
B	6																							
C																								
D																								
E																								
F																								
G	1																							
H																								
I																								
J																								
K																								
L	18	17	16	15	14	13																		
M																								
N																								
O																								
P	19	20	21	22	23	24																		
Q																								
R																								
S	30	29	28	27	26	25																		
T																								
U																								
V																								
W																								
X	31	32	33	34	35	36																		
Y																								
Z																								

PLYMOUTH TWP
ROCK COUNTY WI

IF AVAILABLE
ROCK COUNTY COORDINATES PREFERRED

North _____ Elev. _____

East _____

Hor. Datum _____ Vert. Datum _____

LATITUDE _____ ELLIPS. HT. _____

LONGITUDE _____

GPS (X) _____ TRAVERSE (X) _____

BASED ON THE FOLLOWING CONTROL:

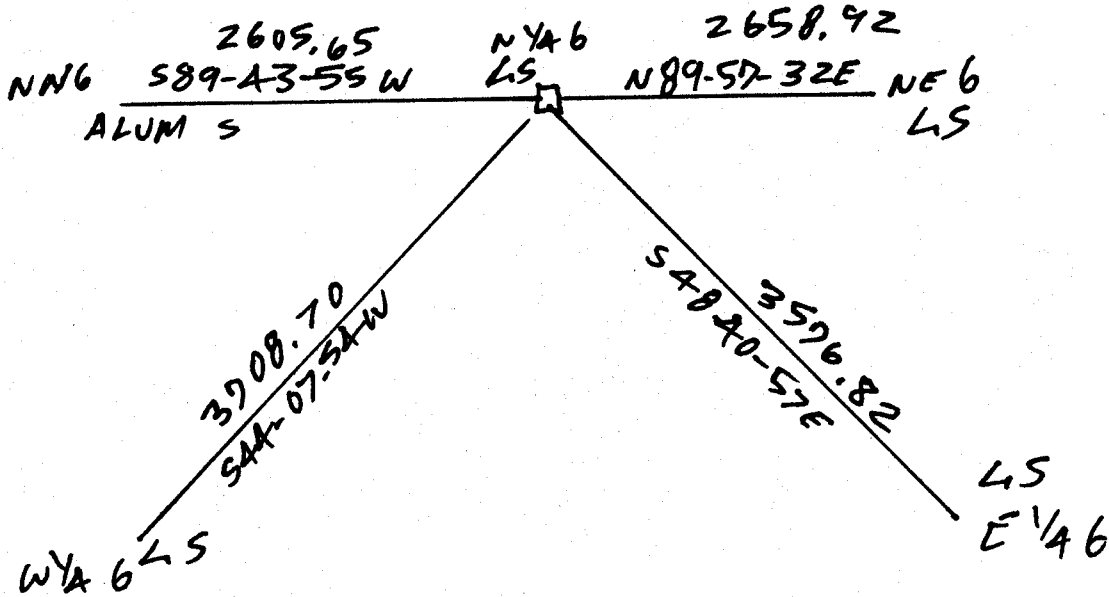
PLACE MONUMENT SYMBOL \blacklozenge AT PROPER LOCATION ON ABOVE INDEX

\blacklozenge CORNER MONUMENT

\circ WITNESS MONUMENT

(a)

BEARINGS ARE BASED ON:



OBSERVATION SHEETS 103, 405, 515

FIELD BOOK _____ PAGE # _____

SHEET 1 OF 1

SHOW A PLAN VIEW DRAWING DEPICTING THE CORNER MONUMENT AND SURROUNDING PHYSICAL FEATURES, INCLUDING THE EXCAVATION AREA AND DEPTH.

PLANNING & ZONING COMMITTEE ADOPTED THE ABOVE FORM ON 12/2/1982

CORNER CODE A-3

PL502

(B) Describe any record evidence, monument evidence, occupational evidence, testimonial evidence or any other material evidence you considered, and whether the monument was found or placed.

- 1833 MULLETT WEST ON SOUTH SIDE SECTION 31
132 SPRING C SOUTH
792 STREAM 5.28' C SE
2640 SET QUARTER SECTION POST IN PRAIRIE AND MADE MOUND
3630 LEAVE PRAIRIE
5240.4 INTERSECTED RANGE LINE AT TEMPORARY POST SET POST CORNER TOWNSHIPS 2 & 3N RANGE 10 & 11E BLACK OAK 8 S89 1/2E 60.72' BLACK OAK 18 S40W 109.56' LAND ROLLING FIRST RATE MOSTLY PRAIRIE. SEPT 12TH 1833
- 1867 LOCKE VOL 1 PG 293 FD STAKE & STONE ON CORNER. SET W.O. STAKE WITH L.S. ON E & W. 2508 VAR 8-0 TO CENTER SEC 6
- 1867 LOCKE VOL 1 PG 306 & LOCKE MAP#04326 2655.31 VAR 6-05 TO SE COR SEC 31 CENTER TWP (NE COR SEC 6). FD COR. AS SET BY SLEF. SEE SEC 6 PLY.
- 1868 LOCKE PG 53 WEST ON NORTH LINE SEC 6 VAR 6-53
727.98 CREEK 6.6' WIDE CRS S.E.
2657.82 INTERSECTED 1/4 LINE AT COR. FOUND COR. AS SET BY SELF (SEE CO. SURVEYORS RECORD) COR ON SOUTH SIDE OF HIGHWAY IN LINE WITH BOARD FENCES RUNNING N AND E AND 6 INCHES WEST OF COR POST.
CONTINUED WEST WITH VAR 6-20
5262.51 INTERSECTED WEST BOUNDARY 43.73' NORTH OF COR. COR LOST SET IT BY "PROPORTIONAL DISTANCES" FROM 1/4 CORNERS N,S,E,& W THAT IS 2604.69 FROM E 1/4 CORNER, 2644.29 FROM W 1/4 COR, 2649.57 FROM N 1/4 CORNER AND 2649.57 FROM S 1/4 CORNER. VAR CORRECTED 7-17' SEPT 4 1868
- 1979 BARNES VOL 5 PG 564 FD CUT L.S. AT FENCE T-INTERSECTION ON SOUTH SIDE OF RD.
- 1984 BARNES VOL 6 PG 317 FD L.S. S89-42-41W 2605.69 TO NW COR SEC 6 & N89-56-50E 2658.99 TO NE COR SEC 6.
- 1988 COMBS CSM13-339 CUT L.S. 2605.71 TO NW COR SEC 6
- 1994 COMBS MAP#09878 ANGLE OF 89-44-35 @ NW COR SEC 6 FROM N 1/4 COR SEC 6 TO W 1/4 COR SEC 6.
- 1996 COMBS CSM19-418 FD CUT L.S. 2605.58 TO NW COR SEC 6
- 2000 LATHROP CSM 23-145 FD CUT L.S.

FD CUT LIMESTONE ON SOUTH SIDE OF ROAD. SET CARSONITE POST NEXT TO MONUMENT.

C) Was the corner restored through acceptance of (1) an obliterated evidence location, or, (2) a found perpetuated location?

ACCEPTED FOUND CUT LIMESTONE ON SOUTH SIDE OF ROAD

D) Describe any material discrepancy between the location of the corner as restored or reestablished and the location of that corner as previously restored or reestablished by distance and direction. Show the discrepancy on the plan view drawing under (a), above. Show the distances between the corner as previously restored or reestablished and (1) the corner as restored or reestablished, and (2) to at least 4 of the witness monuments shown on the drawing in (a), above. NONE

I, Donald Barnes, hereby certify that the corner location as identified by the corner code index was determined by me under my direction and control and that this U.S. Public Land Survey Monument Record is correct and complete to the best of my knowledge and belief.

Seal
Donald Barnes
Emboss

3-07-03

SHEET 1 OF 1

CORNER CODE A-3

A.E. 7.08 REQUIREMENT