

U.S. PUBLIC LAND SURVEY MONUMENT RECORD

For Public Land Survey Corners in:

WI ADMINISTRATIVE CODE A-E 7.08 REQUIREMENT

T. 2 N., R. 11 E

CORNER CODE INDEX

A	1	2	3	4	5	6	7	8	9	10	11	12	13	14	15	16	17	18	19	20	21	22	23	24	25	
B																										
C	6																									
D																										
E																										
F																										
G	1																									
H																										
I																										
J																										
K																										
L	18																									
M																										
N																										
O																										
P	19																									
Q																										
R		20																								
S																										
T																										
U																										
V																										
W																										
X																										
Y																										
Z																										

PLYMOUTH TWP
ROCK COUNTY WI

IF AVAILABLE
ROCK COUNTY COORDINATES PREFERRED

North _____ Elev. _____

East _____

Hor. Datum _____ Vert. Datum _____

LATITUDE _____ ELLIPS. HT. _____

LONGITUDE _____

GPS (X) _____ TRAVERSE (X) _____

BASED ON THE FOLLOWING CONTROL:

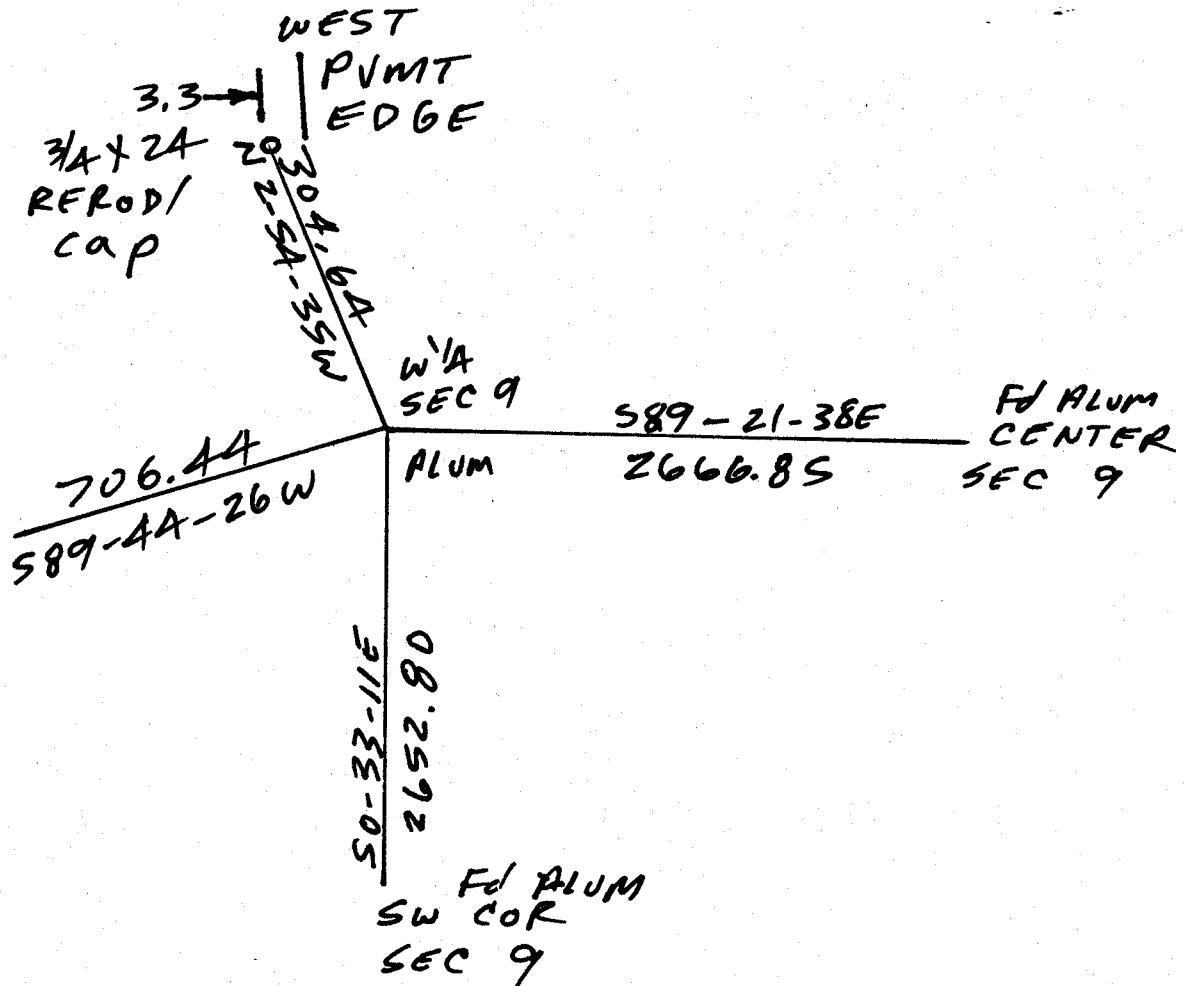
PLACE MONUMENT SYMBOL  AT PROPER LOCATION ON ABOVE INDEX

 CORNER MONUMENT

 WITNESS MONUMENT

(a)

BEARINGS ARE BASED ON:



OBSERVATION SHEETS 266, 909, 4536, 9707

FIELD BOOK _____ PAGE # _____

SHEET 1 OF 2

SHOW A PLAN VIEW DRAWING DEPICTING THE CORNER MONUMENT AND SURROUNDING PHYSICAL FEATURES, INCLUDING THE EXCAVATION AREA AND DEPTH.

PLANNING & ZONING COMMITTEE ADOPTED THE ABOVE FORM ON 12/2/1982

CORNER CODE G-9

PL536

(B) Describe any record evidence, monument evidence, occupational evidence, testimonial evidence or any other material evidence you considered, and whether the monument was found or placed.

1833 HARRISON NORTH BET. SECS 8 & 9

361.02 W.O 24

2640 QUARTER SEC COR. {BURR O 16 S61E 55.44' BURR O 19 S80W 44.22' BURR O 16 BURR O 19} MARKED

4620 LEFT TIMBER & ENTERED MARSH

5280 COR TO SECS 4 5 8 9 {RED O. 16 S32W 502.92' LAND ROLLING 2ND RATE WITH ? RED & W.O. TIMBER ? & GRASS

1858 CHURCH VOL 1 PG 76 STATES NOTHING ABOUT MONUMENT. VAR 5 2649.24 TO CENTER OF SEC 8 & 5298.81 TO W ¼ COR SEC 8.

1866 LOCKE VOL 1 PG 278 & MAP #4335 FD STUMPS OF B.T.S & OLD STAKE SET STAKE SURROUNDED BY 3 LIMESTONES. 2666.89 TO CENTER OF SEC 9, 5333.78 TO E ¼ COR SEC 9, & 2653.20 TO NW COR SEC 9

1868 LOCKE PG 57 SOUTH BETWEEN SECS 8 AND 9 VAR 6-45 2656.83 INTERSECTED ¼ LINE .33' WEST OF COR. FOUND STUMPS OF BTS AND COR AS SET BY SELF. (SEE CO S. RECORD) COR. IN LINE OF FENCE RUNNING SOUTH.

CONTINUED SOUTH FROM ¼ COR WITH VAR 7-30

3983.1 1/16 COR SET BY SELF (SEE CO S RECORD)

5309.37 INTERSECTED SOUTH BOUNDARY AT COR. FOUND BTS IN SECS 9 AND 16 AND STUMPS OF BTS IN SECS 8 AND 17 AND STAKE. COR IS EAST PAST OF A "PAIR OF BURRS" IN E AND W FENCE.

1868 LOCKE VOL 1 PG 320 FD COR AS SET BY SELF. VAR 7-36 2651.88 TO SW COR SEC 9, VAR 6-15 2671.02 TO CENTER OF SEC 9, & VAR 5-35 2671.02 FROM CENTER SEC 9 TO E ¼ COR SEC 9.

1869 RUGER VOL 2 PG 10 FD STONE MON BY LOCKE. VAR 5-42 2638.68 TO CENTER SEC 8

1869 TWP RD REC BK 2 PG 6 BEGINNING AT THE ¼ ON THE EAST LINE OF SEC 9; THENCE RUNNING WEST ON THE ¼ LINE TO THE ¼ POST ON THE WEST LINE OF SAID SEC 9; THENCE WEST ON THE ¼ LINE OF SEC 8 TO THE CENTER OF SAID SEC 8 TO INTERSECT A RD RUNNING NORTH & SOUTH ON THE SAID SEC 8, AND THE SAME IS HEREBY ESTABLISHED 66' IN WIDTH.

1974 LEE VOL 5 PG 11 FD NOTHING SET ALUM MON BY PRORATION FROM W, N, & E SET TIES 2666.85 TO CENTER OF SEC 9. CENTER OF SEC 9 SET BY PRORATION FROM W, S, & E. 2666.85 TO E ¼ COR SEC 9.

1978 BARNES VOL 5 PG 501 N88-51-04W 2649.81 TO CENTER SEC 8, S89-21-55E 2666.85 TO CENTER SEC 9, S0-33-14E 2652.80 TO SW COR SEC 9, CENTER SEC 8 TO W ¼ COR SEC 8 N88-32-56W 2655.93, & SE COR SEC 8 TO E ¼ COR SEC 17 S0-29-12E 2656.44.

1978 BARNES VOL 5 PG 502 SET ALUM. MON FROM TIES. CENTER SEC 8 SET 18" ALUM ON TOP OF STONE OF RECORD

1993 KARNES CSM16-478 REBAR? 5305.91 TO W ¼ COR SEC 8

1998 COMBS CSM 21-416 ALUM MON. 2652.92 TO SE COR SEC 8 AN ALUM.

1999 KREBS #9439 FD ALUM N89-28-50W 2649.80 TO CENTER SEC 8, N0-53-44W 2652.55 TO NE COR SEC 8, 5305.66 TO W ¼ COR SEC 8. BEARINGS BASED ON STATE PLANE COORDINATES FROM GPS ORFORDVILL GPS & ITS REFERENCE (N14-14-23E)

2000 BARNES VOL 6 PG 455 S89-21-44E 2666.85 TO CEN SEC 9, S0-33-14E 2652.80 TO SE COR SEC 8, N88-51-05W 2649.81 TO CEN SEC 8, 5305.74 TO W ¼ COR SEC 8.

SHEET 1 OF 2 CORNER CODE G-9

2/04/03
Donald Barnes

PL536

FD ALUM. MON.

C) Was the corner restored through acceptance of (1) an obliterated evidence location, or, (2) a found perpetuated location?

ACCEPTED FD ALUM. MON.

D) Describe any material discrepancy between the location of the corner as restored or reestablished and the location of that corner as previously restored or reestablished by distance and direction. Show the discrepancy on the plan view drawing under (a), above. Show the distances between the corner as previously restored or reestablished and (1) the corner as restored or reestablished, and (2) to at least 4 of the witness monuments shown on the drawing in (a), above.

(E) Was the corner reestablished through lost corner proportionate methods? If so, show the method, including the directions and distances to other public land survey corners used as evidence or used for proportioning the corner location.

I, Donald Barnes, hereby certify that the corner location as identified by the corner code index was determined by me under my direction and control and that this U.S. Public Land Survey Monument Record is correct and complete to the best of my knowledge and belief.

Donald

Seal

Barnes

2/04/03

EM16033

SHEET 2 OF 2

CORNER CODE

G-9

A.E. 7.08 REQUIREMENT