

U.S. PUBLIC LAND SURVEY MONUMENT RECORD

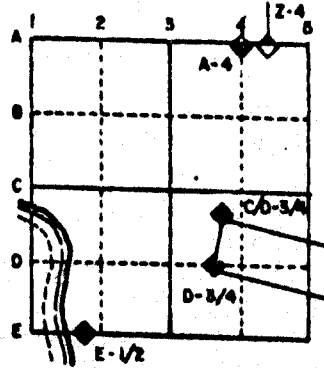
For Public Land Survey Corners in the
T. 2 N., R. 11 E.

CORNER CODE INDEX

	1	2	3	4	5	6	7	8	9	10	11	12	13	14	15	16	17	18	19	20	21	22	23	24	25
A																									
B																									
C		6																							
D			5																						
E				4																					
F					3																				
G						2																			
H		7																							
I			6																						
J				9																					
K					10																				
L						11																			
M		16																							
N			17																						
O				16																					
P					15																				
Q						14																			
R							13																		
S								12																	
T									11																
U										10															
V											9														
W												8													
X													7												
Y														6											
Z															5										

PLACE MONUMENT SYMBOL (◆) AT PROPER LOCATION ON ABOVE INDEX

EXAMPLE



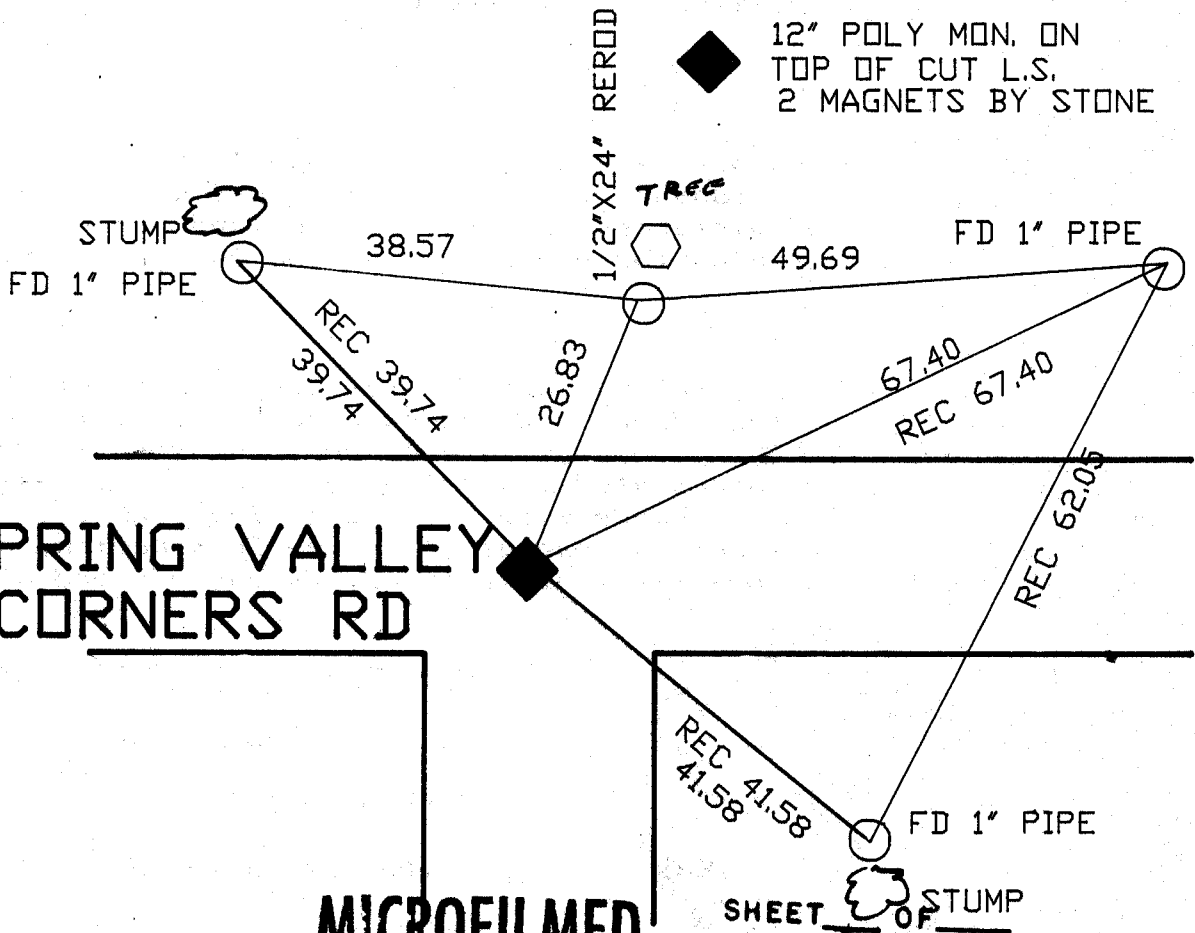
PLYMOUTH TWP
ROCK COUNTY WI

IF AVAILABLE
STATE PLANE COORDINATES

North (Y) 240,853.51 Elev. (Z) _____
 East (X) 2,207,423.46 zone _____
 Hor. Datum _____ Vert. Datum _____

e) CORNER MONUMENT WITNESS MONUMENT

BEARINGS ARE BASED ON:



SPRING VALLEY CORNERS RD

Book 3
PG 23

MICROFILMED

CORNER CODE: E5

(B) Describe any record evidence, monument evidence, occupational evidence, testimonial evidence or any other material evidence you considered, and whether the monument was found or placed.

- 1857 CHURCH VOL 1 PG 66. NO STATEMENT ABOUT CORNER. JUST SHOWS A DISTANCE OF 2640 TO E 1/4 CORNER OF SECTION 7.
- 1865 LOCKE VOL 1 PG 234. BTS DUG OUT. SHOWS A DISTANCE OF 2607.26 TO SOUTH QUARTER CORNER OF SECTION 5.
- 1868 LOCKE VOL 1 PG 309 BTS DUG OUT AND CORNER LOST. SET IT FROM 1/16th AND QUARTER CORNER TO SOUTH. SET BR O STAKE WITH LARGE HH ON SOUTH.
- 1868 LOCKE REMONUMENTATION FIELD NOTES. "INTERSECTED SOUTH BOUNDARY 2 LKS WEST OF CORNER. FOUND CORNER AS SET BY SELF (SEE COUNTY SURVEYORS RECORDS) AND STUMPS OF BTs IN SECTION 7 AND 8. CORNER IS IN ROAD." SHOWS A DISTANCE OF 2656.50 TO WEST QUARTER CORNER OF SECTION 5, 2655.84 TO SOUTH QUARTER CORNER OF SECTION 6, 2655.84 TO WEST QUARTER CORNER OF SECTION 7, AND 2655.84 TO SOUTH QUARTER CORNER OF SECTION 5.
- 1869 RUGER VOL 2 PG 9 FOUND STONE MONUMENT SET BY LOCKE. SHOWS DISTANCES OF 2657.50 TO NORTH AND 2653.86 TO EAST QUARTER CORNERS OF SECTION 7.
- 1870 RUGER VOL 2 PG 16 FOUND STONE POST SET BY LOCKE.
- 1960 BATTERMAN JR. VOL 4 PG 77 FOUND STONE MONUMENT. REFERENCED SAME.

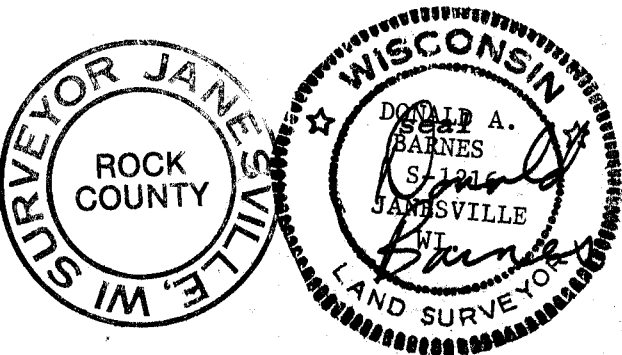
FOUND CUT LIMESTONE 12" DEEP AND 3.00' SHORT TIES. PLACED 2 MAGNETS BY STONE AND POLY MONUMENT ON TOP OF STONE.

C) Was the corner restored through acceptance of (1) an obliterated evidence location, or, (2) a found perpetuated location?

D) Describe any material discrepancy between the location of the corner as restored or reestablished and the location of that corner as previously restored or reestablished by distance and direction. Show the discrepancy on the plan view drawing under (a), above. Show the distances between the corner as previously restored or reestablished and (1) the corner as restored or reestablished, and (2) to at least 4 of the witness monuments shown on the drawing in (a), above.

(E) Was the corner reestablished through lost corner proportionate methods? If so, show the method, including the directions and distances to other public land survey corners used as evidence or used for proportioning the corner location.

I, Donald Barnes, hereby certify that the corner points as identified by the corner code index were, in a field survey on, Oct 26 1989, established, re-established, monumented, re-monumented, recovered or restored as expressed below and in conformance with the regulations and rules as required in the current manual of survey instructions of the United States Department of Interior, Bureau of Land Management.



COUNTY SURVEYOR FILING DATA

Date of computer entry _____

Date microfilmed _____

Number of included sheets _____
CORNER CODE