

U.S. PUBLIC LAND SURVEY MONUMENT RECORD

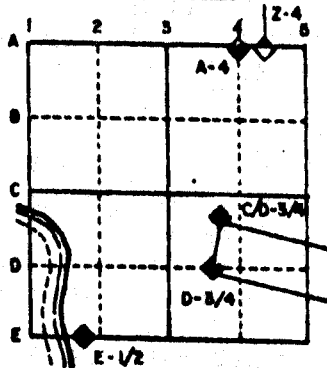
For Public Land Survey Corners in the
T. 2 N., R. 11 E.

CORNER CODE INDEX

	1	2	3	4	5	6	7	8	9	10	11	12	13	14	15	16	17	18	19	20	21	22	23	24	25
A																									
B																									
C																									
D																									
E																									
F																									
G																									
H																									
I																									
J																									
K																									
L																									
M																									
N																									
O																									
P																									
Q																									
R																									
S																									
T																									
U																									
V																									
W																									
X																									
Y																									
Z																									

PLACE MONUMENT SYMBOL (◆) AT PROPER LOCATION ON ABOVE INDEX

EXAMPLE



PLYMOUTH TWP
ROCK COUNTY WI

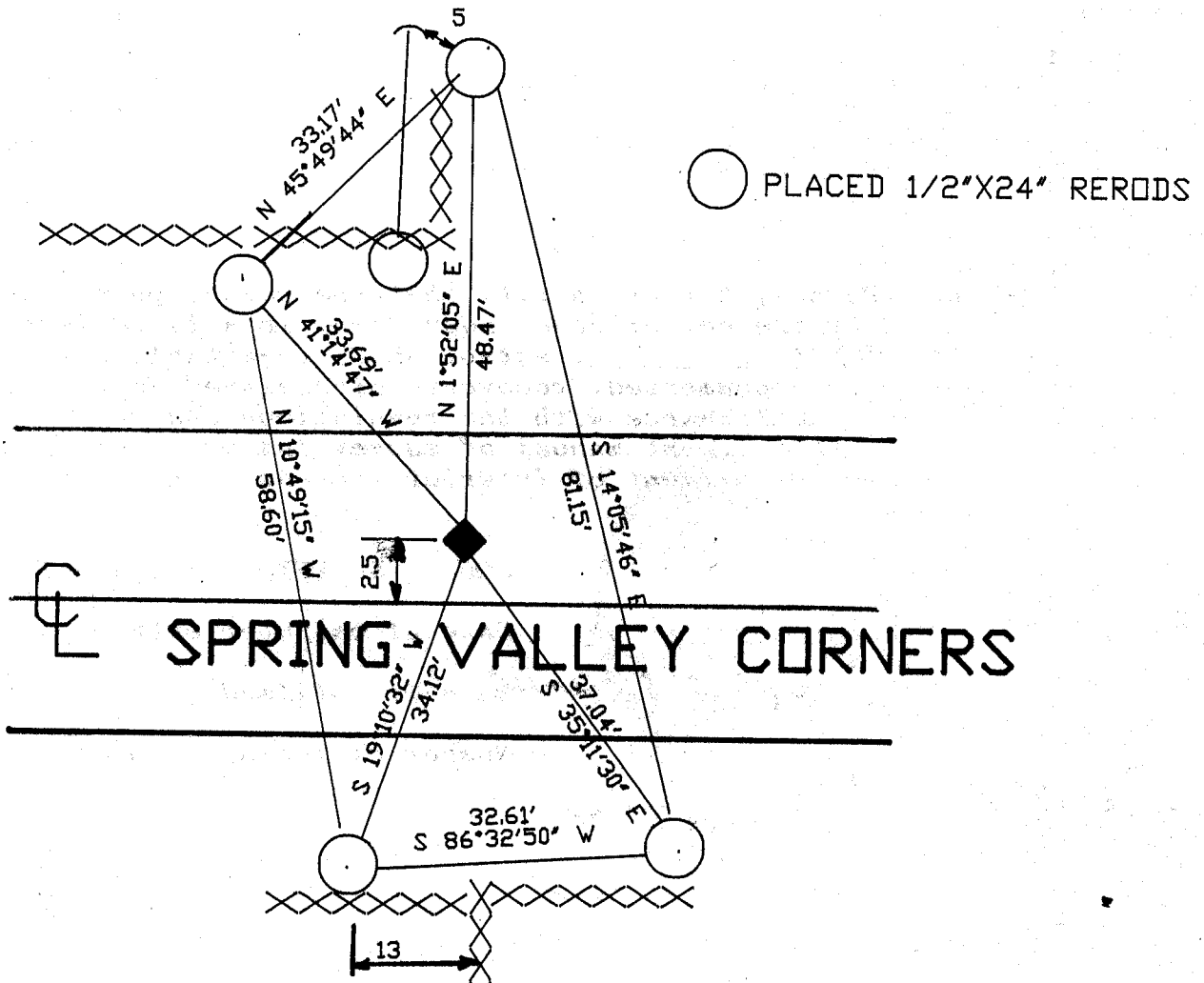
IF AVAILABLE
STATE PLANE COORDINATES

North (Y) 240,816.07 Elev. (Z) _____
 East (X) 2,204,762.89 zone _____
 Hor. Datum _____ Vert. Datum _____

e.) ◆ CORNER MONUMENT ○ WITNESS MONUMENT

Poly mon on top OF LIMESTONE

BEARINGS ARE BASED ON: STATE PLANE
1927 DATUM



SPRING VALLEY CORNERS

MICROFILMED

SHEET ___ OF ___

CORNER CODE: E3

(B) Describe any record evidence, monument evidence, occupational evidence, testimonial evidence or any other material evidence you considered, and whether the monument was found or placed.

1867 LOCKE VOL 1 PG 293 FOUND STUMPS OF BT & STAKE OF W.O. N11E
1868 LOCKE REMONUMENTATION FIELD NOTES. INTERSECTED 1/4 LINE 7 LKS NORTH OF CORNER. FOUND STUMPS OF BTs AND STAKE. NORTH B.T. IS N11E. 2655.84 TO SE AND 2678.61 TO SW CORNERS OF SECTION 6.

1869 RUGER VOL 2 PG 9 FOUND STONE MONUMENT BY LOCKE. SHOWS A DISTANCE OF 2758.8 TO CENTER OF SECTION 7.

1870 RUGER VOL 2 PG 16 & VOL 6 PG 405 FOUND STONE POST SET BY LOCKE. USED CORNER TO SUBDIVIDE SW 1/4 OF SEC 6. 2657.50 TO SE AND 2686.86 TO SW CORNERS OF SECTION 6.

DUG AND FOUND CUT LIMESTONE 2.5 NORTH OF CENTER LINE OF PAVEMENT. TOP OF STONE IS 6 INCHES DEEP. BROKE EAST HALF OF THE TOP 18 INCHES OFF. PLACED 3 MAGNETS BY STONE.

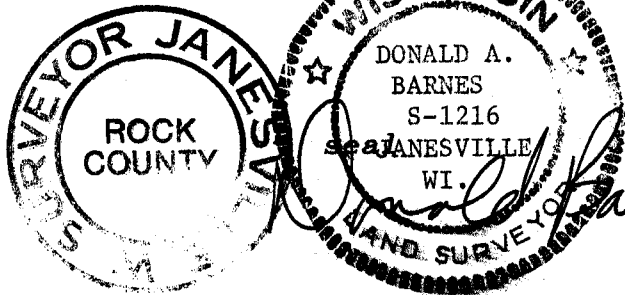
C) Was the corner restored through acceptance of (1) an obliterated evidence location, or, (2) a found perpetuated location?

ACCEPTED FOUND CUT LIMESTONE.

D) Describe any material discrepancy between the location of the corner as restored or reestablished and the location of that corner as previously restored or reestablished by distance and direction. Show the discrepancy on the plan view drawing under (a), above. Show the distances between the corner as previously restored or reestablished and (1) the corner as restored or reestablished, and (2) to at least 4 of the witness monuments shown on the drawing in (a), above.

(E) Was the corner reestablished through lost corner proportionate methods? If so, show the method, including the directions and distances to other public land survey corners used as evidence or used for proportioning the corner location.

I, Donald Barnes, hereby certify that the corner points as identified by the corner code index were, in a field survey on, Oct 19 1989, established, re-established, monumented, re-monumented, recovered or restored as expressed below and in conformance with the regulations and rules as required in the current manual of survey instructions of the United States Department of Interior, Bureau of Land Management.



COUNTY SURVEYOR FILING DATA

Date of computer entry _____

Date microfilmed _____

Number of included sheets _____
CORNER CODE

AFFIX YOUR LAND SURVEYOR SEAL