

# U.S. PUBLIC LAND SURVEY MONUMENT RECORD

For Public Land Survey Corners in:

WI ADMINISTRATIVE CODE A-E 7.08 REQUIREMENT

T. 2N., R. 11E

### CORNER CODE INDEX

A	1	2	3	4	5	6	7	8	9	10	11	12	13	14	15	16	17	18	19	20	21	22	23	24	25
B																									
C	6					5					4				3						2				1
D																									
E																									
F																									
G	1					8					9				10						11				12
H																									
J																									
K																									
L	18					17					16				15						14				13
M																									
N																									
O																									
P	19					20					21				22						23				24
Q																									
R																									
S																									
T	30					29					28				27						26				25
U																									
V																									
W																									
X	31					32					33				34						35				36
Y																									
Z																									

PLYMOUTH TWP

ROCK COUNTY WI

IF AVAILABLE  
ROCK COUNTY COORDINATES PREFERRED

North \_\_\_\_\_ Elev. \_\_\_\_\_

East \_\_\_\_\_

Hor. Datum \_\_\_\_\_ Vert. Datum \_\_\_\_\_

LATITUDE \_\_\_\_\_ ELLIPS. HT. \_\_\_\_\_

LONGITUDE \_\_\_\_\_

GPS (X) \_\_\_\_\_ TRAVERSE (X) \_\_\_\_\_

BASED ON THE FOLLOWING CONTROL:

PLACE MONUMENT SYMBOL  AT PROPER LOCATION ON ABOVE INDEX

CORNER MONUMENT

WITNESS MONUMENT

(a)

BEARINGS ARE BASED ON: \_\_\_\_\_

FIELD BOOK \_\_\_\_\_ PAGE # \_\_\_\_\_

SHEET 1 OF 3

SHOW A PLAN VIEW DRAWING DEPICTING THE CORNER MONUMENT AND SURROUNDING PHYSICAL FEATURES, INCLUDING THE EXCAVATION AREA AND DEPTH.

PLANNING & ZONING COMMITTEE ADOPTED THE ABOVE FORM ON 12/2/1982

CORNER CODE Z-5

PL623

(B) Describe any record evidence, monument evidence, occupational evidence, testimonial evidence or any other material evidence you considered, and whether the monument was found or placed.

- 1833 MULLETT PG 3 WEST ON SOUTH SIDE SECTION 31 (T2N R11E)  
660 LEAVE PRAIRIE & ENTER WOODLAND  
2640 SET QUARTER SECTION POST BUR OAK 14 N31E 116.16'; BUR OAK 16 N42W 80.52'  
5280 INTERSECTED RANGE LINE 264' SOUTH OF TEMPORARY POST FOR CORNER TO TOWNSHIP 1 & 2 N RANGES 10 & 11E. BUR OAK 14 S34E 15.84', BUR OAK 12 N82W 33', BUR OAK 12 S46W, BUR OAK 14 N68E. LAND ROLLING FIRST RATE BLACK WHITE AND BUR OAK. SEPT 6<sup>TH</sup>, 1833
- 1833 MULLETT PG 3 WEST ON SOUTH SIDE SECTION 32 (2N R11E)  
66 LEAVE PRAIRIE AND ENTER MARSH  
330 STREAM 2.64' C SOUTH  
759 LEAVE MARSH AND ENTER WOOD LAND  
1188 ENTER PRAIRIE  
2640 SET QUARTER SECTION POST IN PRAIRIE SECTION POST IN PRAIRIE AND MADE A MOUND  
5280 SET POST CORNER SECTION 31 & 32 IN PRAIRIE AND MADE MOUND LAND MOST ROLLING DRY PRAIRIE FIRST RATE BY OBSERVATION VAR FOUND 7-35
- 1833 HARRISON DEC. PG 32 NORTH BETWEEN SEC 31 & 32 T2N R11E  
2640 QUARTER SEC COR NEAR N.E. EDGE OF PRAIRIE BUR OAK 24 S86E 378.84'  
4785 LEFT PRAIRIE & ENTER TIMBER  
5280 COR TO SECS 29,30,31,32 BUR OAK 24 N41E 51.48', BUR OAK 18 N22W 97.02', BUR OAK 10 S78W 166.98', BUR OAK 10 S76E 34.98'
- 1834 MILLER PG 38 NORTH BETWEEN SEC 5 & 6  
349.8 BUR OAK 15 IN DIAMETER  
2014.32 HICKORY 12 IN DIAMETER  
2640 SET 1/4 SEC POST WHITE OAK 14 IN S89W 12.54', WHITE OAK 14 IN N89 1/2 E 22.44'  
4047.12 BUR OAK 16  
4950 ENTER PRAIRIE  
5250.96 INTERSECTED N. BOUNDARY 30.36' W OF POST. SET POST COR OF SECS 5 & 6 WHITE OAK 18 IN S5E 696.96'; BUR OAK 22 S12W 284.46' LAND 2ND RATE GENTLY ROLLING. TIMBER OAK & HICKORY. OAK TO HAZEL UNDER GROWTH. PRAIRIE GRASS. MARCH 13, 1834.
- 1833 ORIG PLAT SHOW SE COR SEC 31 PLYMOUTH TWP 30.36' EAST OF THE NW COR SEC 5 NEWARK TOWNSHIP.
- 1868 LOCKE PLYMOUTH TWP REMONUMENTATION SEPT 11 1868  
PG 70 WEST ON SOUTH LINE SEC 32 (T2N R11E) VAR 6-20  
0 SET OFF 12.87' SOUTH  
406.89 CENTER OF BRIDGE OVER CREEK 7.92' WIDE  
2640 SET TEMPORARY 1/4 COR. COR. LOST.  
5321.91 INTERSECTED WEST BOUNDARY 60.39' SOUTH OF COR. FOUND OLD STAKE & WHERE BTS WERE DUG OUT. COR IN CENTER OF HIGHWAY RUNNING SOUTH & ON SOUTH SIDE OF E&W HIGHWAY  
2660.96 SET 1/4 COR 20.96' WEST AND 36.63' NORTH OF TEMPORARY 1/4 COR. COR IN HIGHWAY. VAR CORRECTED (WHOLE LINE) 5-49.  
PG 71 NORTH BETWEEN SECS 31 & 32 SEPT 12, 1868 VAR 7-10  
2676.3 INTERSECTED 1/4 LINE 11.22' WEST OF 1/4 COR. FOUND STUMP OF B.T. AND OLD STAKE COR. IN N AND S FENCE. VAR CORRECTED 6-55  
CONTINUED NORTH FROM 1/4 COR WITH VAR 7-5  
5327.52 INTERSECTED NORTH BOUNDARY 18.48' EAST OF COR. VAR CORRECTED 7-29  
PG 73 EAST ON SOUTH LINE SEC 31 SEPT 14 1868 VAR 6  
2657.82 INTERSECTED 1/4 LINE 13.53' NORTH OF COR. FOUND WEST BT AND STUMP OF EAST BT. COR IN CENTER OF HIGHWAY AND IN LINE OF FENCE RUNNING SOUTH. VAR CORRECTED 5-43

Donald  
Baines 7-20-01

- 5320.92 INTERSECTED EAST BOUNDARY 22.11' NORTH OF COR. VAR  
CORRECTED 5-31 1/4 MONUMENT MARKED 31 ON ITS NORTH FACE.  
1871 COLLIN'S REMONUMENTATION PG 210 NORTH BETWEEN 5 & 6 VARIATION 7-30  
2662.44 INTERSECT 1/4 LINE 7.26' EAST OF CORNER. SET 1/4 STONE BY STUMPS  
OF WITNESS TREES. CORRECTED VARIATION 7-20  
CONTINUED NORTH VARIATION 7-30  
5180.34 SECTION CORNER.  
PG 211 EAST ON NORTH LINE OF 5 VARIATION 5-43  
5386.92 SET STONE FOR CORNER OF 4 & 5 36.96' EAST OF PLYMOUTH CORNER.  
BACK  
2693.46 SET 1/4 STONE 5.94' EAST OF PLYMOUTH 1/4 COR.  
PG 209 EAST ON NORTH LINE SEC 6 VARIATION 5-52  
5283.96 SET STONE FOR CORNER OF 5 & 6 BY STUMP OF WITNESS TREE.  
PLYMOUTH CORNER IS 30.36' WEST. {ORIG GOV. CALLS FOR  
PLYMOUTH COR. EAST OF NE COR SEC 5.}  
BACK  
2641.98 SET 1/4 STONE 13.2' W(?) OF PLYMOUTH CORNER. NOV 4th 1871  
1875 RUGER VOL 2 PG 193 CALLS FOR STONE MON. (NO DISTANCES) @ SW COR SEC  
32.  
1878 RUGER VOL 2 PG 244 CALLS FOR STONE MON AND VAR 4-30 TO N 1/4 COR SEC  
5, VAR 4-30 2688.18' FROM N 1/4 COR TO NE CORNERS OF SEC 5, VAR 7-00 2516.91  
TO W 1/4 COR SEC 5.  
1937 SUNNY VOL 3 PG 357 DUG 6X8X4 DEEP FD NO MON (WESTERN HOLE) & DUG  
5X8X4 DEEP (EASTERN HOLE) FD NO MON AT PLY. CORNER. 2517.9 TO W 1/4  
COR SEC 5.  
1957 BATTERMAN VOL 3 PG 521 STONE MON NOT FD. 2645.46 TO N 1/4 COR SEC 6,  
2521.22 TO E 1/4 COR SEC 6 TO NE COR SEC 6.  
1957 BATTERMAN VOL 3 PG 522 2645.46 FROM N 1/4 COR SEC 6 TO NE COR SEC 6.  
1967 BATTERMAN VOL 4 PG 315 FD 6X6X24 CUT L.S. IN 3 PIECES AT NE COR SEC 6  
NEWARK TWP. SET TIES. CALLS FOR IT 27' SOUTH OF CENTER OF PVMT.  
DUG & FD NOTHING AT SE COR SEC 31 PLY.  
1976 BARNES VOL 5 PG 171 FD C.I. AT THE NE COR SEC 6 NEWARK TWP &  
REFERENCED SAME.

DUG 4X6' HOLE AND FOUND CUT LIMESTONE 1' BELOW PVMT. L.S. IS IN HARMONY  
WITH LOCK'S REMONUMENTATION. PLACED MAGNETS ON WEST SIDE. IT IS S86-53-  
34E 30.70' OF THE NE COR SEC 5 NEWARK TWP.

C) Was the corner restored through acceptance of (1) an obliterated evidence location, or, (2) a found  
perpetuated location?

ACCEPTED FOUND PERPETUATED LOCATION

I, Donald Barnes, hereby certify that the corner location as identified by the corner code index was  
determined by me under my direction and control and that this U.S. Public Land Survey Monument Record  
is correct and complete to the best of my knowledge and belief.

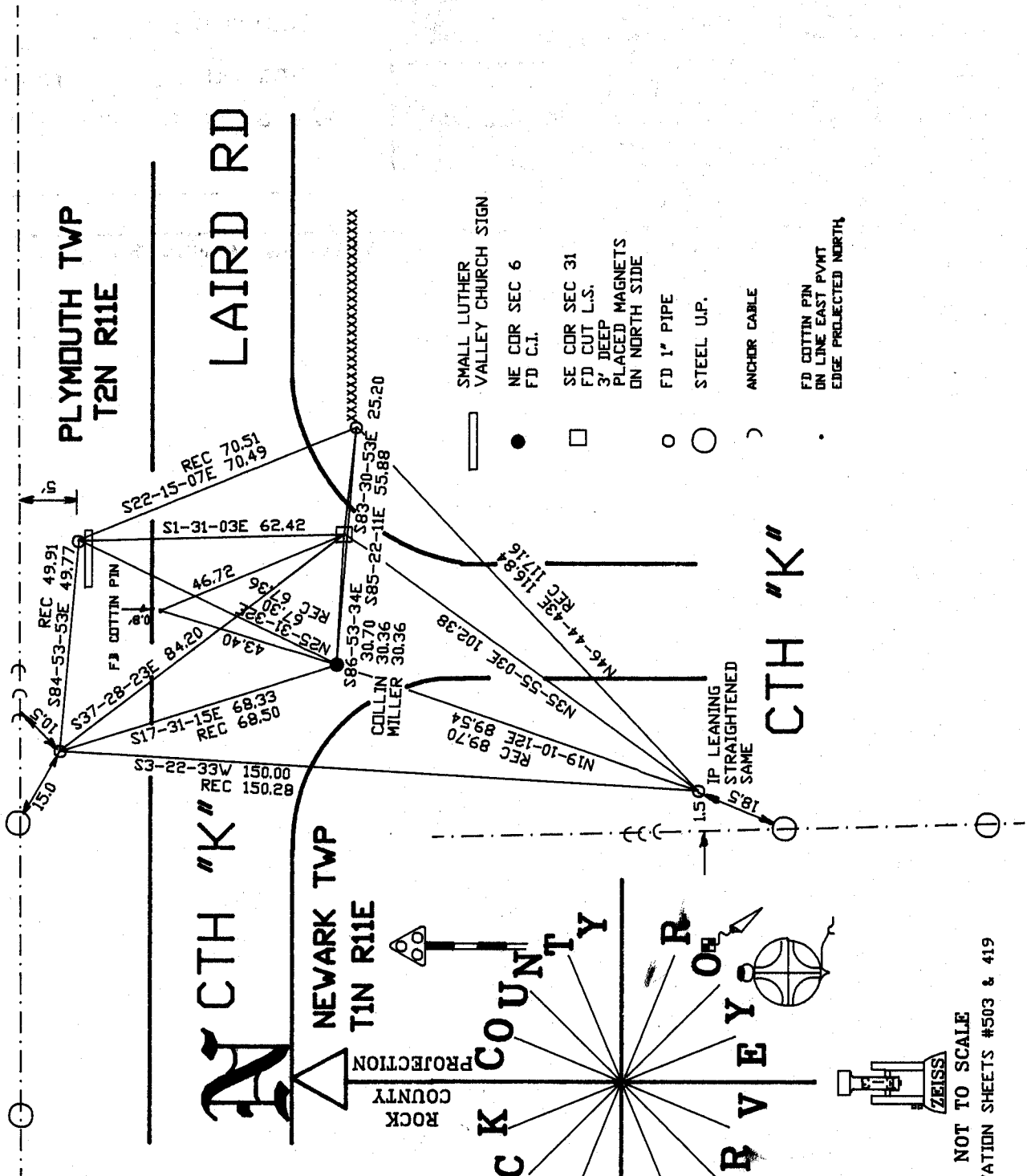
ssal

Donald  
Barnes  
7-20-01

SHEET 2 OF 3

CORNER CODE **Z-5**

A-E 7.08 REQUIREMENT



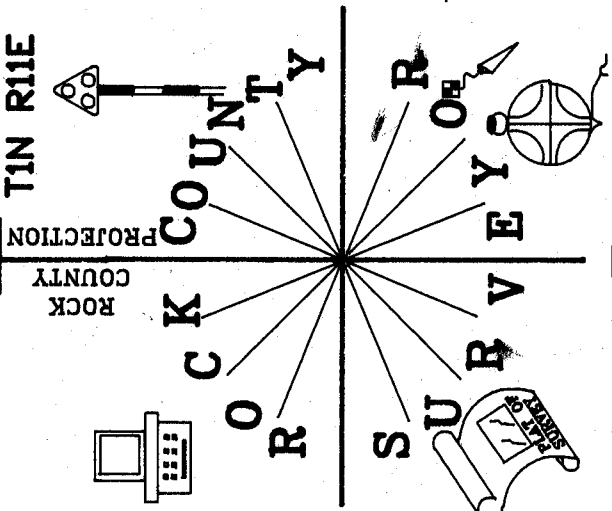
- SMALL LUTHER VALLEY CHURCH SIGN
- NE COR SEC 6  
FD C.I.
- SE COR SEC 31  
FD CUT L.S.  
3' DEEP  
PLACED MAGNETS  
ON NORTH SIDE
- FD 1" PIPE
- STEEL UP.
- ANCHOR CABLE
- FD COTTIN PIN  
ON LINE EAST PVNT  
EDGE PROJECTED NORTH

PLYMOUTH TWP  
T2N R11E

LAIRD RD

NEWARK TWP  
T1N R11E

CTH "K"



NOT TO SCALE  
OBSERVATION SHEETS #503 & 419

*Donell Barnes*  
EMBOSSSED SEAL  
7-20-01