

U.S. PUBLIC LAND SURVEY MONUMENT RECORD

For Public Land Survey Corners In:

WI ADMINISTRATIVE CODE A-E 7.08 REQUIREMENT

T. 2 N. R. 11 E.

CORNER CODE INDEX

1	2	3	4	5	6	7	8	9	10	11	12	13	14	15	16	17	18	19	20	21	22	23	24	25	
A																									A
B																									B
C																									C
D																									D
E																									E
F																									F
G																									G
H																									H
I																									I
J																									J
K																									K
L																									L
M																									M
N																									N
O																									O
P																									P
Q																									Q
R																									R
S																									S
T																									T
U																									U
V																									V
W																									W
X																									X
Y																									Y
Z																									Z

PLYMOUTH TWP
ROCK COUNTY WI

IF AVAILABLE
ROCK COUNTY COORDINATES PREFERRED

North _____ Elev. _____

East _____

Hor. Datum _____ Vert. Datum _____

LATITUDE _____ ELLIPS. HT. _____

LONGITUDE _____

GPS (X) _____ TRAVERSE (X) _____

BASED ON THE FOLLOWING CONTROL:

1 2 3 4 5 6 7 8 9 10 11 12 13 14 15 16 17 18 19 20 21 22 23 24 25
PLACE MONUMENT SYMBOL AT PROPER
LOCATION ON ABOVE INDEX

CORNER MONUMENT

WITNESS MONUMENT

(a)

BEARINGS ARE BASED ON: _____

FIELD BOOK _____ PAGE # _____

SHEET 1 OF 3

SHOW A PLAN VIEW DRAWING DEPICTING THE CORNER MONUMENT AND SURROUNDING
PHYSICAL FEATURES, INCLUDING THE EXCAVATION AREA AND DEPTH.

PLANNING & ZONING COMMITTEE ADOPTED THE ABOVE FORM ON 12/2/1982

CORNER CODE R-5

PL583

(B) Describe any record evidence, monument evidence, occupational evidence, testimonial evidence or any other material evidence you considered, and whether the monument was found or placed.

1833 HARRISON NORTH BET SECS 29 & 30
1326.6 LEFT TIMBER & ENTER PRAIRIE
2640 QUARTER SEC COR ON GROUND ASCENDING N.
SET POST & RAISED MOUND.
5280 SEC COR TO SECS 19,20,29,30 SET POST &
RAISED MOUND. LAND HIGH ROLLING 1ST RATE
PRAIRIE GROWTH GRASS & WEEDS.
EAST ON RAND. BET 20 & 29
2640 QUARTER SEC COR (TEMPY)
5301.12 INT. E BDY AT POST LAND HIGH ROLLING 1ST RATE
PRAIRIE ? GRASS & WEEDS
COR WEST
2650.56 SET QUARTER SEC COR POST & RAISED MOUND
5301.12 INT. W. BDY
WEST ON RAND BET 19 & 30
1650 BROOK CRS 5.28' N.W.
2640 TEMPY 1/4 SEC COR.
5276.7 INT. W. BDG AT POST & ESTABLISHED COR TO SEC
19 & 30. BEARINGS {'BLANK' LAND & SAME
COR EAST
2636.7 QUARTER SEC COR ON GROUND DESCENDING N.W.
SET POST & RAISED MOUND
5276.7 SEC
NORTH BET SEC 19 & 20
2640 QUARTER SEC COR NEAR N. EDGE OF PRAIRIE
{RED O 16 N56E 205.26' RED O 16} MARKED
3696 LEFT PRAIRIE & ENTER TIM.
4620 LEFT TIM & ENTER MARSH
5280 SET COR TO SECS 17 18 19 20 {SET POST &
RAISED MOUND OF TUSSACKS IN MARSH LAND
ROLLING PRAIRIE AS BEFORE FOR 1ST 3696'
REMAINDER WET 3RD RATE MOSTLY MARSH.
1854 McVEAN VOL 1 PG 22 2645.94 TO S 1/4 COR SEC 19 &
5290.56 TO NE COR SEC 19. STATES NOTHING ABOUT MON.
1867 LOCKE VOL 1 PG 286 & MAP #4375 STATES NOTHING
ABOUT
MON. VAR 6-10 2655.18 TO S 1/4 COR SEC 20
1868 LOCKE PG 62 NORTH BETWEEN SECS 29 AND 30 VAR 7-10
O OFF 19.14'
1327.92 FENCE RUNNING EAST
2652.54 INTERSECTED 1/4 LINE 13.53' WEST OF COR.
FOUND LARGE LIMESTONE SET FOR COR. 4
INCHES WEST OF FENCE POST AT ANGLE OF ROAD
AND ON SOUTH SIDE THERE OF. VAR CORRECTED
7-17
CONTINUED NORTH FROM 1/4 COR WITH VAR 7-10
5304.75 INTERSECTED NORTH BOUNDARY 3.63' EAST OF
COR. FOUND STAKE SET BY SELF. (SEE CO.
SURVEYOR RECORD) SEC 20) VAR CORRECTED 7-
15 SEPT 9 1868
PG 74 WEST BETWEEN SECS 20 AND 29 VAR 6-05
2677.62 INTERSECTED 1/4 LINE 8.58' NORTH OF COR.
FOUND COR AS SET BY SELF. (SEE CO SURVEYORS
RECORD SEC 20) IN CENTER OF OLD HIGHWAY AND
1.32' EAST OF LINE OF FENCE RUNNING SOUTH.
VAR CORRECTED 6-16
CONTINUED WEST FROM 1/4 COR WITH VAR 6-05
3022.8 BOTTOM OF RAVINE
5338.41 INTERSECTED WEST BOUNDARY AT COR. FOUND
COR. AS SET BY SELF. (SEE CO SURVEYORS
RECORD) COR. IN CENTER OF OLD ROAD AND IN
SHEET 1 OF 3 CORNER CODE R-5

Donald Barnes
1/03/03

PL583

LINE OF FENCE RUNNING SOUTH & 1 FT E OF
FENCE RUNNING NORTH. SEPT 15, 1868
PG 75 WEST BETWEEN SECS 19 AND 30 VAR 6-22

1651.98 BOTTOM OF RAVINE
2655.18 INTERSECTED ¼ LINE 5.61' NORTH OF COR.
FOUND OLD STAKE 1 FT NORTH OF FENCE POST IN
E & W FENCE VAR CORRECTED 6-29
CONTINUED WEST FROM ¼ COR WITH VAR 6-22

5316.3 INTERSECTED WEST BOUNDARY 3.96' NORTH OF
COR. VAR CORRECTED 6-27 SEPT 15 1868
PG 76 NORTH BETWEEN SECS 19 AND 20 VAR 7-40

2667.56 INTERSECTED ¼ LINE 12.21' WEST OF COR.
FOUND STUMP OF B.T. AND OLD STAKE. COR. IN
LINE OF N & S FENCE AND IN CENTER OF
HIGHWAY. VAR CORRECTED 7-24
CONTINUED NORTH FROM ¼ COR WITH VAR 7

5337.92 INTERSECTED NORTH BOUNDARY 12.54' EAST OF
COR. COR. LOST. SEE PAGE 66 VAR CORRECTED
7-16 SEPT 15 1868

1992 BARNES VOL 6 PG 430 FD CUT L.S. SB9-31-16W 2655.52
TO S ¼ COR SEC 19, SO-00-26E 2653.76 TO E ¼ COR SEC
30, & NO-03-06W 2667.88 TO E ¼ COR SEC 20

FD CUT L.S. PLACED 2 MAGNETS 0.1' BELOW GRADE ON WEST
SIDE OF L.S. IN FARM LANE.

C) Was the corner restored through acceptance of (1) an obliterated evidence location, or, (2) a found perpetuated location?

ACCEPTED FD CUT L.S.

D) Describe any material discrepancy between the location of the corner as restored or reestablished and the location of that corner as previously restored or reestablished by distance and direction. Show the discrepancy on the plan view drawing under (a), above. Show the distances between the corner as previously restored or reestablished and (1) the corner as restored or reestablished, and (2) to at least 4 of the witness monuments shown on the drawing in (a), above.

(E) Was the corner reestablished through lost corner proportionate methods? If so, show the method, including the directions and distances to other public land survey corners used as evidence or used for proportioning the corner location.

I, Donald Barnes, hereby certify that the corner location as identified by the corner code index was determined by me under my direction and control and that this U.S. Public Land Survey Monument Record is correct and complete to the best of my knowledge and belief.

Seal
Donald Barnes

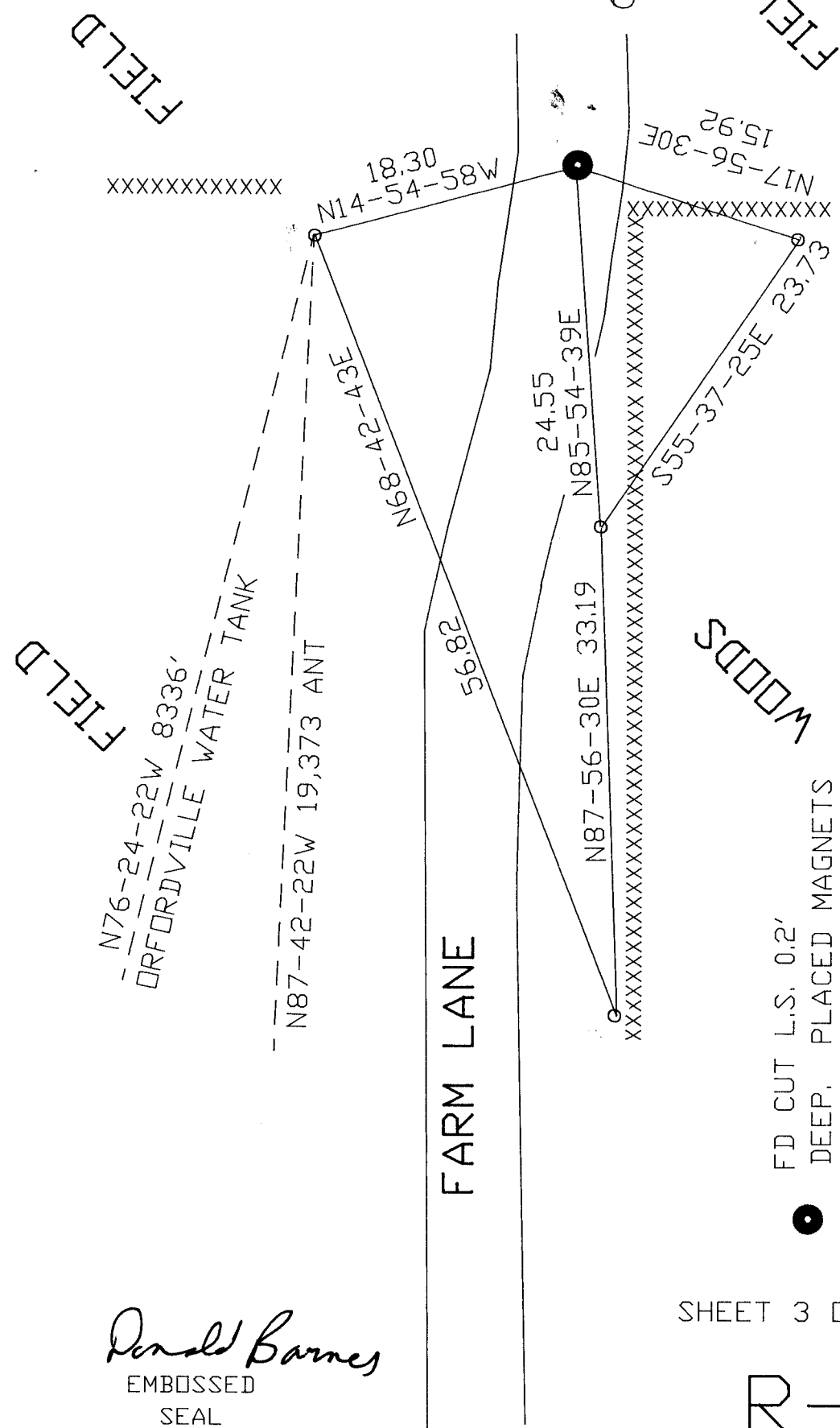
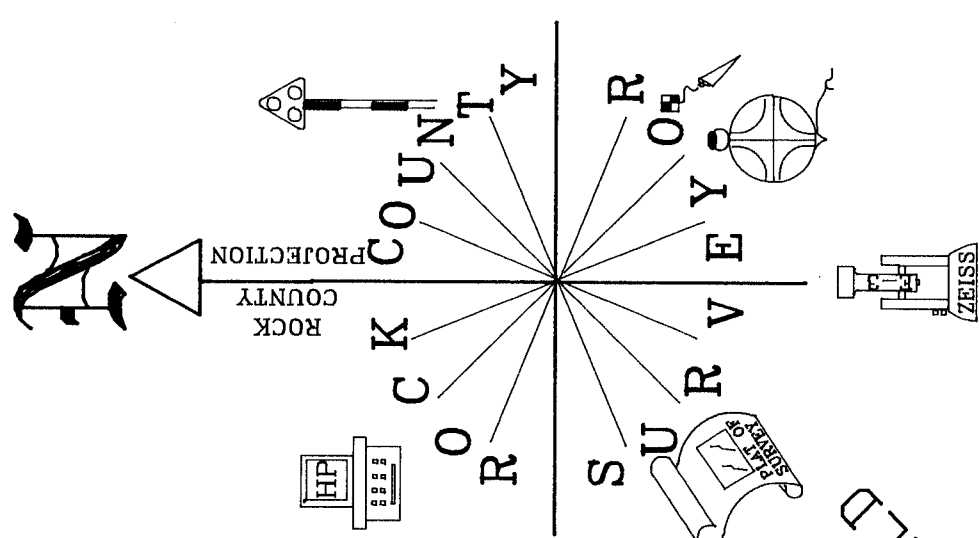
Emboss

1103/03

SHEET 2 OF 3

CORNER CODE **R-5**

A.E. 7.08 REQUIREMENT



OBSERVATION SHEETS 251 & 321

- FD CUT L.S. 0.2' DEEP, PLACED MAGNETS 0.1' BELOW L.S. TOP
- 3/4X24" REROD/ PLASTIC CAP

SHEET 3 OF 3

R-5

Donald Barnes
 EMBOSSED SEAL
 1/03/03