

U.S. PUBLIC LAND SURVEY MONUMENT RECORD

For Public Land Survey Corners in:

WI ADMINISTRATIVE CODE A-E 7.08 REQUIREMENT

T. 2 N., R. 11 E

CORNER CODE INDEX

A	1	2	3	4	5	6	7	8	9	10	11	12	13	14	15	16	17	18	19	20	21	22	23	24	25
B																									
C	6																								
D																									
E																									
F	7	8	9	10	11	12																			
G																									
H																									
J																									
K	18	17	16	15	14	13																			
L																									
M																									
N																									
O	19	20	21	22	23	24																			
P																									
Q																									
R																									
S	30	29	28	27	26	25																			
T																									
U																									
V																									
W																									
X	31	32	33	34	35	36																			
Y																									
Z																									

PLYMOUTH TWP
ROCK COUNTY WI

IF AVAILABLE
ROCK COUNTY COORDINATES PREFERRED

North _____ Elev. _____

East _____

Hor. Datum _____ Vert. Datum _____

LATITUDE _____ ELLIPS. HT. _____

LONGITUDE _____

GPS (X) _____ TRAVERSE (X) _____

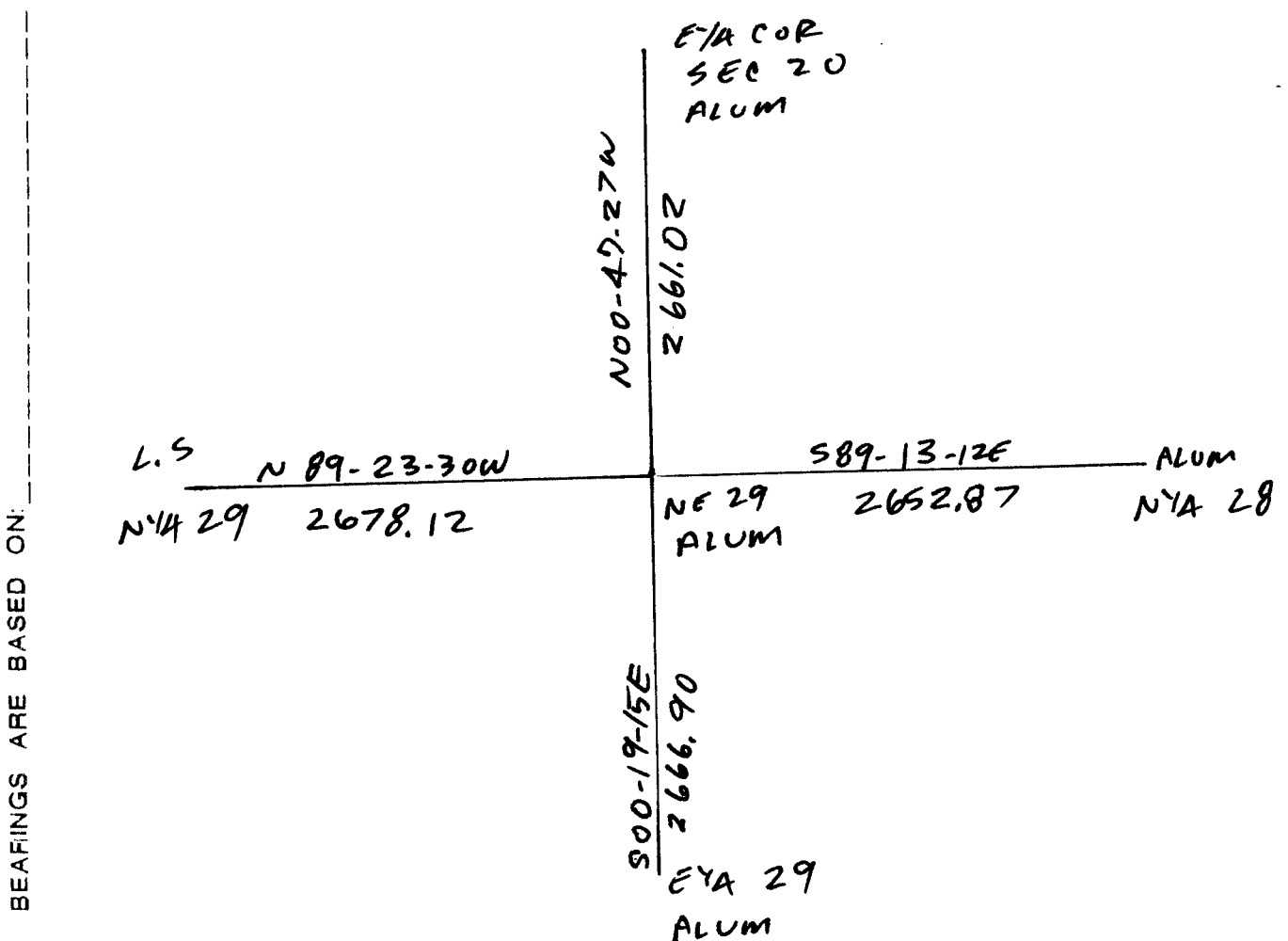
BASED ON THE FOLLOWING CONTROL:

PLACE MONUMENT SYMBOL \blacklozenge AT PROPER LOCATION ON ABOVE INDEX

\blacklozenge CORNER MONUMENT

\circ WITNESS MONUMENT

(a)



OBSERVATION SHEETS 262, 293, 584, 8703

FIELD BOOK _____ PAGE # _____

SHEET 1 OF 3

SHOW A PLAN VIEW DRAWING DEPICTING THE CORNER MONUMENT AND SURROUNDING PHYSICAL FEATURES, INCLUDING THE EXCAVATION AREA AND DEPTH.

PLANNING & ZONING COMMITTEE ADOPTED THE ABOVE FORM ON 12/2/1982

CORNER CODE R-9

PL585

(B) Describe any record evidence, monument evidence, occupational evidence, testimonial evidence or any other material evidence you considered, and whether the monument was found or placed.

- 1833 HARRISON NORTH BET 28 & 29
- 2640 QUARTER SEC COR. IN RAVINE DESCENDING ?. SET POST & RAISED MOUND
- 5280 SET COR TO SECS 20 21 28 29 ON GROUND DESCENDING SE SET POST & RAISED MOUND. LAND HIGH ROLLING PRAIRIE 1ST RATE GROWTH ? & INDIGO & PRAIRIE GRASS.
EAST ON RAND. SES 21 & 28
- 1056 BROOK 3.3' CRS N.E.
- 1386 THICKET
- 1782 LEFT THICKET & ENTER PRAIRIE
- 2640 TEMP ¼ P
- 5267.46 INT. E BDY AT POST LAND HIGH ROLLING PRAIRIE 1ST RATE
COR. WEST
- 2633.73 QUARTER SEC COR ON GROUND DESCENDING NE. SET POST & RAISED MOUND
- 5267.46 SEC COR
NORTH BETWEEN SECS 20 & 21
- 1716 LEFT PRAIRIE & ENTER TIMBER
- 2265.78 RED O 12
- 2640 QUARTER SEC COR. {BURR O 24 N49E 26.4' BURR O. 6 N78W 9.24' BURR O 24 BURR O 6} MARKED
- 3333 LEFT TIMBER & ENTER MARSH
- 5280 COR TO SECS 16 17 20 21 IN MARSH {BURR O 24 S79W 248.82' BURR O 10 N62W 271.26' LEVEL 1ST ¼ ROLLING 1ST RATE PRAIRIE - REMAINDER ROLLING 2ND RATE WITH BUR & WO TIMBER
EAST ON RAND. BET 20 & 29
- 2640 QUARTER SEC COR (TEMPY)
- 5301.12 INT. E BDY AT POST LAND HIGH ROLLING 1ST RATE PRAIRIE ? GRASS & WEEDS
COR WEST
- 2650.56 SET QUARTER SEC COR POST & RAISED MOUND
- 5301.12 INT. W. BDY
- 1844 TWP RD REC BK 1 PG 3 COMMENCING AT THE NE COR OF THE W ½ OF THE NW ¼ OF SEC 26 T2N R11E IN SAID TOWN NEAR THE HOUSE OF WALTER INMAN AND RUNNING WEST ON THE LINE BETWEEN SECTIONS 23 & 26, 1325.28 TO THE COR SECTIONS 22,23,26, AND 27 WHITE OAK 36 INCHES BEARS N59W 64.03' N29E 1.00'; THENCE WEST ON LINE BETWEEN SECTIONS 22 AND 27, 5247' TO THE COR OF SECTION 21,22 AND 27 AND 28 SET POST IN MOUND WHERE OLD POST STOOD; THENCE WEST ON LAND BETWEEN SECTIONS 21 AND 28, 5267.46' TO COR OF SECTIONS 20,21 AND 28 AND 29, SET POST IN MOUND SIGHT OF OLD POST, THENCE WEST ON LINE BETWEEN 20 AND 29 UNTIL IT INTERSECTS THE BELDIT AND MADISON RD. SAID RD IS LAID OUT 66' WIDE OR 33' ON EACH SIDE OF THE LINE.
- 1850 MC VANE TWP RD REC BK 1 PG 27 BEGINNING ON THE SEC LINE 1320' EAST OF THE SW COR SEC 21 T2N R11E; THENCE RUNNING N. ON THE ¼ LINE 1 MILE TO THE NORTH SIDE OF SAID SEC 21 THE AFORESAID ¼ LINE IS THE CENTER OF THE RD
- 1855 CHURCH VOL 1 PG 38 STONE 18 LONG 6 INCH THICK. 2725.8 TO N ¼ COR SEC 28 & VAR 7 ½ 2660.46 TO W ¼ COR SEC 28.
- 1867 LOCKE VOL 1 PG 286 & MAP #4375 FD STONE SET BY CHURCH ON SEC 28. VAR 7-40 ON TO E ¼ COR SEC 20 & VAR 6-20 2672.34 TO S ¼ COR SEC 20.
- 1868 TWP RD REC BK 2 PG 4 COMMENCING AT THE NE COR OF SEC 29, T2, R11E; THENCE RUNNING WEST TO THE MADISON AND BELDIT RD IS HEREBY VACATED.

Ronald Barnes

6-09-03

PL585

1868 LOCKE PG 20 EAST BETWEEN SECS 21 & 28 VAR 6-22
1082.4 CENTER OF SLUICE BRIDGE
1326.6 STONE SET BY CHURCH
2653.2 INTERSECTED 1/4 LINE 17.16' NORTH OF COR AS SET
BY CHURCH (SEE PAGE 18 & ALSO CO. SURVEYORS
RECORD SEC 28) COR IN CENTER OF HIGHWAY &
NEARLY IN LINE WITH FENCE RUNNING SOUTH. VAR
CORRECTED 6
CONTINUED EAST FROM 1/4 COR WITH VAR 5-50
4404.18 CENTER OF BRIDGE IN RAVINE
5308.38 INTERSECTED EAST BOUNDARY AT COR.
PG 60 SOUTH BETWEEN SECS 20 AND 21 VAR 6-15
1980 LEFT MARSH & ENTER TIMBER
2655.51 INTERSECTED 1/4 LINE 31.68' WEST OF COR. FOUND
STUMP OF EAST BT AND WHERE WEST BT WAS
ROTTED OUT AND COR. AS SET BY SELF (SEE CO.
SURVEYOR RECORD SEC 20) COR. IN CENTER OF
HIGHWAY. VAR CORRECTED 6-56
CONTINUED SOUTH FROM 1/4 COR WITH VAR 7
5315.31 INTERSECTED SOUTH BOUNDARY 27.06' WEST OF
COR. VAR CORRECTED 7-35 SEPT 9 1868
PG 74 WEST BETWEEN SECS 20 AND 29 VAR 6-05
2677.62 INTERSECTED 1/4 LINE 8.58' NORTH OF COR. FOUND
COR AS SET BY SELF. (SEE CO SURVEYORS RECORD
SEC 20) IN CENTER OF OLD HIGHWAY AND 1.32'
EAST OF LINE OF FENCE RUNNING SOUTH. VAR
CORRECTED 6-16
CONTINUED WEST FROM 1/4 COR WITH VAR 6-05
3022.8 BOTTOM OF RAVINE
5338.41 INTERSECTED WEST BOUNDARY AT COR. FOUND
COR. AS SET BY SELF. (SEE CO SURVEYORS
RECORD) COR. IN CENTER OF OLD ROAD AND IN
LINE OF FENCE RUNNING SOUTH & 1 FT E OF FENCE
RUNNING NORTH. SEPT 15, 1868
PG 19 NORTH BETWEEN SECS 28 AND 29 VAR 7-30
SET OFF 23.43' EAST
2668.05 INTERSECTED 1/4 LINE 22.77' EAST OF COR. FOUND
STONE SET BY CHURCH (SEE PAGE 18) ALSO CO.
SURVEYORS RECORD SEC 28) COR IN CENTER OF
HIGHWAY RUNNING NORTH & ON WEST LINE OF
HIGHWAY RUNNING SOUTH AND IN LINE WITH
FENCES RUNNING E & W. VAR CORRECTED 7-29
CONTINUED NORTH WITH VAR 7-15
5297.16 INTERSECTED NORTH BOUNDARY .66' WEST OF COR.
FOUND STONE SET BY CHURCH. (SEE CO.
SURVEYORS RECORD SEC 28 ALSO PAGE 18 HEREOF)
VAR CORRECTED 7-14.
1978 LEE CSM VOL 7 PG 313 ALUM. MON.
1978 BARNES VOL 5 PG 429 DUG & FD NOTHING. EST. COR ON
LINE WITH N 1/4 COR & N 1/16 TH COR OF THE NE 1/4 OF SEC 29
AT SINGLE PROPORTIONATE DISTANCE. FD HH @ 1/16TH COR.
SET ALUM. & REFERENCED SAME. 1339.05 FROM 1/16TH COR
TO N 1/4 COR & NE COR SEC 29
1978 BARNES VOL 5 PG 430 2652 TO S 1/4 COR SEC 21, 2678.10
TO S 1/4 COR SEC 20, & 2668 TO W 1/4 COR SEC 28
1978 BARNES VOL 5 PG 473 SO-13-03W 2666.87 TO W 1/4 COR
SEC 28 & 1333 TO E/W FENCE BETWEEN COR & E 1/4 COR SEC
29.
1978 BARNES VOL 5 PG 489 ANGLE 179-18-44 @ W 1/4 COR SEC
21 FROM NW COR SEC 21 TO NE COR SEC 29. 2660.58 FROM
NE COR SEC 29 TO W 1/4 COR SEC 21.
1978 BARNES VOL 5 PG 496 ANGLE 91-33-54 @ SW COR SEC 21
FROM W 1/4 COR SEC 21 TO S 1/4 COR SEC 21. 2653.12 TO S 1/4
COR SEC 21.
1987 KARNS CSM VOL 12 PG 591 CO. MON. 1333.32 SOUTH TO S
1/16TH COR.

SHEET 2 OF 3 CORNER CODE R-9

Donald Barnes
6-9-03

PL585

1995 SCROEDER MAP #9234 STATES NOTHING ABOUT MON.
1996 SCROEDER GCM VOL 19 PG 479 STATES NOTHING ABOUT
MON.

1996 SCROEDER GCM VOL 19 PG 505 STATES NOTHING ABOUT
MON.

2000 KREBS MAP #7596 & 7597 FD ALUM. NO-17-42W 2660.94
TO E ¼ COR SEC 20, N88-54-23W 1338.95 TO HH @ 1/16TH
COR, S88-43-17E TOWARDS S ¼ COR SEC 21. FROM HH @
1/16TH COR TO S ¼ COR SEC 20 N88-53-10W 1339.62

LOCKE'S REMONUMENTATION DISTANCE TO THE E ¼ COR SEC 29
APPEARS TO HAVE A BUST. IT IS PROBABLY ½ A CHAIN (33").

FD ALUM. MON. & TIES.

C) Was the corner restored through acceptance of (1) an obliterated evidence location, or, (2) a found perpetuated location?

ACCEPTED FD ALUM. MON.

D) Describe any material discrepancy between the location of the corner as restored or reestablished and the location of that corner as previously restored or reestablished by distance and direction. Show the discrepancy on the plan view drawing under (a), above. Show the distances between the corner as previously restored or reestablished and (1) the corner as restored or reestablished, and (2) to at least 4 of the witness monuments shown on the drawing in (a), above.

(E) Was the corner reestablished through lost corner proportionate methods? If so, show the method, including the directions and distances to other public land survey corners used as evidence or used for proportioning the corner location.

I, Donald Barnes, hereby certify that the corner location as identified by the corner code index was determined by me under my direction and control and that this U.S. Public Land Survey Monument Record is correct and complete to the best of my knowledge and belief.

Donald Barnes
Seal

6-9-03

Emboss

SHEET 3 OF 3

CORNER CODE

R-9

A.E. 7.08 REQUIREMENT