

U.S. PUBLIC LAND SURVEY MONUMENT RECORD

For Public Land Survey Corners in:

WI ADMINISTRATIVE CODE A-E 7.08 REQUIREMENT

T. 2 N., R. 11 E

CORNER CODE INDEX


PLYMOUTH TWP

ROCK COUNTY WI

IF AVAILABLE

ROCK COUNTY COORDINATES PREFERRED

A	1	2	3	4	5	6	7	8	9	10	11	12	13	14	15	16	17	18	19	20	21	22	23	24	25	
B																										
C	6					5					4				3						2				1	
D																										
E																										
F	1					8					9				10						11				12	
G																										
H																										
J																										
K	18					17					16				15						14				13	
L																										
M																										
N																										
O	19					20					21				22						23				24	
P																										
Q																										
R																										
S	30					29					28				27						26				25	
T																										
U																										
V																										
W	31					32					33				34						35				36	
X																										
Y																										
Z																										

PLACE MONUMENT SYMBOL  AT PROPER LOCATION ON ABOVE INDEX

North _____ Elev. _____

East _____

Hor. Datum _____ Vert. Datum _____


LATITUDE _____ ELLIPS. HT. _____

LONGITUDE _____

GPS (X) _____ TRAVERSE (X) _____

BASED ON THE FOLLOWING CONTROL:

 CORNER MONUMENT

 WITNESS MONUMENT

(a)

BEARINGS ARE BASED ON:

FIELD BOOK _____ PAGE # _____

SHEET 1 OF 4

SHOW A PLAN VIEW DRAWING DEPICTING THE CORNER MONUMENT AND SURROUNDING PHYSICAL FEATURES, INCLUDING THE EXCAVATION AREA AND DEPTH.

PLANNING & ZONING COMMITTEE ADOPTED THE ABOVE FORM ON 12/2/1982

CORNER CODE N-5

PL563

(B) Describe any record evidence, monument evidence, occupational evidence, testimonial evidence or any other material evidence you considered, and whether the monument was found or placed.

1833 HARRISON NORTH BET SEC 19 & 20

2640 QUARTER SEC COR NEAR N. EDGE OF PRAIRIE
{RED O 16 N56E 205.26' RED O 16} MARKED

3696 LEFT PRAIRIE & ENTER TIM.

4620 LEFT TIM & ENTER MARSH

5280 SET COR TO SECS 17 18 19 20 {SET POST &
RAISED MOUND OF TUBSACHS IN MARSH LAND
ROLLING PRAIRIE AS BEFORE FOR 1ST 3696'
REMAINDER WET 3RD RATE MOSTLY MARSH.

EAST ON RAND BET 17 & 20

1650 BROOK 3.3' CRS N.W.

2310 ENTER TIM & LEAVE MARSH

2640 TEMPY ¼ P

5148 LEFT TIM & ENTER MARSH

5311.68 INT. E BDY 26.4' S OF P. LAND LEVEL & WET 3RD
RATE MOSTLY MARSH - TIM. BURR O.

COR. WEST

2655.84 QUARTER SEC COR. {BURR O 16 S86W 58.74'
BURR O 19 S61W 47.52' BURR O 16 BURR O 29}
MARKED

5311.68 SEC COR

WEST ON RAND. BETW SECS 18 & 19

1320 LEFT MARSH & ENTER TIM

2640 TEMPY ¼ P

4950 LEFT TIM & ENTER PRAIRIE

5311.02 INT W. BDY 105.6' N OF P & AT POST ESTAB. COR
TO SECS 18 & 19 BEARINGS { LAND HIGH &
ROLLING 2ND RATE WITH TIMBER OF BLK O ?

COR EAST

2671.02 QUARTER SEC COR. {BLK O 14 S59E 75.9' BLK O
12 S23E 95.7' BLK O 14 BLK O 12 } MARKED

5311.02 SEC COR

NORTH BET 17 & 18

2640 QUARTER SEC COR IN MARSH SET POST & RAISED
MOUND OF ?

5280 SET POST FOR COR T SECS 7 8 17 18 IN MARSH
IMPOSSIBLE TO ESTABLISH THIS CORNER EITHER
BY A MOUND OR BEARING TREES. LAND LEVEL &
WET 34D RATE - MARSH & OF THE ??

1854 McVEAN VOL 1 PG 22 2651.22 TO N ¼ COR SEC 19 &
5290.56 TO SE COR SEC 19.

1857 CHURCH VOL 1 PG 67 VAR 7-35 2663.10 TO E ¼ COR SEC
18, VAR 7-35 2663.10 FROM E ¼ COR SEC 18 TO NE COR
SEC 18, VAR 9 2663.10 TO S ¼ COR SEC 18, & , VAR 9
2663.10 FROM S ¼ COR SEC 18 TO SW COR SEC 18.

1868 LEE VOL 1 PG 335 & MAP #3526 2669.04 TO E ¼ COR SEC
18

1868 LOCKE PG 67 EAST BETWEEN SECS 17 AND 20 VAR 7
O SET OFF 52.14' SOUTH

2677.95 INTERSECTED ¼ LINE 6.27' NORTH OF COR.
FOUND SOUTH BT AND STUMP OF WEST B.T. AND
STAKE. COR. IN LINE OF N AND S FENCE AND
2.31' SOUTH OF E & W FENCE VAR CORRECTED 5-
45

CONTINUED EAST FROM ¼ COR WITH VAR 6-25

2677.95 SET OFF 3.3' NORTH

3828 SET OFF 6.27' SOUTH

4224 SET OFF 4.95' SOUTH

4422 SET OFF 14.52' SOUTH

5347.98 INTERSECTED EAST BOUNDARY 4.29' SOUTH OF
COR. VAR CORRECTED 6-02 SEPT 10 1868
PG 66 EAST BETWEEN SECS 18 AND 19 VAR 4-50

2673.99 INTERSECTED ¼ LINE 95.04' SOUTH OF COR.

FOUND STAKE & WHERE BTs WERE DUG OR ROTTED

SHEET 1 OF 4 CORNER CODE N-5

Donald Borne

1-28-03

OUT. COR. IN LINE OF N & S FENCES AND 21.12' NORTH OF CENTER OF RR TRACK. VAR CORRECTED 6-54

SET OFF 4.95' SOUTH & RAN EAST FROM 1/4 COR WITH VAR 7

- 5336.1 INTERSECTED EAST BOUNDARY 52.14' SOUTH OF COR. COR LOST SET IT IN BY "PROPORTIONAL DISTANCE" FROM 1/4 COR 1/2 MILE EAST, SOUTH, WEST. & 1/4 COR 1 1/2 MILE NORTH THAT IS 2677.95' FROM 1/4 COR & 2670.36' FROM 1/4 COR & 2662.11' FROM 1/4 COR W AND 8011.08' FROM 1/4 COR N. COR N COR 25.41' NORTH OF E & W FENCE AND 8.25' WEST OF N & S FENCE IN CREEK SURROUNDED MONUMENT BY BOARD PILES & MOUND. VAR CORRECTED 8-01 SEPT 10 1868
PG 76 NORTH BETWEEN SECS 19 AND 20 VAR 7-40
- 2667.56 INTERSECTED 1/4 LINE 12.21' WEST OF COR. FOUND STUMP OF B.T. AND OLD STAKE. COR. IN LINE OF N & S FENCE AND IN CENTER OF HIGHWAY. VAR CORRECTED 7-24
CONTINUED NORTH FROM 1/4 COR WITH VAR 7
- 5337.92 INTERSECTED NORTH BOUNDARY 12.54' EAST OF COR. COR. LOST. SEE PAGE 66 VAR CORRECTED 7-16 SEPT 15 1868
PG 77 NORTH BETWEEN SECS 17 AND 18 VAR 7-05
- 733.92 CENTER OF RR TRACK
- 1305.81 FENCE RUNNING WEST
- 2634.06 FENCE RUNNING WEST
- 2640 SET TEMPORARY 1/4 COR COR. LOST
- 5310.36 CENTER OF DITCH RUNNING WEST
- 5340.72 INTERSECTED NORTH BOUNDARY 13.2' WEST OF COR. COR LOST. SET IT IN BY "PROPORTIONAL DISTANCE" FROM 1/4 COR. 1/2 MILE NORTH AND EAST AND 1 1/2 MILES SOUTH AND SEC COR 1 MILE WEST. THAT IS 2670.36' FROM 1/4 COR NORTH 2661.12' FROM 1/4 COR EAST 8011.0 FROM 1/4 COR SOUTH. AND 5345.34 FROM SEC COR WEST SURROUNDED MONUMENT BY PLANK PILES.
- 2670.36 SET 1/4 COR 30.36' NORTH AND 6.6' EAST OF TEMPORARY 1/4 COR. SURROUNDED MONUMENT BY STAKE AND MOUND. VAR CORRECTED 6-56. SEPT 15 1868
- 1978 BARNES VOL 5 PG 501 POINT IN DITCH IS 2678 WEST OF S 1/4 COR SEC 17 & 734 SOUTH OF CENTER OF R/R TRACKS.
- 1978 BARNES VOL 5 PG 504 DUG & FD NOTHING. THE INTERSECTION OF THE RECORD DISTANCE (LOCKE) FROM THE NORTH & THE EAST IS IN THE BOTTOM OF A LARGE DRAINAGE DITCH. (EAST SIDE)
- 1979 BARNES VOL 5 PG 561 SHOWS RECORD DISTANCES
- 2000 BARNES VOL 6 PG 455 TO A POINT IN THE BOTTOM OF THE DITCH; S89-44-13W 5342.90 FROM S 1/4 COR SEC 18 TO S 1/4 COR SEC 17, 2678.X TO S 1/4 COR SEC 17.

SET REFERENCE PIPES BUT DID NOT SET MONUMENT AT SEC CORNER BECAUSE OF THE DEPTH AND WIDTH OF THE DRAINAGE DITCH. SEARCHED AT BOTTOM OF DITCH FOR THE CUT L.S. DID NOT DIG FOR STONE. I DID NOT SEE THE CUT L.S.

*1-28-03
Donald Barnes*

PL563

C) Was the corner restored through acceptance of (1) an obliterated evidence location, or, (2) a found perpetuated location?

THE CORNER WAS RESTORED THROUGH ACCEPTANCE OF OBLITERATED EVIDENCE LOCATION BY PRORATION OF LOCKE'S REMONUMENTATION DISTANCES, WHICH IS IN HARMONY WITH HIS CALL DISTANCE TO THE CENTER OF THE R/R.

D) Describe any material discrepancy between the location of the corner as restored or reestablished and the location of that corner as previously restored or reestablished by distance and direction. Show the discrepancy on the plan view drawing under (a), above. Show the distances between the corner as previously restored or reestablished and (1) the corner as restored or reestablished, and (2) to at least 4 of the witness monuments shown on the drawing in (a), above.

(E) Was the corner reestablished through lost corner proportionate methods? If so, show the method, including the directions and distances to other public land survey corners used as evidence or used for proportioning the corner location.

I, Donald Barnes, hereby certify that the corner location as identified by the corner code index was determined by me under my direction and control and that this U.S. Public Land Survey Monument Record is correct and complete to the best of my knowledge and belief.

Donald Barnes

Seal

1-28-03

Emboss

SHEET 3 OF 4

CORNER CODE **N-5**

A.E. 7.08 REQUIREMENT

W 1/4 CDR
SEC 17

NO-10-25W 2670.00
1868 LOCKE 2670.36
1833 HARRISON 2640
1857 CHURCH 2663.10
1868 LEE 2669.04

FD ALUM

S 1/4 CDR
SEC 17

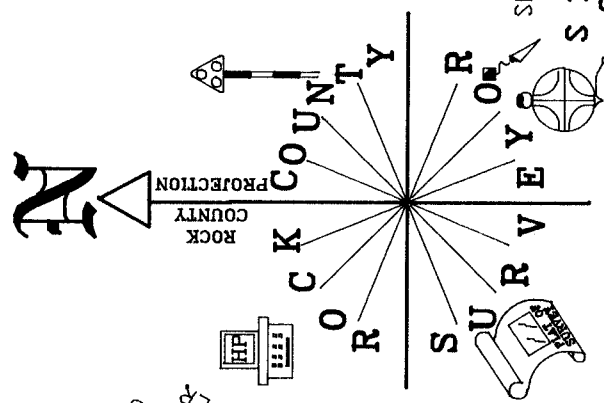
1868 733.92
NO-12W 734

S89-02-42E 2680.09 FD L.S.
1868 LOCKE 2677.95
1833 HARRISON 2655.84

S00-30-04E 2670.00
1868 LOCKE 2670.36
1833 HARRISON 2640

W 1/4 CDR
SEC 20

FD PIN



SET POLY

S 1/4 CDR
SEC 18

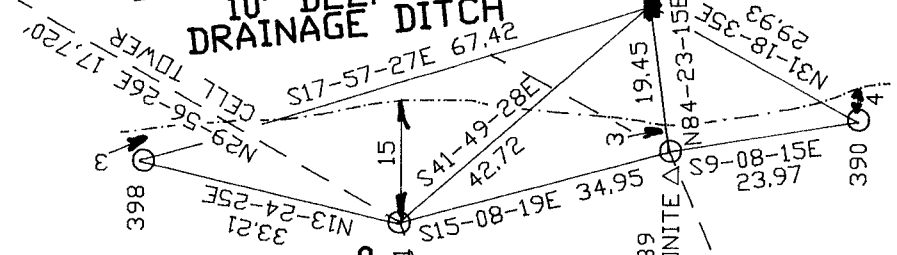
S88-30-16W 2664.22
1868 LOCKE 2662.11
1854 McVEAN 2651.22
1833 HARRISON 2640
1857 CHURCH 2663.10

OBSERVATION SHEET 261

- 3/4X24" REROD/
- PLASTIC CAP
- NO MONUMENT
- SW CDR SEC 17

FARM FIELD
N29-51-38E 17,745
CELL TOWER

10' DEEP DRAINAGE DITCH



SW CDR
SEC 17
PLYMOUTH TWP
T2N R11E

S67-05-25W 8,715'
DREDDVILLE TANK

FARM FIELD

CARSONITE POST

S67-19-05W 8,718'
DREDDVILLE TANK

SHEET 4 OF 4

Embossed Seal
Ronald Barnes
May 12 2003

N-5