

# U.S. PUBLIC LAND SURVEY MONUMENT RECORD

For Public Land Survey Corners in:

WI ADMINISTRATIVE CODE A-E 7.08 REQUIREMENT

T. 2N., R. 11E

### CORNER CODE INDEX

PLYMOUTH TWP

**ROCK COUNTY WI**

IF AVAILABLE  
ROCK COUNTY COORDINATES PREFERRED

A	1	2	3	4	5	6	7	8	9	10	11	12	13	14	15	16	17	18	19	20	21	22	23	24	25
B	6																								
C		5																							
D			4																						
E				3																					
F					2																				
G	1																								
H		8																							
I			9																						
J				10																					
K					11																				
L	18					16																			
M		17					15																		
N			18					14																	
O				19					13																
P					20					12															
Q						21					11														
R							22					10													
S								23					9												
T									24					8											
U										25					7										
V											26					6									
W												27					5								
X													28					4							
Y														29					3						
Z															30					2					

North \_\_\_\_\_ Elev. \_\_\_\_\_

East \_\_\_\_\_

Hor. Datum \_\_\_\_\_ Vert. Datum \_\_\_\_\_

LATITUDE \_\_\_\_\_ ELLIPS. HT. \_\_\_\_\_

LONGITUDE \_\_\_\_\_

GPS (X) \_\_\_\_\_ TRAVERSE (X) \_\_\_\_\_

BASED ON THE FOLLOWING CONTROL:

PLACE MONUMENT SYMBOL  AT PROPER LOCATION ON ABOVE INDEX

CORNER MONUMENT

WITNESS MONUMENT

(a)

BEARINGS ARE BASED ON:

FIELD BOOK \_\_\_\_\_ PAGE # \_\_\_\_\_

SHEET 1 OF 3

SHOW A PLAN VIEW DRAWING DEPICTING THE CORNER MONUMENT AND SURROUNDING PHYSICAL FEATURES, INCLUDING THE EXCAVATION AREA AND DEPTH.

PLANNING & ZONING COMMITTEE ADOPTED THE ABOVE FORM ON 12/2/1982

CORNER CODE L-5

P1555

(B) Describe any record evidence, monument evidence, occupational evidence, testimonial evidence or any other material evidence you considered, and whether the monument was found or placed.

1834 HARRISON NORTH BET 17 & 18

2640 QUARTER SEC COR IN MARSH SET POST & RAISED MOUND OF ?

5280 SET POST FOR COR TO SECS 7, 8, 17 & 18 IN MARSH IMPOSSIBLE TO ESTABLISH THIS CORNER EITHER BY A MOUND OR BEARING TREES. LAND LEVEL & WET 3RD RATE - MARSH & OF THE ??

1857 CHURCH VOL 1 PG 67 VAR 7-35 2663.1 TO SE & NE CORNERS SEC 18.

1868 LEE VOL 1 PG 335 & MAP #3526 FD STAKE & FLAG POLE SET BY LOCKE 2669.04 TO SE COR SEC 18 & 2657.16 TO CENTER SEC 18

1868 LOCKE PG 77 NORTH BETWEEN SECS 17 AND 18 VAR 7-05 733.92 CENTER OF RR TRACK

1305.81 FENCE RUNNING WEST

2634.06 FENCE RUNNING WEST

2640 SET TEMPORARY 1/4 COR COR. LOST

5310.36 CENTER OF DITCH RUNNING WEST

5340.72 INTERSECTED NORTH BOUNDARY 13.2' WEST OF COR. COR LOST. SET IT IN BY "PROPORTIONAL DISTANCE" FROM 1/4 COR. 1/2 MILE NORTH AND EAST AND 1 1/2 MILES SOUTH AND SEC COR 1 MILE WEST. THAT IS 2670.36' FROM 1/4 COR NORTH 2661.12' FROM 1/4 COR EAST 8011.0 FROM 1/4 COR SOUTH. AND 5345.34 FROM SEC COR WEST SURROUNDED MONUMENT BY PLANK PILES.

2670.36 SET 1/4 COR 30.36' NORTH AND 6.6' EAST OF TEMPORARY 1/4 COR. SURROUNDED MONUMENT BY STAKE AND MOUND. VAR CORRECTED 6-56. SEPT 15 1868

1899 BROWN VOL 2 PG 511 MON. 2673.99 TO NW COR SEC 17 & 1328.58 TO S 1/16<sup>TH</sup> COR OF NE 1/4 SEC 18.

1914 KERCH VOL 5 PG 561 & 578 FB K-6 PG 80

1978 BARNES VOL 5 PG 501 NO-09-17W 2671.04 TO NW COR SEC 17 & S89-02-08E 5329.37 TO E 1/4 COR SEC 17

1978 BARNES VOL 5 PG 504 DUG & FD LIMESTONE WITH IP ON EAST SIDE. REMOVED L.S. & SET ALUM. MON. REFERENCED SAME. IN LANE.

1979 BARNES VOL 5 PG 561 N85-26-20W 5339.70 TO W 1/4 COR SEC 18, N5-41-19E 2670.81 TO NE COR SEC 18, & GRID NORTH IS 5-50-35 WEST OF TRUE NORTH

1979 BARNES VOL 6 PG 1 N85-26-20W 2659.70 TO COMPUTED CENTER SEC 18 (DID NOT SEARCH FOR CENTER), & N85-26-20W 2680.18 FROM COMPUTED CENTER TO W 1/4 COR SEC 18, & N5-41-20E 2670.88 TO NE COR SEC 18.

1999 KREBS VOL 6 PG 455 S88-32-17E 5329.53 TO E 1/4 COR SEC 17

2000 BARNES VOL 6 PG 455 FD ALUM. NO-0917W 2671.00 TO NW COR SEC 17 & S89-02-08E 5329.35 TO E 1/4 COR SEC 17.

2000 KREBS MAP #7598 & 7599 FD ALUM 5329.53 TO E 1/4 COR SEC 17 & 2671.26 TO CEN SEC 17

FD ALUM. MON 0.5' DEEP & 6.5 NORTH OF TOP OF NORTH DITCH BANK.

*Donald Barnes*

SHEET 1 OF 3 CORNER CODE L-5

1-21-03

PL555

*C) Was the corner restored through acceptance of (1) an obliterated evidence location, or, (2) a found perpetuated location?*

**ACCEPTED FD ALUM. MON., WHICH PERPETUATED CUT L.S. LOCATION.**

*D) Describe any material discrepancy between the location of the corner as restored or reestablished and the location of that corner as previously restored or reestablished by distance and direction. Show the discrepancy on the plan view drawing under (a), above. Show the distances between the corner as previously restored or reestablished and (1) the corner as restored or reestablished, and (2) to at least 4 of the witness monuments shown on the drawing in (a), above.*

*(E) Was the corner reestablished through lost corner proportionate methods? If so, show the method, including the directions and distances to other public land survey corners used as evidence or used for proportioning the corner location.*

I, **Donald Barnes**, hereby certify that the corner location as identified by the corner code index was determined by me under my direction and control and that this U.S. Public Land Survey Monument Record is correct and complete to the best of my knowledge and belief.

*Donald Barnes*

Seal

*1/21/03*

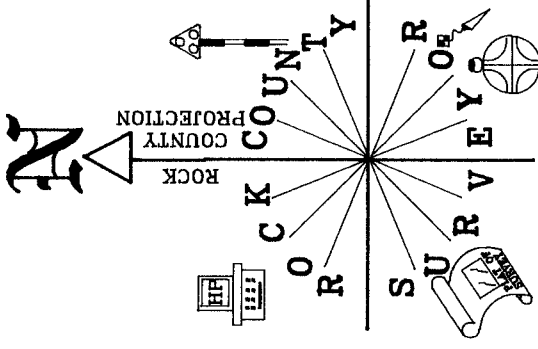
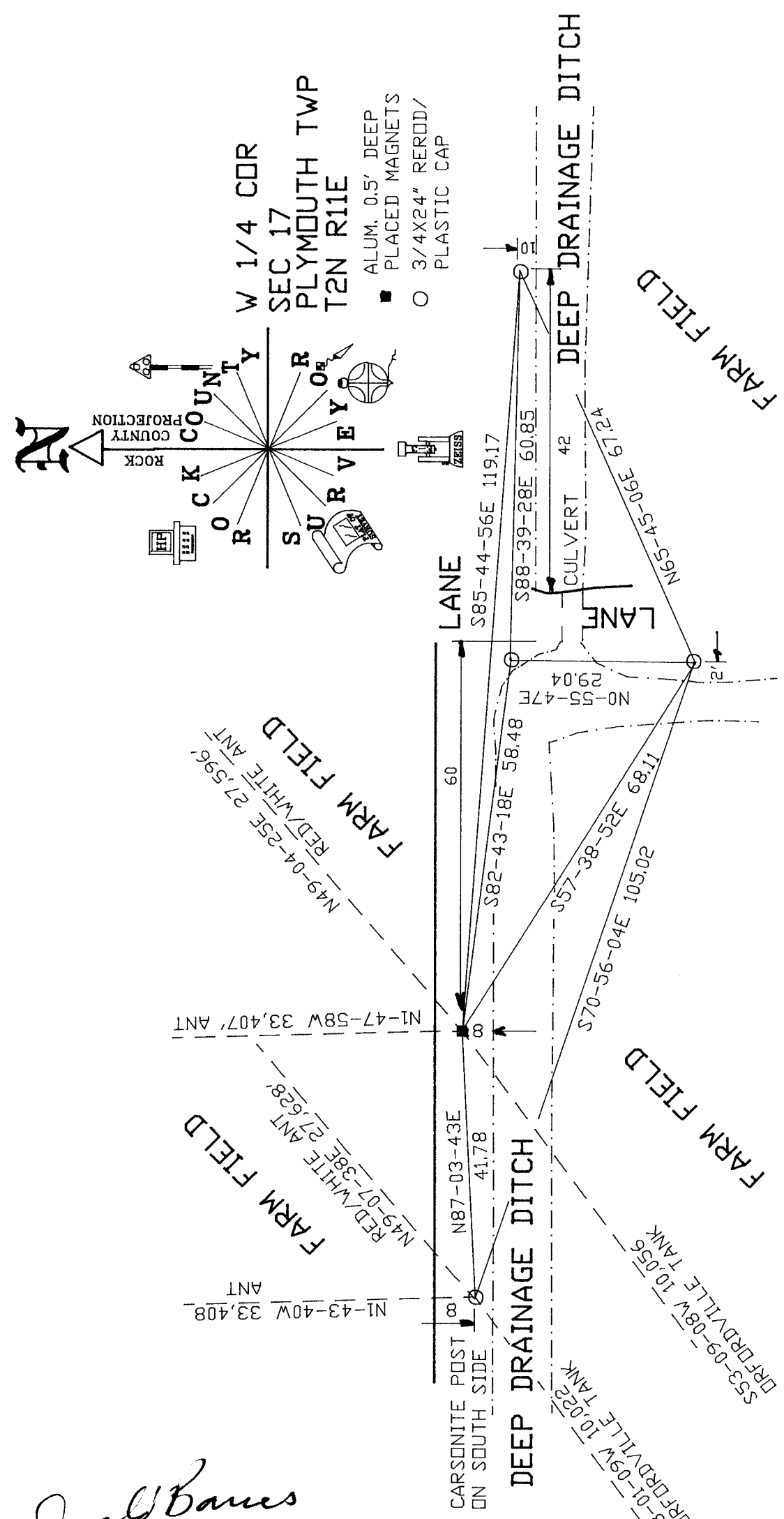
Emboss

SHEET 2 OF 3

CORNER CODE

**L-5**

A.E. 7.08 REQUIREMENT



W 1/4 COR  
 SEC 17  
 PLYMOUTH TWP  
 T2N R11E

- ALUM. 0.5' DEEP PLACED MAGNETS
- 3/4X24" REROD/ PLASTIC CAP

*Donald Barnes*  
 EMBOSSED SEAL

OBSERVATION SHEETS  
 259 & 555

SHEET 3 OF 3

3-13 -03

5