

U.S. PUBLIC LAND SURVEY MONUMENT RECORD

For Public Land Survey Corners In:
T. 2N. R. 17E.

WI ADMINISTRATIVE CODE A-E 7.08 REQUIREMENT

CORNER CODE INDEX

1	2	3	4	5	6	7	8	9	10	11	12	13	14	15	16	17	18	19	20	21	22	23	24	25	
A																									A
B																									B
C																									C
D																									D
E																									E
F																									F
G																									G
H																									H
J																									J
K																									K
L																									L
M																									M
N																									N
O																									O
P																									P
Q																									Q
R																									R
S																									S
T																									T
U																									U
V																									V
W																									W
X																									X
Y																									Y
Z																									Z

PLYMOUTH TWP
ROCK COUNTY WI

IF AVAILABLE
ROCK COUNTY COORDINATES PREFERRED

North _____ Elev. _____

East _____

Hor. Datum _____ Vert. Datum _____

LATITUDE _____ ELLIPS. HT. _____

LONGITUDE _____

GPS (X) _____ TRAVERSE (X) _____

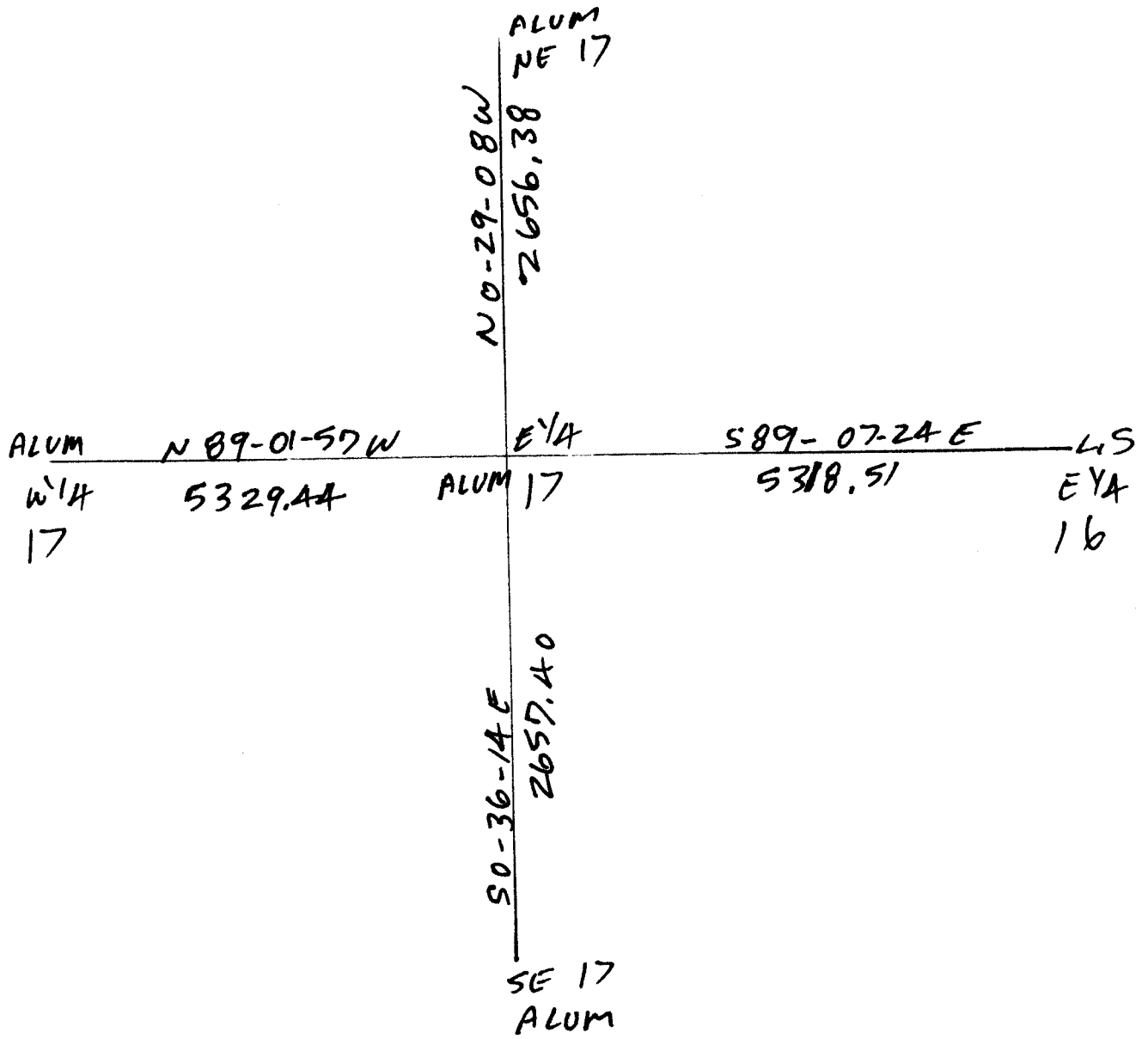
BASED ON THE FOLLOWING CONTROL:

PLACE MONUMENT SYMBOL AT PROPER LOCATION ON ABOVE INDEX

CORNER MONUMENT WITNESS MONUMENT

(a)

BEARINGS ARE BASED ON:



FIELD BOOK _____ PAGE # _____

SHEET 1 OF 1

SHOW A PLAN VIEW DRAWING DEPICTING THE CORNER MONUMENT AND SURROUNDING PHYSICAL FEATURES, INCLUDING THE EXCAVATION AREA AND DEPTH.

PLANNING & ZONING COMMITTEE ADOPTED THE ABOVE FORM ON 12/2/1982

CORNER CODE L-9

PL556

(B) Describe any record evidence, monument evidence, occupational evidence, testimonial evidence or any other material evidence you considered, and whether the monument was found or placed.

1833 HARRISON NORTH BET 16 & 17
2640 QUARTER SEC COR IN MARSH POST & RAISED MOUND
4158 BROOK 6.6' CRS S.E.
4587 LEFT MARSH & ENTER TIM.
5280 COR TO SECS 8, 9, 16, 17 {W.O. 24 N39E 128.04' W.O. 36 N19W 118.80' BURR O 24 S71W 235.62' BURR O 18 S5E 100.32' LAND MOSTLY LEVEL & WET 3RD RATE MARSH.
1865 LOCKE VOL 1 PG 228 FD OLD STAKE VAR 6-15 TO NW COR SEC 16.
1868 LOCKE PG 84 NORTH BETWEEN SECS 16 & 17 VAR 7-32
2457.18 CENTER OF RR TRACK
2640 SET TEMPORARY 1/4 COR COR LOST.
3488.1 CENTER OF BROOK 7.92' WIDE
3656.4 CENTER OF BROOK 7.92' WIDE
5311.02 INTERSECTED NORTH BOUNDARY AT COR.
2655.51 SET 1/4 COR 15.51' NORTH OF TEMPORARY 1/4 COR SURROUNDED MONUMENT WITH STAKES AND MOUND SEPT 16, 1868
1873 RUGER VOL 2 PG 121 STONE MON. 2648.25 TO NE COR SEC 17 & VAR 5-20 2653.53 TO CENTER OF SEC 17.
1873 RUGER VOL 2 PG 111 STONE MON. VAR 7-00 2648.25 TO NW COR SEC 16 & SOUTHERLY 138.27 TO R/R
1974 LEE VOL 5 PG 9 SET ALUM. & REFERENCED SAME. DUG & FD CUT STONE BROKEN SET 1" PIPE 3' DEEP.
1978 BARNES VOL 5 PG 501 NO-29-12W 2656.44 TO NW COR SEC 16
1999 KREBS VOL 6 PG 455 N88-32-17W 2659.27 TO CENTER OF SEC 17, SO-06-21E 2657.49 TO SE COR SEC 17, & NO-00-36W 2656.24 TO NE COR SEC 17.
2000 BARNES VOL 6 PG 455 NO-29-14W 2656.44 TO NE COR SEC 17 & SO-36-11E 2657.49 TO SE COR SEC 17.
2000 KREBS MAP #7598 FD ALUM N88-32-18W 2658.27 TO GEN SEC 17, N88-32-18W 5329.53 TO W 1/4 COR SEC 17, & SO-06-21E 2657.49 TO SE COR SEC 17

FD ALUM. MON 0.6' DEEP & 2' WEST OF CENTER OF PVMT. TOP IS BROKE OFF.

C) Was the corner restored through acceptance of (1) an obliterated evidence location, or, (2) a found perpetuated location?

ACCEPTED ALUM. MON., WHICH PERPETUATED OUT L.S.

D) Describe any material discrepancy between the location of the corner as restored or reestablished and the location of that corner as previously restored or reestablished by distance and direction. Show the discrepancy on the plan view drawing under (a), above. Show the distances between the corner as previously restored or reestablished and (1) the corner as restored or reestablished, and (2) to at least 4 of the witness monuments shown on the drawing in (a), above.

I, Donald Barnes, hereby certify that the corner location as identified by the corner code index was determined by me under my direction and control and that this U.S. Public Land Survey Monument Record is correct and complete to the best of my knowledge and belief.

Seal

Donald Barnes

Emboss

May 12 2003

SHEET 1 OF 1

CORNER CODE L-9

A.E. 7.08 REQUIREMENT