

U.S. PUBLIC LAND SURVEY MONUMENT RECORD

For Public Land Survey Corners in:

WI ADMINISTRATIVE CODE A-E 7.08 REQUIREMENT

T. 2 N., R. 11 E

CORNER CODE INDEX

A	1	2	3	4	5	6	7	8	9	10	11	12	13	14	15	16	17	18	19	20	21	22	23	24	25
B																									
C	6					5				4					3						2				1
D																									
E																									
F																									
G	1					8				9					10						11				12
H																									
J																									
K																									
L	18									11					16						14				13
M																									
N																									
O																									
P	19									20					21						22				24
Q																									
R																									
S																									
T	30									29					28						27				25
U																									
V																									
W																									
X	31									32					33						34				36
Y																									
Z																									

PLYMOUTH TWP
ROCK COUNTY WI

IF AVAILABLE
ROCK COUNTY COORDINATES PREFERRED

North _____ Elev. _____

East _____

Hor. Datum _____ Vert. Datum _____

LATITUDE _____ ELLIPS. HT. _____


LONGITUDE _____

GPS (X) _____ TRAVERSE (X) _____

BASED ON THE FOLLOWING CONTROL:

PLACE MONUMENT SYMBOL  AT PROPER LOCATION ON ABOVE INDEX

 CORNER MONUMENT

 WITNESS MONUMENT

(a)

BEARINGS ARE BASED ON:

OBSERVATION SHEET 3, 259, 13, 31, 800
265, 543,

FIELD BOOK _____ PAGE # _____

SHEET 1 OF 3

SHOW A PLAN VIEW DRAWING DEPICTING THE CORNER MONUMENT AND SURROUNDING PHYSICAL FEATURES, INCLUDING THE EXCAVATION AREA AND DEPTH.

PLANNING & ZONING COMMITTEE ADOPTED THE ABOVE FORM ON 12/2/1982

CORNER CODE T-5

P1543

(B) Describe any record evidence, monument evidence, occupational evidence, testimonial evidence or any other material evidence you considered, and whether the monument was found or placed.

- 1833 HARRISON NORTH BET 17 & 18
- 2640 QUARTER SEC COR IN MARSH SET POST & RAISED MOUND OF ?
- 5280 SET POST FOR COR T SECS 7 8 17 18 IN MARSH IMPOSSIBLE TO ESTABLISH THIS CORNER EITHER BY A MOUND OR BEARING TREES. LAND LEVEL & WET 34D RATE - MARSH & OF THE ??
EAST BET 8 & 17 ON RAND
- 2640 TEMPY 1/4 P
- 3234 LEFT MARSH & ENTER TIM
- 5291.88 INT. E BDY 12.54' N OF P LEVEL 1ST 1/2 MILE SAME LAST 1/2 ROLLING 2ND RATE WITH BURR O TIMBER
COR WEST
- 2645.94 QUARTER SEC COR {BURR O 12 S14E 373.56'
BURR O 20 S5E 395.34' BURR O 12 BURR O 10} MARKED
- 5291.88 SEC COR
WEST ON RAND. BET 7 & 18
- 2640 TEMPY 1/4 P
- 5314.98 INT. W. BDY 148.5' N OF P. LAND WET & LEVEL 3RD RATE MARSH
COR EAST
- 2674.98 QUARTER SEC COR. POST & SMALL MOUND OF TUBSUCKS
- 5314.98 SEC COR
NORTH BET SECS 7 & 8
- 858 LEFT MARSH & ENTER TIMBER
- 1609.74 WD 16
- 2640 QUARTER SEC COR. {W.O. 19 S89E 67.32' W.O 20. S88W 58.74'
- 5280 COR TO SECS 5 6 7 8 {ASPEN 16 S63 11.22'
ASPEN 10 S33W 13.2' ASPEN 15 N54W 34.98'
WHITE O 13 N52E 8.58' LAND BOLLING 1ST RATE WITH W.O. ASPEN ELM WALNUT HICKY LYNN
CHERRY HAZEL
- 1857 CHURCH VOL 1 PG 66 STAKE IN THE MARSH NO BEARINGS.
VAR 7 2659.8 TO S 1/4 COR SEC 7. S 1/4 SEC 7 ON LINE WITH SE & SW CORN SEC 7.
- 1857 CHURCH VOL 1 PG 67 VAR 7-35 2663.1 TO E 1/4 COR SEC 18. E 1/4 COR SEC 18 IS MID WAY & ON LINE WITH SE & NE CORNERS OF SEC 18.
- 1862 TWP RD REC BK 1 PG 43
- 1862 CHURCH TWP RD REC BK 1 PG 43 COMMENCING AT THE SEC COR BETWEEN SEC 9 & 10 ON THE NORTH LINE OF SAID SECTIONS AND RUNNING THENCE SOUTH ON SEC LINE TO SOUTH LINE OF SAID SEC; THENCE WEST ON SEC LINE TO THE SW COR OF SEC 8.
- 1868 LOOKE PG 77 NORTH BETWEEN SECS 17 AND 18 VAR 7-05
- 733.92 CENTER OF RR TRACK
- 1305.81 FENCE RUNNING WEST
- 2634.06 FENCE RUNNING WEST
- 2640 SET TEMPORARY 1/4 COR COR. LOST
- 5310.36 CENTER OF DITCH RUNNING WEST
- 5340.72 INTERSECTED NORTH BOUNDARY 13.2' WEST OF COR. COR LOST. SET IT IN BY "PROPORTIONAL DISTANCE" FROM 1/4 COR. 1/2 MILE NORTH AND EAST AND 1 1/2 MILES SOUTH AND SEC COR 1 MILE WEST. THAT IS 2670.36' FROM 1/4' COR NORTH 2661.12' FROM 1/4 COR EAST 8011.08' FROM 1/4 COR SOUTH. AND 5345.34 FROM SEC COR WEST SURROUNDED MONUMENT BY PLANK PILES.

Donald Burns
1/05/03

PL543

2670.36 SET ¼ COR 30.36' NORTH AND 6.6' EAST OF
TEMPORARY ¼ COR. SURROUNDED MONUMENT BY
STAKE AND MOUND. VAR CORRECTED 6-56. SEPT
15 1868
PG 78 NORTH BETWEEN SECS 7 & 8 VAR 7-05
O SET OFF 13.2' WEST
990 SET OFF 11.55'
2670.36 INTERSECTED ¼ LINE AT COR. FOUND STUMPS OF
B.T.S AND STONE SET ON COR. BY SELF. (SEE CO.
SURVEYORS RECORD SEC 8) VAR CORRECTED 7-07
CONTINUED NORTH FROM ¼ COR WITH VAR 7-15
O SET OFF 7.26' WEST'
5326.2 INTERSECTED NORTH BOUNDARY AT COR VAR
CORRECTED 7-24 SEPT 15 1868
PG 82 EAST BETWEEN SECS 7 AND 18 VAR 7-52
2640 SET TEMPORARY ¼ COR
5345.34 INTERSECTED EAST BOUNDARY 86.46' SOUTH OF
COR. COR LOST SEE PAGE 77 VAR CORRECTED 8-48
2690.16 SET ¼ COR 50.16' EAST AND 43.23' NORTH OF
TEMPORARY COR. SURROUNDED MONUMENT BY
PLANK PILES. SEP 16 1868
PG 83 EAST BETWEEN SECS 8 AND 17 VAR 6-15
O SET OFF 46.86' SOUTH
1369.5 FENCE RUNNING NORTH
2661.12 INTERSECTED ¼ LINE AT COR. FOUND B.TS EAST
BT IS 816E AND WEST BT IS 395.34' DIST. COR
2.97' SOUTH OF E & W FENCE AND 26.07' WEST OF
FENCE RUNNING NORTH AND NEAR THE END OF A
SOD FENCE RUNNING WEST VAR CORRECTED 5-14
CONTINUED EAST FROM ¼ COR WITH VAR 6-35
5313.33 INTERSECTED EAST BOUNDARY 11.22' NORTH OF
COR. VAR CORRECTED 6-20 SEPT 16. 1868
1869 RUBER VOL 2 PG 9 STONE MON SET BY LOOKE. VAR 8-40
2657.16 TO S ¼ COR SEC 7 & VAR 6-08 2669.04 TO E ¼ COR SEC 7
1899 BROWN VOL 2 PG 511 MON. 2673.99 TO E ¼ COR SEC 18
1957 8TH MAP #6990 STATES NOTHING ABOUT MON.
1978 BARNES VOL 5 PG 501 NO-21-34W 2668.73 TO E ¼ COR SEC 7,
888-22-07E 2661.70 TO S ¼ COR SEC 8, 80-09-17E 2671.04 TO
E ¼ COR SEC 18.
1978 BARNES VOL 5 PG 503 FD OUT L.S. TOP BROKE OFF. 2.5' DEEP
FD BOTTOM HALF LEANING AT A 45 DEGREE ANGLE. SET ALUM. 1
¼' DEEP & PLACED 2X24" IRON PIPE HORIZONTALLY ON SOUTH
SIDE. REFERENCED SAME. MON IS SOUTH & EAST OF DITCHES.
1979 BARNES VOL 5 PG 561 85-41-19W 2670.81 TO E ¼ COR SEC 18
1979 BARNES VOL 6 PG 1 N5-29-02E 2668.73 TO E ¼ COR SEC 7,
85-41-20W 2670.88 TO E ¼ COR SEC 18. PROJECT NORTH IS 5-
50-35 WEST OF TRUE NORTH.
1989 BARNES VOL 6 PG 402 NO-59-30W 2668.82 TO E ¼ COR SEC 17
1997 SCHROEDER GSM VOL 20 PG 56 STATE NOTHING ABOUT MON.
2000 BARNES VOL 6 PG 455 80-09-17E 2671.00 TO E ¼ COR SEC 18,
888-22-11E 2661.69 TO S ¼ COR SEC 8, & NO-21-36W 2668.75
TO E ¼ COR SEC 7.

FD ALUM. MON. / CARBONITE POST

C) Was the corner restored through acceptance of (1) an obliterated evidence location, or, (2) a found perpetuated location?

ACCEPTED FD ALUM. MON., WHICH PERPETUATES OUT L.S.

I, Donald Barnes, hereby certify that the corner location as identified by the corner code index was determined by me under my direction and control and that this U.S. Public Land Survey Monument Record is correct and complete to the best of my knowledge and belief.

Seal
Donald Barnes
Emboss

SHEET 2 OF 3

1/04/03

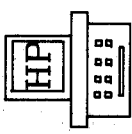
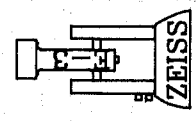
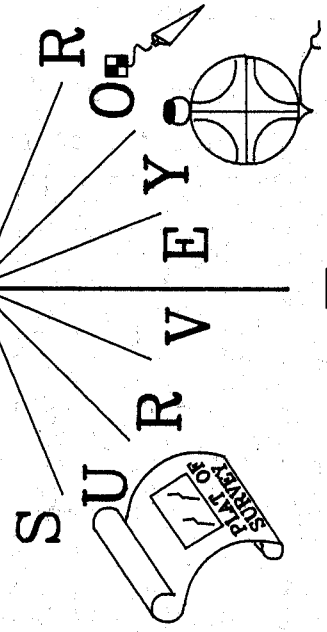
CORNER CODE J-5

A.E. 7.08 REQUIREMENT

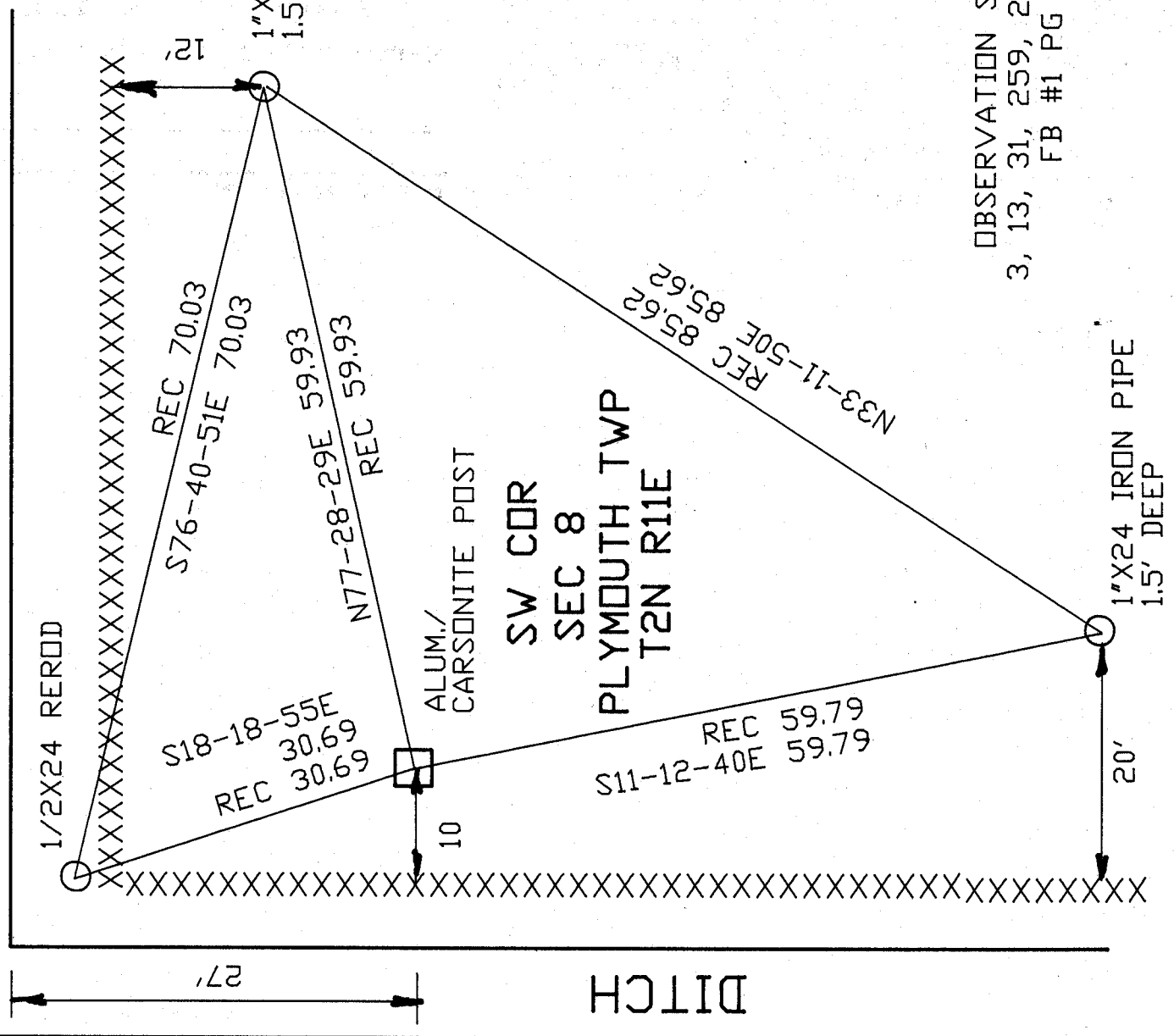
N

ROCK COUNTY PROJECTION

ROCK COUNTY SURVEY



DITCH



OBSERVATION SHEETS
3, 13, 31, 259, 265, & 904
FB #1 PG 47

SHEET 3 OF 3

Donald Brown
EMBOSSSED
SEAL
1/05/03

J-5