

U.S. PUBLIC LAND SURVEY MONUMENT RECORD

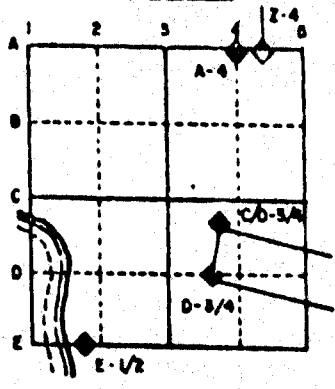
For Public Land Survey Corners in the
T. 2N., R. 10E.

CORNER CODE INDEX

	1	2	3	4	5	6	7	8	9	10	11	12	13	14	15	16	17	18	19	20	21	22	23	24	25
A																									
B																									
C	6																								
D		5																							
E			4																						
F				3																					
G																									
H	7																								
I		6																							
J			5																						
K				4																					
L																									
M																									
N																									
O																									
P	8																								
Q		20																							
R			21																						
S				22																					
T					23																				
U						24																			
V																									
W																									
X																									
Y	30																								
Z		29																							
			28																						
				27																					
					26																				
						25																			
							36																		
								35																	
									34																
										33															
											32														
												31													

PLACE MONUMENT SYMBOL (◊) AT PROPER LOCATION ON ABOVE INDEX

EXAMPLE



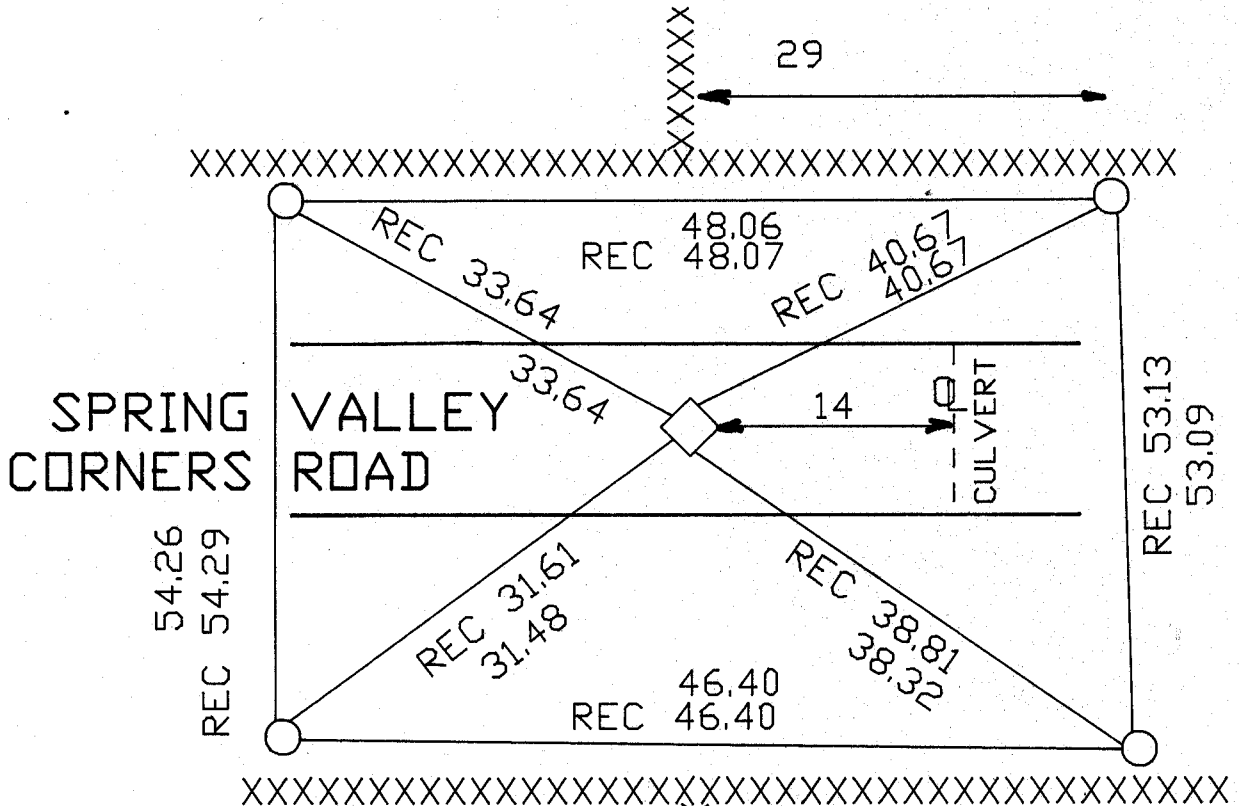
SPRING VALLEY TWP
ROCK COUNTY WI

IF AVAILABLE
STATE PLANE COORDINATES

North (Y) _____ Elevation (Z) _____
 East (X) _____ Zone _____
 Horizontal Datum _____ Vertical Datum _____

◊ CORNER MONUMENT ○ WITNESS MONUMENT

BEARINGS ARE BASED ON: ASSUMED



FB #3 PG 37
 5/8" X 23" PIN
 FOUND ~~PINE~~ & REPLACED
 WITH ALUM. MON.
 MONUMENT IS 1' SOUTH OF
 CENTER OF PAVEMENT.

MICROFILMED
SHEET 1 OF 1

CORNER CODE: E15

(B) Describe any record evidence, monument evidence, occupational evidence, testimonial evidence or any other material evidence you considered, and whether the monument was found or placed.

1834 MILLER SET 1/4 SEC POST, BURR OAK 16 N2W 41.58', BUR OAK 22 S20E 33. 2653.20 TO THE SE AND SW CORNERS OF SECTION 3.

1855 CHURCH VOL 1 PG 43 STAKE CORRECT WITH FIELD NOTES. SHOWS 2658.48 TO SW CORNER OF SECTION 3. USED CORNER TO SUBDIVIDE SECTION 3. 2678.28 FROM W 1/4 TO CENTER OF SECTION 3.

1965(?) BATTERMAN JR. VOL 4 PG 213 FOUND 4" SQUARE HH STANDING ON END. REFERENCED CORNER.

THE DISTANCE FROM THE S 1/4 CORNER TO THE SW CORNER OF SECTION 3 IS 2675.96 AND THE DISTANCE TO THE SE CORNER OF SECTION 3 IS 2678.24. FOUND ~~PIPE~~ ^{PIPE} AS REFERENCED IN VOL 4 PG 213. REPLACED PIPE WITH ALUMINUM MONUMENT. FOUND GRANIT HH AT 30" DEEP, PLACED ALUMINUM MONUMENT ON TOP.

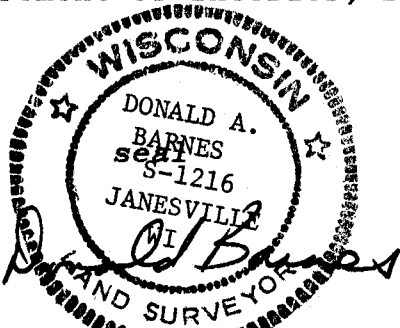
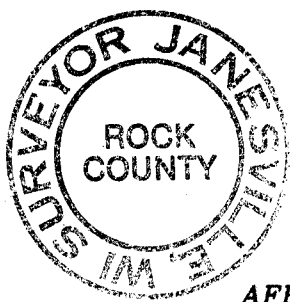
C) Was the corner restored through acceptance of (1) an obliterated evidence location, or, (2) a found perpetuated location?

ACCEPTED FOUND PERPETUATED CORNER.

D) Describe any material discrepancy between the location of the corner as restored or reestablished and the location of that corner as previously restored or reestablished by distance and direction. Show the discrepancy on the plan view drawing under (a), above. Show the distances between the corner as previously restored or reestablished and (1) the corner as restored or reestablished, and (2) to at least 4 of the witness monuments shown on the drawing in (a), above.

(E) Was the corner reestablished through lost corner proportionate methods? If so, show the method, including the directions and distances to other public land survey corners used as evidence or used for proportioning the corner location.

I, Donald Barnes, hereby certify that the corner points as identified by the corner code index were, in a field survey on, October 5, 1990, established, re-established, monumented, re-monumented, recovered or restored as expressed below and in conformance with the regulations and rules as required in the current manual of survey instructions of the United States Department of Interior, Bureau of Land Management.



AFFIX YOUR SURVEYOR SEAL

COUNTY SURVEYOR FILING DATA

Date of computer entry _____

Date microfilmed _____

Number of included sheets 0
CORNER CODE

E 15