

# U.S. PUBLIC LAND SURVEY MONUMENT RECORD

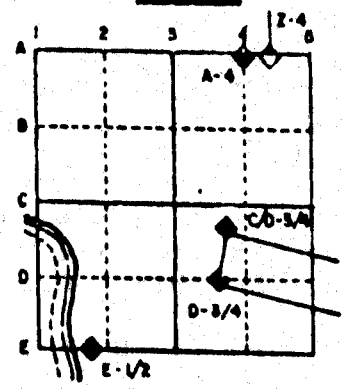
For Public Land Survey Corners in the  
T. 2 N., R. 10 E.

## CORNER CODE INDEX

	1	2	3	4	5	6	7	8	9	10	11	12	13	14	15	16	17	18	19	20	21	22	23	24	25
A																									
B																									
C	6																								
D																									
E																									
F																									
G																									
H	7	8	9	10	11	12	13	14	15	16	17	18	19	20	21	22	23	24	25	26	27	28	29	30	
I																									
J																									
K																									
L	18	17	16	15	14	13	12	11	10	9	8	7	6	5	4	3	2	1							
M																									
N																									
O																									
P	19	20	21	22	23	24	25	26	27	28	29	30	31	32	33	34	35	36							
Q																									
R																									
S																									
T	30	29	28	27	26	25	24	23	22	21	20	19	18	17	16	15	14	13	12	11	10	9	8	7	
U																									
V																									
W																									
X																									
Y	31	32	33	34	35	36																			
Z																									

PLACE MONUMENT SYMBOL (◆) AT PROPER LOCATION ON ABOVE INDEX

### EXAMPLE



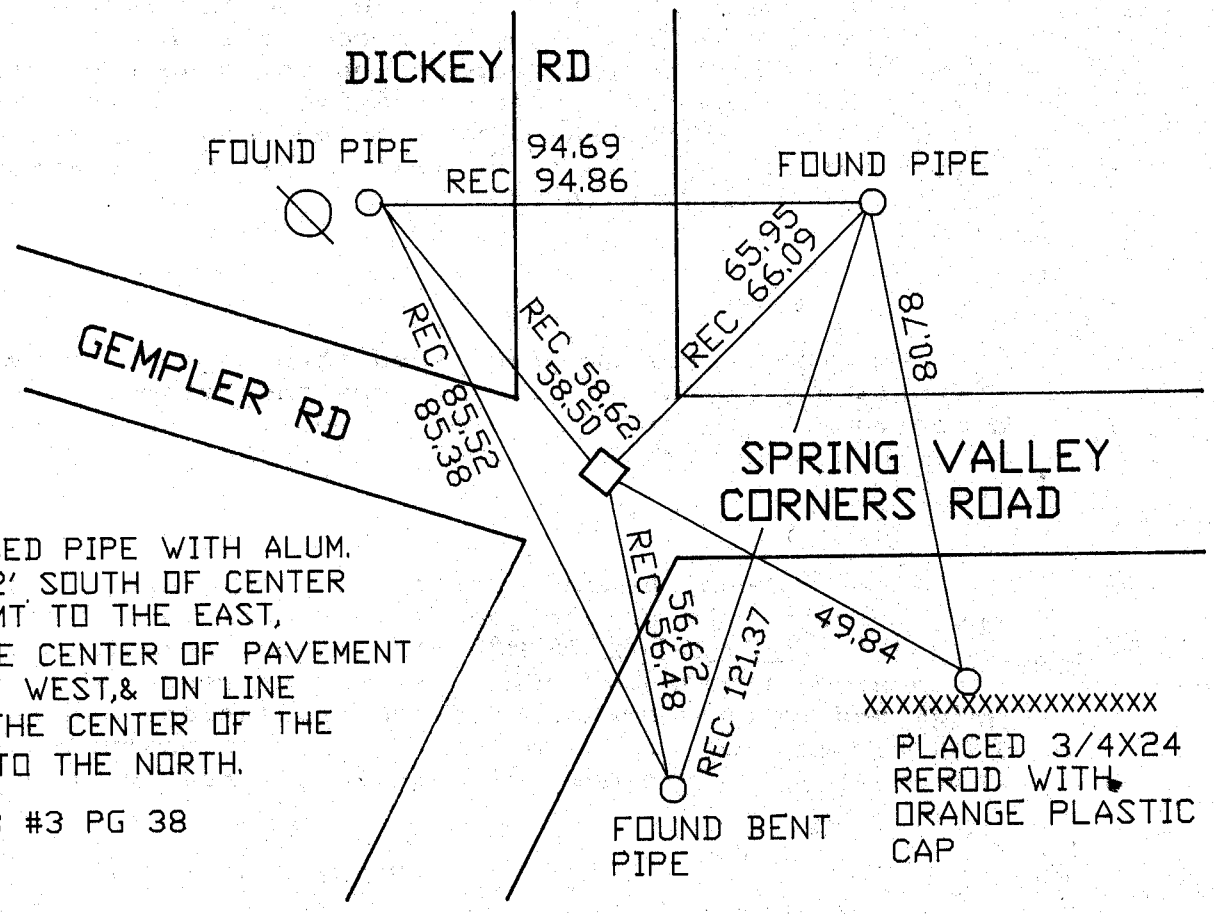
SPRING VALLEY TWP  
ROCK COUNTY WI

### IF AVAILABLE STATE PLANE COORDINATES

North (Y) \_\_\_\_\_ Elev. (Z) \_\_\_\_\_  
 East (X) \_\_\_\_\_ Zone \_\_\_\_\_  
 Hor. Datum \_\_\_\_\_ Vert. Datum \_\_\_\_\_

◆ CORNER MONUMENT      ○ WITNESS MONUMENT

BEARINGS ARE BASED ON:



REPLACED PIPE WITH ALUM. MON. 2' SOUTH OF CENTER OF PVMT TO THE EAST, ON LINE CENTER OF PAVEMENT TO THE WEST, & ON LINE WITH THE CENTER OF THE PVMT TO THE NORTH.

FB #3 PG 38

XXXXXXXXXXXXXXXXXXXX  
 PLACED 3/4X24 REROD WITH ORANGE PLASTIC CAP

MICROFILMED

SHEET \_\_\_\_\_ OF \_\_\_\_\_

CORNER CODE: E13

(B) Describe any record evidence, monument evidence, occupational evidence, testimonial evidence or any other material evidence you considered, and whether the monument was found or placed.

1834 MILLER SET POST COR OF 3,4,9,10 BUR OAK 10 N56W 6.6, BUR OAK 12 S76E 21.12'.

1855 CHURCH VOL 1 PG 41 SHOWS THE FOLLOWING BEARING OBJECTS:

S.E. CORNER OF A WELL N 1/2 W 67.32'  
SW CORNER OF A STORE HOUSE S68 1/4W 132'  
12 BURR OAK S65 1/4W 37.62  
12 BURR OAK S69 1/2 E 36.96  
13 BLACK OAK 14 N54W 440.22'  
13 BUR OAK 14 S51 1/2 E 79.86'

ALSO CALLS FOR A DISTANCE OF 2640 TO THE E 1/4 CORNER OF SECTION 4.

1855 CHURCH VOL 1 PG 44 SHOWS 2654.52 TO E 1/4 CORNER OF SECTION 9.

1855 CHURCH VOL 1 PG 43 STAKE CORRECT WITH FIELD NOTES. SHOWS 2658.48 TO S 1/4 CORNER OF SECTION 3.

1867 LOCKE VOL 1 PG 288 FOUND REMAINS OF BTS AND WELL TAKEN BY CHURCH. SET PIECE OF CROWBAR 2 1/2 FT LONG SURROUNDED BY 3 LARGE FLAT LIMESTONES. SHOWS 2647.52 TO E 1/4 CORNER OF SECTION 4 AND 2607.99 TO THE S 1/4 CORNER OF SECTION 4.

1879 RUGER VOL 2 PG 264 FOUND IRON BAR AT CORNER. SHOWS 2605.68 TO S 1/4 CORNER OF SECTION 4.

1965 BATTERMAN JR. VOL 4 PG 214 SHOWS TIES AND STATES THAT DUG AND FOUND NOTHING AND SHIMEALL SET BY PRORATION.

1972 SHIMEALL VOL 2 PG 264 1X24 I PIPE SET BY SHIMEALL

FOUND 1" PIPE THAT IS IN HARMONY WITH TIES AS SHOWN IN VOL 4 PG 214. REPLACED IT WITH AN ALUMINUM MONUMENT. THE DISTANCE FROM THE CORNER TO THE S 1/4 CORNER OF SECTION 3 IS 2675.96 AND THE DISTANCE TO THE W 1/4 CORNER OF SECTION 3 IS 2649.46.

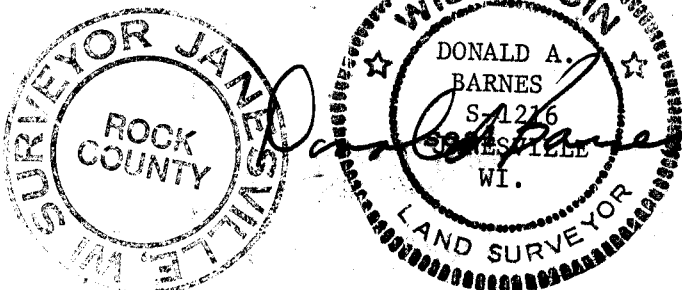
C) Was the corner restored through acceptance of (1) an obliterated evidence location, or, (2) a found perpetuated location?

ACCEPTED FOUND PERPETUATED LOCATION.

D) Describe any material discrepancy between the location of the corner as restored or reestablished and the location of that corner as previously restored or reestablished by distance and direction. Show the discrepancy on the plan view drawing under (a), above. Show the distances between the corner as previously restored or reestablished and (1) the corner as restored or reestablished, and (2) to at least 4 of the witness monuments shown on the drawing in (a), above.

(E) Was the corner reestablished through lost corner proportionate methods? If so, show the method, including the directions and distances to other public land survey corners used as evidence or used for proportioning the corner location.

I, Donald Barnes, hereby certify that the corner points as identified by the corner code index were, in a field survey on, Donald Barnes Oct 25, 1990 established, re-established, monumented, re-monumented, recovered or restored as expressed below and in conformance with the regulations and rules as required in the current manual of survey instructions of the United States Department of Interior, Bureau of Land Management.



COUNTY SURVEYOR FILING DATA

Date of computer entry \_\_\_\_\_