

U.S. PUBLIC LAND SURVEY MONUMENT RECORD

For Public Land Survey Corners in:

WI ADMINISTRATIVE CODE A-E 7.08 REQUIREMENT

T. 2N., R. 10E

CORNER CODE INDEX

A	1	2	3	4	5	6	7	8	9	10	11	12	13	14	15	16	17	18	19	20	21	22	23	24	25
B																									
C	6					5				A				3			2							1	
D																									
E																									
F																									
G	1					8				9				10			11							12	
H																									
I																									
J																									
K	13					11				16				15			14							13	
L																									
M																									
N																									
O																									
P	19					20				21				22			23						24		
Q																									
R																									
S	30					29				28				27			26						25		
T																									
U																									
V																									
W																									
X	31					32				33				34			35						36		
Y																									
Z																									

SPRING VALLEY TWP

ROCK COUNTY WI

IF AVAILABLE
ROCK COUNTY COORDINATES PREFERRED

North _____ Elev. _____

East _____

Hor. Datum _____ Vert. Datum _____

LATITUDE _____ ELLIPS. HT. _____

LONGITUDE _____

GPS (X) _____ TRAVERSE (X) _____

BASED ON THE FOLLOWING CONTROL:

PLACE MONUMENT SYMBOL AT PROPER LOCATION ON ABOVE INDEX

CORNER MONUMENT

WITNESS MONUMENT

(a)

BEARINGS ARE BASED ON:

FIELD BOOK _____ PAGE # _____

SHEET 1 OF 3

SHOW A PLAN VIEW DRAWING DEPICTING THE CORNER MONUMENT AND SURROUNDING PHYSICAL FEATURES, INCLUDING THE EXCAVATION AREA AND DEPTH.

PLANNING & ZONING COMMITTEE ADOPTED THE ABOVE FORM ON 12/2/1982

CORNER CODE E-1

SP521 NW-7

(B) Describe any record evidence, monument evidence, occupational evidence, testimonial evidence or any other material evidence you considered, and whether the monument was found or placed.

- 1833 MILLER WEST RANDOM BETWEEN SECS 6 & 7
 - 1782 ENTER MARSH CIRCULAR(?)
 - 5016 LEAVE SAME
 - 5346 INTERSECT RANGE LINE 1119.36 NORTH POST EAST CORRECTED BETWEEN SECS 6 & 7 SET POST COR OF SECS 6 & 7, YEL O. 14 N12E 36.3', BUR O 12 S77E 29.7'
 - 2706 SET 1/4 SEC POST BUR O 8 S48E 320.76', BUR O 12 N19W 167.64'
 - 4243.8 BUR O 12 IN DIA.
 - 5346 SEC COR.
- 1867 LOCKE MAP #4458 FOUND S.B. TREE & OLD STAKE. SET STAKE SURROUNDED BY 3 LIMESTONES. 2729.1 TO W 1/4 COR SEC 6 & CALLS FOR GOVERNMENT DISTANCE OF 2752.2 TO S 1/4 COR SEC 6.
- 1867 LOCKE VOL 1 PG 304 SAME AS ABOVE.
- 1879 RUGER VOL 2 PG 265 FOUND STAKE SURROUNDED BY STONES ALSO FOUND STUMP OF SE BT & WHERE STUMP OF NE BT HAD BEEN DUG UP. 2562.78 VAR 6-44 TO N 1/4 COR SEC 7, 2621.52 VAR 5-55 TO W 1/4 COR SEC 7.
- 1937 SUNNY VOL 3 PG 355 DUG 4X6X3.5 DEEP HOLE AND FOUND NO MONUMENT.
- 1982 BARNES VOL 6 PG 242 SHOWS RECORD DISTANCES.
- 1982 BARNES VOL 6 PG 268 DUG & FOUND NOTHING. DUG FROM N/S FENCE ON THE WEST SIDE OF STH 140 3 TO THE WEST AND 8 TO THE EAST, 4 SOUTH OF E/W FENCE ON EAST SIDE OF ROAD, 8 NORTH OF SAME E/W FENCE ON EAST SIDE OF ROAD. THE E/W FENCE IS 117 NORTH OF A TRAVERSE POINT. THE TRAVERSE IS 4 EAST OF THE WEST EDGE OF PAVEMENT, 2537.79 TO S 1/4 COR SEC 6 AND 5227.02 TO NW COR SEC 6.

CORNER IS IN PAVING PROJECT AREA. I DID NOT INSTALL A MONUMENT BECAUSE OF THE CONSTRUCTION.

C) Was the corner restored through acceptance of (1) an obliterated evidence location, or, (2) a found perpetuated location? PLACED CORNER ON LINE WITH SE AND E 1/4 CORNERS OF SEC 12 T2N R9E. SINCE RUGER ESTABLISHED THE W 1/4 CORNER OF SEC 7 AT MID POINT BETWEEN THE NW AND SW CORNERS OF SECTION 7, I USED THE DISTANCE FROM THE SW CORNER TO THE W 1/4 CORNER OF SECTION 7 TO ESTABLISH THE POSITION OF THE CORNER. THIS IS IN HARMONY WITH RECORD DISTANCES AND OCCUPATION LINES.

D) Describe any material discrepancy between the location of the corner as restored or reestablished and the location of that corner as previously restored or reestablished by distance and direction. Show the discrepancy on the plan view drawing under (a), above. Show the distances between the corner as previously restored or reestablished and (1) the corner as restored or reestablished, and (2) to at least 4 of the witness monuments shown on the drawing in (a), above.

(E) Was the corner reestablished through lost corner proportionate methods? If so, show the method, including the directions and distances to other public land survey corners used as evidence or used for proportioning the corner location.

I, Donald Barnes, hereby certify that the corner location as identified by the corner code index was determined by me under by direction and control and that this U.S. Public Land Survey Monument Record is correct and complete to the best of my knowledge and belief.

seal
Donald Barnes
AUGUST 23, 1996
emboss

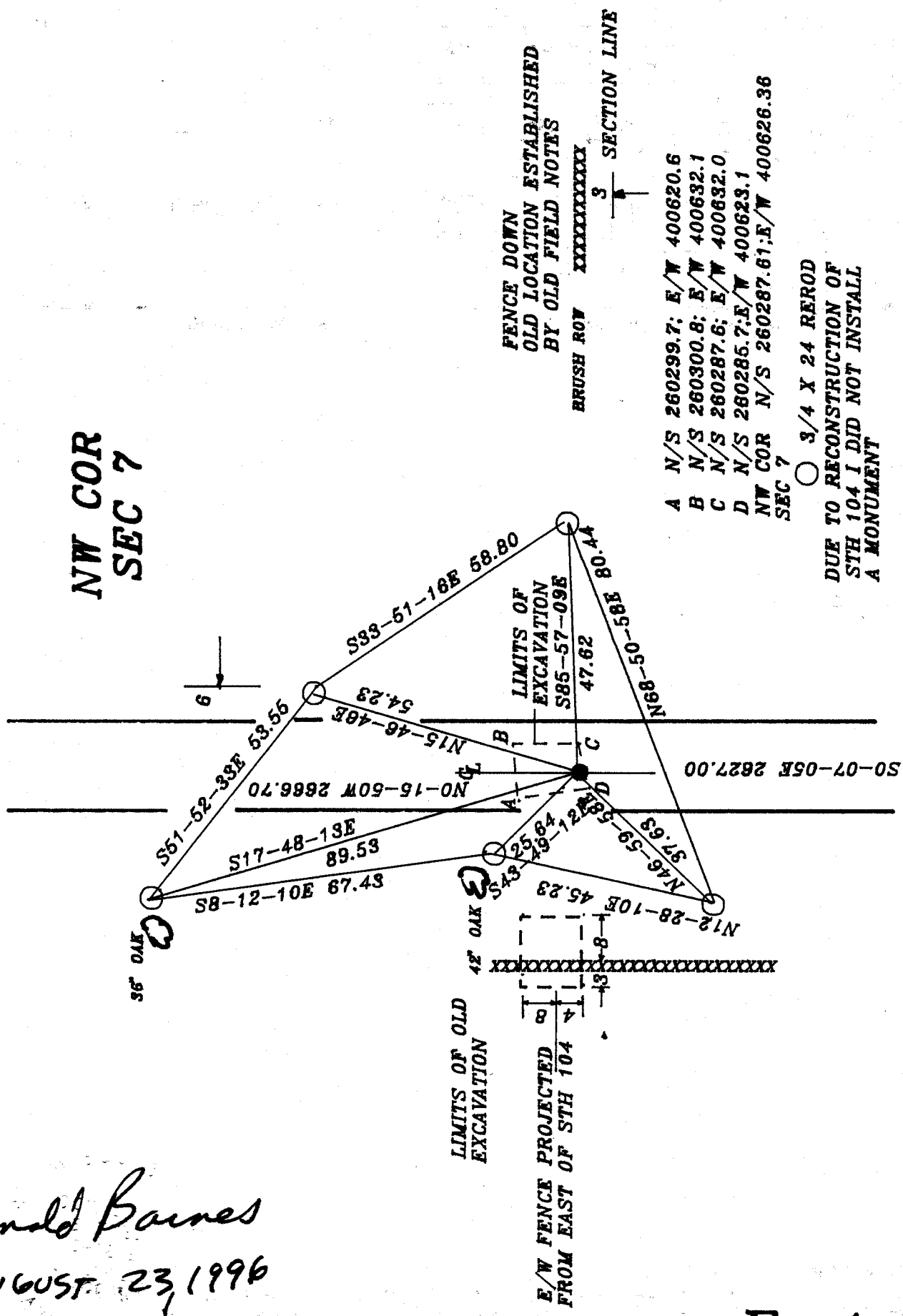
Number of included sheets _____

CORNER CODE

A-E 7.08 REQUIREMENT

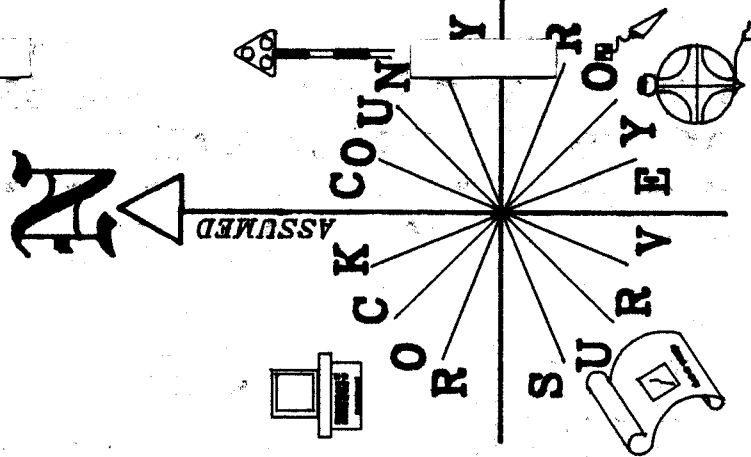
E-1

Donald Barnes
 AUGUST 23, 1996



**NW COR
 SEC 7**

STH 104



- A N/S 260299.7; E/W 400620.6
 - B N/S 260300.8; E/W 400632.1
 - C N/S 260287.6; E/W 400632.0
 - D N/S 260285.7; E/W 400623.1
 - NW COR N/S 260287.61; E/W 400626.36
- SEC 7

○ 3/4 X 24 REROD
 DUE TO RECONSTRUCTION OF
 STH 104 I DID NOT INSTALL
 A MONUMENT

OBSERVATION SHEET #5

SPRING VALLEY TWP

T2N R10E

LOCKE 50.16
S89-23-44E 49.96

NW COR

FD POLY

DRIG 2640

NE COR

LEE 1873 VAR 6-05 1/2
LEE 1873 2913.90
BARNES 1987 2991.12
BARNES 1987 S89-03-01E
MULLETT 9/11/1833 2991.12

LOCKE 1867 2866.38 X
BARNES 1987 2867.07 RUGER 1882 2629.44

S88-21-41E

LOCKE 1867 2442 VAR 7-15

LOCKE 7 5105.1

NO-15-16W 2446.69

DRIG PLAT 2422.20

LOCKE 1867 2729.10

POSSIBLY 1 CHAIN ERROR

LOCKE 1867 VAR 7-45

LOCKE 1867 2702.96

LOCKE 1867 (?) 2636.83

LOCKE 1867 2666.70

NO-15-50V 2666.70

LOCKE 1867 2621.52

RUGER 1879 VAR 5-55

MULLETT 9/6/1833 2640

MULLETT 9/6/1833 2640

MULLETT 9/6/1833 2640

MULLETT 9/6/1833 2640

MULLETT 9/6/1833 2640

MULLETT 9/6/1833 2640

MULLETT 9/6/1833 2640

MULLETT 9/6/1833 2640

MULLETT 9/6/1833 2640

MULLETT 9/6/1833 2640

MULLETT 9/6/1833 2640

MULLETT 9/6/1833 2640

MULLETT 9/6/1833 2640

MULLETT 9/6/1833 2640

MULLETT 9/6/1833 2640

MULLETT 9/6/1833 2640

MULLETT 9/6/1833 2640

MULLETT 9/6/1833 2640

MULLETT 9/6/1833 2640

MULLETT 9/6/1833 2640

MULLETT 9/6/1833 2640

MULLETT 9/6/1833 2640

MULLETT 9/6/1833 2640

MULLETT 9/6/1833 2640

MULLETT 9/6/1833 2640

MULLETT 9/6/1833 2640

MULLETT 9/6/1833 2640

MULLETT 9/6/1833 2640

MULLETT 9/6/1833 2640

MULLETT 9/6/1833 2640

MULLETT 9/6/1833 2640

MULLETT 9/6/1833 2640

MULLETT 9/6/1833 2640

MULLETT 9/6/1833 2640

MULLETT 9/6/1833 2640

MULLETT 9/6/1833 2640

MULLETT 9/6/1833 2640

DRIG 198 NORTH OF POST >

MULLETT 9/11/1833 957.00

DRIG 957.0

BARNES 1982 989.49

BARNES 1987 SO-41-14E 989.55

SO-01-25E 989.48

SEC 12

FD ALUM. MON.

FD ALUM. MON.

FD ALUM. MON.

FD ALUM. MON.

FD C.I.

SW COR

FD ALUM. MON.

DRIG 59.4 NORTH OF POST >
MILLER 3/18/1834 1160.28
NO-04-22W 1148.56

T2N R9E

SEC 13

CENTER

SEC 6

SEC 7

E 1/4 COR

NE COR

E 1/4 COR

SE COR

X POSITION COMPUTED FROM
OLD FIELD DATA.

Donald Barnes
AUGUST 23, 1996