

U.S. PUBLIC LAND SURVEY MONUMENT RECORD

For Public Land Survey Corners in the

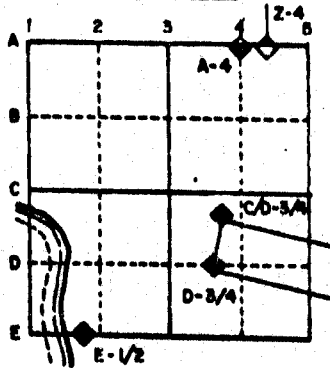
T. 2 N., R. 10 E.

CORNER CODE INDEX

	1	2	3	4	5	6	7	8	9	10	11	12	13	14	15	16	17	18	19	20	21	22	23	24	25
A																									
B																									
C	6																								
D		5																							
E			4																						
F				3																					
G																									
H																									
I																									
J																									
K																									
L																									
M																									
N																									
O																									
P																									
Q																									
R																									
S																									
T																									
U																									
V																									
W																									
X																									
Y																									
Z																									

PLACE MONUMENT SYMBOL (◆) AT PROPER LOCATION ON ABOVE INDEX

EXAMPLE



SPRING VALLEY TWP
ROCK COUNTY WI

IF AVAILABLE STATE PLANE COORDINATES

North (Y) _____ Eleve. (Z) _____
 East (X) _____ Zone _____
 Hor. Datum _____ Vert. Datum _____

a.)

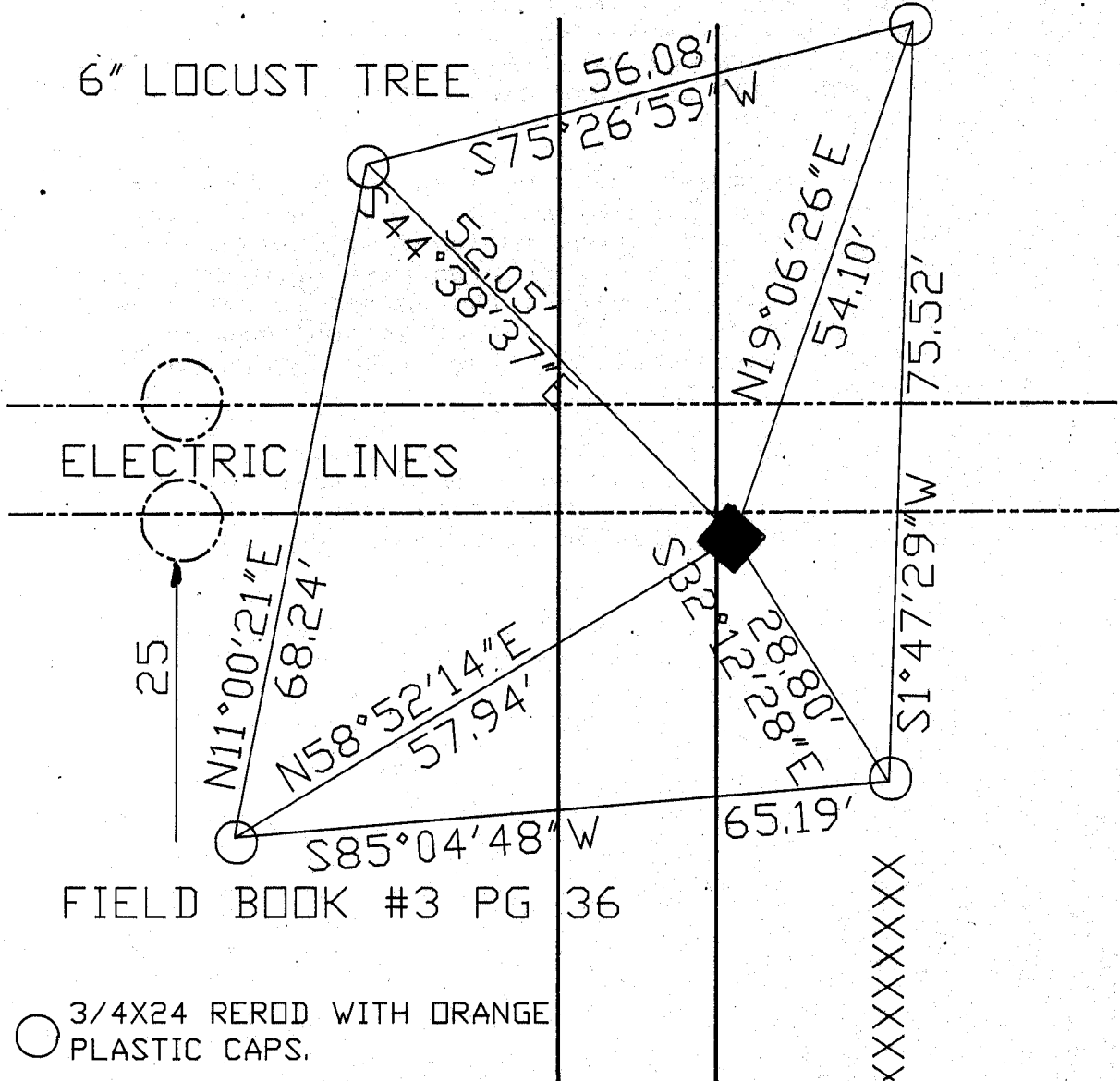
◆ CORNER MONUMENT

○ WITNESS MONUMENT

DICKEY RD

8" CEDAR

6" LOCUST TREE



○ 3/4X24 REROD WITH ORANGE PLASTIC CAPS.

MICROFILMED

SHEET ___ OF ___

CORNER CODE: C13

(B) Describe any record evidence, monument evidence, occupational evidence, testimonial evidence or any other material evidence you considered, and whether the monument was found or placed.

1834 MILLER SET 1/4 SECTION POST BUR OAK 12 S64W 45.54', BUR OAK 12 N N47E 116.82. 2434.74' TO THE NW CORNER OF SECTION 3.

1855 CHURCH VOL 1 PG 41 STATES NOTHING ABOUT THE CORNER. SHOWS THE FOLLOWING:

2588.52 TO CENTER OF SECTION 4
5177.04 TO W 1/4 CORNER OF SECTION 4
2640 TO SE CORNER OF SECTION 4

1855 CHURCH VOL 1 PG 43 CORRECT WITH FIELD NOTES. SHOWS THE FOLLOWING:

2678.28 TO CENTER OF SECTION 3
5356.56 TO E 1/4 CORNER OF SECTION 3

1861 RUGER VOL 1 PG 150 STATES NOTHING ABOUT CORNER. SHOWS THE FOLLOWING:

2680.26 TO CENTER OF SECTION 3
5360.52 TO E 1/4 CORNER OF SECTION 3
2375.34 TO NW CORNER OF SECTION 3

1867 LOCKE VOL 1 PG 288 FOUND S. BT AND OLD STAKE. PLACED STAKE AND SURROUNDED BY 3 LIMESTONES. SHOWS THE FOLLOWING:

2647.52 TO SE CORNER OF SECTION 4
2381.28 TO NE CORNER OF SECTION 4
2588.52 TO CENTER OF SECTION 4.

SHOWS THAT THE CORNER IS NOT ON A STRAIGHT LINE BETWEEN THE NW AND SW CORNERS OF SECTION 3.

DUG AND FOUND NOTHING.

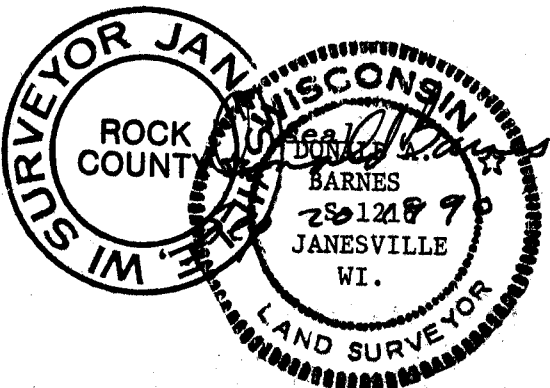
C) Was the corner restored through acceptance of (1) an obliterated evidence location, or, (2) a found perpetuated location?

ESTABLISHED CORNER THROUGH ACCEPTANCE OF OBLITERATED EVIDENCE LOCATION. LOCKE'S 1867 SHOWS THAT THE CORNER IS NOT ON A STRAIGHT LINE BETWEEN THE SE AND NE CORNERS OF SECTION 4. THE N/S POSITION WAS COMPUTED BY PRORATING LOCKE'S 1867 DISTANCES BETWEEN THE SE AND NE CORNERS OF SECTION 4. THE E/W POSITION WAS DETERMINED BY USING THE MEAN OF RUGER AND CHURCH'S DISTANCES TO THE E 1/4 CORNER OF SECTION 3.

D) Describe any material discrepancy between the location of the corner as restored or reestablished and the location of that corner as previously restored or reestablished by distance and direction. Show the discrepancy on the plan view drawing under (a), above. Show the distances between the corner as previously restored or reestablished and (1) the corner as restored or reestablished, and (2) to at least 4 of the witness monuments shown on the drawing in (a), above.

(E) Was the corner reestablished through lost corner proportionate methods? If so, show the method, including the directions and distances to other public land survey corners used as evidence or used for proportioning the corner location.
NO

I, Donald Barnes, hereby certify that the corner points as identified by the corner code index were, in a field survey on, September 20, 1990, established, re-established, monumented, re-monumented, recovered or restored as expressed below and in conformance with the regulations and rules as required in the current manual of survey instructions of the United States Department of Interior, Bureau of Land Management.



COUNTY SURVEYOR FILING DATA

Date of computer entry _____

Date microfilmed _____

Number of included sheets _____

CORNER CODE

C13