

# U.S. PUBLIC LAND SURVEY MONUMENT RECORD

For Public Land Survey Corners in:

WI ADMINISTRATIVE CODE A-E 7.08 REQUIREMENT

T. 2 N., R. 10 E

### CORNER CODE INDEX

A	1	2	3	4	5	6	7	8	9	10	11	12	13	14	15	16	17	18	19	20	21	22	23	24	25
B	◆	6				5				4					3						2				1
C																									
D																									
E																									
F																									
G																									
H																									
I																									
J																									
K																									
L																									
M																									
N																									
O																									
P																									
Q																									
R																									
S																									
T																									
U																									
V																									
W																									
X																									
Y																									
Z																									

SPRING Valley TWP  
ROCK COUNTY WI

IF AVAILABLE  
ROCK COUNTY COORDINATES PREFERRED

North \_\_\_\_\_ Elev. \_\_\_\_\_

East \_\_\_\_\_

Hor. Datum \_\_\_\_\_ Vert. Datum \_\_\_\_\_

LATITUDE \_\_\_\_\_ ELLIPS. HT. \_\_\_\_\_

LONGITUDE \_\_\_\_\_

GPS (X) \_\_\_\_\_ TRAVERSE (X) \_\_\_\_\_

BASED ON THE FOLLOWING CONTROL:  
\_\_\_\_\_

PLACE MONUMENT SYMBOL **◆** AT PROPER LOCATION ON ABOVE INDEX

**◆** CORNER MONUMENT

**○** WITNESS MONUMENT

(a)

BEARINGS ARE BASED ON:

FIELD BOOK \_\_\_\_\_ PAGE # \_\_\_\_\_

SHEET 1 OF 3

SHOW A PLAN VIEW DRAWING DEPICTING THE CORNER MONUMENT AND SURROUNDING PHYSICAL FEATURES, INCLUDING THE EXCAVATION AREA AND DEPTH.

PLANNING & ZONING COMMITTEE ADOPTED THE ABOVE FORM ON 12/2/1982

CORNER CODE C1

SP514 W1/4 SEC 6

(B) Describe any record evidence, monument evidence, occupational evidence, testimonial evidence or any other material evidence you considered, and whether the monument was found or placed.

- 1837 ORIGINAL GOVERNMENT SURVEYOR ESTABLISHED THE E 1/4 COR SEC 12 T2N R9E. THERE ARE NO FIELD NOTES STATING THE ORIGINAL SURVEYOR ESTABLISHED THE W 1/4 COR SEC 6 T2N R10E. THE ORIGINAL GOVERNMENT PLAT NOTES A DISTANCE TO THE CORNER SOUTH AND NORTH.
- 1867 LOCKE MAP #4458 FOUND G.B.T. & OLD STAKE SET STAKE SURROUNDED BY 3 HH. 2442' VAR 7-15 TO NW COR SEC 6, 2729.1' TO SW COR SEC 6, 2702.96 VAR 7-45, & 5349.56 VAR 7-45 TO E 1/4 COR SEC 6.
- 1867 LOCKE VOL 1 PG 304 SAME INFORMATION AS ABOVE.
- 1937 SUNNY VOL 3 PG 355 DUN 4X6X3.5 DEEP FOUND NO MONUMENTS.
- 1982 BARNES VOL 6 PG 268 A POINT 2703.4 FROM FENCE NEAR CENTER OF SEC 6 & 5350.43 FROM EAST 1/4 COR SEC 6, & 2444.65 FROM NW COR SEC 6 IS 3' EAST OF CENTER OF PAVEMENT. DUG HOLE WITH EAST EDGE 4 EAST OF ABOVE POINT, WEST EDGE 7 OF ABOVE POINT, NORTH EDGE 3' NORTH OF ABOVE POINT, & SOUTH EDGE 4 SOUTH OF ABOVE POINT. DUG 2' DEEP & FOUND OLD ASPHALT ROAD. DUG 3 BELOW OLD ROAD & FOUND NOTHING.

DUG 5' DEEP HOLE. FOUND OLD ASPHALT ROAD AND NOTHING ELSE. DUE TO PROPOSED CONSTRUCTION OF STH 104 I DID NOT INSTALL A MONUMENT.

C) Was the corner restored through acceptance of (1) an obliterated evidence location, or, (2) a found perpetuated location?

D) Describe any material discrepancy between the location of the corner as restored or reestablished and the location of that corner as previously restored or reestablished by distance and direction. Show the discrepancy on the plan view drawing under (a), above. Show the distances between the corner as previously restored or reestablished and (1) the corner as restored or reestablished, and (2) to at least 4 of the witness monuments shown on the drawing in (a), above.

(E) Was the corner reestablished through lost corner proportionate methods? If so, show the method, including the directions and distances to other public land survey corners used as evidence or used for proportioning the corner location.

PLACED CORNER ON LINE WITH EAST 1/4 AND NE CORNERS OF SECTION 12 T2N R9E AND PRORATION WITH ORIGINAL GOVERNMENT PLAT. THIS IS IN HARMONY WITH LOCKE'S DISTANCES.

I, Donald Barnes, hereby certify that the corner location as identified by the corner code index was determined by me under by direction and control and that this U.S. Public Land Survey Monument Record is correct and complete to the best of my knowledge and belief.

*Donald Barnes*  
seal  
AUGUST 23, 1996

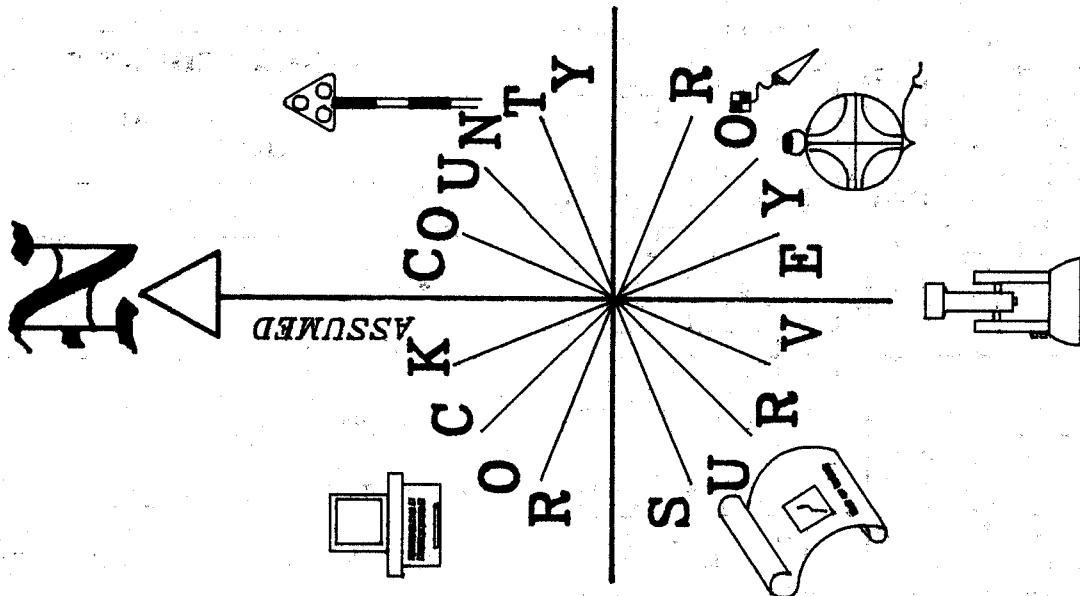
Number of included sheets \_\_\_\_\_

emboss

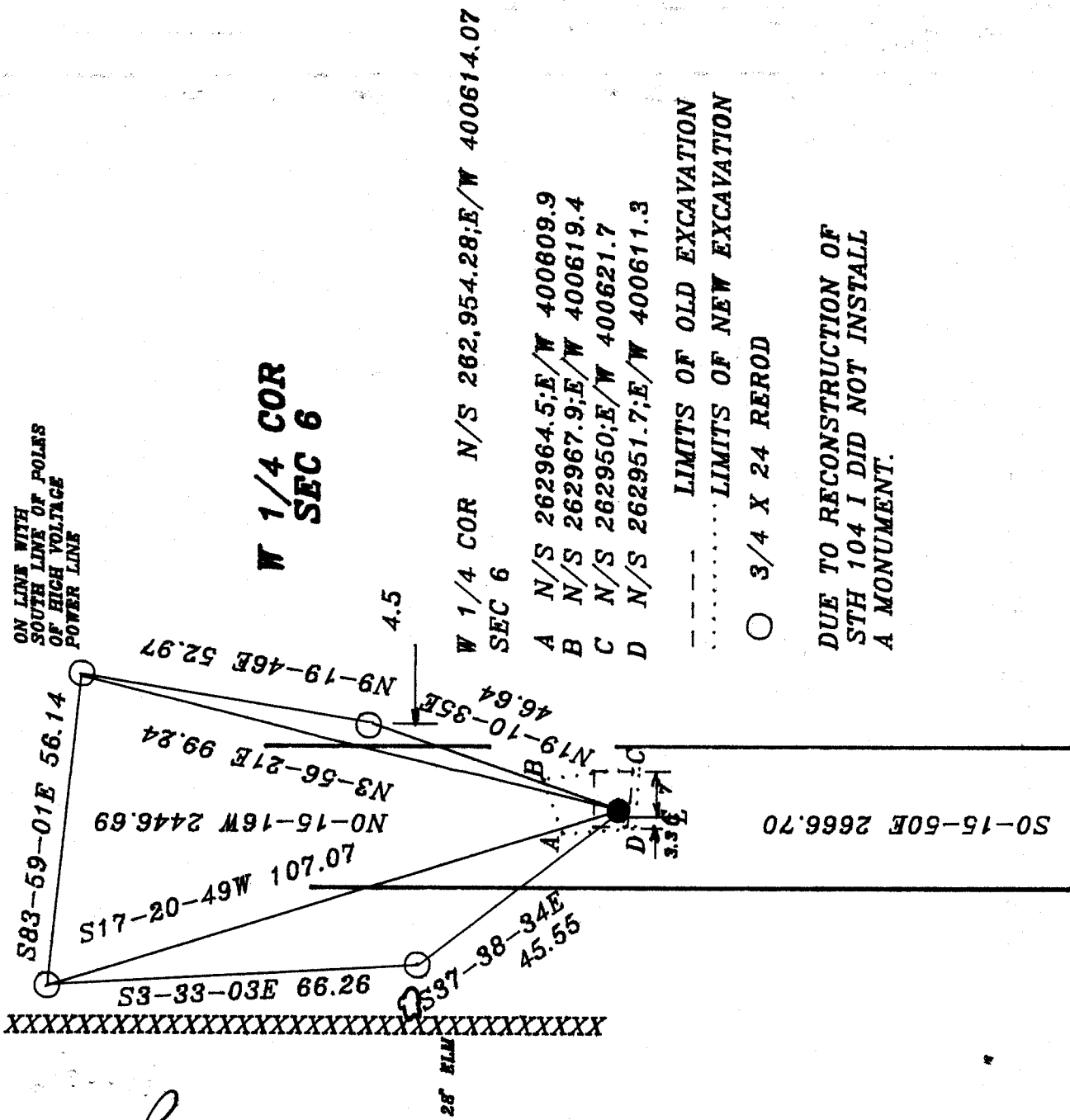
CORNER CODE

A-E 7.08 REQUIREMENT

CI



**STH 104**



*Donald Barnes*  
 AUGUST 23, 1996

C-1

**NW COR**  
FD POLY

LEE 1873 VAR 6-05 1/2  
LEE 1873 2913.90  
BARNES 1987 2991.12  
BARNES 1987 589-03-01E  
MULLETT 9/11/1833 2991.12

LOCKE 50.16  
S89-23-44E 49.96

DRIG 2640

**NE COR**

FD ALUM. MON.  
ORIG 198 NORTH OF POST >

MULLETT 9/11/1833 957.00  
ORIG 957.0  
BARNES 1982 989.49  
BARNES 1987 S0-41-14E 989.55  
S0-01-25E 989.48

SEC 12

FD ALUM. MON.

NO-24-41W 2633.09  
MULLETT 9/6/1833 2640  
1982 N3-39-13W 2633.05

LOCKE 1867 2442 VAR 7-15  
S88-21-41E  
2867.12  
CHURCH 1855 2336.40  
CHURCH 1855 2325.84

LOCKE 1867 2866.38  
BARNES 1987 2867.07

RUGER 1882 2629.44

CHURCH 1855 2310.66

CHURCH 1855 2301.42  
ORIG 2422.2

FD ALUM. MON.

NO-08-51W 2633.12  
MULLETT 9/6/1833 2640  
1982 N3-23-09W 2633.12

LOCKE 1867 2729.10  
POSSIBLY 1 CHAIN ERROR  
LOCKE 1867 5105.1  
NO-15-16W 2446.69  
ORIG PLAT 2422.20  
LOCKE 1867 VAR 7-45  
LOCKE 1867 2702.96  
LOCKE 1867 (?) 2636.83

**CENTER**

N89-14-58E 5353.61  
LOCKE 1867 5349.56  
LOCKE 1867 2646.60

SEC 6

T2N R9E

FD ALUM. MON.

MILLER 3/18/1834 1119.36  
ORIG 181.5 NORTH OF POST >  
NO-08-51W 1142.28

XXXXXXXXXXXX

30

XXXXXXXXXXXX

W 1/4 CD 7

NO-05-43W 2633.54  
MULLETT 9/6/1833 2640  
1982 N3-23-09W 2633.12

RUGER 1879 VAR 6-44  
RUGER 1879 2562.78  
MILLER 3/18/1834 2706.00  
N88-49-04E 2525.32  
RUGER 1879 2621.52  
RUGER 1879 VAR 5-55  
RUGER 1879 5243.04  
RUGER NO-07-05W 2627.00  
RUGER 1879 1310.76  
RUGER 1879 2587.20  
RUGER 1879 2615.75

RUGER 1879 5270.1  
RUGER 1879 2628.78

RUGER 1879 2651.22  
RUGER 1879 VAR 6-20  
MILLER 3/18/1834 2640.00  
N89-17-25E 2654.84  
RUGER 1879 5214.0

RUGER 1879 2642.64

N89-07-37E 5232.25

RUGER 1879 5221.26

RUGER 1879 2634.06

LEE 1868 2679.6

LEE 1868 VAR 7-200

RUGER 1879 5242.99

RUGER 1879 2627.24

LEE 1868 2655.84

LOCKE 1867 3-40 2650.56

ORIG 2640

N3-28-59E 2657.26

**NE COR**

FD ALUM. MON.

NO-11-01W 2626.74  
MULLETT 9/6/1833 2640

LEE 1868 2612.28  
RUGER 1879 2621.52  
1313.5 COMBS  
NO-11-36W 2627.00  
310.76 RUGER 1879 1310.76  
RUGER 1879 2631.42  
RUGER 1879 2641.32

RUGER 1879 5242.99  
RUGER 1879 2627.24  
LEE 1868 2655.84

MILLER 3/18/1834 2640  
RUGER 1879 2621.2  
RUGER 1879 VAR 5-35

LOCKE 1866 2631.42

RUGER 1879 2628.12

NI-15-16W 2632.88

**E 1/4 COR**

FD C.I.  
**SW COR**

FD ALUM. MON.  
ORIG 59.4 NORTH OF POST >  
MILLER 3/18/1834 1160.28  
NO-04-22W 1148.56

X POSITION COMPUTED FROM  
OLD FIELD DATA.

Donald Barnes  
AUGUST 23, 1995

C-1