

# U.S. PUBLIC LAND SURVEY MONUMENT RECORD

For Public Land Survey Corners in:

WI ADMINISTRATIVE CODE A-E 7.08 REQUIREMENT

T. 2N., R. 9E

CORNER CODE INDEX

1	2	3	4	5	6	7	8	9	10	11	12	13	14	15	16	17	18	19	20	21	22	23	24	25
A																								
B	6					5				A				3						2			1	
C																								
D																								
E																								
F																								
G	7					8				9				10						11			12	
H																								
I																								
J																								
K	18					17				16				15						14			13	
L																								
M																								
N																								
O																								
P	19					20				21				22						23			24	
Q																								
R																								
S	30					29				28				27						26			25	
T																								
U																								
V																								
W																								
X	31					32				33				34						35			36	
Y																								
Z																								

Decatur TWP  
 -ROCK COUNTY WI  
 Green IF AVAILABLE  
 ROCK COUNTY COORDINATES PREFERRED

North \_\_\_\_\_ Elev. \_\_\_\_\_

East \_\_\_\_\_

Hor. Datum \_\_\_\_\_ Vert. Datum \_\_\_\_\_

LATITUDE \_\_\_\_\_ ELLIPS. HT. \_\_\_\_\_

LONGITUDE \_\_\_\_\_

GPS (X) \_\_\_\_\_ TRAVERSE (X) \_\_\_\_\_

BASED ON THE FOLLOWING CONTROL:

PLACE MONUMENT SYMBOL  AT PROPER LOCATION ON ABOVE INDEX

CORNER MONUMENT

WITNESS MONUMENT

(a)

BEARINGS ARE BASED ON:

KHADER ABU AL-EIS WITH THE WISCONSIN DEPARTMENT OF TRANSPORTATION WAS THE PROJECT ENGINEER FOR THE STH 104 PROJECT. HE REVISED EXISTING TIE SHEETS OF GREEN COUNTY'S PLSS CORNERS AND SENT THEM TO THE ROCK COUNTY SURVEYOR. THE REVISED SHEET IS TAPED TO THE BACK SIDE.

AUGUST 13, 1996

DONALD BARNES, ROCK COUNTY SURVEYOR

FIELD BOOK \_\_\_\_\_ PAGE # \_\_\_\_\_

SHEET \_\_\_\_\_ OF \_\_\_\_\_

SHOW A PLAN VIEW DRAWING DEPICTING THE CORNER MONUMENT AND SURROUNDING PHYSICAL FEATURES, INCLUDING THE EXCAVATION AREA AND DEPTH.

PLANNING & ZONING COMMITTEE ADOPTED THE ABOVE FORM ON 12/2/1982

CORNER CODE B-001



Filed; Spring Valley Twsp., Rock County

# SECTION CORNER TIES

TO THE SOUTHEAST CORNER OF SECTION 1, TOWN 2 NORTH, RANGE 9 EAST,  
GREEN COUNTY, WISCONSIN.

NOTE: TOP OF MONUMENT AT GRADE.

LEGEND

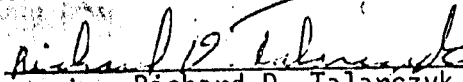
-  CAST ALUMINUM MONUMENT
-  #10 x 30" IRON ROD

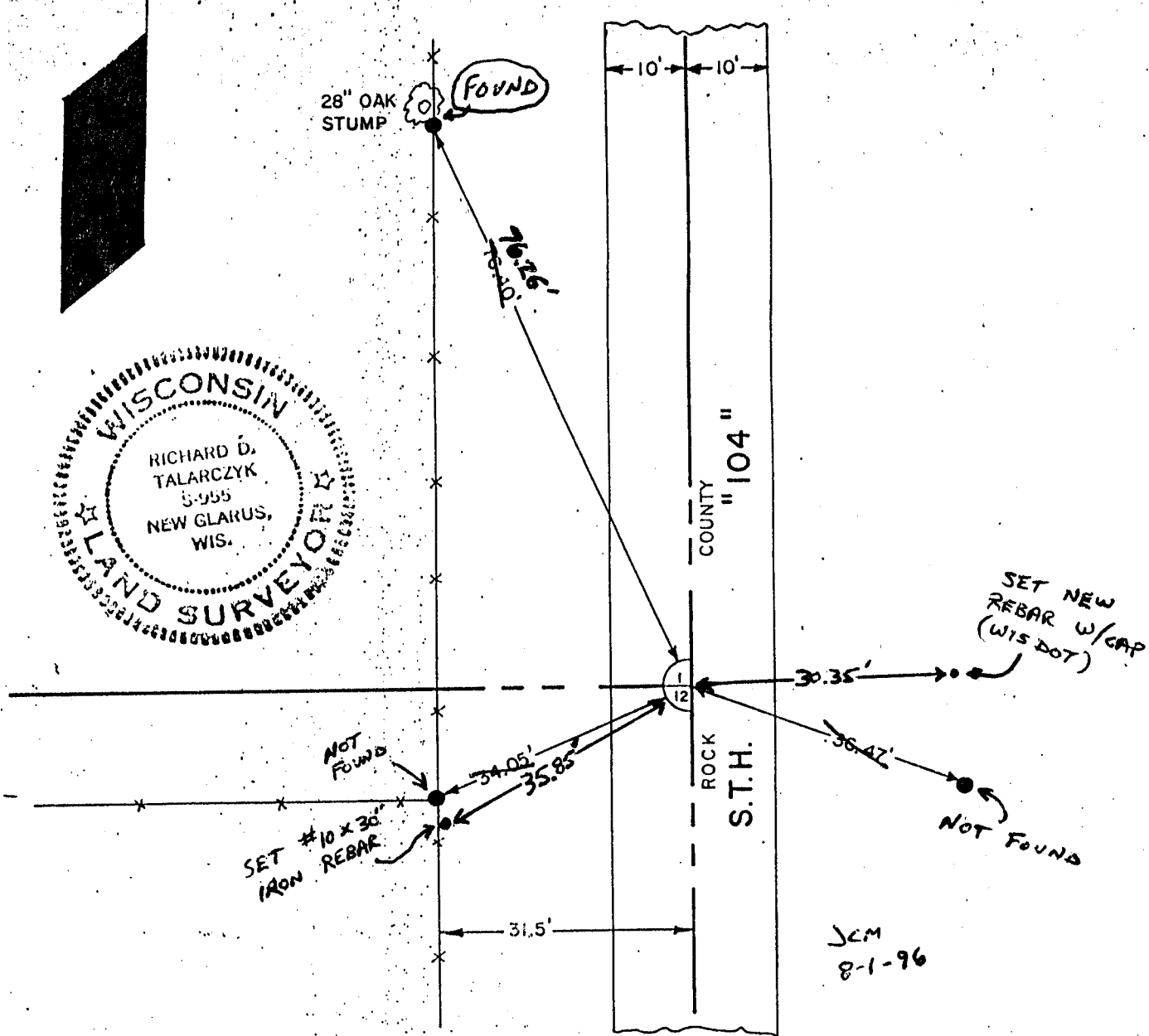
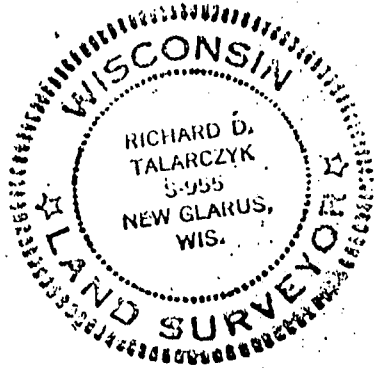
SCALE 1" = 20'

I, Richard D. Talarczyk, hereby certify that I have complied with the Wisconsin Statutes, Statutes of the United States, and the rules and regulations made by the Secretary of the Interior in the location of the corner shown below.

11-10-77

Revised 2/22/84: RDT

  
Richard D. Talarczyk



Corner set by Proportionate Measurement & Existing Physical Evidence.

13-21  
6-

DRAWN BY	Rm	<b>DICK TALARCZYK</b> <b>LAND SURVEYING</b> RT. 1 NEW GLARUS, WISC. 53574 PHONE (608) 527-5216
CHECKED	RPT	
JOB NO.	0174	
BOOK	PAGE	