

U.S. PUBLIC LAND SURVEY MONUMENT RECORD

For Public Land Survey Corners in:

WI ADMINISTRATIVE CODE A-E 7.08 REQUIREMENT

T. 2N., R. 10E

CORNER CODE INDEX

	2	3	4	5	6	7	8	9	10	11	12	13	14	15	16	17	18	19	20	21	22	23	24	25
A																								
B	6																							
C		5																						
D																								
E																								
F																								
G	1																							
H		8																						
I																								
J																								
K	18																							
L		17																						
M																								
N																								
O																								
P	19																							
Q		20																						
R																								
S																								
T	30																							
U		29																						
V																								
W																								
X	31																							
Y		32																						
Z																								

SPRING VALLEY TWP
ROCK COUNTY WI

IF AVAILABLE
ROCK COUNTY COORDINATES PREFERRED

North _____ Elev. _____

East _____

Hor. Datum _____ Vert. Datum _____

LATITUDE _____ ELLIPS. HT. _____

LONGITUDE _____

GPS (X) _____ TRAVERSE (X) _____

BASED ON THE FOLLOWING CONTROL:

PLACE MONUMENT SYMBOL AT PROPER LOCATION ON ABOVE INDEX

CORNER MONUMENT

WITNESS MONUMENT

(a)

BEARINGS ARE BASED ON:

FIELD BOOK _____ PAGE # _____

SHEET 1 OF 2

SHOW A PLAN VIEW DRAWING DEPICTING THE CORNER MONUMENT AND SURROUNDING PHYSICAL FEATURES, INCLUDING THE EXCAVATION AREA AND DEPTH.

PLANNING & ZONING COMMITTEE ADOPTED THE ABOVE FORM ON 12/2/1982

CORNER CODE A-1

SP501

(B) Describe any record evidence, monument evidence, occupational evidence, testimonial evidence or any other material evidence you considered, and whether the monument was found or placed.

- 1833 MULLETT WEST ON SOUTH SIDE SECTION 31 (T3N R10E)
330' ENTER MARSH
2640 SET QUARTER SECTION POST IN MARSH BUR OAK 16 S38W
168.96' & BUR OAK 16 S17E 168.3'
5214' STREAM 6 @ SW S MARSH
5631.12' INTERSECTED RANGE LINE 957' NORTH OF CORNERS TO SECTIONS
1 & 12 T2N R9E. SET POST AT INTERSECTION FOR CORNERS TO
TOWNSHIPS 2 & 3N RANGE 10E. BUR OAK 14 N24E 148.5, BUR
OAK 8 N8 1/2W 85.8'.
1867 LOCKE VOL 1 PG 304 FOUND E B.T. & SET STAKE WITH HH ON E & W AND 2
LIMESTONES ON N & 2 ON S.
1873 LEE VOL 2 PG 96 FOUND STAKE SET BY LOCKE & NE B.T.
1882 RUGER VOL 2 PG 410 USED CORNER BUT STATED NOTHING ABOUT CORNER
1937 SUNNY VOL 3 PG 354 COVERED WITH CONCRETE ROAD OVER MASH. DID NOT
DIG FOR IT.
1982 BARNES VOL 6 PG 268 DUG & FOUND 1 1/2' DEEP 2 HH ON E & W AND 2
LIMESTONES ON N & S. DID NOT FIND THE WOOD STAKE NOR WOOD FIBERS.
1987 BARNES Z-1 FOUND PK 10.00 TO THE WEST AND SOUTH. PLACED POLY.
MONUMENT

FOUND POLY. MONUMENT & REFERENCED SAME. MONUMENT WILL BE DISTURBED BY
ROAD PAVING PROJECT.

C) Was the corner restored through acceptance of (1) an obliterated
evidence location, or, (2) a found perpetuated location?

ACCEPTED FOUND PERPETUATED LOCATION

D) Describe any material discrepancy between the location of the
corner as restored or reestablished and the location of that corner as
previously restored or reestablished by distance and direction. Show
the discrepancy on the plan view drawing under (a), above. Show the
distances between the corner as previously restored or reestablished
and (1) the corner as restored or reestablished, and (2) to at least 4
of the witness monuments shown on the drawing in (a), above.

(E) Was the corner reestablished through lost corner proportionate
methods? If so, show the method, including the directions and
distances to other public land survey corners used as evidence or used
for proportioning the corner location.

I, Donald Barnes, hereby certify that the corner location as identified
by the corner code index was determined by me under by direction and
control and that this U.S. Public Land Survey Monument Record is
correct and complete to the best of my knowledge and belief.

Seal
Donald Barnes
7/25/1996
emboss

Number of included sheets 1

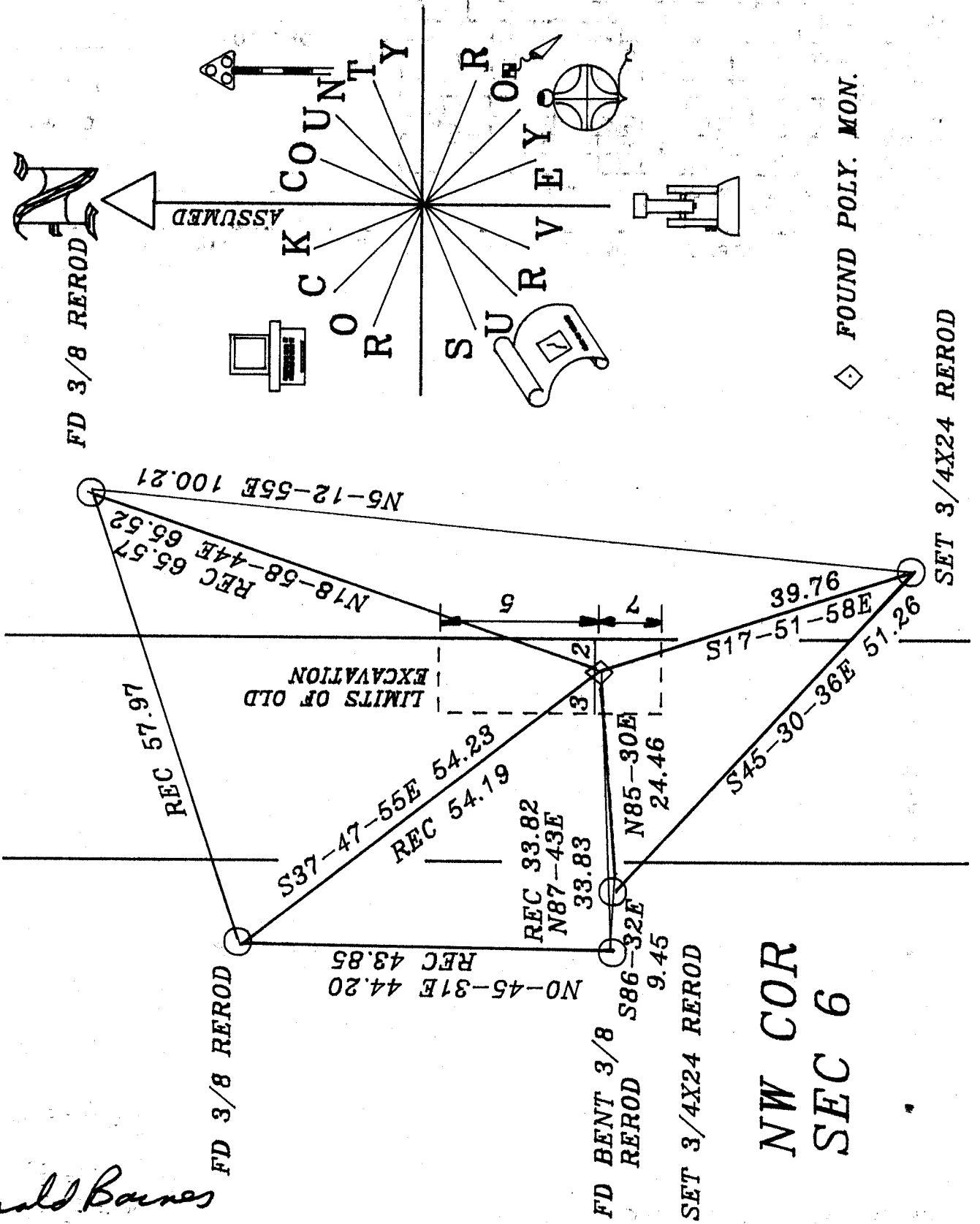
CORNER CODE

A-E 7.08 REQUIREMENT

A-1

Donald Barnes
7/25/1996

STH 104



NW COR
SEC 6