

# U.S. PUBLIC LAND SURVEY MONUMENT RECORD

For Public Land Survey Corners in:

WI ADMINISTRATIVE CODE A-E 7.08 REQUIREMENT

T. 2N., R. 10E

### CORNER CODE INDEX

A	1	2	3	4	5	6	7	8	9	10	11	12	13	14	15	16	17	18	19	20	21	22	23	24	25
B																									
C	6					5				A				3				2						1	
D																									
E																									
F																									
G	7					8				9				10				11						12	
H																									
I																									
J																									
K	18					17				16				15				14						13	
L																									
M																									
N																									
O	19					20				21				22				23						24	
P																									
Q																									
R																									
S	30					29				28				27				26						25	
T																									
U																									
V																									
W																									
X	31					32				33				34				35						36	
Y																									
Z																									

SPRING VALLEY TWP  
ROCK COUNTY WI

IF AVAILABLE  
ROCK COUNTY COORDINATES PREFERRED

North \_\_\_\_\_ Elev. \_\_\_\_\_

East \_\_\_\_\_

Hor. Datum \_\_\_\_\_ Vert. Datum \_\_\_\_\_

LATITUDE \_\_\_\_\_ ELLIPS. HT. \_\_\_\_\_

LONGITUDE \_\_\_\_\_

GPS (X) \_\_\_\_\_ TRAVERSE (X) \_\_\_\_\_

BASED ON THE FOLLOWING CONTROL:

PLACE MONUMENT SYMBOL  AT PROPER LOCATION ON ABOVE INDEX

CORNER MONUMENT

WITNESS MONUMENT

(a)

BEARINGS ARE BASED ON:

FIELD BOOK \_\_\_\_\_ PAGE # \_\_\_\_\_

SHEET 1 OF 3

SHOW A PLAN VIEW DRAWING DEPICTING THE CORNER MONUMENT AND SURROUNDING PHYSICAL FEATURES, INCLUDING THE EXCAVATION AREA AND DEPTH.

PLANNING & ZONING COMMITTEE ADOPTED THE ABOVE FORM ON 12/2/1982

CORNER CODE G1

SP534

(B) Describe any record evidence, monument evidence, occupational evidence, testimonial evidence or any other material evidence you considered, and whether the monument was found or placed.

- 1868 LEE VOL 1 PG 336 FOUND N B.T. & REMAINS OF OLD STAKE. SET DRY BR O STAKE & SURROUNDED BY 4 HH 2612.28 TO SW COR SEC 7. USED TO SUBDIVIDE SEC 7. E/W 1/4 LINE VAR 7-20 & FROM CENTER TO E 1/4 COR SEC 7 2679.6.
- 1879 RUGER VOL 2 PG 265 ESTABLISHED 1/4 CORNER FROM SEC CORNERS. SET HH 24X12X12 IT IS 4.29' NORTH OF CORNER SET BY LEE. 2621.52 VAR 5-55 TO NW COR SEC 7, 2621.52 VAR 5-55 TO SW CORNER SEC 7, 2587.20 TO CENTER OF SEC 7, & 5221.26 TO E 1/4 COR SEC 7.
- 1937 SUNNY VOL 3 PG 555 DUG 4X5X3.5 DEEP HOLE. FOUND NO MONUMENT.
- 19?? VOL 5 PG 490 (INFORMATION COPIED FROM FIELD NOTES BK 136 PG 48 BY HC & O.S.) E/W FENCE AT CORNER & E/W FENCE 30' NORTH OF CORNER, 2627 TO SW COR SEC 7 AND E/W FENCE AT 1/16TH CORNER IS 1313.5 TO W 1/4 COR & 1313.5 TO SW COR SEC 7.
- 1967 LEE PLAT OF SURVEY CALLS FOR E/W FENCE AT 1/16TH CORNER AND A DISTANCE OF 1313.3 FROM THE FENCE TO THE SW COR SEC 7 AND A FENCE AT THE W 1/4 COR SEC 7. DUG & FOUND 1 HH ON LINE AT THE N 1/16TH CORNER OF THE SW 1/4 OF SEC 7. FOUND HH DISTURBED AT THE CENTER OF SEC 7.
- 1982 BARNES VOL 6-242 SHOWS RECORD DISTANCES.

DUG 5' DEEP AND FOUND NOTHING. DUE TO PAVING PROJECT I DID NOT INSTALL MONUMENT.

ORIGINAL GOVERNMENT SURVEYOR NEVER ESTABLISHED THIS CORNER. NOTE LEE'S STATEMENT CONCERNING THE BEARING TREE AND STAKE.

C) Was the corner restored through acceptance of (1) an obliterated evidence location, or, (2) a found perpetuated location?

RESTORED CORNER ON LINE BETWEEN THE NE AND E 1/4 CORNERS OF SEC 13 AND AT OCCUPATION OF E/W FENCE AS SHOWN BY VOL 5 PG 490. THIS IS IN HARMONY WITH OCCUPATION TO THE SOUTH AND RECORD DISTANCES.

D) Describe any material discrepancy between the location of the corner as restored or reestablished and the location of that corner as previously restored or reestablished by distance and direction. Show the discrepancy on the plan view drawing under (a), above. Show the distances between the corner as previously restored or reestablished and (1) the corner as restored or reestablished, and (2) to at least 4 of the witness monuments shown on the drawing in (a), above.

(E) Was the corner reestablished through lost corner proportionate methods? If so, show the method, including the directions and distances to other public land survey corners used as evidence or used for proportioning the corner location.

I, Donald Barnes, hereby certify that the corner location as identified by the corner code index was determined by me under by direction and control and that this U.S. Public Land Survey Monument Record is correct and complete to the best of my knowledge and belief.

*Donald Barnes*  
AUGUST 23 1996  
emboss

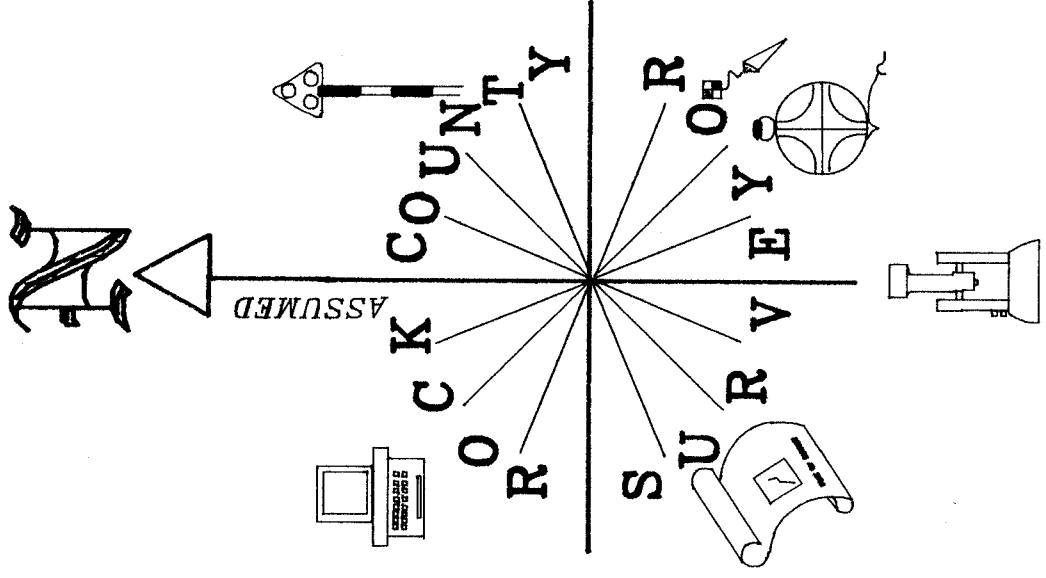
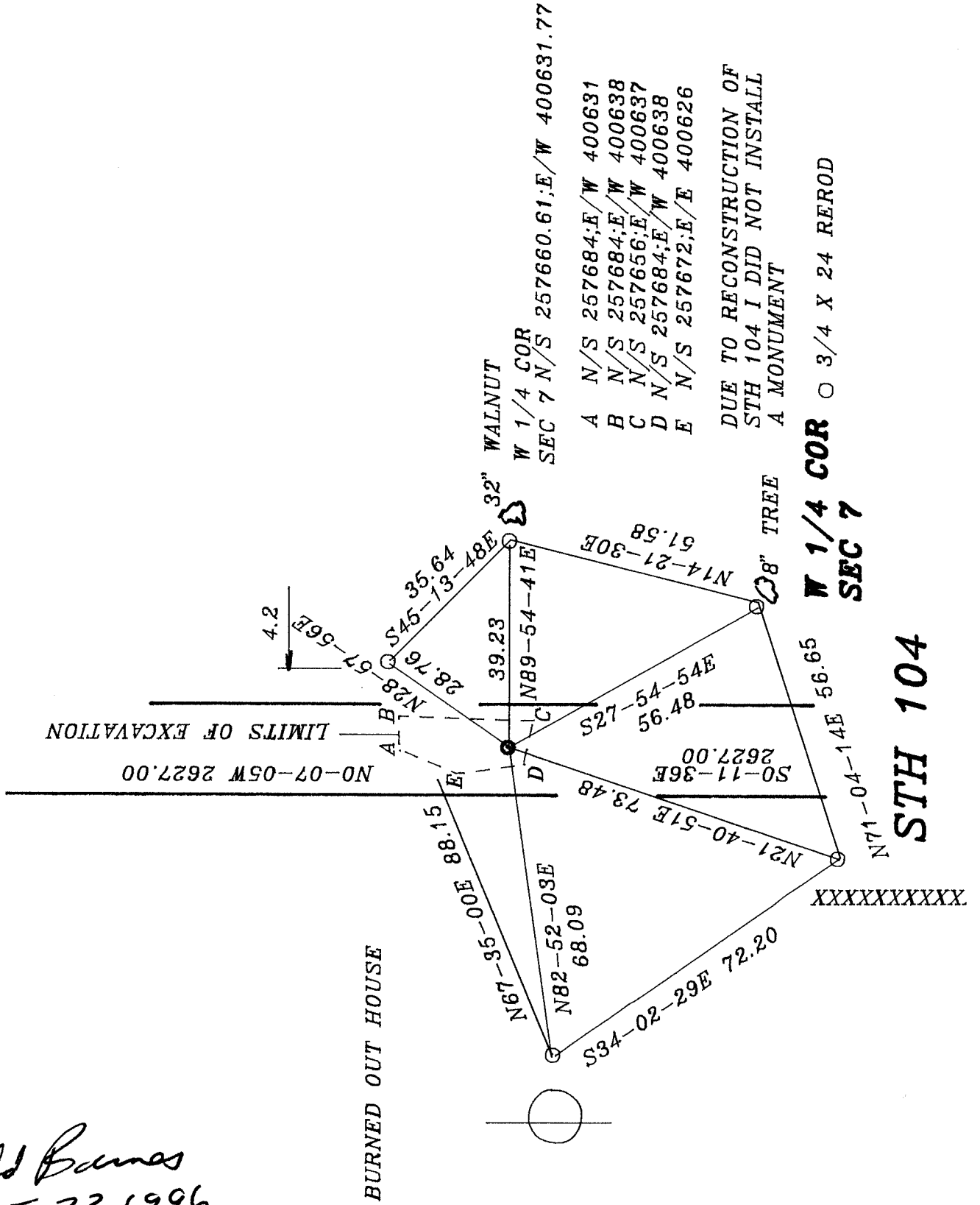
Number of included sheets \_\_\_\_\_

CORNER CODE

A-E 7.08 REQUIREMENT

61

Donald Barnes  
 AUGUST 23, 1996



OBSERVATION SHEET

NW COR

FD POLY

FD ALUM. MON.

ORIG 198 NORTH OF POST >

MULLETT 9/11/1833 957.00  
ORIG 957.0  
BARNES 1982 989.49  
BARNES 1987 S0-41-14E 989.55  
S0-01-25E 989.48

SEC 12

FD ALUM. MON.

T2N R9E

NO-24-41W 2633.09  
MULLETT 9/6/1833 2640  
1982 N3-39-13W 2633.05  
NO-08-51W 2633.12  
MULLETT 9/6/1833 2640  
1982 N3-23-09W 2633.12  
NO-05-43W 2633.54  
MULLETT 9/6/1833 2640  
NO-11-01W 2626.74  
MULLETT 9/6/1833 2640

FD ALUM. MON.

MILLER 3/18/1834 1119.36  
ORIG 181.5 NORTH OF POST >  
NO-08-51W 1142.28

XXXXXXXXXX

30  
XXXXXXXXXX  
W 1/4 CO 7

FD ALUM. MON.

SEC 13

FD C.I.

SW COR

FD ALUM. MON.

ORIG 59.4 NORTH OF POST >  
MILLER 3/18/1834 1160.28  
NO-04-22W 1148.56

LEE 1873 VAR 6-05 1/2  
LEE 1873 2913.90  
BARNES 1987 2991.12  
BARNES 1987 S89-03-01E  
MULLETT 9/11/1833 2991.12

LOCKE 50.16  
S89-23-44E 49.96

ORIG 2640

NE COR

LOCKE 1867 2866.38 X  
BARNES 1987 2867.07 X

LOCKE 1867 2442 VAR 7-15  
S88-21-41E  
2867.12  
NO-15-16W 2446.69  
ORIG PLAT 2422.20

CHURCH 1855 2336.40

CHURCH 1855 2325.84

CHURCH 1855 2310.66

CHURCH 1855 2301.42  
ORIG 2422.2

CENTER

LOCKE 1867 VAR 7-45  
LOCKE 1867 2702.96  
LOCKE 1867 (?) 2636.83  
LOCKE 1867 2729.10  
POSSIBLY 1 CHAIN ERROR  
LOCKE ? 2663.1  
ORIG PLAT 2640  
NO-15-50W 2666.70

N3-39-09E 1328.33  
1327.39 LOCKE 1327.39

SEC 6

N89-14-58E 5353.61  
LOCKE 1867 5349.56  
LOCKE 1867 2646.60

X E 1/4 COR

LOCKE 1867 3-40 2650.56  
ORIG 2640  
N3-28-59E 2657.26

X NE COR

RUGER 1879 VAR 6-44  
RUGER 1879 2562.78  
MILLER 3/18/1834 2706.00  
N88-49-04E 2525.32

RUGER 1879 2651.22  
RUGER 1879 VAR 6-20  
MILLER 3/18/1834 2640.00  
N89-17-25E 2654.84  
RUGER 1879 5214.0

LOCKE 1866 2631.42  
RUGER 1879 2628.12  
N1-15-16W 2632.88

FD ALUM. MON.

FD ALUM. MON.

E 1/4 COR

RUGER 1879 2621.52  
RUGER 1879 VAR 5-55  
RUGER 1879 5243.04  
NO-07-05W 2627.00  
RUGER 1879 1310.76  
RUGER 1879 2631.42

RUGER 1879 VAR 6-39  
1879 2587.20

N89-07-37E 5232.25  
RUGER 1879 5221.26  
RUGER 1879 2634.06  
LEE 1868 2679.6  
LEE 1868 VAR 7-200

FD ALUM. MON.

RUGER 1879 5242.99  
RUGER 1879 2627.24  
LEE 1868 2655.84

LEE 1868 2654.52  
LEE 1868 VAR 8-00  
RUGER 1879 2644.46

SEC 7

MILLER 3/18/1834 2737.02  
RUGER 1879 2644.29  
RUGER 1879 VAR 6-00

MILLER 3/18/1834 2640  
RUGER 1879 2621.2  
RUGER 1879 VAR 5-35

SE COR

X POSITION COMPUTED FROM  
OLD FIELD DATA.

Donald Barnes  
AUGUST 23, 1996