

U.S. PUBLIC LAND SURVEY MONUMENT RECORD

For Public Land Survey Corners in:

WI ADMINISTRATIVE CODE A-E 7.08 REQUIREMENT

T. 2N., R. 10E

CORNER CODE INDEX

A	1	2	3	4	5	6	7	8	9	10	11	12	13	14	15	16	17	18	19	20	21	22	23	24	25
B																									
C	6																								
D																									
E																									
F																									
G	7																								
H																									
J																									
K	18	17																							
L																									
M																									
N																									
O																									
P	19	20																							
Q																									
R																									
S	30	29																							
T																									
U																									
V																									
W																									
X	31	32																							
Y																									
Z																									

SPRING VALLEY TWP
ROCK COUNTY WI

IF AVAILABLE
ROCK COUNTY COORDINATES PREFERRED

North _____ Elev. _____

East _____

Hor. Datum _____ Vert. Datum _____

LATITUDE _____ ELLIPS. HT. _____

LONGITUDE _____

GPS (X) _____ TRAVERSE (X) _____

BASED ON THE FOLLOWING CONTROL:

PLACE MONUMENT SYMBOL AT PROPER LOCATION ON ABOVE INDEX

CORNER MONUMENT

WITNESS MONUMENT

(a)

BEARINGS ARE BASED ON:

FIELD BOOK _____ PAGE # _____

SHEET 1 OF 2

SHOW A PLAN VIEW DRAWING DEPICTING THE CORNER MONUMENT AND SURROUNDING PHYSICAL FEATURES, INCLUDING THE EXCAVATION AREA AND DEPTH.

PLANNING & ZONING COMMITTEE ADOPTED THE ABOVE FORM ON 12/2/1982

CORNER CODE X-17

SP618

(B) Describe any record evidence, monument evidence, occupational evidence, testimonial evidence or any other material evidence you considered, and whether the monument was found or placed.

1834 MILLER NORTH BETWEEN SEC 34 & 35

1690.92 BUR OAK 16 IN

2640 SET 1/4 SEC. POST

YEL O. 5 IN S10E 141.24'

BUR O. 15 IN N13-30E 227.7'

3630 ENTER MARSH @ S.E.

5148 LEAVE SAME

5280 SET POST COR OF SEC 27,26,34,35

1851 McVEAN VOL 1 PG 8 2622.84 VAR 6 1/2 TO CENTER SEC 34, 5272.08 TO W 1/4 COR SEC 34. STATES NOTHING ABOUT MONUMENT.

1851 McVEAN VOL 1 PG 7 2657.82 TO NW COR SEC 35, 2647.26 TO SW COR SEC 35, 5271.42 VAR 6 1/2 TO E 1/4 COR SEC 35. STATES NOTHING ABOUT MONUMENT.x

DUG 1.5' DEEP 1.5 WEST, 1.5 EAST, 2' NORTH, & 1.5' SOUTH OF INSTALLED MONUMENT. FOUND NOTHING.

C) Was the corner restored through acceptance of (1) an obliterated evidence location, or, (2) a found perpetuated location?

CORNER RESTORED THROUGH ACCEPTANCE OF OBLITERATED EVIDENCE LOCATION. PLACED POLY. MONUMENT & CARSONITE AT FENCE INTERSECTION. THIS WAS IN HARMONY WITH McVEAN'S DISTANCES TO THE NW AND E 1/4 CORNER OF SEC 35.

D) Describe any material discrepancy between the location of the corner as restored or reestablished and the location of that corner as previously restored or reestablished by distance and direction. Show the discrepancy on the plan view drawing under (a), above. Show the distances between the corner as previously restored or reestablished and (1) the corner as restored or reestablished, and (2) to at least 4 of the witness monuments shown on the drawing in (a), above.

(E) Was the corner reestablished through lost corner proportionate methods? If so, show the method, including the directions and distances to other public land survey corners used as evidence or used for proportioning the corner location.

I, Donald Barnes, hereby certify that the corner location as identified by the corner code index was determined by me under by direction and control and that this U.S. Public Land Survey Monument Record is correct and complete to the best of my knowledge and belief.

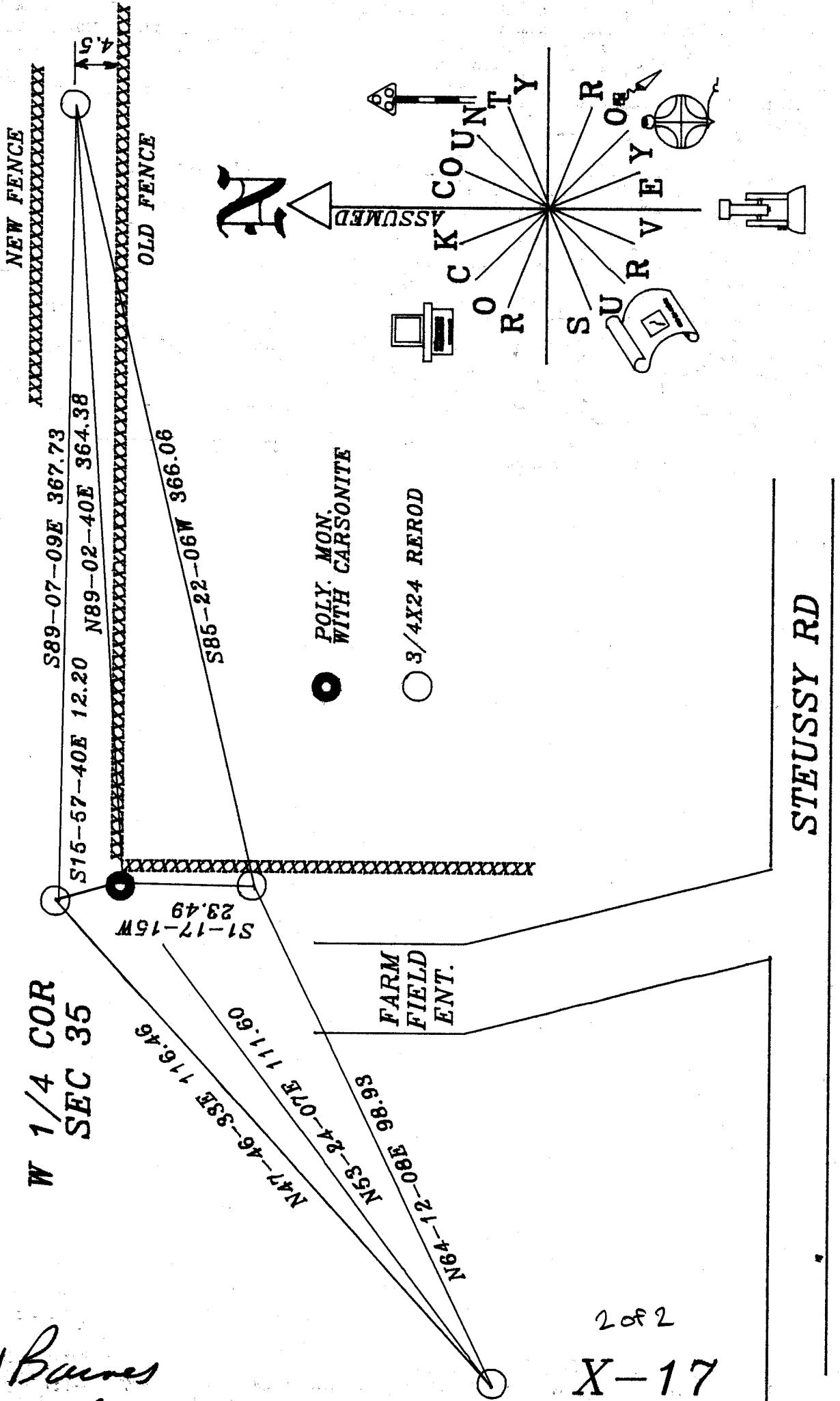
sealx

Donald Barnes
Sep 10, 1996

Number of included sheets 1

X-17

FARM FIELD ENTRANCE



W 1/4 COR
SEC 35

Dwight Barnes
Sep 10, 1996

2 of 2
X-17