

U. S. PUBLIC LAND SURVEY MONUMENT RECORD

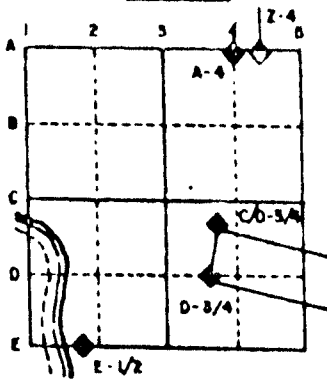
For Public Land Survey Corners in the
T. 2 N., R. 10 E.

CORNER CODE INDEX

	1	2	3	4	5	6	7	8	9	10	11	12	13	14	15	16	17	18	19	20	21	22	23	24	25
A																									
B																									
C	6																								
D		5																							
E			4																						
F				3																					
G					2																				
H																									
I																									
J	7																								
K		8																							
L			9																						
M				10																					
N					11																				
O						12																			
P							13																		
Q								14																	
R									15																
S										16															
T											17														
U												18													
V													19												
W														20											
X															21										
Y																22									
Z																	23								
																		24							
																			25						
																				26					
																					27				
																						28			
																							29		
																								30	
																									31
																									32
																									33
																									34
																									35
																									36

PLACE MONUMENT SYMBOL (◆) AT PROPER LOCATION ON ABOVE INDEX

EXAMPLE



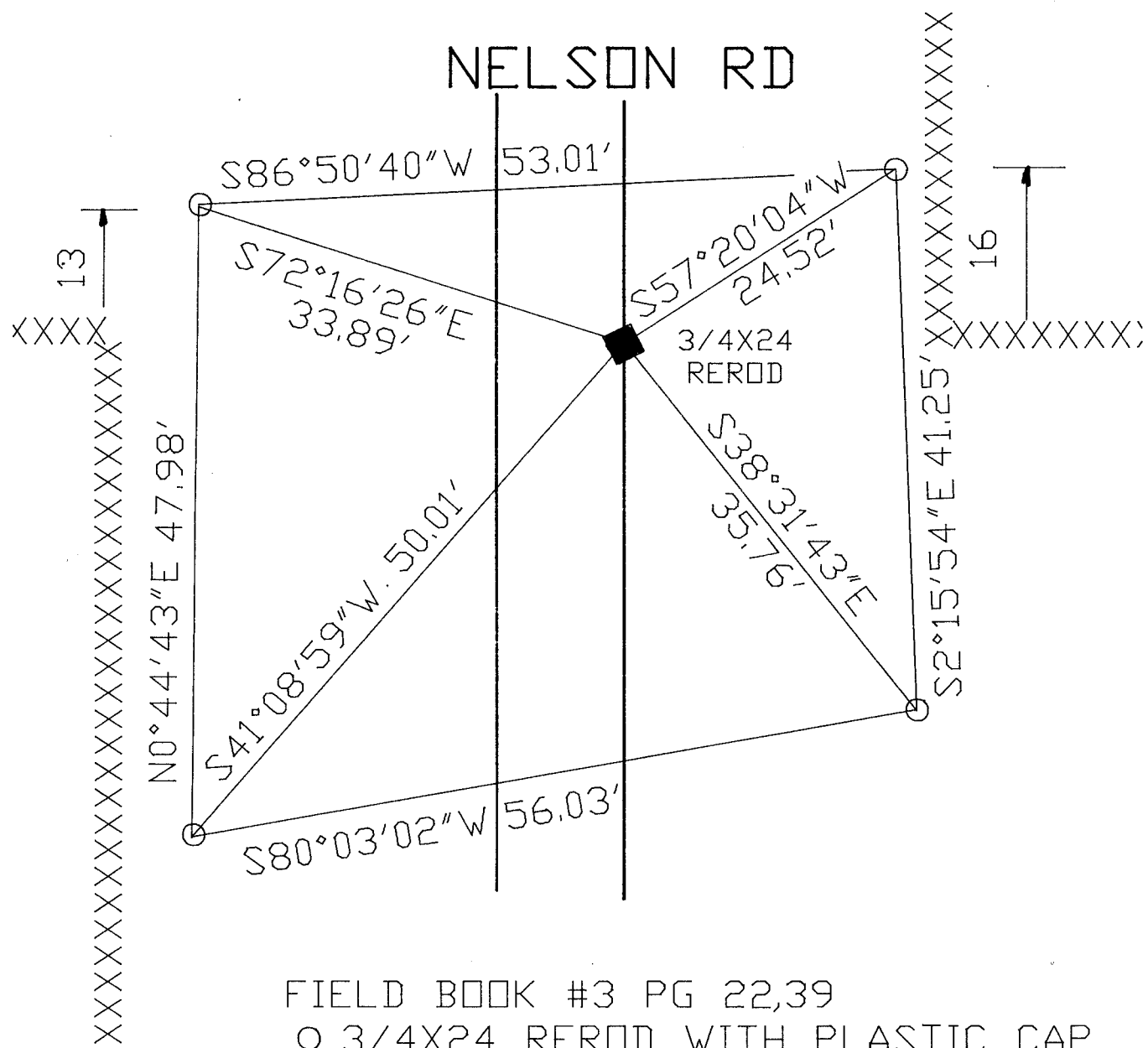
SPRING VALLEY TWP
ROCK COUNTY WI

IF AVAILABLE
STATE PLANE COORDINATES

North (Y) _____ Elev. (Z) _____
 East (X) _____ Zone _____
 Hor. Datum _____ Vert. Datum _____

◆ CORNER MONUMENT ○ WITNESS MONUMENT

NELSON RD



BEARINGS ARE BASED ON ASSUMED

RECORDED

SHEET 1 OF 2

CORNER CODE: X 13

(B) Describe any record evidence, monument evidence, occupational evidence, testimonial evidence or any other material evidence you considered, and whether the monument was found or placed.

1851 Mc VEAN VOL 1 PG 8 USED CORNER TO SUBDIVIDE SECTION 34. CALLS FOR 2642.64 TO NW CORNER OF SECTION 34 AND 5272.08 TO E 1/4 CORNER OF SECTION 34.

1866 LOCKE VOL 1 PG 261 FOUND SB TREE - SET STAKE SURROUNDED BY 4 LIMESTONES. CALLS FOR 1323.96 TO N 1/16TH CORNER AND 1323.30 TO THE E 1/16TH CORNER OF THE SE 1/4 OF SECTION 33.

1991 TALARCZYK 1324.94 TO S 1/16TH CORNER OF THE NE 1/4 OF SECTION 33.

DUG AND FOUND BED ROCK AT ABOUT 3 FEET. ROAD BANK ON BOTH SIDES OF THE ROAD INDICATES THAT THERE WAS A ROAD CUT. PLACED 3/4X24 REROD. CORNER IS ON EAST EDGE OF PAVEMENT AND ON LINE WITH E/W FENCE ON WEST SIDE OF ROAD.

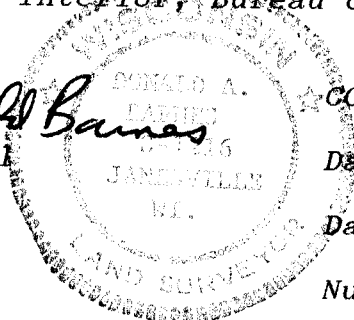
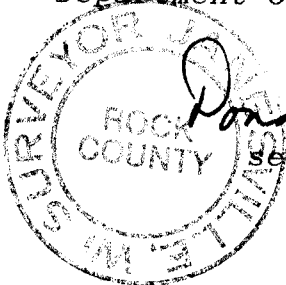
C) Was the corner restored through acceptance of (1) an obliterated evidence location, or, (2) a found perpetuated location?

RESTORED CORNER THROUGH ACCEPTANCE OF OBLITERATED EVIDENCE LOCATION. TO ESTABLISH THE N/S POSITION, I PRORATED ALL OF LOCKE'S DISTANCES IN SECTION 33 WITH HIS DISTANCE FROM THE SE TO E 1/4 CORNER OF SECTION 33. TO ESTABLISH THE E/W POSITION, I PRORATED ALL OF LOCKE'S DISTANCES IN SECTION 33 WITH HIS DISTANCE FROM THE S 1/16TH CORNER OF THE NE 1/4 OF SECTION 33. THIS POSITION IS IN HARMONY WITH THE CENTER AND S 1/16TH CORNER OF THE NE 1/4 OF SECTION 33. THE CENTER OF SECTION IS 2.38 NORTH OF A LINE BETWEEN THE EAST AND WEST QUARTER CORNERS OF SECTION 33. THE S 1/16TH CORNER OF THE NE 1/4 OF SECTION 33 IS .17 NORTH OF A LINE BETWEEN THE EAST AND WEST QUARTER CORNERS OF SECTION 33.

D) Describe any material discrepancy between the location of the corner as restored or reestablished and the location of that corner as previously restored or reestablished by distance and direction. Show the discrepancy on the plan view drawing under (a), above. Show the distances between the corner as previously restored or reestablished and (1) the corner as restored or reestablished, and (2) to at least 4 of the witness monuments shown on the drawing in (a), above.

(E) Was the corner reestablished through lost corner proportionate methods? If so, show the method, including the directions and distances to other public land survey corners used as evidence or used for proportioning the corner location.

I, Donald Barnes, hereby certify that the corner points as identified by the corner code index were, in a field survey on, AUGUST 6 1991, established, re-established, monumented, re-monumented, recovered or restored as expressed below and in conformance with the regulations and rules as required in the current manual of survey instructions of the United States Department of Interior, Bureau of Land Management.



COUNTY SURVEYOR FILING DATA

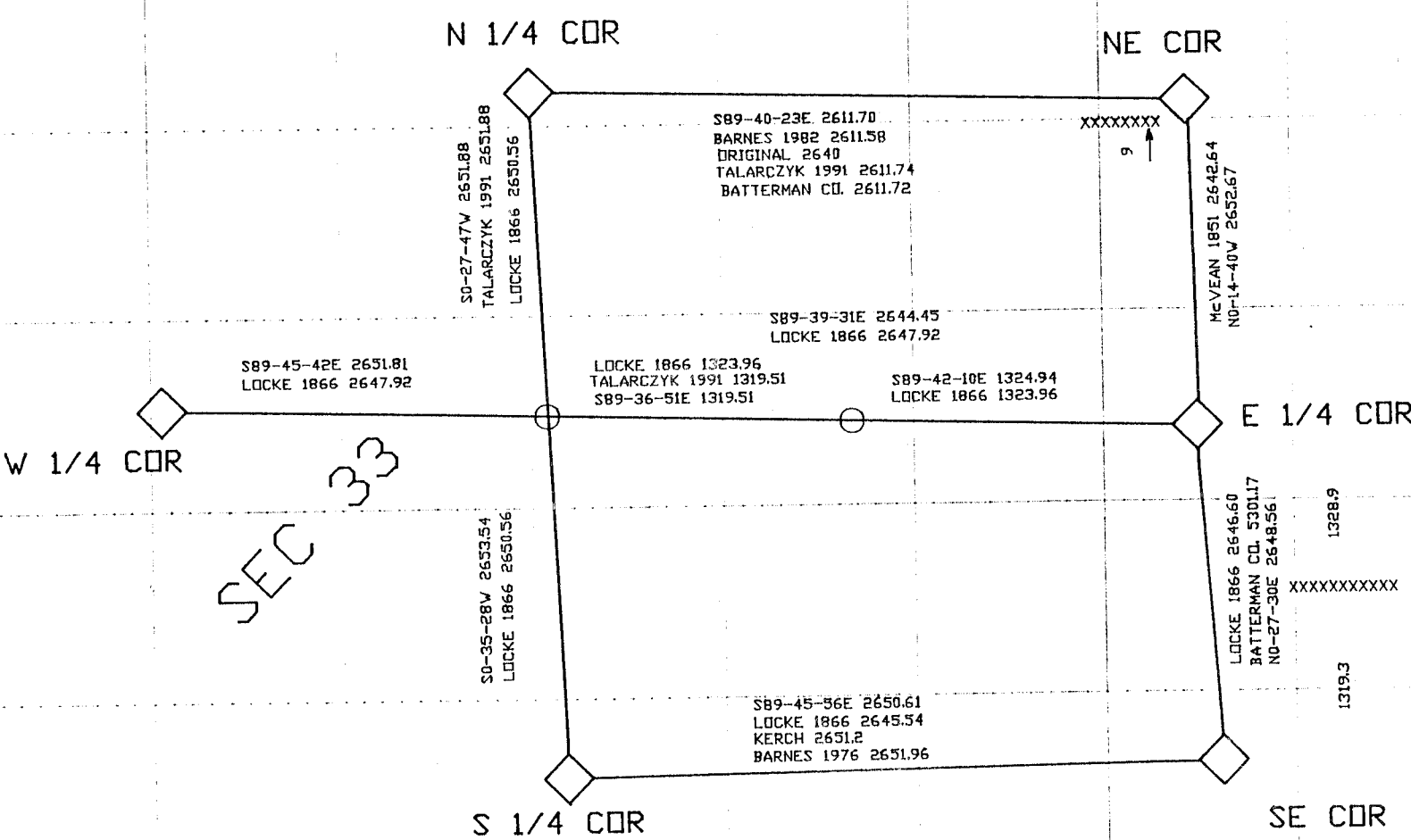
Date of computer entry _____

Date microfilmed _____

Number of included sheets /
CORNER CODE

AFFIX YOUR LAND SURVEYOR SEAL

X 13



CENTER OF SECTION . TALARCZYK FOUND 4 FLAT LIMESTONES 2' SOUTH & 4' E OF FENCE CORNER. PLACED 1X24 IRON ROD IN CENTER OF STONES.

S 1/16th COR OF NE 1/4 GROUND 5+/- S OF FENCE CORNER. TALARCZYK FOUND HK(WEST), L(SOUTH), AND LS LYING ON TOP OF PLACED 1X24 IRON ROD 10' NORTH OF LIMESTONE & 10' WEST OF FENCE CORNER.

WISCONSIN
DONALD A. BARNES
5-12-16
JAMES W. SMITH
LAND SURVEYOR

Donald Barnes

ROCK COUNTY
SURVEYOR JAMES W. SMITH

2 OF 2

X 13