

U.S. PUBLIC LAND SURVEY MONUMENT RECORD

For Public Land Survey Corners in:

WI ADMINISTRATIVE CODE A-E 7.08 REQUIREMENT

T. 2 N., R. 10 E

CORNER CODE INDEX

A	1	2	3	4	5	6	7	8	9	10	11	12	13	14	15	16	17	18	19	20	21	22	23	24	25
B	6					5				4					3					2					1
C																									
D																									
E																									
F	7					8				9					10					11					12
G																									
H																									
J																									
K																									
L	13					11				16					15					14					13
M																									
N																									
O																									
P	19					20				21					22					23					24
Q																									
R																									
S																									
T	30					29				28					27					26					25
U																									
V																									
W																									
X	31					32				33					34					35					36
Y																									
Z																									

SPRING VALLEY TWP

ROCK COUNTY WI

IF AVAILABLE
ROCK COUNTY COORDINATES PREFERRED

North _____ Elev. _____

East _____

Hor. Datum _____ Vert. Datum _____

LATITUDE _____ ELLIPS. HT. _____

LONGITUDE _____

GPS (X) _____ TRAVERSE (X) _____

BASED ON THE FOLLOWING CONTROL:

PLACE MONUMENT SYMBOL AT PROPER LOCATION ON ABOVE INDEX

CORNER MONUMENT

WITNESS MONUMENT

(a)

BEARINGS ARE BASED ON:

OBSERVATION SHEETS #

FIELD BOOK 3 PAGE # 64

SHEET 1 OF 3

SHOW A PLAN VIEW DRAWING DEPICTING THE CORNER MONUMENT AND SURROUNDING PHYSICAL FEATURES, INCLUDING THE EXCAVATION AREA AND DEPTH.

PLANNING & ZONING COMMITTEE ADOPTED THE ABOVE FORM ON 12/2/1982

CORNER CODE 11-19

SP610

(B) Describe any record evidence, monument evidence, occupational evidence, testimonial evidence or any other material evidence you considered, and whether the monument was found or placed.

1834 MILLER EAST RANDOM BETWEEN SEC 26 & 35

3366' ENTER MARSH @ S.W.

4488' LEAVE SAME

5227.2' INTERSECTED SEC. LINE 9.9' SOUTH POST

WEST CORRECTED BETWEEN SEC 26 & 35

2023.56' BUR OAK 12 DIA

2613.6 SET 1/4 SEC POST

BUR OAK 5 IN S20W 21.12'; BUR OAK 6 IN S72E 35.64'

3639.9' BUR OAK 15" DIA

4215.42 BUR OAK 12 IN DIA

5227.20' SEC COR.

1851 McVEAN VOL 1 PG 7 2630.76' TO NW COR SEC 35, 5290.56 TO S 1/4 COR SEC 35 & 2690.16 VAR 7 1/2 TO CENTER OF SEC 35.

1996 BARNES DUG WITH BACK HOE 4X4 HOLE @ N/S FENCE ON NORTH SIDE OF RD & CENTER OF PAVEMENT. 2.5' DEEP FOUND LARGE PIECES OF ASPHALT. NORTH & SOUTH R/W LINES ARE HIGHER THAN PAVEMENT. SINCE THIS IS PROBABLY A ROAD CUT AND LARGE PIECES OF ASPHALT INDICATES FORMER COUNTY SURVEYOR DUG, I DID NOT EXPAND THE HOLE.

DID NOT PLACE MONUMENT.

(C) Was the corner restored through acceptance of (1) an obliterated evidence location, or, (2) a found perpetuated location?

CORNER RESTORED THROUGH ACCEPTANCE OF OBLITERATED EVIDENCE LOCATION. THE CENTER OF THE PAVEMENT AND THE N/S FENCE WAS IN HARMONY WITH RECORD DISTANCES. ACCEPTED THE INTERSECTION OF THE CENTER OF PAVEMENT AND N/S FENCE LINE AS THE LOCATION.

(D) Describe any material discrepancy between the location of the corner as restored or reestablished and the location of that corner as previously restored or reestablished by distance and direction. Show the discrepancy on the plan view drawing under (a), above. Show the distances between the corner as previously restored or reestablished and (1) the corner as restored or reestablished, and (2) to at least 4 of the witness monuments shown on the drawing in (a), above.

(E) Was the corner reestablished through lost corner proportionate methods? If so, show the method, including the directions and distances to other public land survey corners used as evidence or used for proportioning the corner location.

I, Donald Barnes, hereby certify that the corner location as identified by the corner code index was determined by me under by direction and control and that this U.S. Public Land Survey Monument Record is correct and complete to the best of my knowledge and belief.



emboss

NOV 25, 1998

Number of included sheets _____

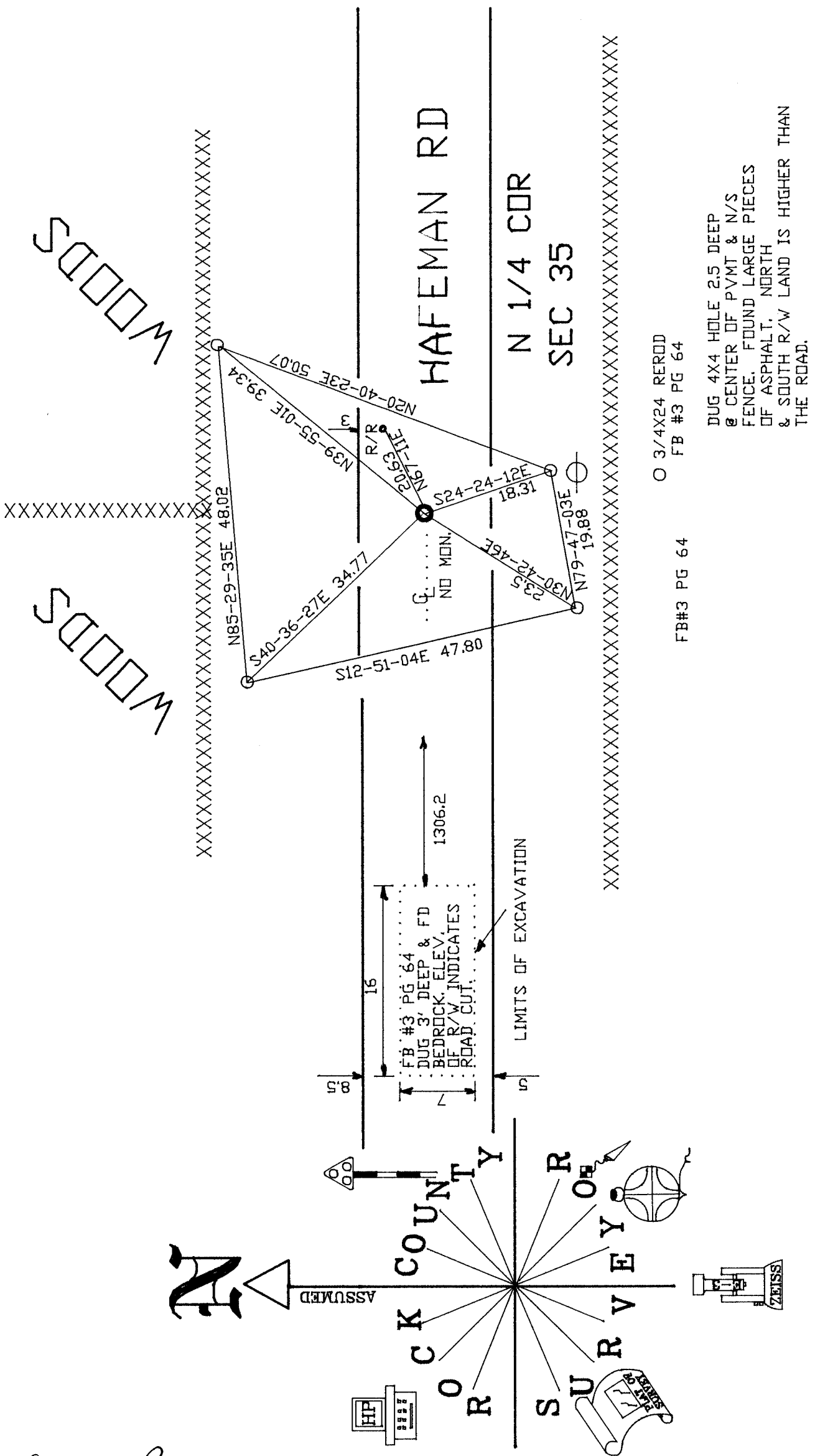
CORNER CODE

A-E 7.09 REQUIREMENT

V-19

Donald Barnes
869152024
2025, 1998

V-19

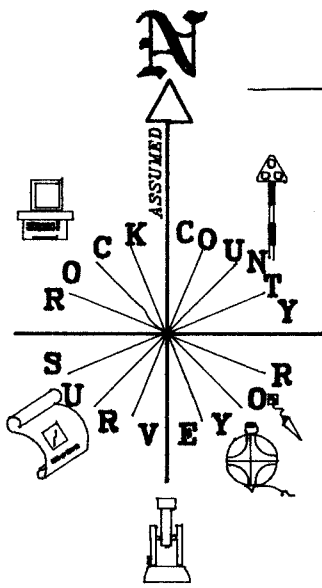


FB#3 PG 64

O 3/4X24 REROD

FB #3 PG 64

DUG 4X4 HOLE 2.5 DEEP
 @ CENTER OF PVMT & N/S
 FENCE. FOUND LARGE PIECES
 OF ASPHALT, NORTH
 & SOUTH R/W LAND IS HIGHER THAN
 THE ROAD.



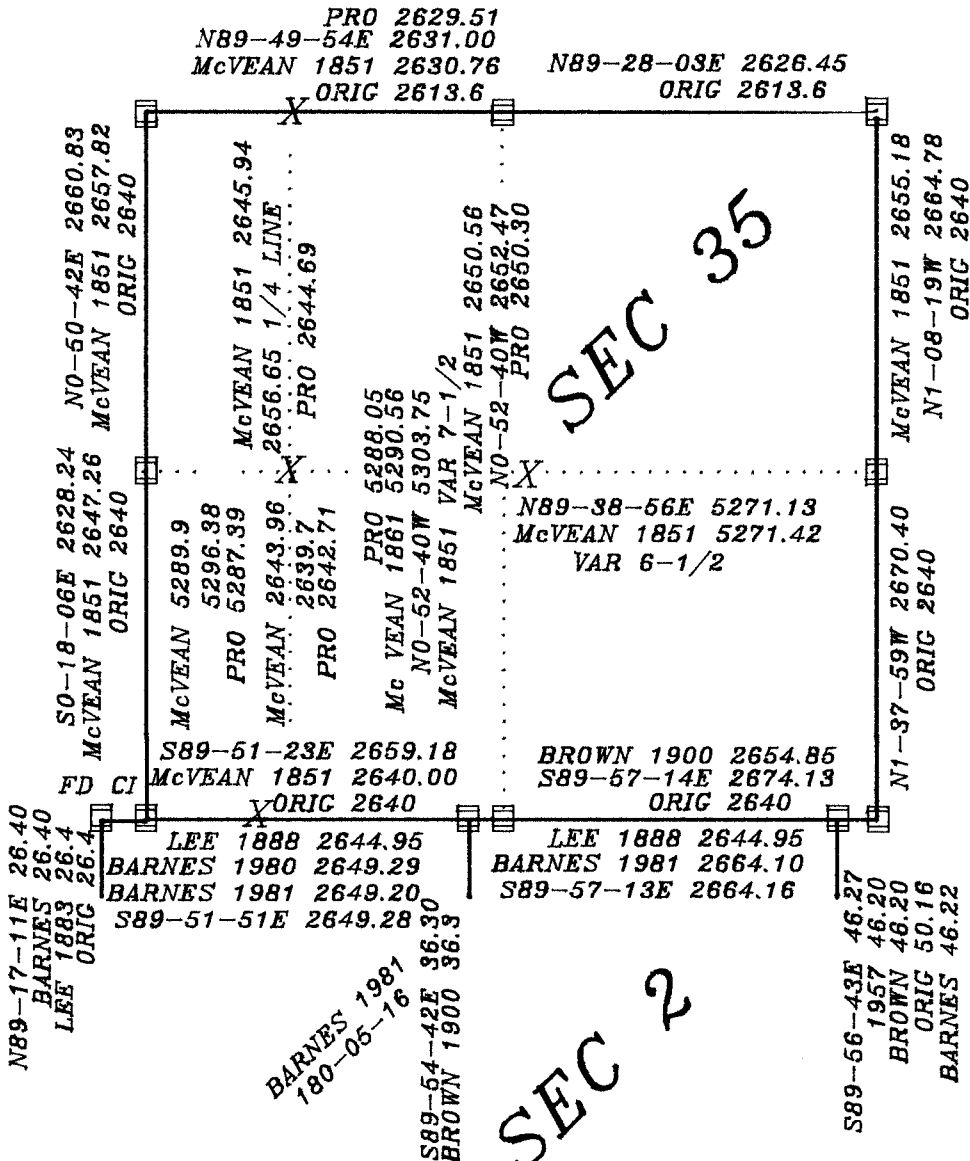
ORIG VAR BY OBSERVATION 7-40E
 PRO IS THE ROTATED DISTANCE
 BASED ON McVEAN'S 1851
 DISTANCES IN SEC 35

1851 McVEAN	MEASURED
2657.82	2660.83
2647.26	2628.24
2640.00	2659.18
2655.18	2644.78
5271.42	5271.13
TOTAL 15,871.68	15,864.16

SEC 26

- COMPUTED FROM OLD FIELD OBSERVATIONS.
- X COMPUTED POSITION
- MONUMENT FOUND OR POSITION DETERMINED BY THIS SURVEY

**T2N R10E
 SPRING VALLEY TWP**



*Donald Barnes
 Nov 25, 1998*

V-19