

U.S. PUBLIC LAND SURVEY MONUMENT RECORD

For Public Land Survey Corners in:

WI ADMINISTRATIVE CODE A-E 7.08 REQUIREMENT

T. 2N., R. 10E

CORNER CODE INDEX

A	1	2	3	4	5	6	7	8	9	10	11	12	13	14	15	16	17	18	19	20	21	22	23	24	25
B																									
C	6						5					4			3			2						1	
D																									
E																									
F																									
G	7						8					9			10			11					12		
H																									
J																									
K																									
L	18						17					16			15			14					13		
M																									
N																									
O																									
P	19						20					21			22			23					24		
Q																									
R																									
S																									
T	30						29					28			27			26					25		
U																									
V																									
W																									
X	31						32					33			34			35					36		
Y																									
Z																									

SPRING VALLEY TWP

ROCK COUNTY WI

IF AVAILABLE
ROCK COUNTY COORDINATES PREFERRED

North _____ Elev. _____

East _____

Hor. Datum _____ Vert. Datum _____

LATITUDE _____ ELLIPS. HT. _____

LONGITUDE _____

GPS (X) _____ TRAVERSE (X) _____

BASED ON THE FOLLOWING CONTROL:

PLACE MONUMENT SYMBOL AT PROPER LOCATION ON ABOVE INDEX

CORNER MONUMENT

WITNESS MONUMENT

(a)

BEARINGS ARE BASED ON:

FIELD BOOK _____ PAGE # _____

SHEET 1 OF 2

SHOW A PLAN VIEW DRAWING DEPICTING THE CORNER MONUMENT AND SURROUNDING PHYSICAL FEATURES, INCLUDING THE EXCAVATION AREA AND DEPTH.

PLANNING & ZONING COMMITTEE ADOPTED THE ABOVE FORM ON 12/2/1982

CORNER CODE T-17

SP598

(B) Describe any record evidence, monument evidence, occupational evidence, testimonial evidence or any other material evidence you considered, and whether the monument was found or placed.

- 1834 MILLER MARCH 13 NORTH BETWEEN SEC 26, 27
1478.4 A HICKORY 14 IN. ID.
2560.14 BUR OAK 15 IN. ID.
2640 SET 1/4 SEC POST BUR OAK 16 IN ID S47E 32.34'; BUR OAK 15 IN ID N69W 42.9'
3297.9 TRAIL N.W.
3698.64 B.O. 12 DIA.
4415.4 B.O. 12 IN DIA.
5280 SET POST COR SECS 22,23,26,27 BUR OAK 14 N84W 33.66'; BUR OAK 22 S12E 8.58'
- 1867 LOCKE VOL 1 PG 291 FD W. B.T. & STUMP OF E. B.T. & STAKE. SET STAKE WITH HH ON N, S, E, -& W IN A MOUND. PIT 4' NW. 2663.76' TO SW COR SEC 26.-
- 1979 BARNES VOL 5 PG 547 FB #1 PG 63 STATES NOTHING ANGLE OF 89-10-56 @ NW COR FROM N 1/4 TO W 1/4 CORNERS OF SEC 26, 2666.66 FROM W 1/4 TO NW COR SEC 26, 2633.26 FROM NW COR SEC 26 TO N 1/4 COR SEC 26, ANGLE OF 89-58-58 @ NE COR SEC 27 FROM W 1/4 COR SEC 26 TO N 1/4 COR SEC 27, 2663.99 FROM NW COR SEC 26 TO N 1/4 COR SEC 27.
- 1996 BARNES VOL 6 PG 446 CALLS FOR AN ANGLE OF 88-04-41 @ NW COR FROM N 1/4 TO W 1/4 CORNERS OF SEC 26, AN ANGLE OF 91-27-46 @ SW COR FROM W 1/4 COR TO S 1/4 COR SEC 26, & ANGLE OF 179-20-12 FROM NW TO SW CORNERS OF SEC 26.

MEASURED AN ANGLE OF 89-10-55 (REC 88-04-41) @ NW COR FROM N 1/4 TO W 1/4 CORNERS OF SEC 26, AN ANGLE OF 91-27-48 (REC 91-27-46) @ SW COR FROM W 1/4 COR TO S 1/4 COR SEC 26, & ANGLE OF 179-20-08 (REC 179-20-12) @ W 1/4 COR SEC 26 FROM NW TO SW CORNERS OF SEC 26. FOUND ALUM. MONUMENT SURROUNDED BY 4 HH. SET CARSONITE & TRAVERSED TO IT. VOL 5 PG 547 CALLS FOR THE E 1/4 COR SEC 26 AS FD REMAINS OF OLD STAKE SURROUNDED BY 4 HH. REPLACED IT WITH ALUM. MON. SKETCH SHOWS MON AT FENCE "T" INTERSECTION WITH FENCE RUNNING E/W AND A N/S FENCE INTERSECTING FROM THE SOUTH. U.S. PUBLIC LAND SURVEY MONUMENT RECORD T-21 FOR THE E 1/4 COR SEC 26 CALLS FOR THE PLACING OF A POLY MON. AT THE "T" INTERSECTION OF A FENCE. THE FENCE IS A N/S FENCE WITH THE E/W INTERSECTING FENCE COMING FROM THE WEST. BASED ON THIS IT IS APPARENT THAT THE E/W COR SEC 26 IN VOL 5 PG 547 WAS ACTUARIALLY THE W 1/4 COR SEC 26.

C) Was the corner restored through acceptance of (1) an obliterated evidence location, or, (2) a found perpetuated location?

ACCEPTED FOUND PERPETUATED LOCATION.

D) Describe any material discrepancy between the location of the corner as restored or reestablished and the location of that corner as previously restored or reestablished by distance and direction. Show the discrepancy on the plan view drawing under (a), above. Show the distances between the corner as previously restored or reestablished and (1) the corner as restored or reestablished, and (2) to at least 4 of the witness monuments shown on the drawing in (a), above.

I, Donald Barnes, hereby certify that the corner location as identified by the corner code index was determined by me under my direction and control and that this U.S. Public Land Survey Monument Record is correct and complete to the best of my knowledge and belief.

seal

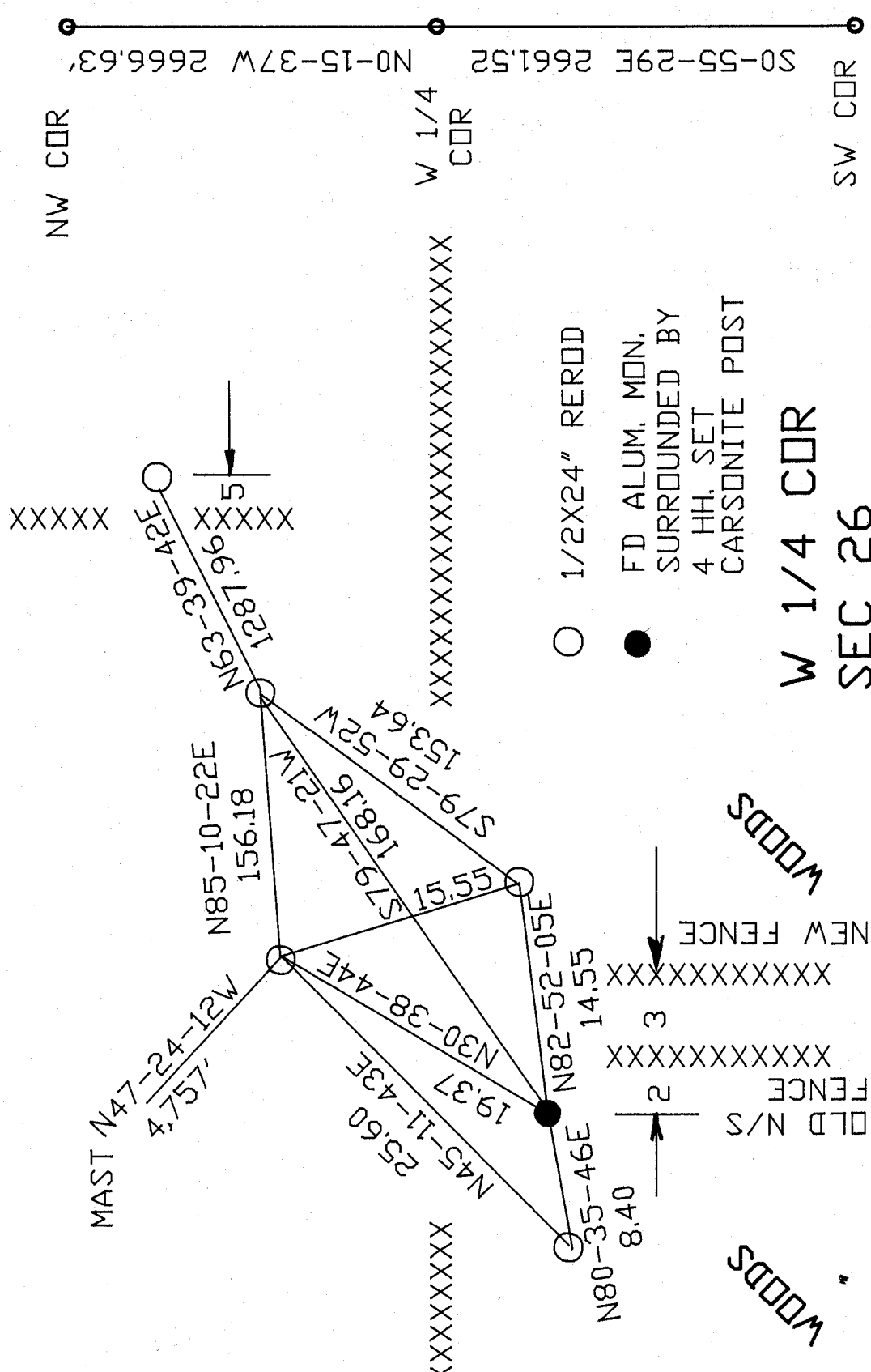
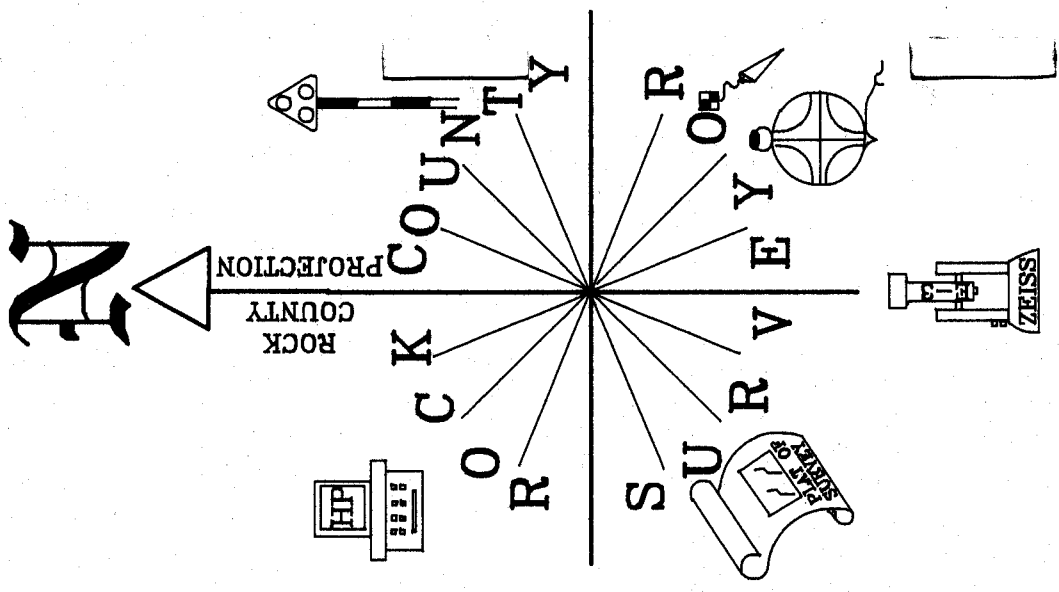


emboss

AUGUST 13 1999

Number of included sheets 1

CORNER CODE T-17



EMBOSSED
 SEAL
Donald Faunes
 August 13 1999

T-17