

U.S. PUBLIC LAND SURVEY MONUMENT RECORD

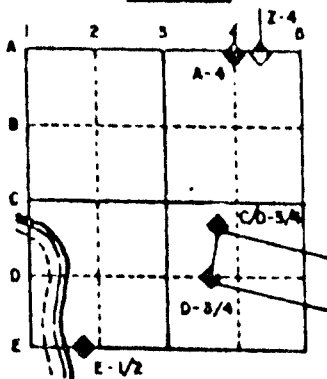
For Public Land Survey Corners in the
T. 2 N., R. 10 E.

CORNER CODE INDEX

	1	2	3	4	5	6	7	8	9	10	11	12	13	14	15	16	17	18	19	20	21	22	23	24	25
A																									
U																									
C	6																								
D		5																							
E			4																						
F				3																					
G					2																				
H	7																								
J		8																							
K			9																						
L				10																					
M					11																				
N						12																			
O	16																								
P		17																							
Q			18																						
R				19																					
S					20																				
T						21																			
U							22																		
V								23																	
W									24																
X	30	29	28	27	26	25																			
Y																									
Z																									

PLACE MONUMENT SYMBOL (◆) AT PROPER LOCATION ON ABOVE INDEX

EXAMPLE



SPRING VALLEY TWP
ROCK COUNTY WI

IF AVAILABLE
STATE PLANE COORDINATES

North (Y) _____ Eleve. (Z) _____
 East (X) _____ Zone _____
 Hor. Datum _____ Vert. Datum _____

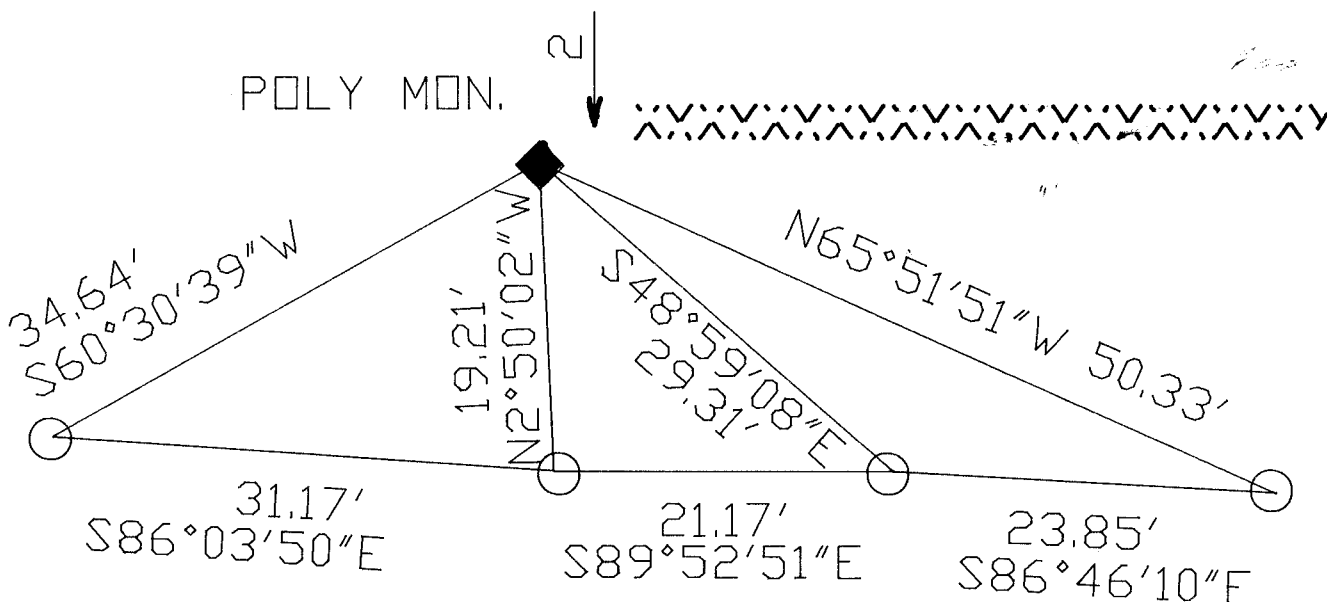
◆ CORNER MONUMENT

○ WITNESS MONUMENT

BEARINGS ARE BASED ON: ASSUMED

PLACED CARSONITE POST

POLY MON.



○ 3/4 X 24 REROD 16" DEEP WITH MAGNET
FIELD BOOK #3 PG 50

SHEET 1 OF 2

CORNER CODE: T 5

(B) Describe any record evidence, monument evidence, occupational evidence, testimonial evidence or any other material evidence you considered, and whether the monument was found or placed.

1834 MILLER SET 1/4 SEC POST. YELLOW OAK 5 S1W 495 FT, YELLOW OAK 5 S2E 469.92 FT.

1855 CHURCH VOL 1 PG 33 USED CORNER TO SUBDIVIDE SECTION 29. SHOWS THE FOLLOWING:

2640 TO SE CORNER OF SECTION 30

2649.24 TO NE CORNER OF SECTION 30

1323.96 TO S 1/16TH CORNER OF NW 1/4 OF SECTION 29

1869 LEE VOL 1 PG 351 FOUND OLD STAKE AND B.Ts. USED TO SUBDIVIDE SECTION 30. SHOWS 1336.01 TO S 1/16TH CORNER OF NE 1/4 OF SECTION 30.

1911 KERCH VOL 3 PG 66 FOUND STUMP OF SE BT, REMAINS OF SW BT AND PROBABLE REMAINS OF STAKE. SET GAS PIPE 6' LONG DISTANCE TO SW BT IS 493.5. SHOWS 1001.25 TO PROPERTY CORNER ON E/W 1/4 LINE OF SECTION 30.

DUG AND FOUND NOTHING. USED THE FENCE INTERSECTION THAT IS 1001.2 TO THE WEST TO CONTROL E/W POSITION. THIS IS IN HARMONY WITH THE FENCE INTERSECTION AT THE CENTER OF SECTION 30 AND THE S 1/16TH CORNER OF THE NE 1/4 OF SECTION 30. VOLUME 5 PAGE 126 1976 FOUND 6X6 LIMESTONE AND REFERENCED SAME. CORNER WAS DESTROYED. ALSO USED THE E/W FENCE AT THE CORNER TO CONTROL THE N/S POSITION. THIS IS IN HARMONY WITH THE FENCE INTERSECTION AT THE CENTER OF SECTION, THE S 1/16TH OF THE NE 1/4, AND THE FENCE THAT IS 1001.2 TO THE WEST. THE DISTANCE FROM THE S 1/16TH CORNER OF THE SE 1/4 OF SECTION 30 TO THE LINE BETWEEN THE EAST AND WEST QUARTER CORNER IS 2640.88. KERCH CALLS FOR A DISTANCE OF 2640.7. THE DISTANCE TO THE FENCE INTERSECTION IS 2637.9. THIS IS IN HARMONY WITH THE N/S LOCATION OF THE EAST 1/4 CORNER OF SECTION 30.

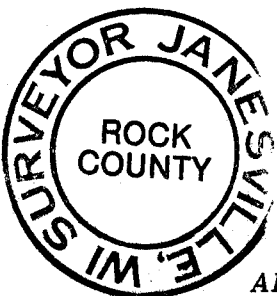
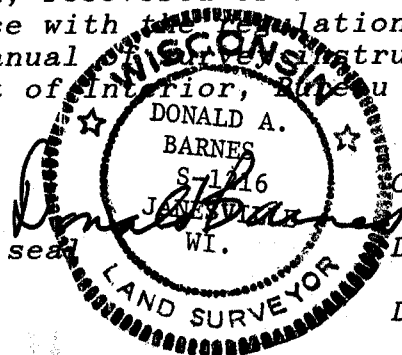
C) Was the corner restored through acceptance of (1) an obliterated evidence location, or, (2) a found perpetuated location?

THE CORNER WAS RESTORED THROUGH ACCEPTANCE OF OBLITERATED EVIDENCE LOCATION.

D) Describe any material discrepancy between the location of the corner as restored or reestablished and the location of that corner as previously restored or reestablished by distance and direction. Show the discrepancy on the plan view drawing under (a), above. Show the distances between the corner as previously restored or reestablished and (1) the corner as restored or reestablished, and (2) to at least 4 of the witness monuments shown on the drawing in (a), above.

(E) Was the corner reestablished through lost corner proportionate methods? If so, show the method, including the directions and distances to other public land survey corners used as evidence or used for proportioning the corner location.

I, Donald Barnes, hereby certify that the corner points as identified by the corner code index were, in a field survey on, JULY 2, 1991 established, re-established, monumented, re-monumented, recovered or restored as expressed below and in conformance with the regulations and rules as required in the current manual and instructions of the United States Department of Interior, Bureau of Land Management.



AFFIX YOUR LAND SURVEYOR SEAL

COUNTY SURVEYOR FILING DATA

Date of computer entry _____

Date microfilmed _____

Number of included sheets 4
CORNER CODE

75

W 1/4 COR

BARNES 1984 1485.37

SI-30-19V 2653.79

NW COR

NE COR
SEC 36 ALUM

SI-38-57W 1168.43
ORIG 1117.38

1/16TH
STONE

SI-26-13V 2685.63

W 1/4 COR

POLY

E 1/4 COR

SEC 36 ALUM

SI-20-23W 1519.84

SI-17-06V 2642.99

SW COR

SE COR
SEC 36

ORIG 1133.88
ALUM

W 1/4 COR

1311.10 BARNES 1984 1311.10
RUGER 1877 1499.52
ORIG 2831.14
S87-54-12E 1500.71
1499.52 LEE 1869 VAR 6-54
BARNES 1984 S87-54-12E 1500.63
RUGER 1877 1325.78
SI-27-30V 1326.61
RUGER 1877 1325.78
LEE 1869 2648.58 VAR 7-45
SI-27-30V 1326.61
RUGER 1877 1325.78
LEE 1869 2655.84 VAR 7-45
SI-27-30V 2657.50
LEE 1869 2655.84
RUGER 1874 2627.13
BARNES 1976 2629.40
RUGER 1874 2627.13

SEC 19

◇ COMPUTED POSITION WHICH MAY NOT REPRESENT THE ACTUAL CORNER AS MONUMENTED.
□ USED PREVIOUS FIELD MEASUREMENTS TO COMPUTE THE LOCATION.

1/16TH
COR

1308.78 LEE 1869 VAR 6-54
S87-53-55E 1310.10
BARNES 1984 1310.10

ORIG 2640
1320.79 BARNES 1984 1320.79
1318.68 LEE 1869 1318.68 VAR 6-40
S88-03-13E 2641.44

N 1/4 COR

NE COR

SI-26-52V 1329.78
RUGER 1877 1325.78
SI-26-52V 1329.78
SI-27-30V 1326.61
RUGER 1877 1325.78

1323.24
RUGER 1877 1521.96
LEE 1869 1521.96

1313.16

1326.60 LEE 1869
NO-28-22E 1331.60

RUGER 1877 1326.60
S88-24E 1312.

LEE 1869 2643.30
S0-20E 2645.7

KERCH 1335
BARNES 1976 1335 (FENCE)
LEE 1869 1336.01
1334.9

XXXXXXXXXX

LEE 1869 1336.01
KERCH 1335
1335 FENCE

1544.40 LEE 1869
S87-53-50E 1546.18
RUGER 1877 1544.40

STONE

1/16TH

FENCE INT.

KERCH 333.75
334
KERCH 1668.75
S88-00E 1668.4 (FENCE)

KERCH 1001.25
S88-18E 1001.2
(FENCE)

2640.88 1/4 LINE
2637.9 FENCE INT
KERCH 1911 2640.7

KERCH 1002.68
FENCE 1002

MON BOX

ALUM

LEE 1869 2630.10
S0-30-08V 2636.48

S0-30V 2630.3

LEE 1869 1315.38
S 1/4
COR

BARNES 1976 2674.5
KERCH 1911 2673.8
S87-44-54E 2674.47
ORIG 2640

BARNES 1976 1326.02
RUGER 1874 1324.13

S0-16-39E 2643.81
CHURCH 1855 2649.24

E 1/4 COR

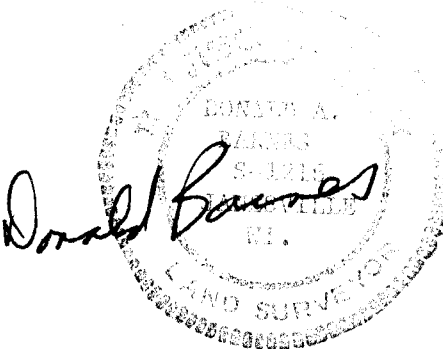
POLY

S0-25-00V 2647.53
CHURCH 1855 2640

SE COR

SEC 31

SEC 30



2 OF 2

T5