

PUBLIC LAND SURVEY MONUMENT RECORD

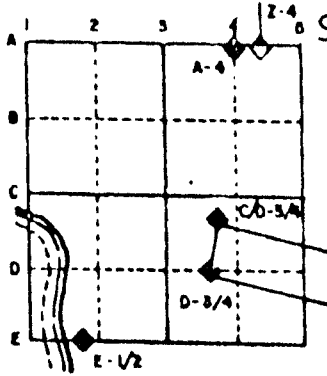
For Public Land Survey Corners in the  
T. 2 N., R. 10 E.

CORNER CODE INDEX

	1	2	3	4	5	6	7	8	9	10	11	12	13	14	15	16	17	18	19	20	21	22	23	24	25
A																									
B																									
C																									
D																									
E																									
F																									
G																									
H																									
I																									
J																									
K																									
L																									
M																									
N																									
O																									
P																									
Q																									
R																									
S																									
T																									
U																									
V																									
W																									
X																									
Y																									
Z																									

PLACE MONUMENT SYMBOL (◆) AT PROPER LOCATION ON ABOVE INDEX

EXAMPLE



SPRING VALLEY TWP  
ROCK COUNTY WI

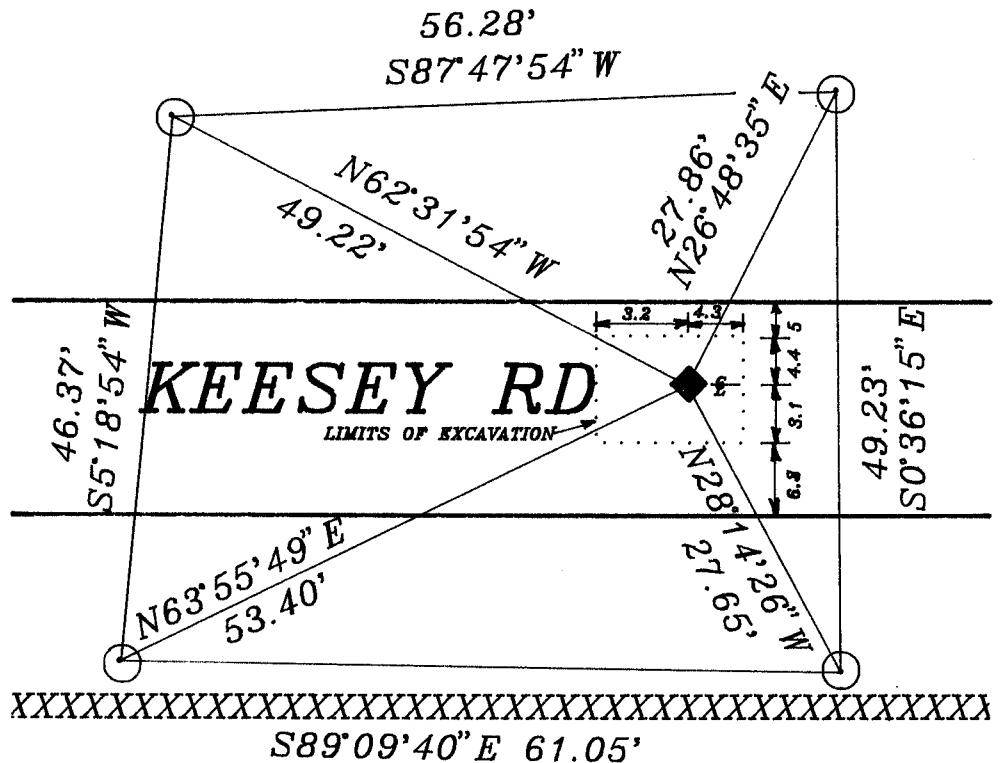
IF AVAILABLE  
STATE PLANE COORDINATES

North (Y) \_\_\_\_\_ Eleve. (Z) \_\_\_\_\_  
 East (X) \_\_\_\_\_ Zone \_\_\_\_\_  
 Hor. Datum \_\_\_\_\_ Vert. Datum \_\_\_\_\_

◆ CORNER MONUMENT

○ WITNESS MONUMENT

BEARINGS ARE BASED ON: SE CORNER OF SEC 20  
 N 89-38-39 E



○ 3/4X24 REROD WITH RED PLASTIC CAP  
FIELD BOOK #3 PG 52 & 54

○ 1349.5      ○ 1283.1      ○  
 SW COR      S 1/4 COR  
 SEC 20      SEC 20

MICROFILMED

SHEET \_\_\_ OF \_\_\_

CORNER CODE: R 7

(B) Describe any record evidence, monument evidence, occupational evidence, testimonial evidence or any other material evidence you considered, and whether the monument was found or placed.

1834 MILLER ORIGINAL SURVEYOR SET 1/4 SEC POST IN MARSH TO WIT TO MOUND. CALLS FOR 2640 TO THE SE AND SW CORNERS OF SECTION 20.

1855 CHURCH VOL 1 PG 33 USED CORNER TO SUBDIVIDE SECTION 29. CALLS FOR 2640 TO THE CENTER OF SECTION 29 AND 5306.40' TO THE S 1/4 CORNER OF SECTION 29. STATES NOTHING ABOUT THE CORNER.

DUG AND FOUND NOTHING.

C) Was the corner restored through acceptance of (1) an obliterated evidence location, or, (2) a found perpetuated location?

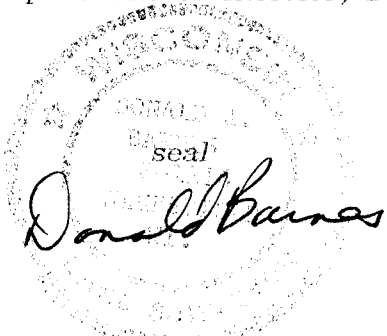
NO

D) Describe any material discrepancy between the location of the corner as restored or reestablished and the location of that corner as previously restored or reestablished by distance and direction. Show the discrepancy on the plan view drawing under (a), above. Show the distances between the corner as previously restored or reestablished and (1) the corner as restored or reestablished, and (2) to at least 4 of the witness monuments shown on the drawing in (a), above.

(E) Was the corner reestablished through lost corner proportionate methods? If so, show the method, including the directions and distances to other public land survey corners used as evidence or used for proportioning the corner location.  
CORNER WAS REESTABLISHED BY SINGLE PROPORTIONATE MEASUREMENT.

SE COR	N89-38-39E	S 1/4 COR	N89-38-39E	SE COR
SEC 20	2653.82	SEC 20	2653.82	SEC 20

I, Donald Barnes, hereby certify that the corner points as identified by the corner code index were, in a field survey on, MAY 8, 1992, established, re-established, monumented, re-monumented, recovered or restored as expressed below and in conformance with the regulations and rules as required in the current manual of survey instructions of the United States Department of Interior, Bureau of Land Management.



COUNTY SURVEYOR FILING DATA

Date of computer entry \_\_\_\_\_

Date microfilmed \_\_\_\_\_

Number of included sheets \_\_\_\_\_  
CORNER CODE

AFFIX YOUR LAND SURVEYOR SEAL

