

U.S. PUBLIC LAND SURVEY MONUMENT RECORD

For Public Land Survey Corners in:

WI ADMINISTRATIVE CODE A-E 7.08 REQUIREMENT

T. 2 N., R. 9 E

CORNER CODE INDEX

	1	2	3	4	5	6	7	8	9	10	11	12	13	14	15	16	17	18	19	20	21	22	23	24	25
A																									
B																									
C																									
D																									
E																									
F																									
G																									
H																									
J																									
K																									
L																									
M																									
N																									
O																									
P																									
Q																									
R																									
S																									
T																									
U																									
V																									
W																									
X																									
Y																									
Z																									

PLACE MONUMENT SYMBOL AT PROPER LOCATION ON ABOVE INDEX

Decatur TWP
~~ROCK COUNTY WI~~

Green IF AVAILABLE
ROCK COUNTY COORDINATES PREFERRED

North _____ Elev. _____

East _____

Hor. Datum _____ Vert. Datum _____

LATITUDE _____ ELLIPS. HT. _____

LONGITUDE _____

GPS (X) _____ TRAVERSE (X) _____

BASED ON THE FOLLOWING CONTROL:

CORNER MONUMENT WITNESS MONUMENT

(a)

KHADER ABU AL-EIS WITH THE WISCONSIN DEPARTMENT OF TRANSPORTATION WAS THE PROJECT ENGINEER FOR THE STH 104 PROJECT. HE REVISED EXISTING TIE SHEETS OF GREEN COUNTY'S PLSS CORNERS AND SENT THEM TO THE ROCK COUNTY SURVEYOR. THE REVISED SHEET IS TAPED TO THE BACK SIDE.

AUGUST 13, 1996

DONALD BARNES, ROCK COUNTY SURVEYOR

BEARINGS ARE BASED ON:

FIELD BOOK _____ PAGE # _____

SHEET _____ OF _____

SHOW A PLAN VIEW DRAWING DEPICTING THE CORNER MONUMENT AND SURROUNDING PHYSICAL FEATURES, INCLUDING THE EXCAVATION AREA AND DEPTH.

PLANNING & ZONING COMMITTEE ADOPTED THE ABOVE FORM ON 12/2/1982

CORNER CODE M-001



Filed: Spring Valley Twsp., Rock County

SECTION CORNER TIES

TO THE EAST 1/4 CORNER OF SECTION 24, TOWN 2 NORTH, RANGE 9 EAST,
GREEN COUNTY, WISCONSIN.

NOTE: TOP OF MONUMENT AT GRADE.

LEGEND

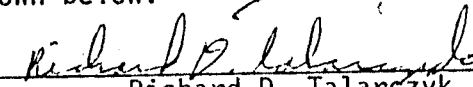
-  CAST ALUMINUM MONUMENT
-  #10 x 30" IRON ROD

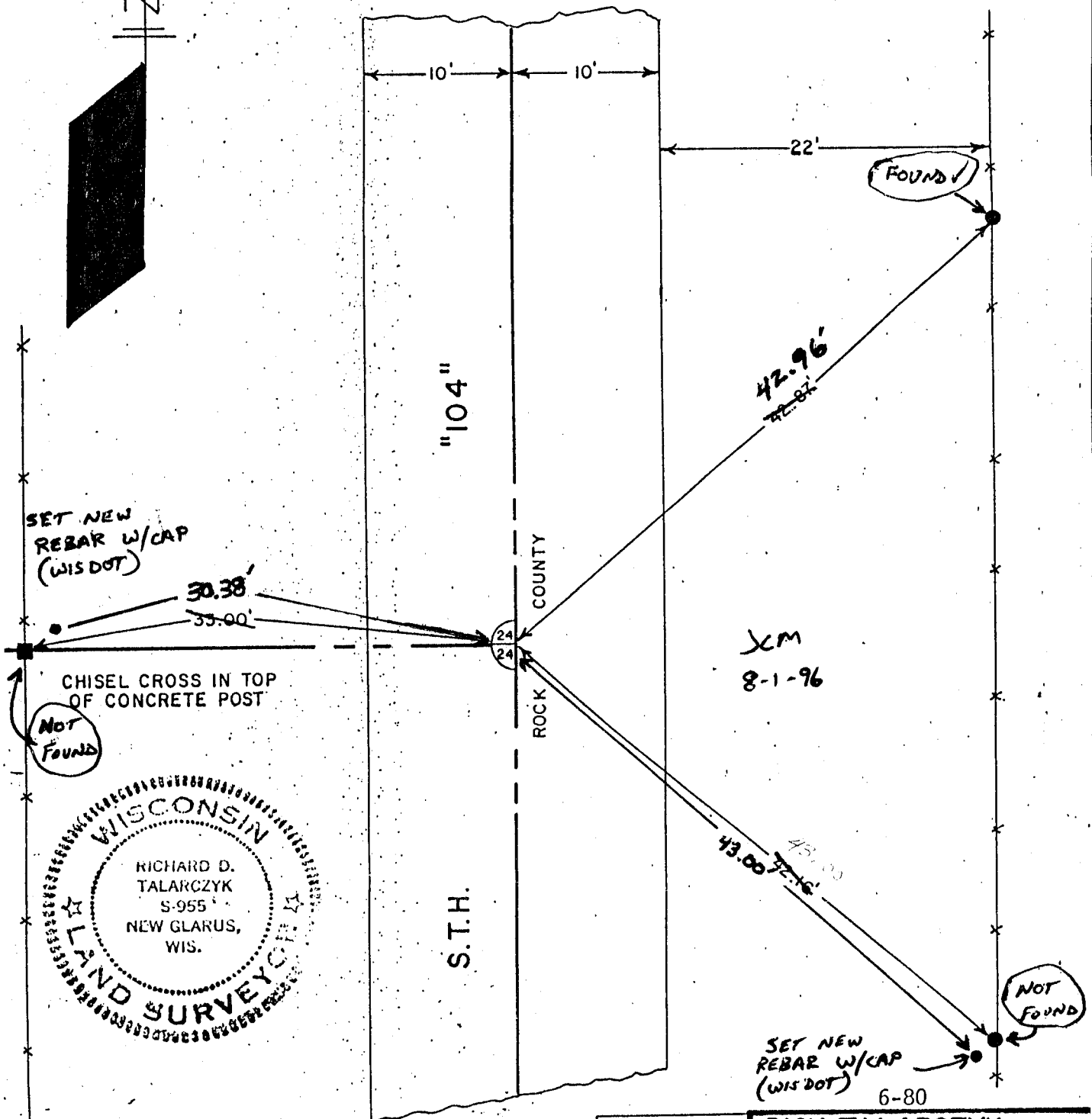
SCALE 1" = 10'

I, Richard D. Talarczyk, hereby certify that I have complied with the Wisconsin Statutes, Statutes of the United States, and the rules and regulations made by the Secretary of the Interior in the location of the corner shown below.

11-10-77

Revised 2/22/84 RDT


Richard D. Talarczyk



Corner set by Proportionate
Measurement & Existing
Physical Evidence.

DRAWN BY R M	DICK TALARCZYK LAND SURVEYING RT. 1 NEW GLARUS, WISC. 53574 PHONE (608) 527-5216
CHECKED RDT	
JOB NO. 0174	
BOOK PAGE	