

For Public Land Survey Corners in the

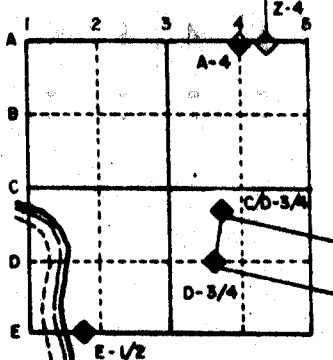
T. 2 N., R. 10 E.

CORNER CODE INDEX

	1	2	3	4	5	6	7	8	9	10	11	12	13	14	15	16	17	18	19	20	21	22	23	24	25
A																									
B																									
C																									
D																									
E																									
F																									
G																									
H																									
I																									
J																									
K																									
L																									
M																									
N																									
O																									
P																									
Q																									
R																									
S																									
T																									
U																									
V																									
W																									
X																									
Y																									
Z																									

PLACE MONUMENT SYMBOL (◆) AT PROPER LOCATION ON ABOVE INDEX

EXAMPLE



SPRING VALLEY TWP

ROCK COUNTY WI

IF AVAILABLE STATE PLANE COORDINATES

232,683.61 North (Y) 232,345.24 Eleve. (Z) _____
 S.T.H East (X) 2,170,345.24 Zone _____

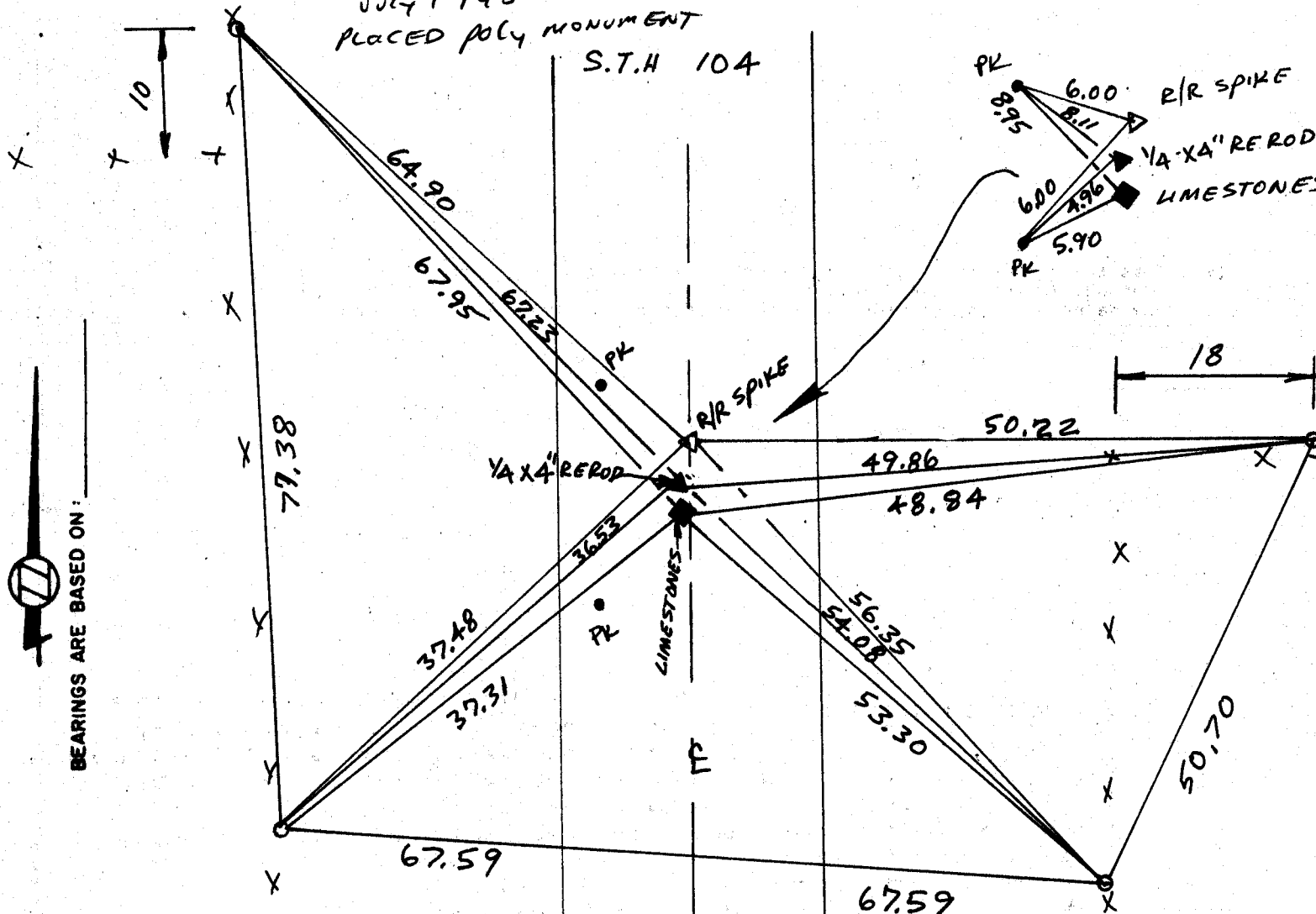
Hor. Datum _____ Vert. Datum _____
 PROJECT E-1/4 24 T2N R9E S.7.H
1704-04-22 231,522.02 2,170,359.31

(o.)

◆ CORNER MONUMENT

○ WITNESS MONUMENT 1/2 X 24" RE ROD

July 1 1987
 PLACED POLY MONUMENT
 S.T.H 104



BEARINGS ARE BASED ON:

FIELD BOOK 2 PAGE # 54

MICROFILMED

SHOW A PLAN VIEW DRAWING DEPICTING THE CORNER MONUMENT AND SURROUNDING PHYSICAL FEATURES, INCLUDING THE EXCAVATION AREA AND DEPTH. THE CORNER MONUMENT SHALL HAVE THE FOLLOWING CHARACTERISTICS: 1) HAVE AT LEAST TWO PREDETERMINED BREAK-OFF POINTS. 2) IF BROKEN, LEAVE A PERMANENTLY MAGNETIZED REMNANT AT THE ORIGINAL POINT. 3) MUST BE EXTENDABLE. 4) THE CAP IS INSCRIBED: ROCK COUNTY SURVEY MONUMENT - PENALTY FOR DISTURBING MARKER. 5) OR AN EXISTING CUT LIMESTONE. AN IRON PIPE 1/2" x 4'0" (MINIMUM) MAY BE USED IN AREAS WHERE GROUND WATER IS WITHIN ONE FOOT OF THE SURFACE. IF THE CORNER IS OCCUPIED BY AN IMPROVEMENT (MANHOLE, BURIED CABLE, ETC.) ANY DURABLE, DISTINCT MONUMENT MAY BE USED. CORNERS SHALL BE REFERENCED WITH AT LEAST 4 DURABLE WITNESS MONUMENTS. WITNESS MONUMENTS SHALL BE MADE OF CONCRETE, NATURAL STONE, IRON OR OTHER EQUALLY DURABLE MATERIAL, EXCEPT WOOD. DESCRIBE THE CORNER AND THE WITNESS MONUMENTS.

CORNER CODE:

41

(b.) Describe any records or any other material evidence you considered, and whether the same was found or placed.

1866 S.D. LOCKE VOL 1 PG 256 placed stake with line on N & S and smaller line on E & W. MAP SHOWS THAT THE CORNER IS ON LINE WITH THE NW & SW CORNERS AT MID POINT.

1934 SUNNY VOL 3 PG 254 SHOWS A DISTANCE FROM THE SW CORNER TO THE E/W FENCE NEAR THIS CORNER.

1977 TALARCZYK (PLAT OF SURVEY) PLACED R/R SPIKE ON TOWN LINE IN LINE WITH FENCE TO THE EAST. MAP SHOWS THAT THE TOWN LINE WAS THE LINE BETWEEN THE NE CORNER OF SECTION 24 GREEN COUNTY AND THE SW CORNER OF SECTION 18

(c.) Was the corner restored through acceptance of (1) an obliterated evidence location, or, (2) a found perpetuated location?

ACCEPTED FOUND PERPETUATED LOCATION.

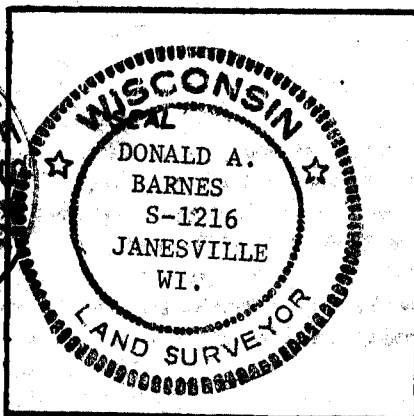
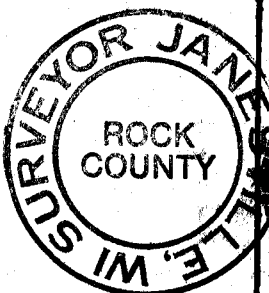
TALARCZYK'S R/R SPIKE IS 2.63' NORTH AND 1.72' WEST OF THE LIMESTONES.

(d.) Describe any material discrepancy between the location of the corner as restored or reestablished and the location of that corner as previously restored or reestablished by distance and direction. Show the discrepancy on the plan view drawing under (a), above. Show the distances between the corner as previously restored or reestablished and (1) the corner as restored or reestablished, and (2) to at least 4 of the witness monuments shown on the drawing in (a), above.

DISCREPANCY IS SHOWN IN THE MAP ON THE OTHER SIDE OF THE PAGE.

(e.) Was the corner reestablished through lost corner proportionate methods? If so, show the method, including the directions and distances to other public land survey corners used as evidence or used for proportioning in determining the corner location.

I, Donald Barnes, hereby certify that the corner points as identified by the corner code index were, in a field survey on APRIL 23, 1987, established, re-established, monumented, re-monumented, recovered or restored as expressed below and in conformance with the regulations and rules as required in the current manual of survey instructions of the United States Department of Interior, Bureau of Land Management.



COUNTY SURVEYOR FILING DATA

Date of Computer Entry _____

Date Received _____

Date Microfilmed _____

Treasurer's Receipt No. _____

Number of Included Sheets _____

AFFIX YOUR LAND SURVEYOR SEAL. CORNER CODE 41