

# U.S. PUBLIC LAND SURVEY MONUMENT RECORD

For Public Land Survey Corners in:

WI ADMINISTRATIVE CODE A-E 7.08 REQUIREMENT

T. 2 N., R. 10 E

### CORNER CODE INDEX

A	1	2	3	4	5	6	7	8	9	10	11	12	13	14	15	16	17	18	19	20	21	22	23	24	25
B																									
C	6				5				A		3						2							1	
D																									
E																									
F																									
G	7				8				9		10						11							12	
H																									
J																									
K																									
L	18				17				16		15						14							13	
M																									
N																									
O																									
P	19				20				21		22						23							24	
Q																									
R																									
S																									
T	30				29				28		27						26							25	
U																									
V																									
W																									
X	31				32				33		34						35							36	
Y																									
Z																									

PLACE MONUMENT SYMBOL  AT PROPER LOCATION ON ABOVE INDEX

SPRING VALLEY TWP

ROCK COUNTY WI

IF AVAILABLE  
ROCK COUNTY COORDINATES PREFERRED

North \_\_\_\_\_ Elev. \_\_\_\_\_

East \_\_\_\_\_

Hor. Datum \_\_\_\_\_ Vert. Datum \_\_\_\_\_

LATITUDE \_\_\_\_\_ ELLIPS. HT. \_\_\_\_\_

LONGITUDE \_\_\_\_\_

GPS (X) \_\_\_\_\_ TRAVERSE (X) \_\_\_\_\_

BASED ON THE FOLLOWING CONTROL:

CORNER MONUMENT       WITNESS MONUMENT

(a)

BEARINGS ARE BASED ON:

FIELD BOOK \_\_\_\_\_ PAGE # \_\_\_\_\_

SHEET 1 OF 2

SHOW A PLAN VIEW DRAWING DEPICTING THE CORNER MONUMENT AND SURROUNDING PHYSICAL FEATURES, INCLUDING THE EXCAVATION AREA AND DEPTH.

PLANNING & ZONING COMMITTEE ADOPTED THE ABOVE FORM ON 12/2/1982

CORNER CODE 59

SP545

(B) Describe any record evidence, monument evidence, occupational evidence, testimonial evidence or any other material evidence you considered, and whether the monument was found or placed.

1855 CHURCH VOL 1 PG 42 STATES NOTHING ABOUT MONUMENT. CALLS FOR 2674.32 VAR 7 40/60 TO S 1/4 COR SEC 8.

1855 CHURCH VOL 1 PG 44 STATES NOTHING ABOUT MONUMENT BUT CALLS FOR 2584.56 TO S 1/4 COR SEC 9.

1857 BROWN VOL 1 PG 73 STATES NOTHING ABOUT MONUMENT BUT CALLS FOR 2625.48 TO W 1/4 COR SEC 16, 2594.44 VAR 6 1/2 TO N 1/4 COR SEC 16. SHOWS THE N 1/4 COR SEC 16 ON LINE BETWEEN THE NW & NE CORNERS OF SEC 16.

1866 LOCKE VOL 1 PG 252 FOUND STAKE & BTS CALLS FOR 2598.55 TO N 1/4 COR SEC 16.

1934 SUNNY VOL 3 PG 255 2632.5 TO FENCE AT W 1/4 COR SEC 16, 2601.55 TO N 1/4 COR SEC 16, ANGLE OF 89-48-22 FROM N 1/4 TO W 1/4 COR SEC 16, & 2741.5 TO FENCE AT S 1/4 COR SEC 8.

1978 BARNES VOL 5 PG 490 SET ALUM. MON.

1984 BARNES VOL 6 PG 313 FOUND ALUM MON. 2661.84 TO E 1/4 COR SEC 8.

FOUND ALUM. MON. & REFERENCED SAME.

C) Was the corner restored through acceptance of (1) an obliterated evidence location, or, (2) a found perpetuated location?  
ACCEPTED FOUND ALUM. MON.

D) Describe any material discrepancy between the location of the corner as restored or reestablished and the location of that corner as previously restored or reestablished by distance and direction. Show the discrepancy on the plan view drawing under (a), above. Show the distances between the corner as previously restored or reestablished and (1) the corner as restored or reestablished, and (2) to at least 4 of the witness monuments shown on the drawing in (a), above.

(E) Was the corner reestablished through lost corner proportionate methods? If so, show the method, including the directions and distances to other public land survey corners used as evidence or used for proportioning the corner location.

I, Donald Barnes, hereby certify that the corner location as identified by the corner code index was determined by me under by direction and control and that this U.S. Public Land Survey Monument Record is correct and complete to the best of my knowledge and belief.

seal

Number of included sheets \_\_\_\_\_

emboss

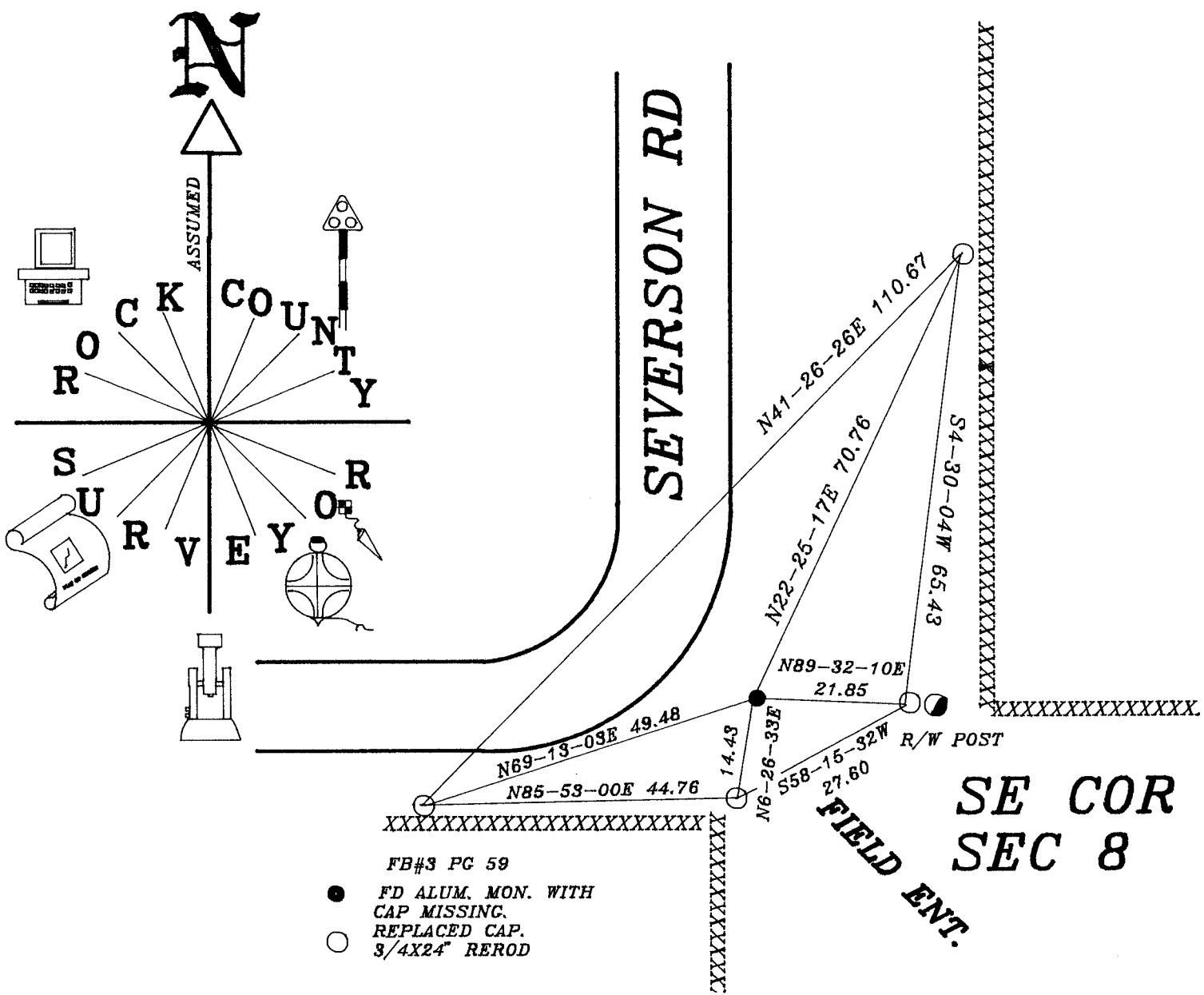
CORNER CODE

*Donald Barnes*

A-E 7.08 REQUIREMENT

6/25/96

59



Donald Baines  
6/21/96