

U.S. PUBLIC LAND SURVEY MONUMENT RECORD

For Public Land Survey Corners in:

WI ADMINISTRATIVE CODE A-E 7.08 REQUIREMENT

T. 2 N., R. 10 E

CORNER CODE INDEX

A	1	2	3	4	5	6	7	8	9	10	11	12	13	14	15	16	17	18	19	20	21	22	23	24	25
B																									
C	6						5								4										1
D																									
E																									
F																									
G	7						8								10										12
H																									
I																									
J																									
K																									
L	18						11								15										13
M																									
N																									
O																									
P	19						20								22										24
Q																									
R																									
S																									
T	30						29								21										25
U																									
V																									
W																									
X	31						32								34										36
Y																									
Z																									

PLACE MONUMENT SYMBOL AT PROPER LOCATION ON ABOVE INDEX

SPRING VALLEY TWP

ROCK COUNTY WI

IF AVAILABLE
ROCK COUNTY COORDINATES PREFERRED

North _____ Elev. _____

East _____

Hor. Datum _____ Vert. Datum _____

LATITUDE _____ ELLIPS. HT. _____

LONGITUDE _____

GPS (X) _____ TRAVERSE (X) _____

BASED ON THE FOLLOWING CONTROL:

CORNER MONUMENT

WITNESS MONUMENT

(a)

BEARINGS ARE BASED ON:

FIELD BOOK _____ PAGE # _____

SHEET 1 OF 3

SHOW A PLAN VIEW DRAWING DEPICTING THE CORNER MONUMENT AND SURROUNDING PHYSICAL FEATURES, INCLUDING THE EXCAVATION AREA AND DEPTH.

PLANNING & ZONING COMMITTEE ADOPTED THE ABOVE FORM ON 12/2/1982

CORNER CODE J-7

SP544 S 1/4 CORNER SEC 8 SPRING VALLEY T2N R10E

(B) Describe any record evidence, monument evidence, occupational evidence, testimonial evidence or any other material evidence you considered, and whether the monument was found or placed.

1834 MILLER, ORIGINAL SURVEYOR

"EAST RANDOM BETWEEN SECTIONS 8 & 17

1089' ENTER MARSH @ SW

2508' LEAVE SAME

5337.42' INTERSECTED SEC. LINE 20.46' SOUTH OF POST.

WEST CORRECTED BETWEEN SECTIONS 8 & 17

1273.8' BUR OAK 12 IN DIA

2412.3' BUR OAK 15 IN DIA

2668.38' SET 1/4 SEC POST BUR OAK N19W 33' & BUR OAK 8 S18E
11.22'

4231.92' BUR OAK 18 IN DIA

4652.34' BUR OAK 12 IN DIA

5337.42' SEC CORNER"

1855 CHURCH CALLS FOR BUR OAK S59W 31.68' & BUR OAK S17 1/2W 57.42', VAR 7 40/60
2674.32' TO SE CORNER OF SEC 8, 2674.32' TO SW CORNER OF SEC 8, 2640' TO CENTER
OF SEC 8, WEST 536.58' TO PROPERTY CORNER, & 5280' TO N 1/4 CORNER SEC 8.

1866 LOCKE VOL 1 PG 257 "FOUND STUMPS OF BTs & OLD STAKE. SET STAKE WITH HH
34"X22"X12" ON W, HH 26"X18"X12" ON S.E. & HH 18"X14"X12" ON N.E.", VAR 6-45
2618.88' TO SW CORNER OF SEC 8, VAR 6-35 2642.64' TO CENTER OF SEC 8 (CENTER
ESTABLISHED BY EQUAL DISTANCE METHOD), & WEST 589.25' TO A STAKE WITH HH ON
N.S.E. & W.

1879 RUGER VOL 2 PG 263 "FOUND STAKE & STONES AT CORNER ESTABLISHED BY LOCKE. FOUND
WHERE WITNESS TREE STUMPS HAD BEEN DUG UP. CORNER AT THE INTERSECTION OF
FENCES. VAR 6-42 TO CENTER OF SEC 8. (SUBDIVIDED SECTION 8). LOCKE & CHURCH
HAD SUBDIVIDED THE SECTION UNDER THE STATE LAW FIXING THE CENTER EQUI-DISTANT
FROM THE OPPOSITE CORRESPONDING 1/4 CORNERS. I ESTABLISHED THE CENTRE AT THE
POINT OF INTERSECTION OF RIGHT LINES BETWEEN THE CORRESPONDING QUARTERS
CORNERS."

1879 RUGER VOL 2 PG 253 FOUND CORNER ESTABLISHED BY LOCKE. (SUBDIVIDED SEC 17). N/S
1/4 LINE VAR 7-15.

196? COMBS FIELD BOOK 136 PG 48 CALLS FOR 1314.3' FROM N/S FENCE NEAR SW CORNER SEC
8 TO N/S FENCE NEAR S 1/16TH CORNER OF SW 1/4 OF SEC 8, 1309.44' FROM N/S FENCE
NEAR S 1/16TH CORNER OF SW 1/4 OF SEC 8 TO N/S FENCE NEAR S 1/4 COR SEC 8, &
30' FROM N/S FENCE AT S 1/4 COR SEC 8 TO N/S FENCE TO THE EAST.

1978 BARNES DUG & FOUND HHs EVERYWHERE. CALLS FOR 624' FROM N/S FENCE TO MOST
EASTERLY N/S FENCE NEAR S 1/4 COR SEC 8, 1342.5' FROM MOST EASTERLY N/S FENCE
TO N/S FENCE NEAR S 1/16TH COR OF SE 1/4 OF SEC 8, & 1399' FROM N/S FENCE NEAR
S 1/16TH COR OF SE 1/4 OF SEC 8 TO SE CORNER OF SEC 8.

DUG LARGE HOLE WITH BACK HOE AND FOUND HARD HEADS OF RECORD LAYING FLAT. PLACED POLY
MONUMENT IN CENTER OF HARD HEADS WITH CARSONITE POST NEXT TO MONUMENT.

C) Was the corner restored through acceptance of (1) an obliterated evidence
location, or, (2) a found perpetuated location?

ACCEPTED FOUND HARDHEADS. THEY ARE IN HARMONY WITH THE NW CORNER OF SEC 17, THE
MONUMENTS FOUND AT THE N 1/4 COR SEC 8, THE CENTER OF SEC 8, AND THE W 1/16TH CORNER
OF THE NE 1/4 OF SEC 8, AND THE FENCE 598.8' TO THE WEST.

D) Describe any material discrepancy between the location of the corner as restored
or reestablished and the location of that corner as previously restored or
reestablished by distance and direction. Show the discrepancy on the plan view
drawing under (a), above. Show the distances between the corner as previously
restored or reestablished and (1) the corner as restored or reestablished, and (2) to
at least 4 of the witness monuments shown on the drawing in (a), above.

NONE.

E) Was the corner reestablished through lost corner proportionate methods? If so,
show the method, including the directions and distances to other public land survey
corners used as evidence or used for proportioning the corner location.

NO.

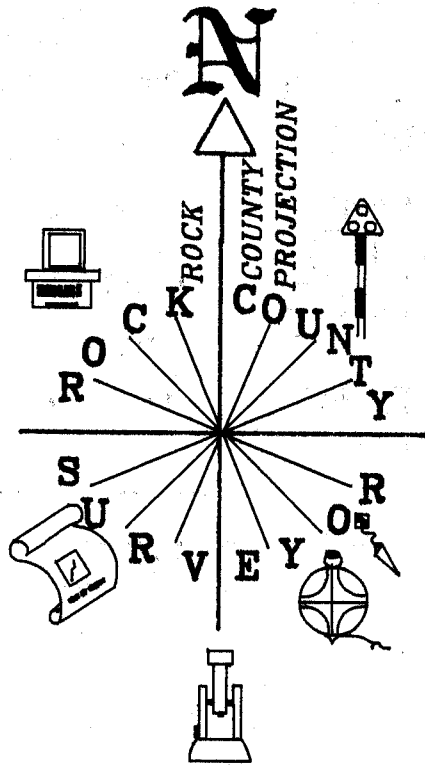
I, Donald Barnes, hereby certify that the corner location as identified by the corner
code index was determined by me under my direction and control and that this U.S.
Public Land Survey Monument Record is correct and complete to the best of my
knowledge and belief.

Donald Barnes
seal

Dec 2, 1996
emboss

A-E 7.08 REQUIREMENT

J-7
CORNER CODE



NW COR

N89-59-15E 2666.98
RUGER 1879 2654.52
RUGER 1879 VAR 5-32
MILLER 1834 2664.42

N 1/4
FD L.S.

RUGER 1879 2660.46
RUGER 1879 VAR 5-00
MILLER 1834 2665.08

NE COR

N1-15-07W 2651.37
RUGER 1879 2644.46
LEE 1868 2654.52
LEE 1868 VAR 8-00
LOCKE 1866 2647.92
MILLER 1834 2640

W 1/4
FD PIPE

S89-33-00E 2645.83
LOCKE 1866 2694.91
LOCKE 5389.82
S-31-24E 5400.63

SO-47-49W SO-47-42W
1325.90 1327.95
CHURCH 1855 2640

LOCKE 5285.28
NO-47-34W 5294.77
NO-47-24W 2640.92
CHURCH 1855 2640
LOCKE 1866 VAR 6-35
LOCKE 2642.64 1323.14 RUGER 1323.14

SEC 8

S89-29-51E 2754.80
LOCKE 1866 2694.91
RUGER 1879 2740.32
BARNES 1984 2754.76

MILLER 1834 2640

E 1/4

FD PIN & TIES

MILLER 1834 2640
BARNES 1984 2661.84
NO-52-55W 2661.87

FD STONE

MILLER 1834 2669.04

MILLER 1834 2668.38

FD ALUM

SW COR

2674.32 CHURCH 1855 VAR 7-40/60 2674.32
2618.88 LOCKE 1866 VAR 6-45
S89-45-58E 2624.25

S89-03-54E 2759.62

SE COR

CHURCH 1855 5348.64
S89-24-24E 5383.77

EMBOSS SEAL
Donald Barnes

J-7

U.S. PUBLIC LAND SURVEY MONUMENT RECORD

For Public Land Survey Corners in:

WI ADMINISTRATIVE CODE A-E 7.08 REQUIREMENT

T. 2 N., R. 10 E

CORNER CODE INDEX

A	1	2	3	4	5	6	7	8	9	10	11	12	13	14	15	16	17	18	19	20	21	22	23	24	25
B	6																								
C																									
D																									
E																									
F																									
G	7	8	9	10	11	12																			
H																									
I																									
J																									
K	18	17	16	15	14	13																			
L																									
M																									
N																									
O																									
P	19	20	21	22	23	24																			
Q																									
R																									
S																									
T																									
U	30	29	28	27	26	25																			
V																									
W																									
X																									
Y	31	32	33	34	35	36																			
Z																									

SPRING VALLEY TWP
ROCK COUNTY WI

IF AVAILABLE
ROCK COUNTY COORDINATES PREFERRED

North _____ Elev. _____

East _____

Hor. Datum _____ Vert. Datum _____

LATITUDE _____ ELLIPS. HT. _____

LONGITUDE _____

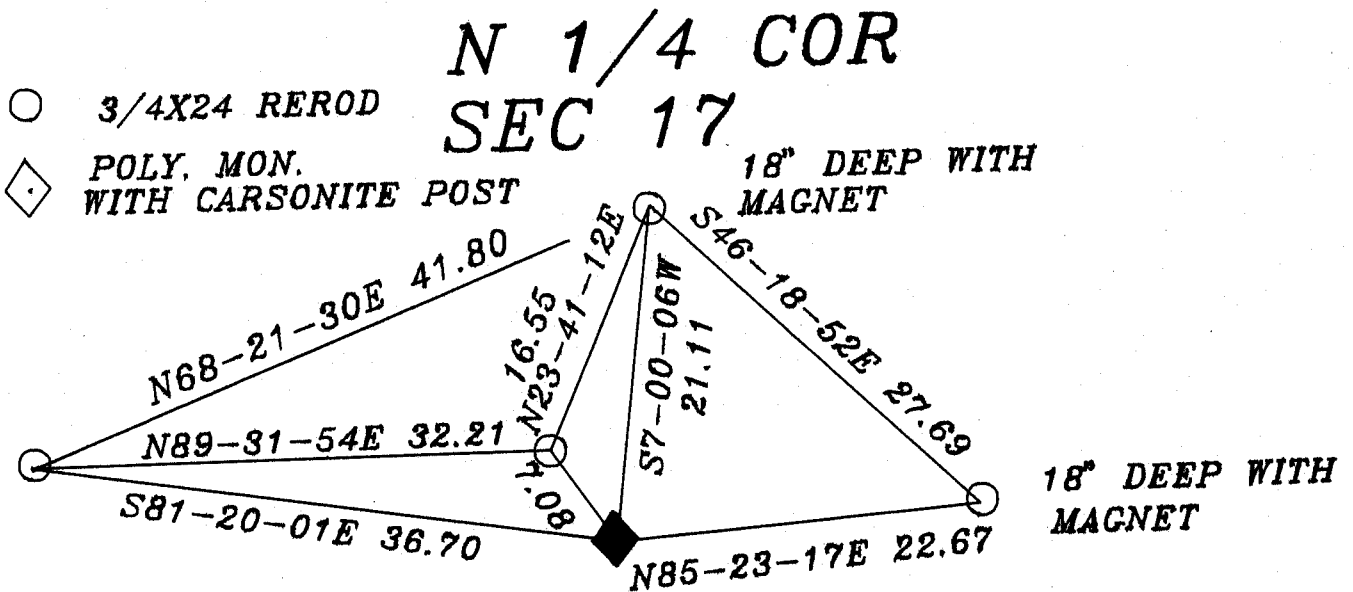
GPS (X) _____ TRAVERSE (X) _____

BASED ON THE FOLLOWING CONTROL:

PLACE MONUMENT SYMBOL AT PROPER LOCATION ON ABOVE INDEX

CORNER MONUMENT WITNESS MONUMENT

BEARINGS ARE BASED ON: COUNTY PROJECTION



OBSERVATION SHEET STA #110

Donald Jones
Dec 2, 1986

FIELD BOOK _____ PAGE # _____

SHEET 2 OF 2

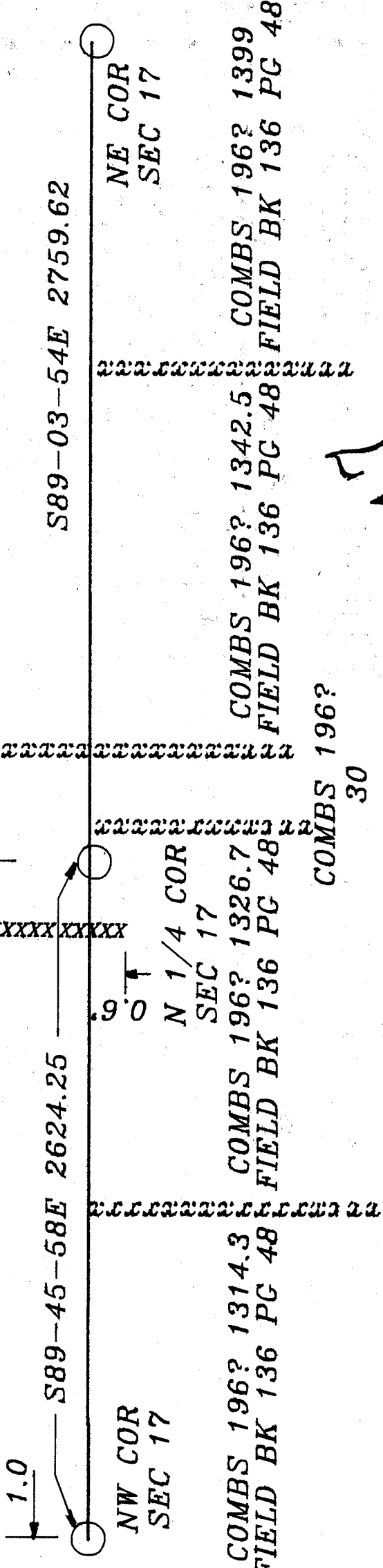
SHOW A PLAN VIEW DRAWING DEPICTING THE CORNER MONUMENT AND SURROUNDING PHYSICAL FEATURES, INCLUDING THE EXCAVATION AREA AND DEPTH.

PLANNING & ZONING COMMITTEE ADOPTED THE ABOVE FORM ON 12/2/1982

CORNER CODE J-7

xxxxxxxxxxxxxx

8
SEC



CHURCH 586.57
LOCKE 589.25
598.8

XXXXXXXXXXXX

XXXXXXXXXXXX

XXXXXXXXXXXX

XXXXXXXXXXXX

XXXXXXXXXXXX

xxxxxxxxxxxxxxxxxxxxxxxx

Donald Barnes
Dec 2, 1996

SEC

N/S FENCE LINE IS DESTROYED & AREA IS PLOWED FIELD.

J-7