

# U.S. PUBLIC LAND SURVEY MONUMENT RECORD

For Public Land Survey Corners in:

WI ADMINISTRATIVE CODE A-E 7.08 REQUIREMENT

T. 2 N., R. 10 E

CORNER CODE INDEX

A	1	2	3	4	5	6	7	8	9	10	11	12	13	14	15	16	17	18	19	20	21	22	23	24	25
B																									
C	6																								
D																									
E																									
F																									
G	1																								
H																									
I																									
J																									
K	18																								
L																									
M																									
N																									
O																									
P	19																								
Q																									
R																									
S																									
T																									
U	30																								
V																									
W																									
X	31																								
Y																									
Z																									

SPRING VALLEY TWP  
ROCK COUNTY WI

IF AVAILABLE  
ROCK COUNTY COORDINATES PREFERRED

North \_\_\_\_\_ Elev. \_\_\_\_\_

East \_\_\_\_\_

Hor. Datum \_\_\_\_\_ Vert. Datum \_\_\_\_\_

LATITUDE \_\_\_\_\_ ELLIPS. HT. \_\_\_\_\_

LONGITUDE \_\_\_\_\_

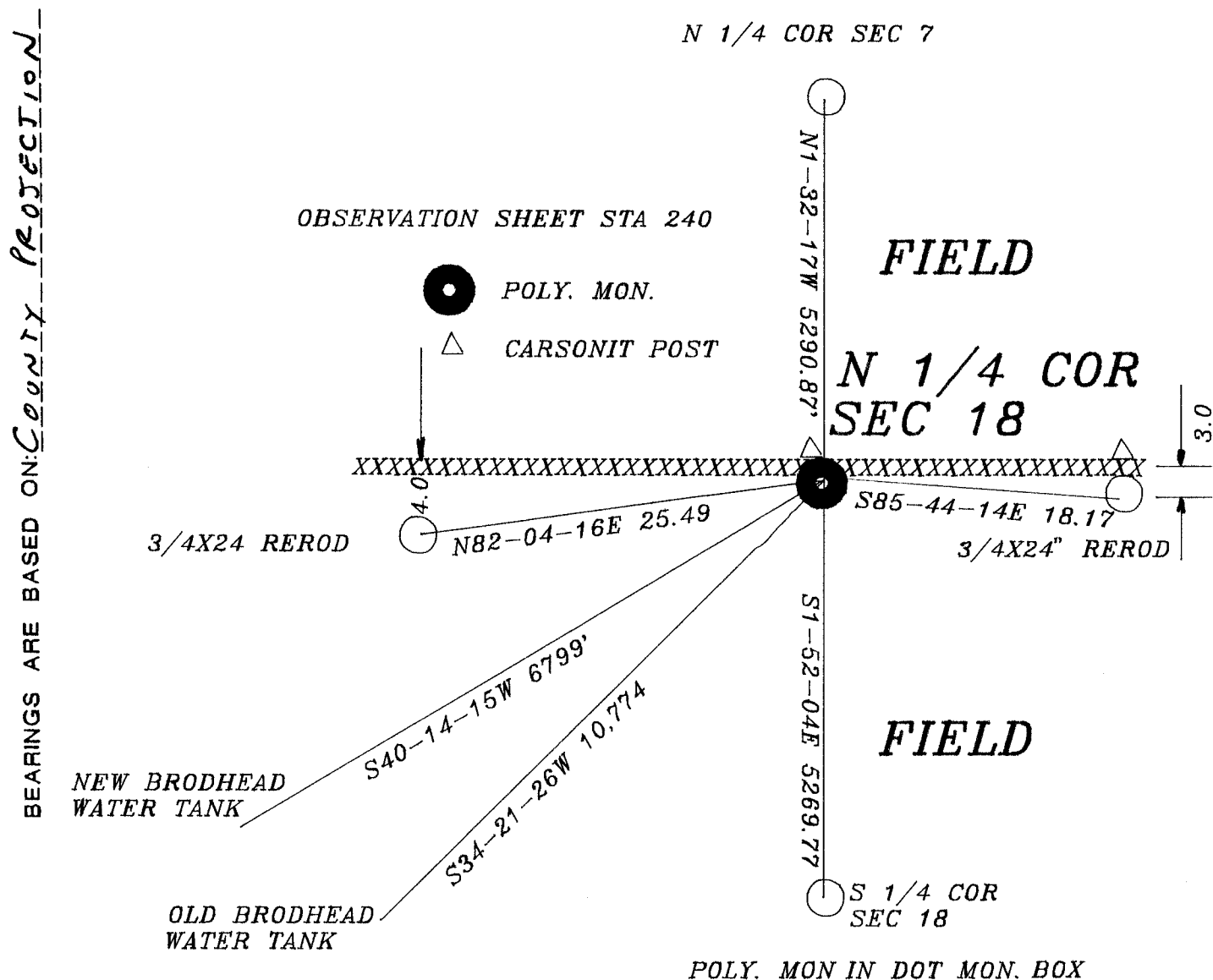
GPS (X) \_\_\_\_\_ TRAVERSE (X) \_\_\_\_\_

BASED ON THE FOLLOWING CONTROL:

PLACE MONUMENT SYMBOL **◆** AT PROPER LOCATION ON ABOVE INDEX

**◆** CORNER MONUMENT      **○** WITNESS MONUMENT

(a)



FIELD BOOK \_\_\_\_\_ PAGE # \_\_\_\_\_

SHEET 1 OF 3

SHOW A PLAN VIEW DRAWING DEPICTING THE CORNER MONUMENT AND SURROUNDING PHYSICAL FEATURES, INCLUDING THE EXCAVATION AREA AND DEPTH.

PLANNING & ZONING COMMITTEE ADOPTED THE ABOVE FORM ON 12/2/1982

CORNER CODE J-3

SP542

(B) Describe any record evidence, monument evidence, occupational evidence, testimonial evidence or any other material evidence you considered, and whether the monument was found or placed.

- 1834 MILLER WEST RANDOM BETWEEN SECS 7 & 18.  
3036' ENTER ARM OF MARSH S.E  
4488' LEAVE SAME  
5082 ENTER PRAIRIE  
5373.06' INTERSECTED RANGE LINE 1160.28' NORTH OF POST.  
EAST CORRECTED BETWEEN SECS 7 & 18  
SET POST COR OF SECS 7 & 18, B.O. 14 IN S88-30E 234.3', B.O. 14 IN  
S76E 267.96'  
2737.02' SET 1/4 SEC POST. WHITE OAK 24 IN S69E 17.16' & WHITE  
OAK 24 IN N52W 101.64' (LOCKE N54W 152)  
2737.02' SEC. COR.
- 1866 LOCKE VOL 1 PG 255 FOUND E. BT & STUMP OF W. B.T. & STAKE (W. BT  
IS N54W 152- ORIG N52W 101.64'). SET STAKE WITH SAND HARDHEAD ON  
NORTH, LIMESTONE ON SOUTH, RED HH ON WEST, & BROWN HH ON EAST.  
SET CENTER OF SEC 18 BY EQUAL DISTANCE METHOD. CALLS FOR 2633.90  
TO CENTER OF SEC 18 & VAR 8- 2623.37' TO NE COR SEC 18.
- 1868 LEE VOL 1 PG 336 FOUND STAKE SET BY LOCKE. USED TO SUBDIVIDE  
SECTION 7.
- 1879 RUGER VOL 2 PG 265 FOUND COR. SET BY LOCKE. CORRECT ALSO FOUND  
STUMP OF N.W B.T. AND WHERE STUMP OF SE B.T. HAD BEEN DUG UP.  
CALLS FOR VAR 5-35 2621.19 TO SE COR SEC 7, VAR 6-00 2644.29 TO SW  
COR SEC 7, VAR 7-14 2641.32 TO CENTER OF SEC 7, VAR 7-14 5270.1 TO  
N 1/4 COR SEC 7.
- 1934 SUNNY VOL 3 PG 254 CALLS FOR 5267.8 FROM S 1/4 COR SEC 18 TO E/W  
FENCE NEAR N 1/4 COR SEC 18.
- 196? COMBS VOL 5 PG 490 (FB #136 PG 48) DUG & FOUND HHs EVERYWHERE.  
CALLS FOR 2655 TO SW COR SEC 7, 1315 TO N/S FENCE AT S 1/16TH COR  
OF SE 1/4 OF SEC 7, & 2630 TO N/S FENCE AT SE COR OF SEC 7.

INSTALLED POLY MONUMENT WITH MAGNETS WITHIN 1' OF GRADE. RUGER VAR  
INDICATES THE CORNER IS NOT ON LINE WITH THE NW & NE CORNERS OF SEC.  
18. TO ESTABLISH THE E/W POSITION, I PRORATED THE DISTANCE FROM THE NW  
TO NE CORNERS OF SECTION 18 WITH RUGER'S DISTANCE. TO ESTABLISH THE  
N/S POSITION, I USED THE LOCATION OF THE E/W FENCE. THIS POSITION IS  
IN HARMONY WITH THE RECORD DISTANCES TO THE N/S FENCES ALONG THE NORTH  
LINE OF SECTION 18, THE DISTANCE TO THE N 1/4 COR SEC 7, THE DISTANCE  
TO THE S 1/4 COR OF SEC 18 AND THE DISTANCE TO THE INTERSECTION OF THE  
1/4 LINES IN SECTION 7, AND THE COMPUTED POSITION OF THE CENTER OF  
SECTION 18 AS DETERMINED BY TALARCZYK.

C) Was the corner restored through acceptance of (1) an obliterated  
evidence location, or, (2) a found perpetuated location?  
CORNER RESTORED THROUGH ACCEPTANCE OF OBLITERATED EVIDENCE LOCATION.

D) Describe any material discrepancy between the location of the  
corner as restored or reestablished and the location of that corner as  
previously restored or reestablished by distance and direction. Show  
the discrepancy on the plan view drawing under (a), above. Show the  
distances between the corner as previously restored or reestablished  
and (1) the corner as restored or reestablished, and (2) to at least 4  
of the witness monuments shown on the drawing in (a), above.

I, Donald Barnes, hereby certify that the corner location as identified  
by the corner code index was determined by me under My direction and  
control and that this U.S. Public Land Survey Monument Record is  
correct and complete to the best of my knowledge and belief.

seal

*Donald Barnes*  
Dec 9, 1996

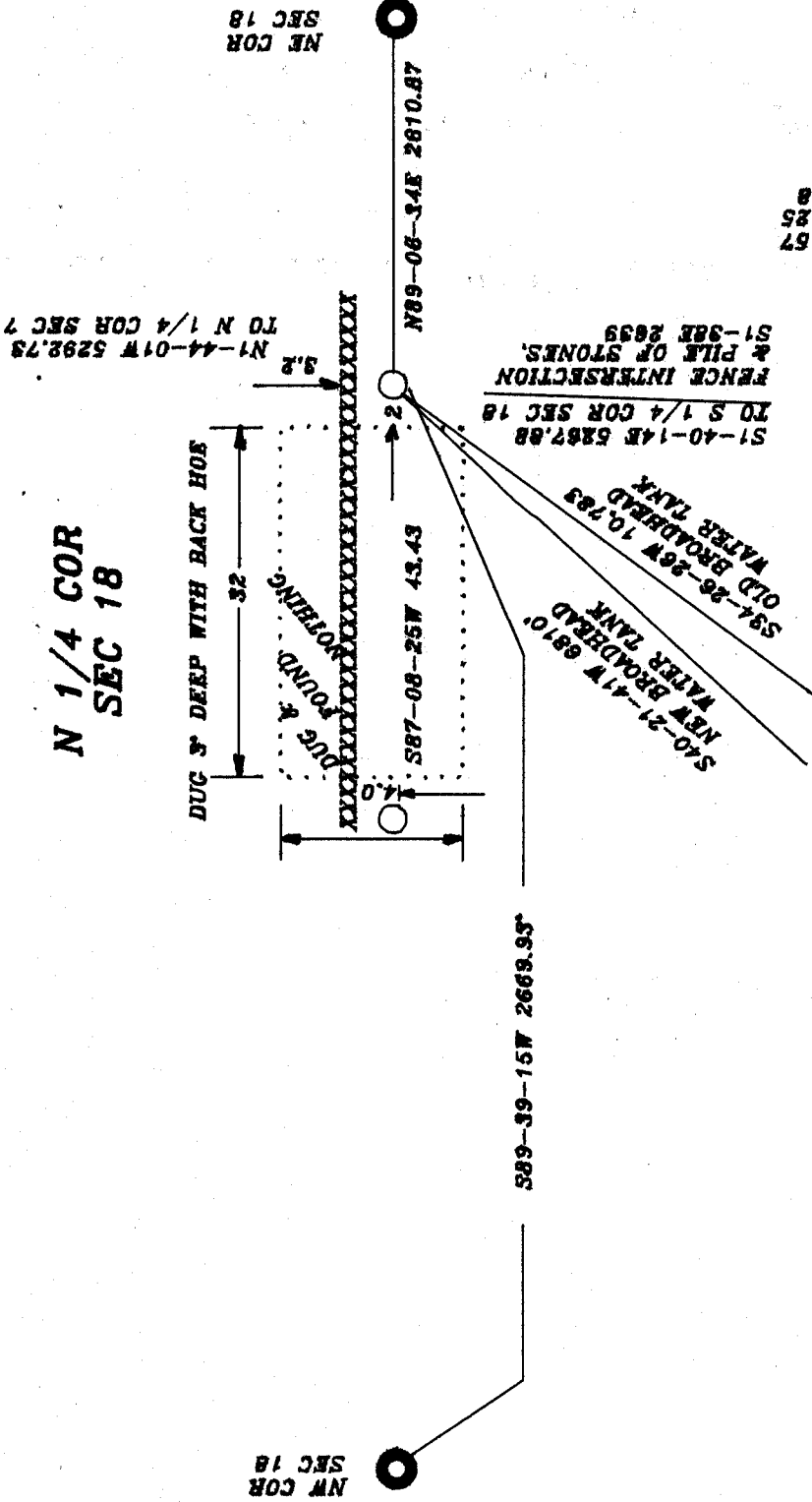
emboss

Number of included sheets \_\_\_\_\_

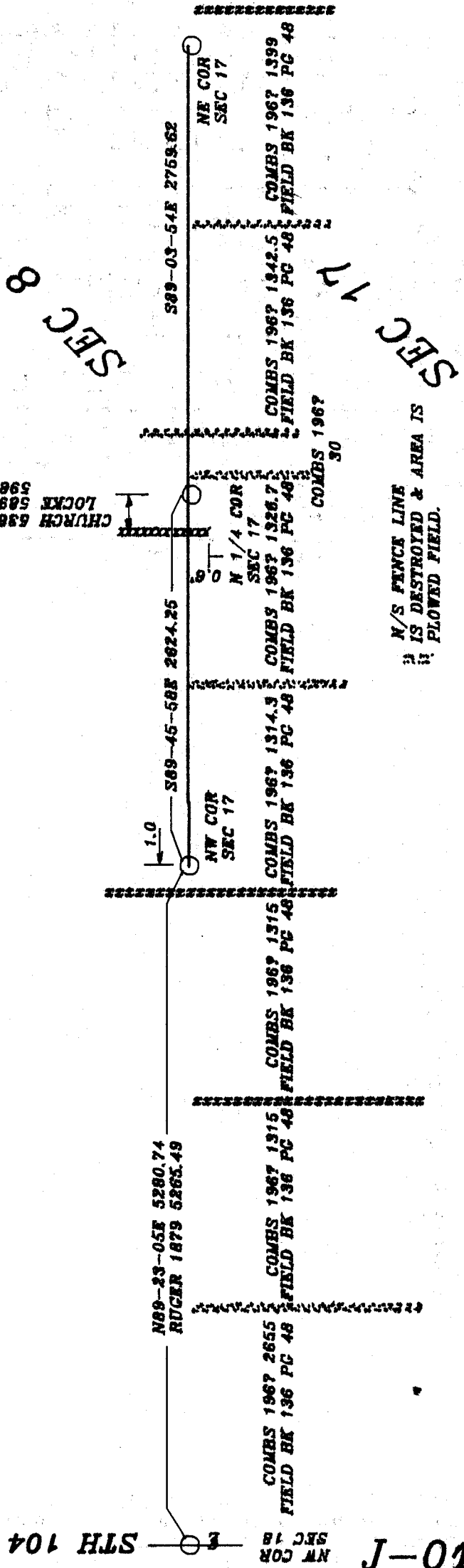
CORNER CODE

A-E 7.08 REQUIREMENT

**N 1/4 COR  
SEC 18**



*Donald Barnes  
Dec 8, 1996*



STH 104  
J-03

*Dec 9, 1996*  
*Barnes*  
*Miller*

RUGER 1879 VAR 6-44  
 RUGER 1879 2562.78  
 MILLER 3/18/1834 2706.00  
 N88-48-36E 2525.30  
 RUGER 1879 2651.22  
 RUGER 1879 VAR 6-20  
 MILLER 3/18/1834 2640.00  
 N89-16-57E 2634.84  
 RUGER 1879 5214.0

NW COR

NE COR  
 FD PIPE

FD ALUM. MON.  
 MILLER 3/18/1834 1119.36  
 ORIG 181.5 NORTH OF POST  
 NO-09-17W 1142.28

SEC 13

MILLET 9/6/1833 2640  
 NO-05-43V 2633.54  
 RUGER 1879 2621.52  
 RUGER 1879 VAR 5-35  
 RUGER 1879 5243.04  
 NO-07-05V 2627.00

FD ALUM. MON.  
 NO-11-01V 2626.74  
 MILLET 9/6/1833 2640  
 LEE 1868 2612.28  
 RUGER 1879 2621.52  
 1313.5 COMBS 1313.5  
 NO-12-04V 2627.00  
 1310.76 RUGER 1879 1310.76  
 RUGER 1879 2631.42

NW COR  
 FD C.I.  
 FD ALUM. MON.  
 ORIG 59.4 NORTH OF POST  
 MILLER 3/18/1834 1160.28  
 NO-04-22V 1148.56

TO R/R OF REC  
 NO-03-25V 2640.62  
 TO WIDOT DISK 2637.75  
 TALARCYK 1977 2640.62  
 WIDOT 232 682.61  
 2170.345.24

FD DOT DISK  
 IN BOX &  
 TIES  
 WIDOT 230 011.03  
 2170.377.47  
 WIDOT NO-41-05W  
 1109.70 (GRID)  
 BARNES 1985 1136.74

W 1/4 COR  
 FD TIES

SEC 7  
 CENTER OF SEC 7  
 COMPUTED BY INT.  
 1/4 LINES FOR  
 EVALUATION PURPOSES  
 MAY NOT BE CENTER  
 RUGER 1879 2642.64  
 N89-07-09E 5232.34  
 RUGER 1879 5221.26  
 RUGER 1879 2634.06  
 LEE 1868 2679.6  
 N89-07-05E 2642.18  
 RUGER 1879 2615.75  
 RUGER 1879 2641.32  
 RUGER 1879 2650.30  
 SI-32-17E 2650.30  
 LOCKE 1866 VAR 8  
 1311.68 LOCKE 1311.68  
 MILLER 3/18/1834 2640  
 RUGER 1879 2621.2  
 RUGER 1879 VAR 6-00 PLACE POLY.  
 RUGER 1879 VAR 5-35

SEC 18  
 TO TALARCYK PT  
 NI-54-06V 2646.84  
 LOCKE 2633.90  
 LOCKE 1866 5267.80  
 SUNNY 1934 5270.5  
 NI-52-04V 5269.77  
 LOCKE 1866 5350.68  
 N89-36-59E 5353.40  
 N89-19-26E 2612.48  
 LOCKE 1866 2613.6  
 1306.8 LOCKE 1306.8  
 N89-53-35E 2740.98  
 TALARCYK 1977 2742.40  
 LOCKE 1866 2737.02  
 TO TALARCYK  
 NI-39-46  
 TALARCYK  
 91-39-20  
 NI-39-46  
 TALARCYK  
 89-35-50  
 LOCKE 2633.90  
 TALARCYK 2628.95  
 NI-42-14V 2629.23  
 SUNNY 1934 2620.7  
 BARNES 1984 2623.53

SEC 19  
 T2N R10E  
 AT W 1/4 COR SEC 18 FD L.S. & R/R  
 THAT TALARCYK PLACED. USED R/R  
 & TALARCYK'S DISTANCES &  
 ANGLES TO COMPUTE POSITION  
 OF CENTER OF SECTION 18 FOR  
 EVALUATION PURPOSES. POSITION  
 IS NOT NECESSARILY THE CENTER.  
 (DEG) NOTES COMPUTED ANGLES USING  
 R/R & FOUND MONUMENTS.  
 SUNNY 1934 2821.4  
 TALARCYK 2818.32  
 BARNES 1984 2818.28  
 N89-41-53E 2817.99  
 WIDOT N89-24-36E 2818.38 (GRID)  
 ORIG 2795.76  
 RUGER 1325.78  
 RUGER 2622.18  
 LEE 1869 2622.18  
 WIDOT SD-44-48E 2593.50  
 BARNES 1984 2625.91  
 1985 1311.10 BARNES  
 SD-06-48E 2625.91

LOCKE 1866 2631.42  
 RUGER 1879 2628.12  
 NI-15-52W 2632.88  
 BARNES 1982 2632.88  
 MILLER 1834 2640  
 NI-15-07V 2651.37  
 LEE-1868 2654.52  
 LEE 1868 VAR 8-00  
 RUGER 1879 2644.46  
 LOCKE 2647.92  
 MILLER 1834 2640

NW COR  
 FD STONE  
 SUNNY 1934 TO FENCE 2640  
 LOCKE VAR 8-50  
 LOCKE 1866 2639.34  
 LOCKE 1866 2640.78  
 MILLER 1834 2640  
 WIDOT NI-59-07V (GRID)  
 MILLER 1834 2640

