

# U.S. PUBLIC LAND SURVEY MONUMENT RECORD

For Public Land Survey Corners in:

WI ADMINISTRATIVE CODE A-E 7.08 REQUIREMENT

T. 2N., R. 11E

### CORNER CODE INDEX

A	1	2	3	4	5	6	7	8	9	10	11	12	13	14	15	16	17	18	19	20	21	22	23	24	25
B																									
C	6																								
D																									
E																									
F	7																								
G																									
H																									
I																									
J																									
K	18																								
L																									
M																									
N																									
O																									
P	19																								
Q																									
R																									
S																									
T	30																								
U																									
V																									
W																									
X	31																								
Y																									
Z																									

PLYMOUTH TWP

ROCK COUNTY WI

IF AVAILABLE  
ROCK COUNTY COORDINATES PREFERRED

North \_\_\_\_\_ Elev. \_\_\_\_\_

East \_\_\_\_\_

Hor. Datum \_\_\_\_\_ Vert. Datum \_\_\_\_\_

LATITUDE \_\_\_\_\_ ELLIPS. HT. \_\_\_\_\_

LONGITUDE \_\_\_\_\_

GPS (X) \_\_\_\_\_ TRAVERSE (X) \_\_\_\_\_

BASED ON THE FOLLOWING CONTROL:

PLACE MONUMENT SYMBOL  AT PROPER LOCATION ON ABOVE INDEX

CORNER MONUMENT

WITNESS MONUMENT

(a)

BEARINGS ARE BASED ON:

FIELD BOOK \_\_\_\_\_ PAGE # \_\_\_\_\_

SHEET 1 OF 3

SHOW A PLAN VIEW DRAWING DEPICTING THE CORNER MONUMENT AND SURROUNDING PHYSICAL FEATURES, INCLUDING THE EXCAVATION AREA AND DEPTH.

PLANNING & ZONING COMMITTEE ADOPTED THE ABOVE FORM ON 12/2/1982

CORNER CODE X-21

PL619

(B) Describe any record evidence, monument evidence, occupational evidence, testimonial evidence or any other material evidence you considered, and whether the monument was found or placed.

1833 HARRISON NORTH BETWEEN 35 & 36 VAR B-00E DEC 20TH

462 LEFT TIMBERING ENTER MARSH  
990 LEAVE MARSH & ENTER TIMBER  
2640 QUARTER SEC COR. BURR OAK 22 N87W 73.26';  
BUR OAK B S31E 30.36'; BURR OAK 22 & BURR O  
B MARKED.  
3630 LEFT TIMBER & ENTER PRAIRIE  
4854.96 LEFT PRAIRIE & ENTER TIMBER  
4884 BLACK OAK 12  
5214 BLACK OAK 12  
5280 COR TO SECS 26,25,35,36 RED OAK 24 N69E  
25.08'; WHITE OAK 24 N 10W 38.94'; RED OAK 16  
S9W 38.28'; RED OAK 14 S46E 75.9'; LAND BDY.  
2<sup>ND</sup> RATE. TIMBER BURR RED & WHITE OAK DEC  
20<sup>TH</sup>

1849 MC VANE TOWN ROAD RECORDS BK 1 PG 26 "" THE WIDTH  
OF 49.5' AND SAID COMMISSIONERS HAVE CAUSED A  
SURVEY THERE OF TO BE MADE AS FOLLOWS; THE CENTER  
LINE OF SAID HWY IS TO COMMENCE AT THE NW COR OF SEC  
25; THENCE RUNNING SOUTH ON THE SOUTH ON THE  
SECTION (2)6 TO THE SW COR OF SAID SEC 25; THENCE  
SOUTH ON THE SEC LINE BETWEEN SEC 35 AND SEC 36  
TERMINATING ON THE SOUTH LINE OF SAID TOWN THE  
CENTER OF HWY TO BE ON THE SEC LINE.

1852 MC VEAN VOL 1 PG 14 5278.02 VAR 6-11 TO E 1/4 COR SEC  
36. SUBDIVIDED SEC 36. STATES NOTHING ABOUT COR.

1856 CHURCH VOL 1 PG 62 STATES NOTHING ABOUT COR.  
2663.1 VAR N83-55E TO CENTER OF SEC 35, VAR N83-55E  
5326.2 TO W 1/4 COR SEC 35. STATED NOTHING ABOUT COR.  
USED TO SUBDIVIDE SEC 35.

1868 LOCKE PLYMOUTH TWP REMONUMENTATION PG 9  
NORTH BETWEEN SEC 35 & 36 VAR 7-10 AUG 19<sup>TH</sup> 1868

2658.48 INTERSECTED 1/4 LINE AT COR. FOUND B.T. IN  
SEC 35 (GUT DOWN BUT NOT REMOVED) AND  
REMAINS OF STAKE. COR IN CENTER OF HIGHWAY  
AND 1.98' SOUTH OF FENCE RUNNING WEST.  
CONTINUED NORTH FROM 1/4 COR WITH VAR 7-15  
5318.28 INTERSECTED NORTH BOUNDARY 6.6' WEST OF  
COR. VAR CORRECTED 7-07

1873 RUBER VOL2 PG 116 STONE MON. VAR 5-48 2651.88 TO  
CENTER OF SEC 35 & VAR 5-48 5335.44 TO W 1/4 COR SEC  
35.

1874 RUBER VOL 2 PG 127 STONE MON. VAR 5-07 2648.58 TO  
CENTER SEC 36

1962 SHIMEALL MAP #4445 PIPE OVER STONE AT W 1/4 COR SEC  
36. ANGLE OF 88-18 AT W 1/4 COR SEC 36 FROM A PIPE 90  
DEGREES EAST OF THE W 1/4 COR SEC 36 TO THE SW COR SEC  
36.

19?? SHIMEAL MAP #4432 PIPE OVER STONE. 888-18E ALONG  
E/W 1/4 LINE SEC 36 & SOUTH TOWARDS SW COR SEC 36.

1967 BATTERMAN VOL 4 PG 308 SET MON. BOX OVER 1" PIPE &  
REFERENCED SAME.

1967 SHIMEALL MAP #04442 PIPE AT W 1/4 COR SEC 36 888-18E  
2648.14 TO CENTER OF SEC 36, SOUTH 2658.77 TO PIPE  
OVER STONE AT SW COR SEC 36, ANGLE OF 88-18 @ W 1/4  
COR SEC 36 FROM CENTER SEC 36 TO SW COR SEC 36;  
ANGLE OF 91-42 AT CENTER OF SEC 36 FROM S 1/4 COR SEC  
36 TO W 1/4 COR SEC 36, & ANGLE OF 91-49 AT SW COR SEC  
36 FROM W 1/4 COR SEC 36 TO S 1/4 COR SEC 36.

196? SHIMEALL MAP #04432 PIPE OVER STONE AT W 1/4 COR SEC  
36, 3 LOTS ALONG THE NORTH LINE OF THE SW 1/4 OF SEC  
36. THE FIRST BEING 275.00 AND THE NEXT TWO EACH  
SHEET 1 OF 3 CORNER CODE X-21

Donald Barnes

1/14/03

PL619

200.00. SOUTHERLY 375.00 TO THE NORTH R/W LINE OF HICKORY LANE. AN ANGLE OF 88-18 AT THE W 1/4 COR SEC 36 FROM THE E/W 1/4 LINE OF SEC 36 TO THE SW COR SEC 36. THE NW COR OF THE FIRST LOT IS 24.75 EAST OF THE W 1/4 COR SEC 36

1969 SHIMEALL OSM VOL 1 PG 211 NW COR LOT 1 TO W 1/4 COR SEC 36 IS N88-18W 1075.00

1973 BATTERMAN VOL 4 PG 308 REFERENCED CORNER WITH NOTE: MON BOX TAKEN OUT BY COUNTY HWY DEPT.

1975 LEE OSM VOL 5 PG 100 SET NAIL AT W 1/4 COR SEC 36. 440.6 (SOUTHERLY) TO POINT 33.02 WEST OF PIPE ON SOUTH LINE OF HICKORY LANE. LINE BETWEEN THE W 1/4 COR SEC 36 AND A PIPE IN A MON. BOX AT THE SW COR SEC 36.

1996 COMBS OSM VOL 19 PG 206 MON. BOX. LINE BETWEEN THE W 1/4 COR SEC 36 AND AN IP OVER A STONE AT THE SW COR SEC 36. 922.22 SOUTH OF THE W 1/4 COR SEC 36 TO NORTH LINE OF 3 LOTS, WHICH ARE EACH 300.00' AND EACH WITH 35.02' R/W DEDICATION.

THE POSITION WAS COMPUTED FROM FOUND TIES.

*C) Was the corner restored through acceptance of (1) an obliterated evidence location, or, (2) a found perpetuated location?*

THE MONUMENT APPEARS TO HAVE BEEN DESTROYED BY ROAD CONSTRUCTION. I TIED INTO FOUND REFERENCE PIPES. IF ONE ESTABLISHES A POINT BY USING THE RECORD DISTANCES FROM THE MOST NORTHWESTERLY (80.41) AND SOUTHWESTERLY (81.70') DISTANCES, THEN THE DISTANCE TO THE COMPUTED W 1/4 COR SEC 36 FROM THAT POINT IS 33.05 (REC 33.00). THE FOUND EASTERN REFERENCE PIPE MAY NOT BE THE ORIGINAL REFERENCE PIPE. THE REFERENCE PIPE IS 0.20 SOUTH OF THE E/W 1/4 LINE. THE COMPUTED POSITION IS IN HARMONY WITH SHIMEALL'S ANGLES. ACCEPTED COMPUTED POSITION AS LOCATION PERPETUATING THE FOUND OUT L.S.

*D) Describe any material discrepancy between the location of the corner as restored or reestablished and the location of that corner as previously restored or reestablished by distance and direction. Show the discrepancy on the plan view drawing under (a), above. Show the distances between the corner as previously restored or reestablished and (1) the corner as restored or reestablished, and (2) to at least 4 of the witness monuments shown on the drawing in (a), above.*

*(E) Was the corner reestablished through lost corner proportionate methods? If so, show the method, including the directions and distances to other public land survey corners used as evidence or used for proportioning the corner location.*

I, Donald Barnes, hereby certify that the corner location as identified by the corner code index was determined by me under my direction and control and that this U.S. Public Land Survey Monument Record is correct and complete to the best of my knowledge and belief.

Seal

Donald Barnes

Emboss

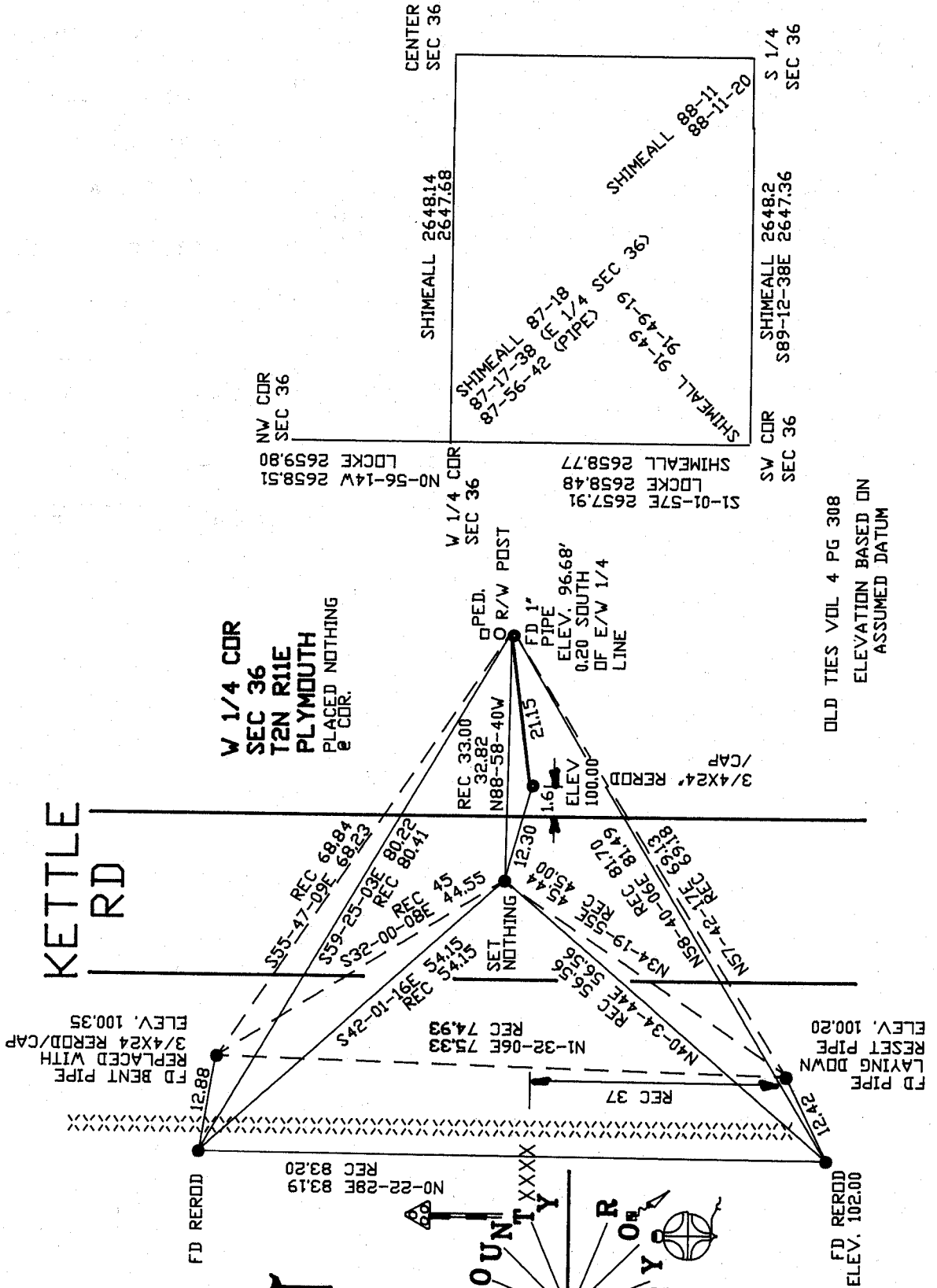
1/14/03

SHEET 2 OF 3

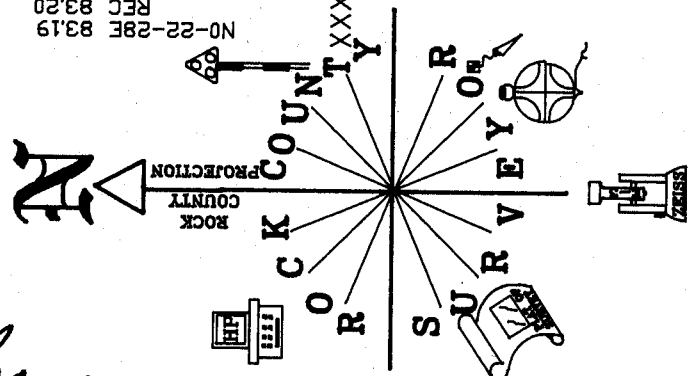
CORNER CODE **X-21**

A-E 7.08 REQUIREMENT

KETTLE RD



OLD TIES VOL 4 PG 308  
ELEVATION BASED ON  
ASSUMED DATUM



Ronald Baines  
EMBOSSED SEAL  
1/14/03

30F3

X-21