

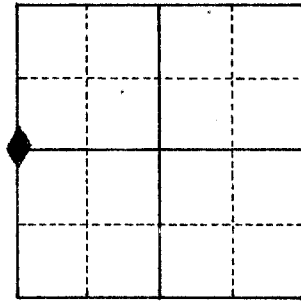
# U.S. PUBLIC LAND SURVEY MONUMENT RECORD

For Public Land Survey Corners in the  
T. 2 N., R. 11 E. PLYMOUTH

For Miscellaneous Corners within Sec.  
13 \_\_\_\_\_, T. 2 N., R. 11 E.

## CORNER CODE INDEX

	1	2	3	4	5	6	7	8	9	10	11	12	13	14	15	16	17	18	19	20	21	22	23	24	25
A																									
B																									
C	6																								
D		5																							
E			4																						
F				3																					
G					2																				
H																									
I																									
J	7																								
K		8																							
L			9																						
M				10																					
N					11																				
O						12																			
P							13																		
Q	18																								
R		17																							
S			16																						
T				15																					
U					14																				
V						13																			
W							16																		
X								15																	
Y									14																
Z										13															



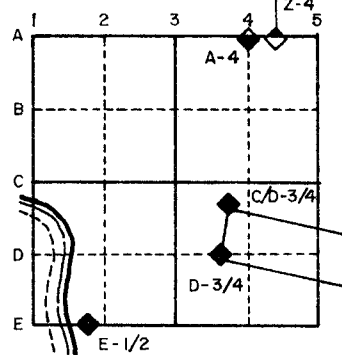
1. Above code numbers are positioned Meander, Claim, or Fractional corners of the section.
2. Township corner code numbers shall be applied to the corners of above typical section.

PLACE MONUMENT SYMBOL (◆) AT PROPER LOCATION ON ABOVE INDEX

IF AVAILABLE  
STATE PLANE COORDINATES

North (Y) \_\_\_\_\_ Eleve. (Z) \_\_\_\_\_  
 East (X) \_\_\_\_\_ Zone \_\_\_\_\_  
 Hor. Datum \_\_\_\_\_ Vert. Datum \_\_\_\_\_

### EXAMPLE

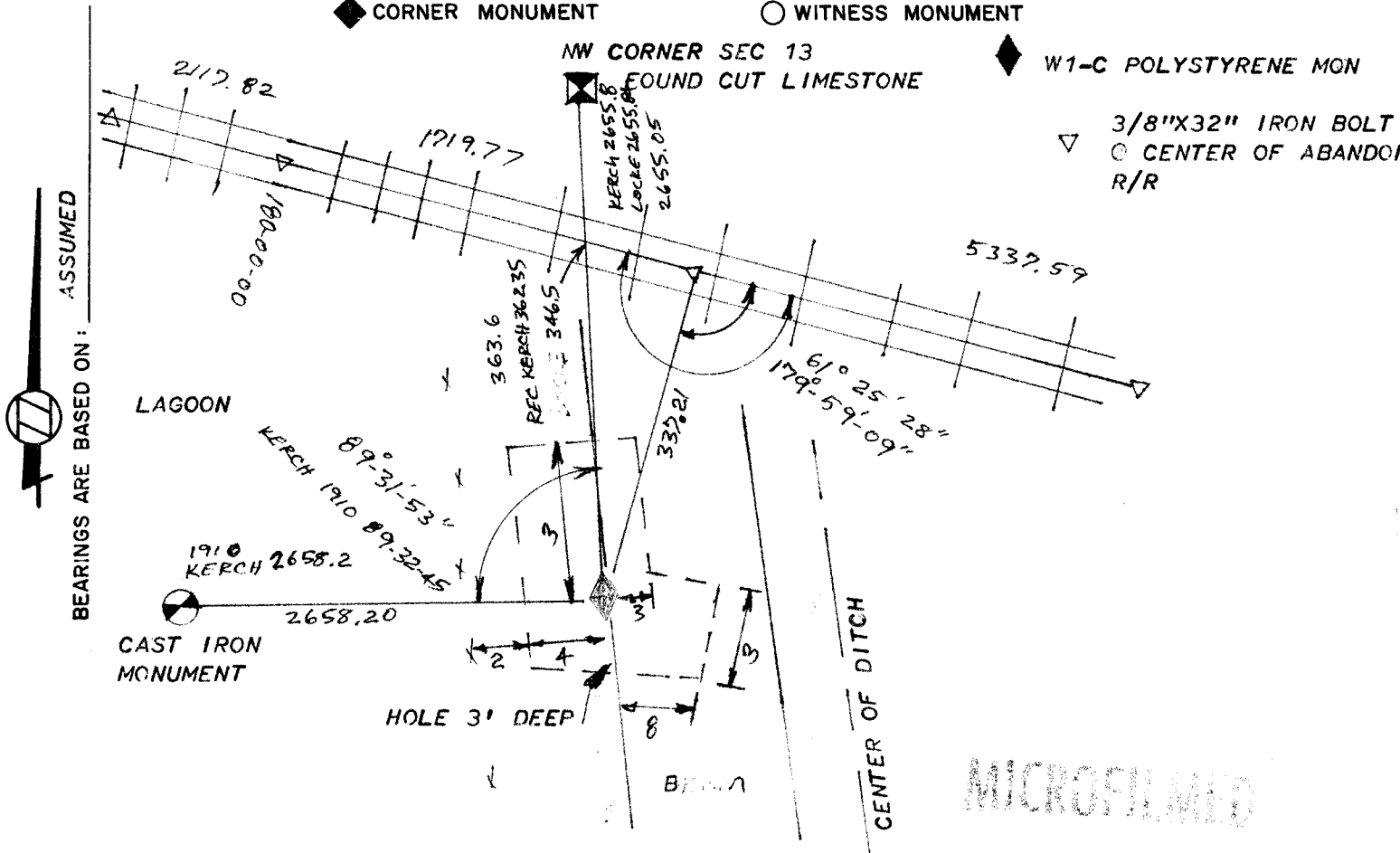


◆ CORNER MONUMENT

○ WITNESS MONUMENT

◆ W1-C POLYSTYRENE MON

▽ 3/8"X32" IRON BOLT  
 ○ CENTER OF ABANDONED R/R



MICROFILMED

SHOW A PLAN VIEW DRAWING DEPICTING THE CORNER MONUMENT AND SURROUNDING PHYSICAL FEATURES, INCLUDING THE EXCAVATION AREA AND DEPTH. THE CORNER MONUMENT SHALL HAVE THE FOLLOWING CHARACTERISTICS: 1) HAVE AT LEAST TWO PREDETERMINED BREAK-OFF POINTS. 2) IF BROKEN, LEAVE A PERMANENTLY MAGNETIZED REMNANT AT THE ORIGINAL POINT. 3) MUST BE EXTENDABLE. 4) THE CAP IS INSCRIBED: ROCK COUNTY SURVEY MONUMENT - PENALTY FOR DISTURBING MARKER. 5) OR AN EXISTING CUT LIMESTONE. AN IRON PIPE 1 1/2" x 4'0" (MINIMUM) WITH AT LEAST 4 DURABLE WITNESS MONUMENTS MAY BE USED IN AREAS WHERE GROUND WATER IS WITHIN 1.0' OF THE SURFACE. IF THE CORNER IS OCCUPIED BY AN IMPROVEMENT (MANHOLE, BURIED CABLE, ETC.), ANY DURABLE, DISTINCT MONUMENT MAY BE USED AND REFERENCED WITH AT LEAST 4 DURABLE WITNESS MONUMENTS.

CORNER CODE: L-21

1. Describe any record evidence, monument evidence, occupational evidence, testimonial evidence or any other material evidence you considered and whether the monument was found or set.

DUG AND FOUND A FEW 3/8"X4X6" PIECES OF CUT LIMESTONE SCATTERED  
 AROUND THE RE-ESTABLISHED CORNER. KERCH'S RECORD DISTANCE TO THE CENTER OF  
 OF SECTION 14 AND THE RECORD DISTANCE TO THE R/R TRACKS WAS USED TO SET THE  
 CORNER. THIS WAS IN HARMONY WITH KERCH'S ANGLE AND RECORD DISTANCE TO THE  
 N1/4 CORNER OF SEC 14. ALSO IT IS ON LINE WITH THE E1/4 CORNER & CENTER OF  
 SECTION 14. LOCKE SET THE CORNER ON LINE WITH THE NW & SW CORNERS OF SEC 13.  
 THE RE-ESTABLISHED CORNER IS ALSO ON LINE WITH THE NW & SW CORNERS.

2. Describe any material discrepancy between the location of the corner as restored or re-established and the location of that corner as previously restored or re-established.

NONE

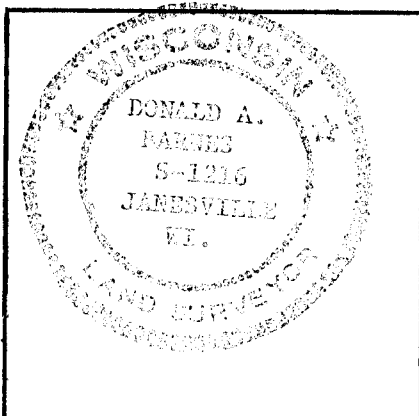
3. Was the corner restored through acceptance of an obliterated evidence location or a found perpetuated location.

THE CORNER WAS RESTORED THROUGH ACCEPTANCE OF OBLITERATED EVIDENCE LOCATION.

4. Was the corner re-established through lost corner proportionate methods? If so, show the method, including directions and distances to other public land survey corners used as evidence or used for proportioning in determination of the corner location.

NO

I, DONALD A BARNES, hereby certify that the corner points as identified by the corner code index were, in a field survey on JUNE 11 1982, established, re-established, monumented, re-monumented, recovered or restored as expressed below and in conformance with the regulations and rules as required in the current manual of survey instructions of the United States Department of Interior, Bureau of Land Management.



COUNTY SURVEYOR FILING DATA  
 Date of Computer Entry \_\_\_\_\_  
 Date Received \_\_\_\_\_  
 Date Microfilmed \_\_\_\_\_  
 Treasurer's Receipt No. \_\_\_\_\_  
 Number of Included Sheets 0

L21

AFFIX YOUR LAND SURVEYOR SEAL.