

# U.S. PUBLIC LAND SURVEY MONUMENT RECORD

For Public Land Survey Corners in:

WI ADMINISTRATIVE CODE A-E 7.08 REQUIREMENT

T. 2 N., R. 11 E

### CORNER CODE INDEX

A	1	2	3	4	5	6	7	8	9	10	11	12	13	14	15	16	17	18	19	20	21	22	23	24	25
B																									
C	6						5								4										1
D																									
E																									
F																									
G	7						8								10										12
H																									
J																									
K																									
L	18						17								15										13
M																									
N																									
O																									
P	19						20								22										24
Q																									
R																									
S	30						29								27										25
T																									
U																									
V																									
W																									
X	31						32								34										36
Y																									
Z																									

PLYMOUTH TWP

ROCK COUNTY WI

IF AVAILABLE  
ROCK COUNTY COORDINATES PREFERRED

North \_\_\_\_\_ Elev. \_\_\_\_\_

East \_\_\_\_\_

Hor. Datum \_\_\_\_\_ Vert. Datum \_\_\_\_\_

LATITUDE \_\_\_\_\_ ELLIPS. HT. \_\_\_\_\_

LONGITUDE \_\_\_\_\_

GPS (X) \_\_\_\_\_ TRAVERSE (X) \_\_\_\_\_

BASED ON THE FOLLOWING CONTROL:

PLACE MONUMENT SYMBOL  AT PROPER LOCATION ON ABOVE INDEX

CORNER MONUMENT

WITNESS MONUMENT

(a)

BEARINGS ARE BASED ON:

OBSERVATION SHEETS 366, 371, 551

FIELD BOOK \_\_\_\_\_ PAGE # \_\_\_\_\_

SHEET 1 OF 4

SHOW A PLAN VIEW DRAWING DEPICTING THE CORNER MONUMENT AND SURROUNDING PHYSICAL FEATURES, INCLUDING THE EXCAVATION AREA AND DEPTH.

PLANNING & ZONING COMMITTEE ADOPTED THE ABOVE FORM ON 12/2/1982

CORNER CODE J-21

PL551

(B) Describe any record evidence, monument evidence, occupational evidence, testimonial evidence or any other material evidence you considered, and whether the monument was found or placed.

1833 HARRISON NORTH BETWEEN SECS 13 & 14

1056 LEFT MARSH & ENTER TIMBER  
1914 LEFT TIMBER & ENTER MARSH  
2095.5 BROOK 49.5' CRS SE  
2640 QUARTER SEC COR. IN MARSH SET POST  
4488 LEFT MARSH & ENTER TIMBER  
4625.94 BLACK O 36  
4722.96 BURR O 34  
5280 COR TO SEC 11, 12, 13, 14 {BURR O 16 N32W 49.5'  
BUR O 14 N71E 34.98', BURR O 13 S69E 39.6',  
WH O 11 S19W 40.26'} LAND MOSTLY LEVEL WITH  
3<sup>RD</sup> MARSH WITH GRASS & WEEDS

EAST ON RANDOM BET SECS 12 & 13

1716 LEFT TIMBER & ENTER MARSH  
2640 TEMPY QR P  
5307.72 INT. E. BDY 22.44' N OF P LAND LEVEL 2<sup>ND</sup> RATE  
FOR WEST 1/2 MILE WITH RED & BURR & BLK O LAST  
1/2 LEVEL & WET 3<sup>RD</sup> RATE MARSH DEC 20<sup>TH</sup>

WEST COR. WEST

2653.86 QUARTER SEC COR. {BURR O 14 NB6W 891'  
BURR O 14} MARKED  
5307.72 SEC COR.

NORTH BETWEEN SECS 11 & 12

546.48 BLACK O. 18  
762.96 BURR O. 14  
2640 QUARTER SEC COR. {BURR O 24 N39W 17.16'  
BURR O 6 S44E 22.44' BURR O 24 BURR O 6}  
MARKED  
4686 LEFT TIMBER & ENTER MARSH  
5148 LEFT MARSH  
5280 COR TO SECS 1, 2, 11, 12 {BURR O 6 N7E 61.38',  
BURR O 10 N26W 79.86', BURR O 24 S87W  
139.92'  
LAND LEVEL 2<sup>ND</sup> RATE WITH BURR O TIMBER ??

EAST ON RAND BET 11 & 14

693 BROOK 13.2' S.E.  
1650 LEFT MARSH & ENTER TIMBER  
2178 LEFT TIMBER & ENTER MARSH  
2640 TEMPY 1/4 P  
3168 LEFT MARSH & ENTER TIMBER  
5302.44 INT. E BDY 36.96' N OF P LAND LEVEL & WET 2<sup>ND</sup>  
RATE TIMBER BURR & RED O  
COR. WEST

2651.22 QUARTER SEC COR. {BURR O 26 S83E 610.5'  
BURR O 26 BURR O 26} MARKED

5302.44 SEC COR

1855 CHURCH VOL 1 PG 34 STATES NOTHING ABOUT MON.  
VARIATION S88-20W 5302.44 TO SW COR SEC 11.

1864 LOCKE VOL 1 PG 218 & MAP #4342 FD STUMPS OF BTS &  
OLD STAKE - SURROUNDED STAKE BY HARD GRAY  
SANDSTONE, SMALL LIME & SMALL RED HARD HEADS.  
2709.96 TO S 1/4 COR SEC 12.

1865 LOCKE VOL 1 PG 240 SEE SEC 12 2636.30 TO E 1/4 COR  
SEC 11 & 2641.32 TO S 1/4 COR SEC 11 (S 1/4 COR LOST &  
SET MIDWAY BETWEEN SE & SW CORNERS SEC 11).

1868 LOCKE PG 29 NORTH BETWEEN SECS 13 & 14 VAR 7-05

1056 BR O 8 1.98' EAST OF LINE  
2112 BASS CREEK SOUTH BANK  
2138.4 BASS CREEK NORTH BANK  
2640 SET TEMPORARY 1/4 COR COR LOST.  
3002.34 CENTER B&M RR  
4579.08 CENTER M&M R.R

David Barnes

02/05/03

- PL551
- 5311.68 INTERSECTED NORTH BOUNDARY 1.32' WEST OF COR. FOUND BT IN SEC 13 STUMPS OF BT IN SECS 11 AND 12 AND COR AS SET BY SELF (SEE CO. SURVEYORS RECORD SEC 12) COR AT INTERSECTION OF FENCES.
- 2655.84 SET PERMANENT ¼ COR 15.84' NORTH AND .66' E OF TEMPORARY ¼ COR. VAR CORRECTED 7-04 AUG 26 1868  
*PG 30 EAST BETWEEN SECS 12 & 13 VAR 5-12*
- 2716.56 INTERSECTED ¼ LINE AT COR. FOUND BT & COR AS SET BY SELF. (SEE CO. SURVEYORS RECORD SEC 12) COR IN LINE OF FENCE RUNNING E & A LITTLE WEST OF FENCE RUNNING N  
*CONTINUED EAST FROM ¼ COR WITH VAR 5-35*
- 5328.84 INTERSECTED EAST BOUNDARY AT COR.  
*PG 39 SOUTH BETWEEN SECS 11 & 12 VAR 5-25*
- 380.82 CENTER OF SLUIDE BRIDGE
- 2650.56 INTERSECTED ¼ LINE AT COR. FOUND B.T.S AND STONE ON COR. SET BY SELF.  
*CONTINUED SOUTH WITH VAR 8-15*
- 5301.78 INTERSECTED SOUTH BOUNDARY 16.5' EAST OF COR. VAR CORRECTED 7-54 AUG 28, 1868  
*PG 40 WEST BETWEEN SECS 11 & 14 VAR 6-15*
- 2640 SET TEMPORARY ¼ COR. COR. LOST
- 5307.39 INTERSECTED WEST BOUNDARY 40.26' NORTH OF COR. COR. LOST. SET IT IN BY "PROPORTIONAL DISTANCE" FROM CORS ONE MILE NORTH, EAST AND WEST AND ONE HALF MILE SOUTH. DROVE STAKES AT THE FACE OF THE MONUMENT AND SURROUND IT BY MOUND OF TUSSECKS.
- 2653.70 SET ¼ COR 13.70' AND 20.13' SOUTH OF TEMPORARY COR. COR. IN SOD FENCE RUNNING N & S VAR CORRECTED 6-41 AUG 28 1868
- 1869 LEE VOL 2 PG 1 FD MON VAR 7-30 2662.44 TO S ¼ COR SEC 11 VAR 8-00 2652.87 TO E ¼ COR SEC 11
- 1869 LEE VOL 2 PG 2 2662.44 TO S ¼ COR SEC 11 & VAR 7-15 2658.48 TO E ¼ COR SEC 14
- 1870 RUGER VOL 2 PG 33 STONE MON. SET BY LOCKE
- 1876 RUGER VOL 2 PG 205 STONE MON VAR 3-55 2720.52 TO S ¼ COR SEC 12 & VAR 6-14 2646.76 TO W ¼ COR SEC 12
- 1910 KERCH VOL 3 PG 61 2655.8 TO E ¼ COR SEC 14, 2660.4 TO N ¼ COR SEC 14, ANGLE @ E ¼ COR SEC 14 FROM CENTER SEC 14 TO NE COR SEC 14 = 89-32-45, & ANGLE @ S ¼ COR SEC 11 FROM CENTER SEC 11 TO SE COR SEC 11 = 89-25.
- 1972 LEE VOL 4 PG 587 FD CUT STONE S89-35-31E 2715.85 TO S ¼ COR SEC 12, ANGLE @ S ¼ COR FROM SW COR TO CENTER SEC 12 IS 88-34-44 & ANGLE @ S ¼ COR SEC 12 FROM SE TO SW CORNERS IS 180-00-00
- 1982 BARNES R-21 SO-32-20E 2655.05 TO E ¼ COR SEC 14
- 1982 BARNES L-21 ANGLE @ E ¼ COR SEC 14 FROM CENTER SEC 14 TO NE COR SEC 14 = 89-31-53
- 1982 BARNES VOL 6 PG 282 FD CUT STONE. SET CARSONITE. SO-38-20E 2655.05 TO W ¼ COR SEC 13, S89-46-13W 1329.76 TO 1/16<sup>TH</sup> COR.
- 1982 LEUENBERG MAP #4308 FD CONG.
- 1996 COMBS GSM VOL 19 PG 367 FD STONE. 2649.89 TO E ¼ COR SEC 11.
- 1997 COMBS GSM 20-335 L.S. 2649.89 TO W ¼ COR SEC 12 AN ALUM
- 2001 COMBS GSM VOL 25 PG 7 FD STONE. 2649.89 TO E ¼ COR SEC 11.
- 2002 ERICKSON FED PRELIM. S89-09-30W 2659.52 NAD83 TO N ¼ COR SEC 14 & S01-12-35E 2655.04 NAD83 TO E ¼ COR SEC 14.

*Dwight Barnes*  
 02/05/03

PL551

FD CUT L.S. 0.5' ABOVE GROUND. PLACED CARBONITE POST ON WEST SIDE OF L.S. 12" DIA 4' TALL WOOD POST ON EAST SIDE

*C) Was the corner restored through acceptance of (1) an obliterated evidence location, or, (2) a found perpetuated location?*

ACCEPTED FD CUT L.S.

*D) Describe any material discrepancy between the location of the corner as restored or reestablished and the location of that corner as previously restored or reestablished by distance and direction. Show the discrepancy on the plan view drawing under (a), above. Show the distances between the corner as previously restored or reestablished and (1) the corner as restored or reestablished, and (2) to at least 4 of the witness monuments shown on the drawing in (a), above.*

NONE

*(E) Was the corner reestablished through lost corner proportionate methods? If so, show the method, including the directions and distances to other public land survey corners used as evidence or used for proportioning the corner location.*

1865 LOCKE DECLARED CORNER.

I, Donald Barnes, hereby certify that the corner location as identified by the corner code index was determined by me under my direction and control and that this U.S. Public Land Survey Monument Record is correct and complete to the best of my knowledge and belief.

Seal

*Donald Barnes*

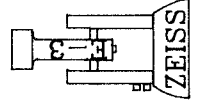
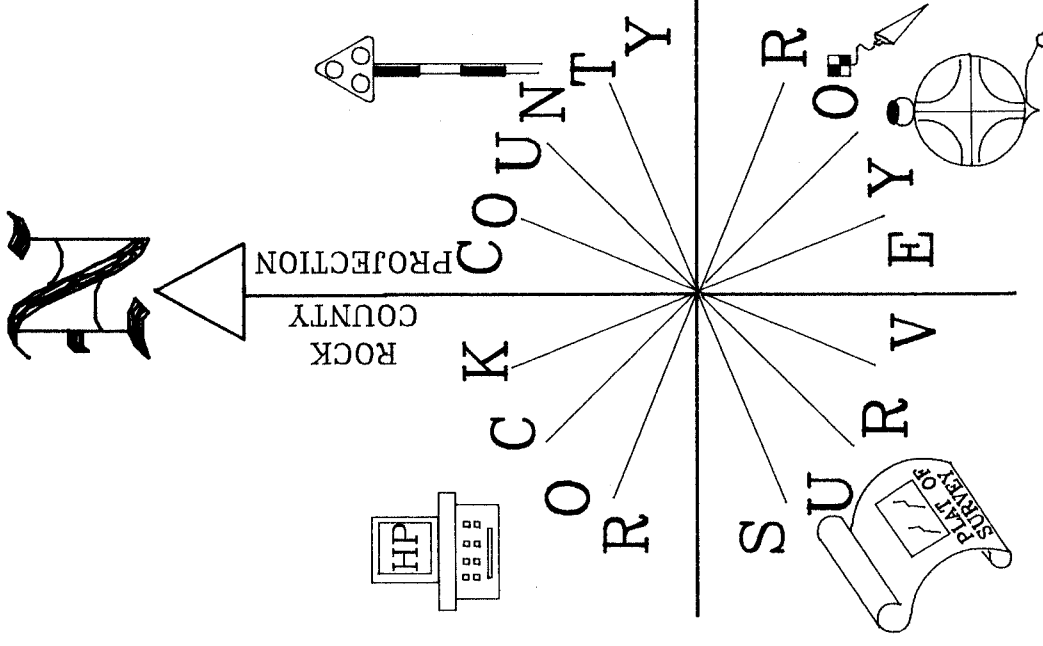
*2-05-03*

Emboss

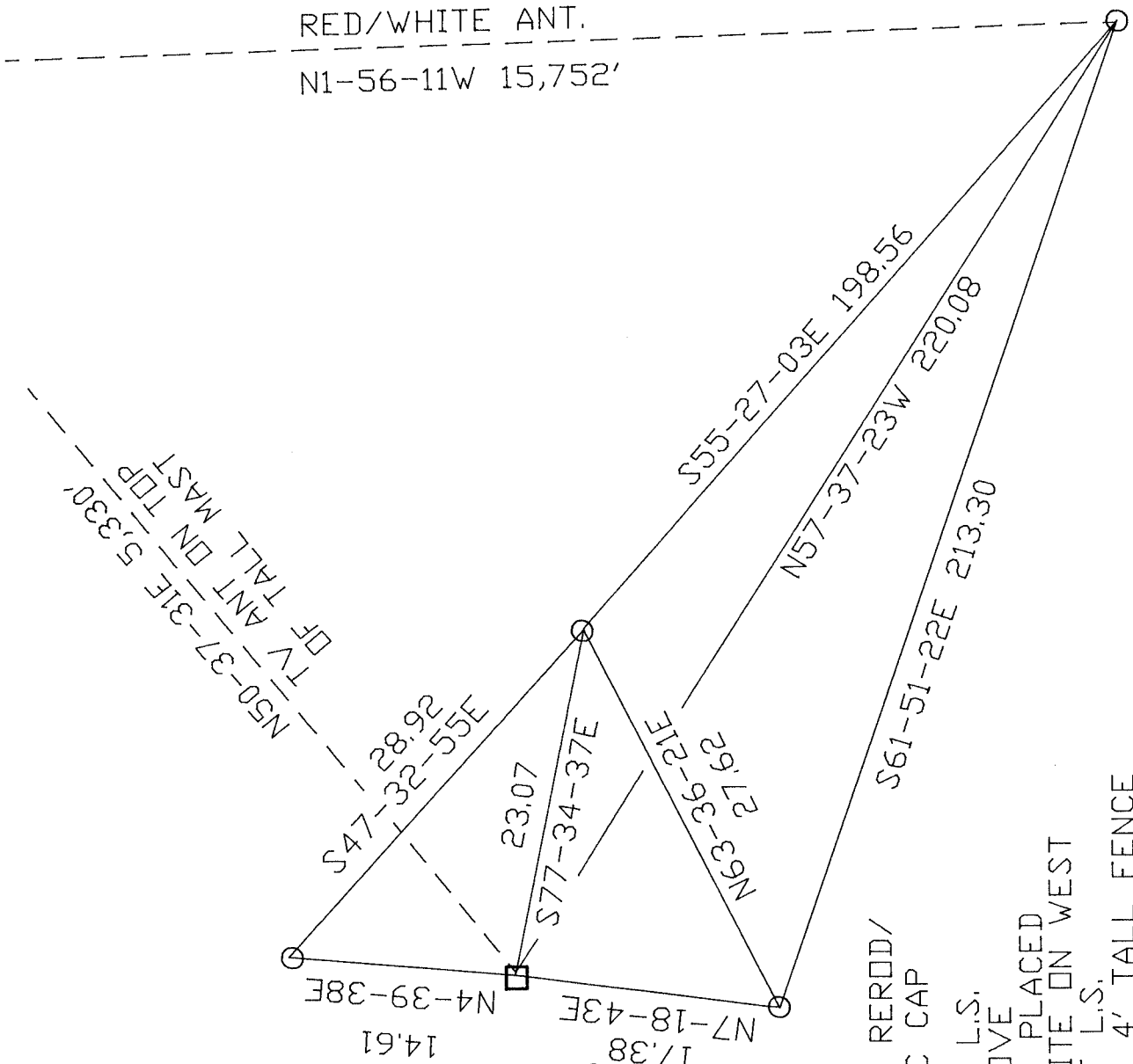
SHEET 3 OF 4

CORNER CODE **J-21**

A-E 7.08 REQUIREMENT



OBSERVATION SHEETS  
#366, 371, & 551  
NOT TO SCALE



*Donald Barnes*

EMBOSSSED  
SEAL  
2-05-03

SW COR  
SEC 12  
PLYMOUTH TWP  
T2N R11E

○ 3/4X24 REROD/  
PLASTIC CAP  
FD CUT L.S.  
0.5' ABOVE  
GROUND, PLACED  
CARSONITE ON WEST  
SIDE OF L.S.  
12" DIA. 4' TALL FENCE  
POST ON EAST  
SIDE OF STONE

□  
SHEET 4 OF 4

21